



Rockwall County Planning Consortium Report

April 2016

PROJECT STATUS UPDATES

- Erby Campbell/IH 30 Interchange
- FM 551/IH 30 Interchange
- FM 3549/IH 30 Interchange
- FM 3549
- FM 740 South
- FM 552
- SH 276
- IH 30 Ramp Reversal
- Recent RTC Actions
- SH 66 Interim
- SH 66 Ultimate
- FM 549
- SH 66/Dalrock, Rowlett
- SH 205
- IH 30 Corridor Study

Erby Campbell Interchange

CSJ:	0009-12-074 (design & construction); 0009-12-077 (ROW)	Schematic Approval:	September 12, 2011
Limits:	Erby Campbell at IH 30	IAJ Approval:	September 6, 2011
Estimated construction cost:	\$19,988,909	FHWA-CE Approval	October 4, 2011
Project Description:	The development and construction of an interchange at IH 30 and Erby Campbell Road	100% Plans to Austin:	September 2011
		ROW Acquisition Complete:	March 2013
Commissioner:	David Magness, Precinct 4	Utility Relocations Complete:	October 2013
Consultant:	Atkins	Project Let Date:	January 2012
Contractor:	Webber, LLC	Construction Began:	May 2013
TxDOT Contact:	Brenda Callaway, Juan Paredes	Construction Completion:	July 2016

Current Activity:

- **Construction:** The contract was awarded to Webber, LLC at \$19,988,909. There are approximately 503 working days and 24 months of barricades. A 6-month time delay was included in the construction documents for acquisition of ROW and utility adjustments.
- See attached construction report.
- Erby Campbell is open to traffic under IH 30. Cracks and settling were noticed in the embankment behind the northeast retaining wall of IH 30. This retaining wall will be rebuilt.

TxDOT Monthly Project Report for the Rockwall Consortium

Date of report: April 26, 2016

Report prepared by: Juan A. Paredes, P.E.

Project: **IM 0301 (058)**

CSJ: **0009-12-074**

Highway: **IH 30**

Limits: **At Erby Campbell Blvd.**

Contractor: **Webber, LLC**

TxDOT Project Engineer: Juan A. Paredes, P.E.

TxDOT Project Manager: Kerry Lively

Phone: (972) 962-3617

Contractor's Superintendent: Jason Eiland

Date Work Began: May 20, 2013

Anticipated Completion Date: July 2016

Current (April) activities: Completed construction of aggregate piers for MSE wall 3 (northeast corner). Began construction of MSE wall 3, which included fine grading, underdrain, drainable layer, and leveling pad. Continue grading slopes for top soil. Continue placing sod various locations throughout project. Continue installing small signs and large signs on the project. Continue installing illumination throughout the project. Continue working on preliminary punch list items.

Narrative description of last month's (March) activities: Completed aggregate piers design for MSE wall 3. Started construction of aggregate piers for MSE wall 3. Continue grading slopes for top soil. Placed sod various locations throughout project. Continue installing small signs and large signs on the project. Continue working on preliminary punch list items. Finish placing metal beam guard fence on the project. Placed hotmix for the westbound frontage road east of Erby Campbell.

Narrative description of activities planned for next month (May): Continue construction of MSE wall 3. Placing embankment westbound main lane east of Erby Campbell. Lime treat subgrade and place hotmix for the future westbound main lane east of Erby Campbell. Concrete paving of the westbound main lane east of Erby Campbell. Complete construction of sound wall on the eastbound main lane ramp. Continue grading slopes for top soil, placing sod, and seeding. Complete installing small signs and large signs on the project. Complete installing illumination throughout the project. Continue working on preliminary punch list items.

Traffic issues: N/A

Plans for changes in traffic patterns: None

Item(s) of work currently controlling project completion: The critical path work activities include completing construction of MSE wall 3 and placing embankment on future westbound main lane.

Other items of significance: None

FM 551 Interchange

CSJ:	0009-12-078	Schematic Approval:	August 22, 2012
Limits (From):	FM 551 at IH 30	IAJ Approval:	August 22, 2012
Estimated construction cost:	\$30,862,690	FHWA-CE Approval:	April 15, 2013
Project Description:	Development and construction of the interchange at IH 30 and FM 551	100% Plans:	April 2013
		ROW Acquisition Began:	August 2013
Commissioner:	David Magness, Precinct 4	ROW Acquisition Complete:	January 2014
		Utility Relocations Began:	December 2013
Firm:	Parsons	Utility Relocations Complete:	July 2015
Key Firm Contact:	Kara Huffman, Ryan Lagsding	Let Date:	July 10, 2013
TxDOT Contact:	Brenda Callaway, Juan Paredes	Construction Start:	June 10, 2014
Funding:	Proposition 12	Construction Completion:	July 2016

Current Status:

- **PS&E:** A final mylar submittal was made to TxDOT on April 9, 2013.
- **Funding:** An AFA with TxDOT for \$5 million for Rockwall County's participation in the project was executed by Rockwall County Commissioners Court on July 12, 2013.
- **Other:** During the week of July 13, 2015, the City of Fate submitted for TxDOT review traffic signal requests for the frontage roads of FM 551. TxDOT will perform a signal study once the FM 551 connection under IH 30 is completed.
- **Construction:** The project was bid on July 10, 2013, with a 180-day delayed start for right-of-way acquisition and utility relocation. The project was awarded to Webber, LLC at a cost of \$30,862,690. Construction began on June 10, 2014. **See attached construction report.** Demolition of FM 551 bridge occurred on September 11, 2015. Access under IH 30 on FM 551 was reestablished on partial temporary and permanent paving on November 25, 2015.

TxDOT Monthly Project Report for the Rockwall Consortium

Date of report: April 26, 2016

Report prepared by: Juan A. Paredes, P.E.

Project: **C 9-12-78**

CSJ: **0009-12-078**

Highway: **IH 30**

Limits: **At FM 551**

Contractor: **Webber, LLC**

TxDOT Project Engineer: Juan A. Paredes, P.E.

TxDOT Project Manager: Porfirio Lopez Jr.

Phone: (972) 962-3617

Contractor's Superintendent: Jason Eiland

Date Work Began: June 10, 2014

Anticipated Completion Date: July 2016

Current (April) activities: Completed concrete pavement for the new westbound main lane. Striped the new westbound main lane. Continue placing sidewalk and pedestrian ramps throughout project. Switched traffic to final configuration on the westbound main lane on April 14, 2016. Placed rail on the IH 30 overpass bridge. Placed barrier for final configuration of the westbound main lane. Place barrier for final configuration of the eastbound main lane. Continue installing small signs and large signs on the project. Grade slope for top soil, seeding, and sod.

Narrative description of last month's (March) activities: Finish constructing leveling pad and coping for MSE walls 2 (northwest corner) and 4 (northeast corner). Placed concrete for the new westbound main lane bridge. Finished lime treatment embankment for the proposed westbound main lane. Completed placing hotmix and concrete pavement on the proposed westbound main lane. Placed concrete pavement for the new FM 551 under the IH 30 overpass. Place sidewalk on FM 551. Placed hotmix for the new FM 551 tie-ins. Switched traffic on FM 551 underneath the IH 30 overpass. Continue installing small signs and large signs on the project.

Narrative description of activities planned for next month (May): Construct pylons for the new bridge. Continue grading slopes for top soil, seeding and sod. Complete placing sidewalk and pedestrian ramps throughout project. Paint the bridge, columns, and MSE walls. Place barrier on the eastbound main lane for final configuration. Switch traffic on eastbound main lane to final configuration. Complete installing small signs and large signs on the project. Complete installing illumination throughout the project. Start working on punch list.

Traffic issues: N/A

Plans for changes in traffic patterns: Switch traffic on eastbound main lane to final configuration in the middle of May, weather permitting.

Item(s) of work currently controlling project completion: Construct pylons for the bridge.

Other items of significance: None

FM 3549 Interchange

CSJ:	0009-12-072	Schematic Approval:	February 2012
Limits:	FM 3549 at IH 30	IAJ Approval:	February 2012
Construction Cost:	\$32,822,301	100% Plans:	June 2014
Project Description:	Development and construction of an interchange at IH 30 and FM 3549	Environmental Clearance:	March 19, 2013
		ROW Acquisition Begins:	January 2014
Commissioner:	Cliff Sevier, Precinct 1	ROW Acquisition Complete:	December 2014
Firm:	CP&Y	Utility Relocations Begin:	September 2014
Key Firm Contact:	Robin Handel	Utility Relocations Complete:	June 2016
TxDOT Contact:	Brenda Callaway, Juan Paredes	DCIS Let Date:	February 9, 2016
Funding:	Pass-through financing	Construction Duration:	24 months

Current Status:

- **ROW:** All right of way in possession on December 22, 2014.
- **UTILITY RELOCATION:** Conflict analysis underway due to utilities discovered during a locate request.
 - AT&T:** Clear.
 - Farmers Electric Co-op:** Clear
 - Oncor:** Facilities along IH 30 and FM 3549/Corporate Crossing and aerial crossing of IH 30 east of FM 3549 will need to be relocated. Oncor relocations are underway but were delayed due to weather. They are now estimated to be completed in May 2016.
 - AT&T Legacy:** Clear
 - Sprint:** Clear
 - Suddenlink:** Facilities along IH 30 on Oncor poles. Suddenlink will relocate underground instead of relocating on Oncor's poles. Revisions are being made to their plans and estimate. This agreement will be submitted to ROW Division as "District Approved" once all the required agreement forms are in hand. Suddenlink estimates completion in June 2016.
- **PS&E:** Received approval to let project under TxDOT 2004 specifications.
- **Construction:** This project let on September 10, 2014, with a 180-day delay for ROW acquisition and utility relocations. Low bidder was Tradeco Infraestructura, Inc., at 30.72% over the estimate. Cost saving measures were investigated by TxDOT and ITS. Rockwall County and TxDOT agreed on a financial arrangement that covered the financial shortfall on this project. Tradeco Infraestructura, Inc. failed to execute and return construction contract. Project was re-let on February 9, 2016. Apparent low bidder was Sema Construction, with a low bid of \$32,882,301.00. There are 600 working days and 24 months of barricades. It is expected that the pre-construction meeting will be held in the May/June timeframe.
- **Funding:** Project selected for pass-through financing. The PTF agreement was fully executed on May 10, 2013, and the initial payment of \$4,418,000.00 was made by Rockwall County on June 25, 2013. Payment of \$22,037,679.37 was transmitted to TxDOT in September 2014. Payment of \$2,697,499.67 was approved on February 25, 2015.

FM 3549 (North)

CSJ:	1015-01-023	Schematic Approval:	December 3, 2015
Limits:	IH 30 to SH 66	Environmental Approval:	March 8, 2016
Estimated construction cost:	\$9,279,943	100% Plans to Austin:	Fall 2016
Project Description:	Widen existing 2-lane rural facility to a 4-lane urban roadway	ROW Acquisition Began:	February 2016
Commissioner:	Cliff Sevier, Precinct 1	ROW Acquisition Complete:	Spring 2017
Firm:	Atkins	Utility Relocations Begin:	Spring 2017
Key Firm Contact:	Thomas Le	Utility Relocations Complete:	Late 2017
TxDOT Contact:	Nancy Peron, Charles May	Anticipated Project Let Date:	January 2017
Funding:	Proposition 1	DCIS Let Date:	July 2017

Current Activities:

- **Schematic:** Schematic was approved on December 3, 2015.
- **ENV:** Meetings with the additional affected property owners that were impacted by the tie-in to SH 66 will be required. Revised Draft EA and ENV comments response were sent to TxDOT on September 8, 2015. Atkins received additional draft EA review comments from ENV on October 16, 2015, and comments were addressed and resubmitted to TxDOT on October 21. Atkins received the Satisfactory for Further Processing on November 23, 2015. Public hearing occurred on January 21, 2016. FONSI received on March 8, 2016.
- **DGNO Railroad Exhibit A:** Atkins completed and submitted the railroad scope of work to TxDOT on April 10, 2015, for TxDOT to coordinate with DGNO Railroad. TxDOT provided Exhibit A review comments on April 16, 2015.
- **PS&E:** The 60% plans were submitted to TxDOT on May 29, 2015. Signed and sealed Pavement Design Report submitted to TxDOT Dallas District. Received TxDOT's 60% plan review comments on March 10, 2016. **Preparing 90% plans to incorporate 60% plan review comments.**
- **ROW:** Final ROW maps, parcel descriptions, and ROW electronic files were submitted to TxDOT on September 16, 2015, for review. TxDOT ROW map review comments were received on November 2, 2015, and November 18, 2015. Comments are currently being addressed. **Awaiting additional SUE information from TxDOT to reduce the proposed ROW within the existing NTMWD 50' easement. Total number of parcels is 40; 22 in process of being appraised; 18 in negotiations or pending close.**
- **Utility Coordination:** Pending the development of a ROW Map and 65 Percent Plans Adequate. A Level B SUE is available. A meeting was held on March 22, 2016, to determine where additional SUE information is required to develop a Level A SUE.

FM 740 South

CSJ:	1014-03-049 & 1091-04-023	Schematic Approval:	May 2012
Limits (From):	FM 1140 North	CE Approval:	November 2012
(To):	FM 1140 South	100% Plans Submission to Austin:	May 2013
Estimated construction cost:	\$12,967,453	ROW Acquisition Begins:	November 2012
Project Description:	Widen existing 2-lane facility to a 4-lane divided urban roadway	ROW Acquisition Complete:	August 2014
Commissioner:	Lee Gilbert, Precinct 2	Utility Relocations Begin:	June 2014
Firm:	Lochner	Utility Relocations Complete:	April 2016
Key Firm Contact:	Greg Delgado	Project Let:	August 6, 2013
TxDOT Contact:	Brenda Callaway/Juan Paredes	Construction Start Date:	July 20, 2015
Funding:	Proposition 12	Anticipated Project Completion:	August 2017

Current Activities:

- **ROW:** All parcels are in possession.
- **Utility Coordination:** Utility coordination meetings are scheduled for the second Wednesday of every month. Transite or asbestos pipe for an abandoned waterline has been discovered along Lawrence Drive. Removal of this pipe started on February 8, 2016. Removal of transite/asbestos pipe that was an abandoned waterline is complete.
 - **City of Heath:** Relocations are complete.
 - **Atmos:** Relocations are complete.
 - **Oncor:** Relocations are complete.
 - **AT&T:** Relocations are complete.
 - **Suddenlink:** Relocations are complete.
 - **Connexions:** Relocations are complete.
- **PS&E:** Plans were submitted to TxDOT on April 1, 2013.
- **Construction:** Project let on August 6, 2013. Contract was awarded to Ed Bell Company for a low bid of \$12,967,453.00. There was a 270-day delayed start in the construction contract to allow for right-of-way acquisition and utility adjustments. Contractor began work on July 20, 2015. See attached construction report.

TxDOT Monthly Project Report for the Rockwall Consortium

Date of report: April 26, 2016

Report prepared by: Juan A. Paredes, P.E.

Project: **C 1014-3-49**

CSJ: **1014-03-049, etc.**

Highway: **FM 740**

Limits: **From FM 1140 North to FM 1140 South**

Contractor: **Ed Bell Construction Co.**

TxDOT Project Engineer: Juan A. Paredes, P.E.

TxDOT Project Manager: Adam Clements

Phone: (972) 962-3617

Contractor's Superintendent: Karl Butler

Date Work Began: July 20, 2015

Anticipated Completion Date: August 2017

Current (April) activities: Continue placing storm sewer pipe and inlets for Line F and Line D. Atmos completed the relocation of gas line in conflict at the intersection of FM 740 and FM 1140.

Narrative description of last month's (March) activities: Completed the removal of asbestos pipe on the north section. Pipe crew remobilized back in the week of March 14, 2016. Continue placing storm sewer pipe. Atmos to complete the relocation of gas line in conflict at the intersection of FM 740 and FM 1140.

Narrative description of activities planned for next month (May): Continue placing storm sewer pipe and inlets in Line B and Line L. Construct detour at the intersection of FM 740 and FM 1140 to switch traffic to Phase 2. Place LPCB for Phase 2 of construction. Switch traffic to Phase 2 of construction. Remove existing roadway from FM 550 to FM 1140.

Traffic issues: None

Plans for changes in traffic patterns: Switch traffic to Phase 2 from FM 550 to FM 1140 in the middle of May, depending on progress of work due to weather.

Item(s) of work currently controlling project completion: Completing detour at the intersection of FM 740 and FM 1140.

Other items of significance: Receiving non-responsive tickets from utility locates.

FM 552

CSJ:	1017-01-015	Schematic Approval (District):	*
Limits:	SH 205 to SH 66	FHWA-CE Approval:	*
Estimated construction cost:	\$46 million	100% Plans to Austin:	*
Project Description:	Widen existing 2-lane facility to a 4-lane divided urban roadway	ROW/Utility Relocations Begin:	*
Commissioner:	Cliff Sevier, Precinct 1	ROW/Utility Relocations Complete:	*
TxDOT Project Manager:	Nancy Peron	Anticipated Project Let Date:	*
Firm:	HNTB	DCIS:	*
Key Contact:	Dan Chapman	Construction Complete:	*

Current Activities:

- **ENV:** HNTB has completed initial environmental data collection and submitted a Draft Environmental Constraints Map to TxDOT Dallas for review. The Public Meeting was held on April 10, 2014. HNTB submitted comment responses to TxDOT on May 27, 2014. HNTB submitted revised Public Meeting Summary to TxDOT District and ITS on November 19, 2014.
- **Schematic:** HNTB submitted the revised hydraulic report and schematic to TxDOT District Office on October 3, 2013. HNTB received additional comments on the hydraulic report from TxDOT District Office on October 10, 2013, and revised the hydraulic models and provided clarification on October 10, 2013.
- On April 2, 2014, TxDOT, HNTB, ITS, and Halff Associates met with Lavon Special Utility District representatives to present alternative configurations for the FM 552 and SH 66 interchange to minimize impacts to proposed pump station improvements by LSUD near the interchange.
- HNTB is currently developing a scope for the updated schematic and environmental documents for the 4-lane arterial section and plan to submit a draft by mid-December 2015.
- **ROW:** HNTB has submitted to the County a current ROE status map graphically documenting ROE letter responses along the corridor.
- **Utility Coordination:** Pending the development of a ROW Map and 65 Percent Plans Adequate.
- **Other:** AFA was executed by Rockwall County Commissioners Court on Tuesday, May 8, 2012. The AFA was executed by TxDOT on June 12, 2012.
- ITS submitted a TIP modification in the October 2015 cycle to reduce the number of lanes planned from six to four.
- HNTB is working on a supplemental agreement to the contract to revise the schematic to a four-lane arterial to match the revisions of FM 552 on the thoroughfare plan.

SH 276

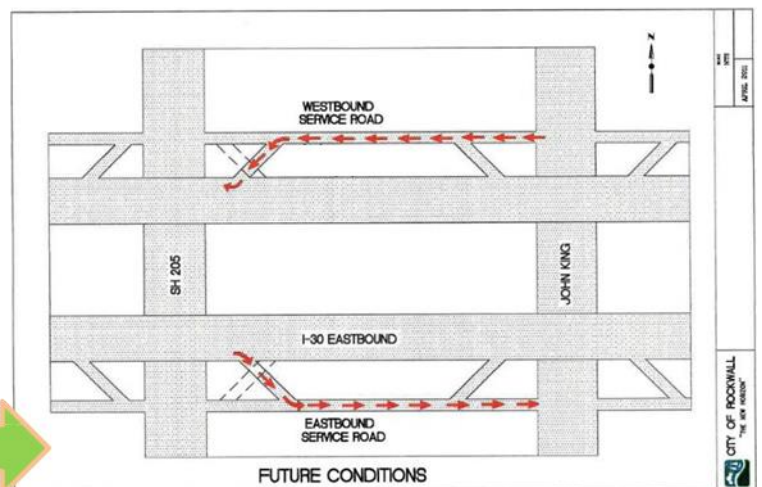
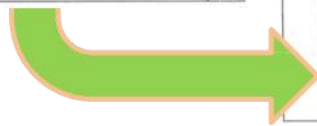
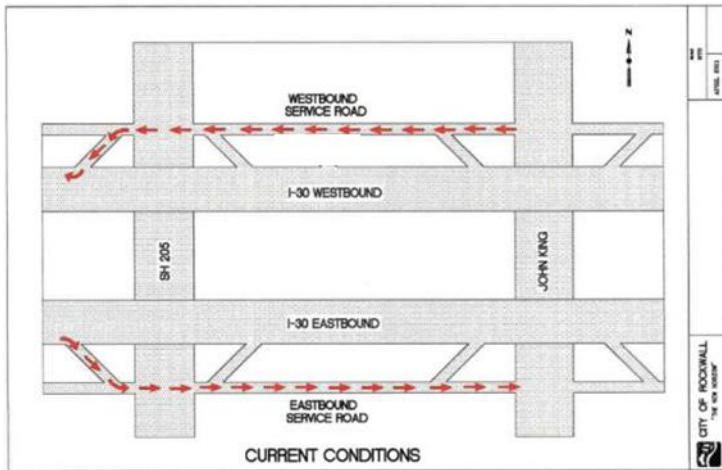
CSJ:	1290-02-017	Schematic Approval:	July 9, 2015
Limits:	SH 205 to FM 549	Environmental Clearance:	February 24, 2016
Estimated construction cost:	\$17,268, 421	100% Plans to Austin:	Three months prior to let
Project Description:	Widen existing 2-lane facility to a 4-lane divided urban roadway	ROW Acquisition Began:	January 2016
		ROW Acquisition Complete:	May 2017
Commissioner:	Dennis Bailey, Precinct 3	Utility Relocations Begin:	April 2017
Firm:	CH2MHill	Utility Relocations Complete:	September 2017
Key Contact:	Will Barresi/Brian Clark	Anticipated Project Let Date:	September 2017
TxDOT Contact:	Ali Taheri	DCIS Let Date:	*
Funding:	Proposition 1	Construction Complete:	*

Current Activities:

- **Schematic:** Schematic was approved by the District on July 9, 2015.
- **Environmental:** FONSI received on February 24, 2016. Noise wall workshop invitations have been mailed out for a May 4, 2016, meeting.
- **PS&E:** A preliminary 100% plan set was submitted on November 26, 2015. The final PS&E will need to be submitted three months before contract letting. CH2MHill attended meeting with TxDOT on February 22, 2016, to discuss storm water treatment unit changes. Submitted proposed design changes to the storm sewer system and the storm water treatment units to TxDOT for consideration before revising the plans. Coordinated with Dannenbaum on the FM 549 project and adjusted pavement accordingly. Submitted proposed design changes to the storm sewer system and the Storm Water Treatment Units (SWTU) to TxDOT for consideration in March. TxDOT is considering appropriate method of treatment on district-wide basis. CH2MHill will update plans accordingly based on TxDOT's direction.
- **ROW:** Preliminary ROW map has been reviewed by the District office. CH2MHill revised ROW maps per TxDOT comments and resubmitted to TxDOT for review on July 2, 2015. ROW map is approved. Kick-off meeting for right-of-way acquisition held in February 2016. There are 32 parcels for acquisition; 11 offers accepted; 16 parcels in negotiation; 3 parcels are in ED; 2 parcels may be deleted.
- **Utility Coordination:** Plans Adequate for utility relocation were sent to utility companies on February 9, 2015, by the Area Office. TxDOT and the City of Heath are working to determine if water line is in conflict. CH2MHill began working with ITS to add utility conflict analysis and utility coordination services for Level A SUE. CH2MHill met with TxDOT on January 22, 2016, for a conflict analysis meeting. Dallas District Utility Coordinator began monthly meetings with CH2MHill to determine actual conflicts. CH2MHill prepared utility conflict analysis and continued utility coordination services. Monthly meetings with TxDOT ongoing to determine conflicts. Supplemental Agreement with CH2MHill to include utility conflict analysis was approved by commissioners court on April 26, 2016.

IH 30 Ramp Reversal Project

CSJ:	0009-12-214	Schematic Approval:	December 9, 2015
Limits:	From SH 205 to John King	CE Approval:	March 10, 2016
Construction Cost:	\$3,485,857	100% Plans to Austin:	January 11, 2016
Project Description:	The proposed project will replace existing westbound exit ramp from IH 30 with an entrance ramp and replace the existing eastbound entrance ramp east of SH 205 with an exit ramp	ROW/Utility Relocations Begin:	NA
		ROW/Utility Relocations Complete:	NA
Commissioner:	Lee Gilbert, Precinct 2	Project Let Date:	April 6, 2016
Firm:	HDR	Construction Start:	*
Key Contact:	Phil Ullman	Construction Complete:	*



Current Activity:

- **Schematic:** HDR resubmitted the IAJ report by February 26, 2016. IAJ approved March 10, 2016. Schematic reapproved on March 10, 2016.
- **Environmental:** Project cleared on March 10, 2016.
- **PS&E:** The 100% PS&E submitted on January 11, 2016.
- **Funding:** Funding for engineering will be provided by Rockwall County. Funding for construction will be provided by the City of Rockwall. LPAFA with TxDOT approved on October 14, 2014. ICA Amendment #1 approved by City of Rockwall on March 7, 2016. ICA Amendment #1 approved by Rockwall County Commissioners Court on April 12, 2016. AFA Amendment #1 with TxDOT approved by Rockwall County Commissioners Court on April 12, 2016.
- **Construction:** Project let on April 6, 2016. The low bidder was Ed Bell Construction with a low bid of \$3,485,857.41, at 18.56% over the estimate. There are 155 working days and 6 months of barricades.

Regional Transportation Council Updates

Current Activity:

- There were no items to discuss from the April RTC meeting.

SH 66 Interim Project

CSJ:	0009-04-061; -065	Schematic Approval:	November 2015
Limits:	From SH 205 to county line	Public Meeting:	*
Construction Cost:	\$15,872,363	Environmental Clearance:	November 2015
Project Description:	Rehabilitate existing 2-lane facility, widen shoulders, and add turn lanes at various intersections	ROW Acquisition Begins:	April 2016
Commissioner:	David Magness, Precinct 4	ROW Acquisition Complete:	June 2016
Firm:	Halff	Utility Relocations Complete:	February 2017
Key Firm Contact:	Mike Romanowski, Chad Gardiner	Let Date:	March 2, 2016
TxDOT Contact:	Nancy Peron	Construction Complete:	Summer 2018

Current Activities:

- For interim project, the County will develop environmental document for intersection improvements, and TxDOT will focus on the pavement rehab and shoulder widening. TxDOT will fund PS&E development of all improvements. TxDOT will let improvements and oversee construction.
- **Environmental:** TxDOT Dallas District environmentally cleared the intersection improvements for CSJ 0009-04-065 on November 20, 2015. TxDOT Dallas District environmentally cleared the pavement improvements for CSJ 0009-04-061 on January 12, 2016.
- **PS&E:** Halff submitted 100% PS&E plans on January 5, 2016.
- **Utilities:** Utilities in conflict include AT&T, Connexions Telcom, North Texas Municipal Water District, Charter Communications, Oncor Electric Delivery, Farmers Electric, and City of Fate. Anticipate no effect on construction. Utility coordination meeting held on March 23, 2016. Monthly utility coordination meetings will be held.
 - **City of Fate:** Utility conflicts at driveways, concrete rip rap and ditch grading. Estimated completion date is June 14, 2016.
 - **AT&T:** Utility conflicts at driveways, concrete rip rap and ditch grading. Estimated completion date is September 1, 2016. Also conflict in areas where right turn lanes are proposed. Estimated clearance date is February 1, 2017.
 - **NTMWD:** Conflict at culvert 5, Dismore and FM 552. Estimated clearance date is December 31, 2016.
- **ROW:** The updated ROW map was submitted to TxDOT Dallas District on December 9, 2015. **ROW LPA with TxDOT was approved by commissioners court on April 26, 2016.**
- **Construction:** The project let on March 2, 2016. The apparent low bidder is APAC with a low bid of \$15,872,363.00. There are 505 working days and 24 months of barricades.
- **Other:** **AFA with TxDOT was approved by commissioners court on April 26, 2016.**

SH 66 Ultimate Project

CSJ:	0009-04-060; 0009-04-064; 0009-05-012	Public Meeting:	February 28, 2013
Limits:	SH 205 to county line	Schematic Approval:	*
Estimated construction cost:	\$95.7 million	Environmental Clearance:	*
Project Description:	Widen existing 2-lane facility to a 4-lane divided urban roadway	ROW Acquisition Begins:	*
Commissioner:	David Magness, Precinct 4	ROW Acquisition Complete:	*
Firm:	Halff	Utility Relocations Complete:	*
Key Firm Contact:	Mike Romanowski, Chad Gardiner	Let Date:	*
TxDOT Contact:	Nancy Peron	Construction Complete:	*

Current Activities:

- On March 26, 2013, Royse City Council passed a resolution calling for the county to reconsider the Texas 66 couplet alignment incorporating Church Street as the westbound lanes of SH 66. Royse City mayor will be providing a letter to Rockwall County Commissioners Court requesting that SH 66 proposed improvements end at Erby Campbell Boulevard. At this time, the city is unable to secure support for a preferred alignment between Erby Campbell and FM 1777. Halff updated the February 28, 2013, Public Meeting Summary and Analysis document to incorporate feedback from Royse City and submitted the revised document to TxDOT on May 21, 2013.
- Halff coordinated with Atkins and TxDOT regarding the design of the SH 66/FM 3549 intersection.
- **ENV:** Halff has completed field surveys and preliminary data reports to determine potentially historic properties along SH 66. A public meeting was held on February 28, 2013. Efforts related to the final development of the EA document are on hold until further notice.
- **Schematic:** Halff verified that the proposed FM 3549 improvements are facilitated by the SH 66 proposed improvements.
- ITS met with Royse City regarding SH 66 Ultimate. City has requested extending limits of EA to FM 1777.
- Halff reviewed the draft NCTCOG 2040 MTP update and provided comments to TxDOT regarding the ultimate plan for SH 66.

FM 549 (South)

CSJ:	1015-01-024	Schematic Approval:	February 2017
Limits:	SH 276 to SH 205	FHWA-CE Approval:	*
Estimated construction cost:	\$17,859,194	100% Plans to Austin:	May 2018
Project Description:	Widen existing 2-lane rural facility to a 4-lane urban roadway	ROW Acquisitions Begin:	*
		ROW Acquisition Complete:	*
Commissioner:	Dennis Bailey, Precinct 3	Utility Relocations Begin:	*
Firm:	Dannenbaum	Utility Relocations Complete:	*
Key Firm Contact:	Danny Everett	Anticipated Project Let Date:	*
TxDOT Contact:	Nancy Peron	DCIS:	*

Current Activities:

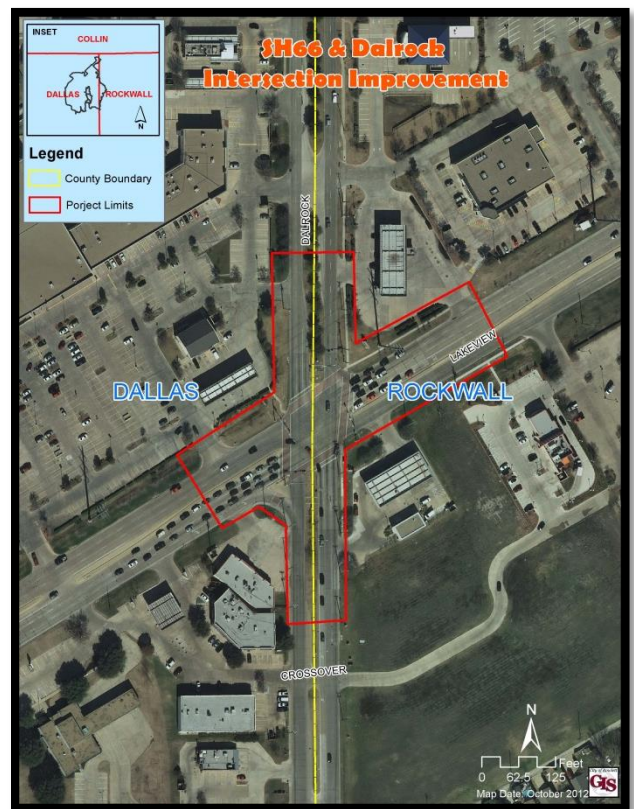
- **Schematic:** Dannenbaum submitted updated schematic, hydraulic report, and environmental constraints report to TxDOT on October 24, 2014. TxDOT sent additional hydraulic comments to Dannenbaum on January 27, 2015.
- Dannenbaum finalized cross drainage structures.
- Civil Associates performed the noise analysis and submitted it with the revised environmental constraints report.
- City of Rockwall requested that the cross drainage culverts be upsized to convey a 100-year design storm. Dannenbaum upsized all of the cross drainage structures to a 100-year storm. The Rockwall City Council approved the city paying for the estimated increase in cost for the upsizing.
- Dannenbaum submitted the electronic copy of schematic to TxDOT District and addressed comments. Dannenbaum received TxDOT Dallas District comments on November 13, 2015.
- Dannenbaum is realigning north end of project at SH 276 and coordinating project with CH2MHill.
- Dannenbaum is preparing a supplemental to reduce the design to four lanes to conform to the new thoroughfare plan. Dannenbaum is beginning realignment of corridor to 4-lane roadway resulting in a reduction of width of ROW as well. Redesign will reduce impacts to adjacent property owners.
- **ENV:** Dannenbaum revised environmental constraints report and submitted to TxDOT in mid-January 2015. Environmental Constraints Report with noise analysis was submitted on March 3, 2015. Comments were received from TxDOT on ENV constraints report on May 5, 2015. Revised ENV constraints report submitted to TxDOT on May 20, 2015, for final approval. Public meeting was held on December 10, 2015, at the Rockwall County Courthouse. Dannenbaum submitted the Public Meeting Summary on February 23, 2016.
- **PS&E:** Will be responsible for providing the PS&E once the schematic has been approved.
- **ROW:** Pending Environmental Clearance and the development of the ROW Map.
- **Utility Coordination:** Pending the development of a ROW Map and 65 Percent Plans Adequate.
- **Other:** ITS submitted a TIP modification in the January 2016 cycle to reduce the number of lanes planned from six to four.

SH 66 and Dalrock Intersection Improvements

Limits:	At Dalrock Road	Environmental Clearance:	*
Estimated construction cost:	\$1,092,405	100% Plans:	*
Project Description:	Improve existing intersection to urban intersection with additional left-turn and right-turn lanes	ROW Acquisitions Begin:	*
		ROW Acquisition Complete:	*
Commissioner:	Lee Gilbert, Precinct 2	Utility Relocations Begin:	*
Firm:	Rowlett, Walter Allison/ Lee Engineering, Kelly Parma	Utility Relocations Complete:	*
TxDOT Project Manager:	Ali Taheri	Anticipated Project Let Date:	*

Current Activity:

- Lee Engineering submitted 95% plans for city and TxDOT review on July 9, 2015. TxDOT East Dallas Area Office has completed the review of the plans. TxDOT informed Lee Engineering that if any state or federal funding is used for the project, then additional TxDOT reviews would be required.
- Lee Engineering received comments from the TxDOT District Office and is working to incorporate those into the design plans. Based on TxDOT's comments, Lee Engineering will also need to obtain schematic and environmental clearance on the project before the next submittal.
- The project is on hold until the funding is finalized and a bid date is set.
- Lee Engineering is working to produce ROW acquisition documents and beginning coordination with franchise utilities in the area.
- Lee Engineering and the City of Rowlett met with TxDOT on November 30, 2015, to discuss their comments and to move the project forward. Lee Engineering is working to create a revised scope to address the additional information required as a result of potentially receiving federal funds for the project. Lee Engineering provided to the city a revised scope to address the federal funding component of the project. **Awaiting approval of scope before addressing and incorporating TxDOT comments.**



SH 205

CSJ:	0451-03-013; 0451-02-028; 0451-01-053; 0451-04-021	Schematic Approval:	Spring 2016
Limits:	US 80 to SH 78	Environmental Approval:	*
Estimated construction cost:	\$200 million	100% Plans to Austin:	*
Project Description:	Widen from 2-lane rural to 4-lane urban divided with allowance for ultimate 6 lanes	ROW Acquisitions Begin:	*
		ROW Acquisition Complete:	*
Firm:	Halff	Utility Relocations Begin:	*
Key Firm Contact:	Matt Craig	Utility Relocations Complete:	*
TxDOT Contact:	Nancy Peron	Anticipated Project Let Date:	*

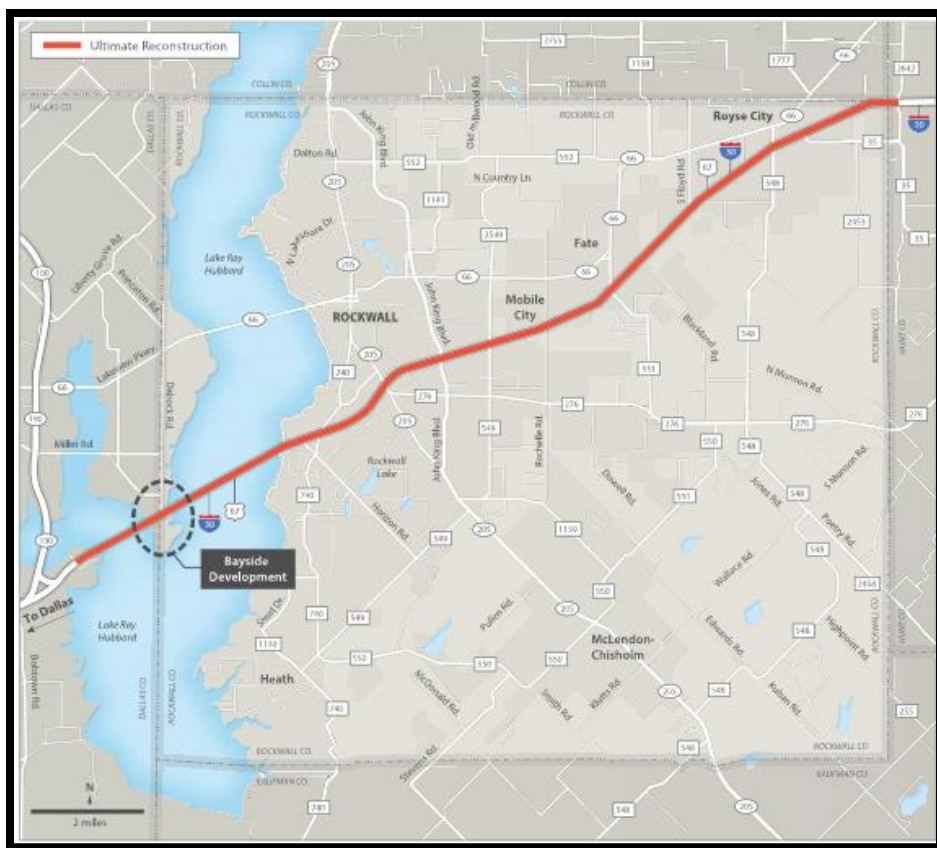
Current Activity:

- Schematic:** Halff submitted the 30% schematics for the other segments of the project on October 2, 2015. Halff is continuing to coordinate with TxDOT on the potential John King alternative around the City of Rockwall.
- North project (FM 549 to SH 78):** Project is still in the alternatives analysis phase with internal coordination between TxDOT and the City of Rockwall ongoing. Halff held a coordination meeting at TxDOT with the City of Rockwall on March 9, 2016, to discuss the north project. Halff met with the City of Rockwall on April 6, 2016, to discuss alternatives analysis for the City of Rockwall portion of the project and answered questions. Follow-up coordination meeting with City of Rockwall scheduled for May 6, 2016. Halff is continuing efforts on the alternatives analysis for the north project. Halff anticipates holding a public meeting in late summer for the north project.
- South project (US 80 to FM 549):** Project is moving forward with the schematic/environmental document. Halff submitted to TxDOT a 60% schematic on the southern project and is anticipating a public meeting in May/June 2016. Halff has sent out right-of-entry letters to adjacent property owners on the southern project for purposes of field surveying work associated with design efforts.



IH 30 Corridor Study

CSJ:	0009-11-238, 0009-12-215, 0009-13-955; 0009-12-908
Limits:	From Bass Pro to FM 2642
Estimated construction cost:	*
Project Description:	Widen to 6-lane main lanes; construct or reconstruct continuous 4-lane frontage roads; reconstruct ramps and bridge structures and IH 30/FM 2642 interchange
Firm:	Brown & Gay
Key Firm Contact:	*
TxDOT Contact:	John Nguyen



Current Activity:

- 1) Project Scope: Ultimate Reconstruction (CSJs: 0009-11-238, 0009-12-215, 0009-13-955)
Project Limit: From Bass Pro to FM 2642
 - Widen to 8-lane eastbound and westbound main lanes from Bass Pro to SH 20 and widen to 6 lanes from SH 205 to FM 2642;
 - Construct/reconstruct continuous 4-lane eastbound and westbound frontage roads within the corridor limit (2 lanes in either direction), including new frontage road bridge structures across Lake Ray Hubbard;

- Reconstruct ramps and bridge structures necessary to accommodate interim improvements with exception to John King, Erby Campbell, FM 3549, and FM 551;
 - Reconstruct interchange of IH 30 at FM 2642;
 - Submitted to NCTCOG for Mobility 2040 Plan.
- 2) Project Scope: Interim Improvements (New CSJ: 0009-12-908)
Project Limit: SH 205 to FM 2642
- **TxDOT is no longer pursuing this project.**
- 3) Project Scope: Bayside Development at Dalrock (New CSJ: 0009-11-xxx)
Project Limit: East of Dalrock to Dalrock
- Construct new bridge at Bayside Drive; Reconstruct Dalrock Interchange; Reconstruct ramps to Dalrock to serve both Bayside Development and Dalrock
- TxDOT hired consultant Brown & Gay in December 2015. Met with Brown & Gay on January 7, 2016. SUE plans are being finalized. Topo, aerial, digital terrain, and existing ROW received from LTRA. Brown & Gay is scheduling kick-off meeting with stakeholders and local cities for February 2016. Brown & Gay has obtained bridge inspection reports and is evaluating existing bridge conditions. TxDOT and ITS will meet for an informal project kick-off meeting and will then coordinate a formal project kick-off meeting with stakeholders.
 - TxDOT met with ITS on March 3, 2016, to receive input on project from local perspective.
 - TxDOT held environmental preparation kick-off meeting with consultant on March 31, 2016.
 - Consultant to begin schematic development and prepare environmental documentation.
 - Anticipated schematic submittal to FHWA for review in fall 2016.
 - **On April 12, 2016, TxDOT met with Dallas Water Utilities to discuss Lake Ray Hubbard and potential project impacts.**
 - **TxDOT and consultant reviewed MTP and conformity for IH 30 entries.**
 - **TxDOT to provide presentation to Rockwall County Consortium regarding project.**