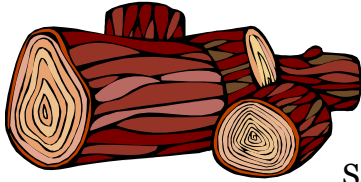


Brush, bulk pick up Information:



Allied Waste provides brush and bulky waste pick up. Zone 1 is picked up the weeks of the 1st and 3rd Mondays. Zone 2 is picked up the weeks of the 2nd and 4th Mondays. Please put out your items no earlier than 7:00 am on Saturday prior to the dates below, and no later than 7:00 am on Monday.

- **The pick up will be Monday through Friday of the scheduled week.**
- Items will not be picked up in the alley. All items have to be placed out front for pick up.
- **Please do not place items under trees, electric wires, in the street or on top of your water meter.**
- Brush includes tree trimmings, leaves, and grass clippings.
- Bulky waste includes stoves, refrigerants (*which have CFC's removed by a certified technician*), water tanks, washing machines, furniture and other things of this nature.
- **Bulk items should contain no hazardous waste material or construction material. Rock, excavation dirt, scrap building material or other trash resulting from construction or major remodeling will not be removed by Allied Waste.** Fencing must be no larger than 6' x 3' x 3', no fence post with concrete attached will be accepted.