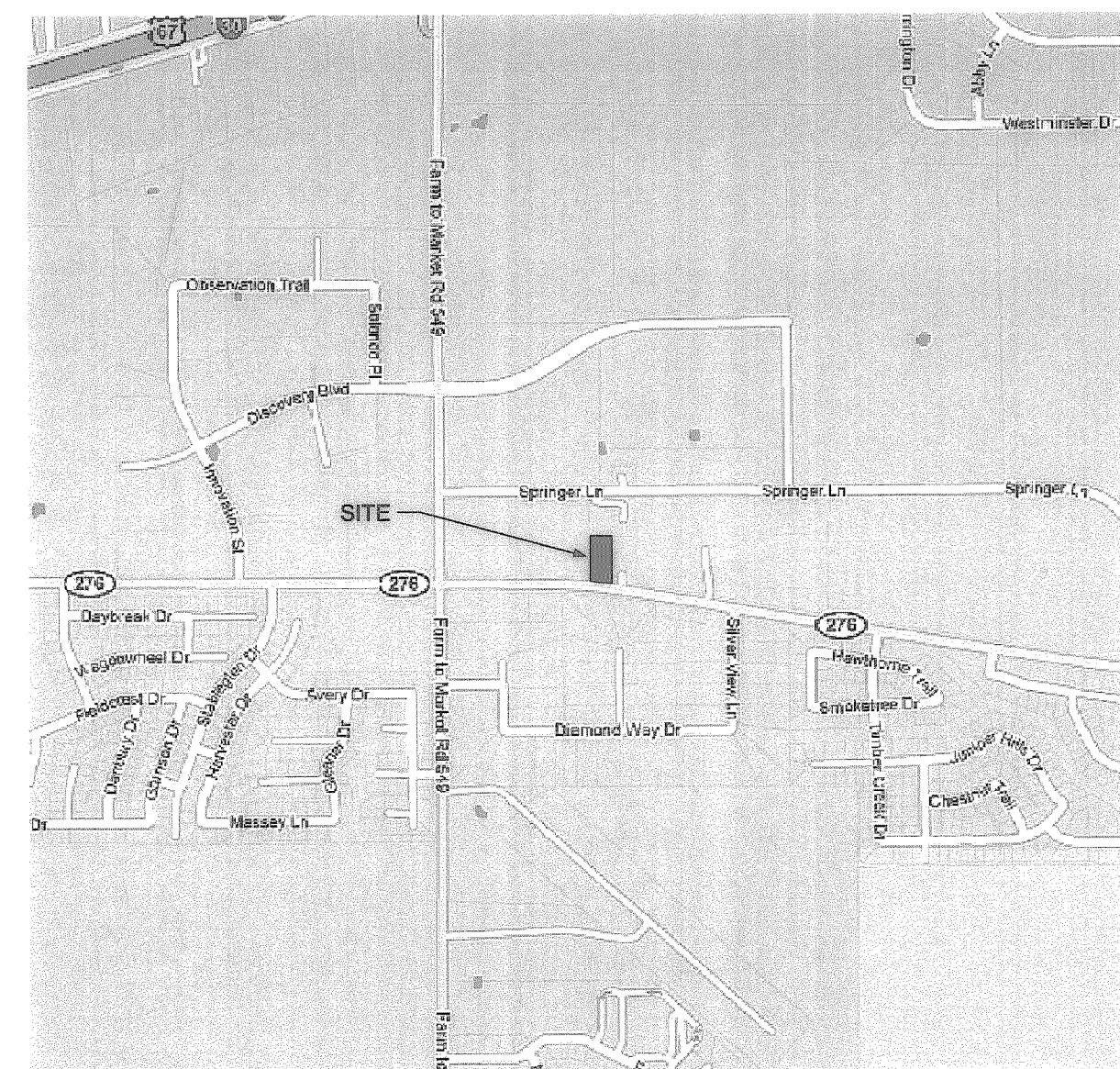
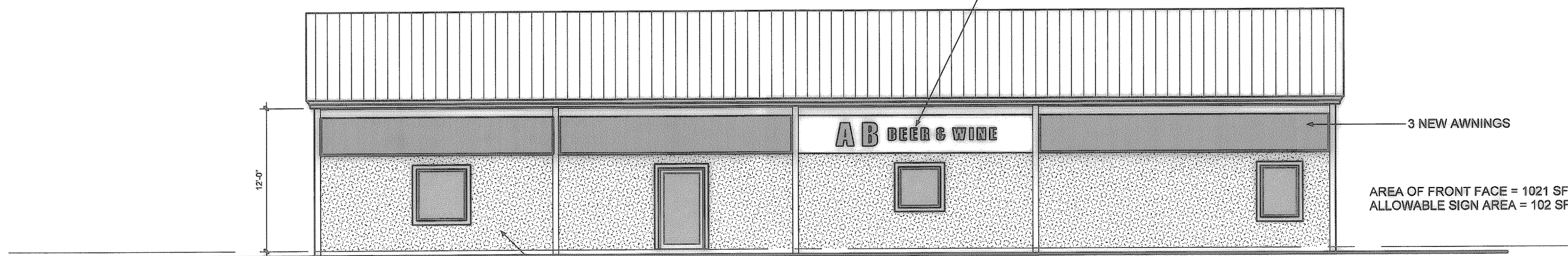
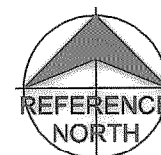


07 PHOTOMETRIC PLAN  
SCALE: 1" = 20'-0"

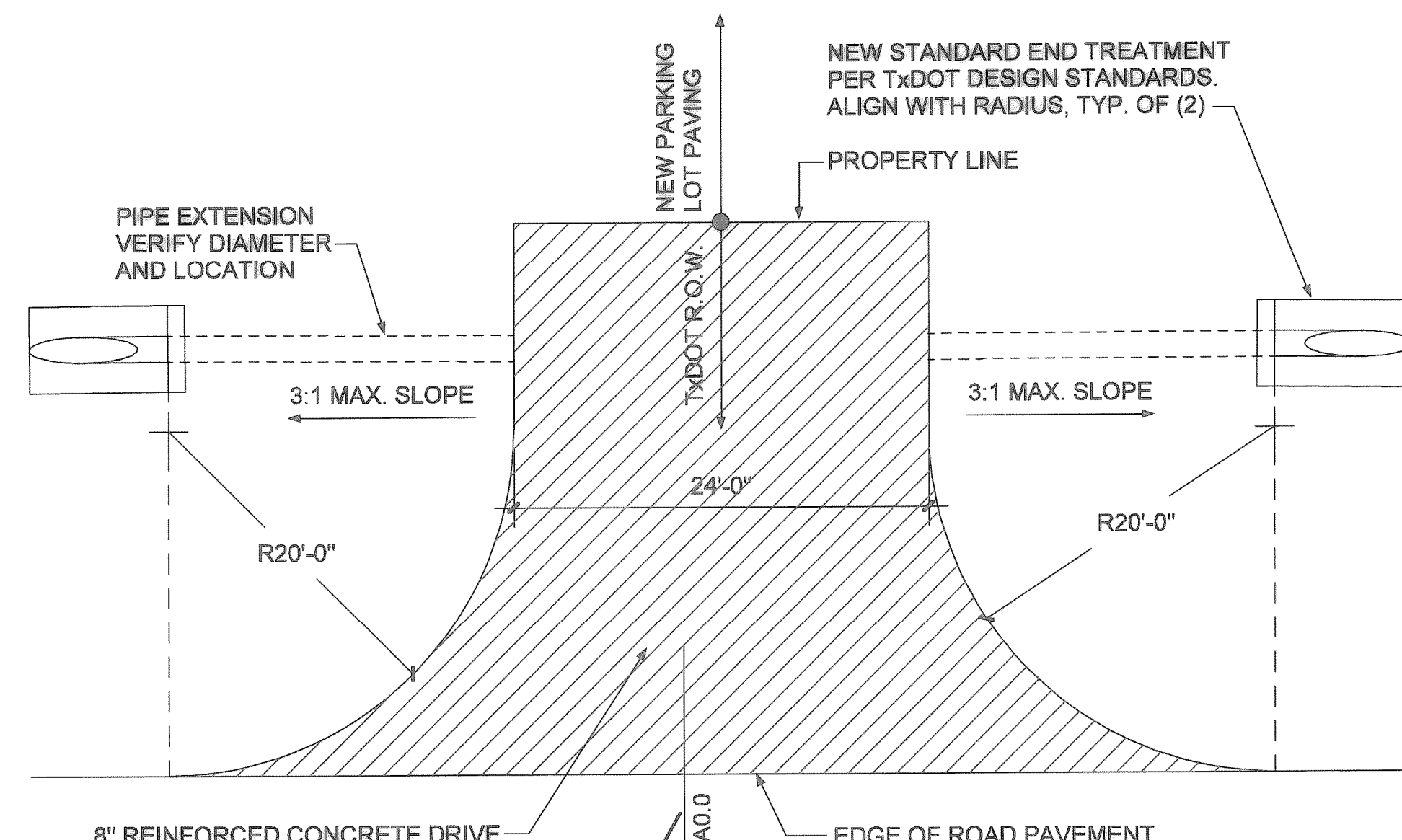
PAKING LOT LIGHTING TO BE:  
LITHONIA KAD/POLE COMBO, 175 WATT,  
FULL CUTOFF, PULSE START, WITH  
16" MODEL SSS SQUARE ANCHOR BASE POLE



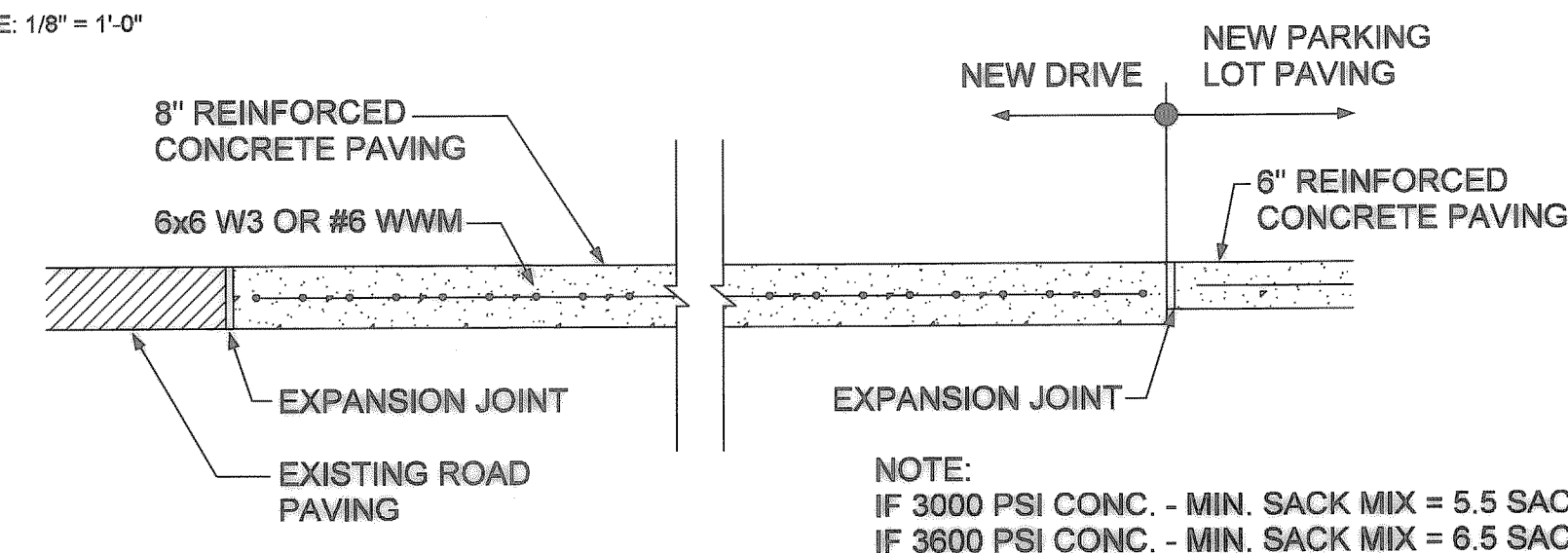
00 LOCATION MAP  
SCALE: NTS



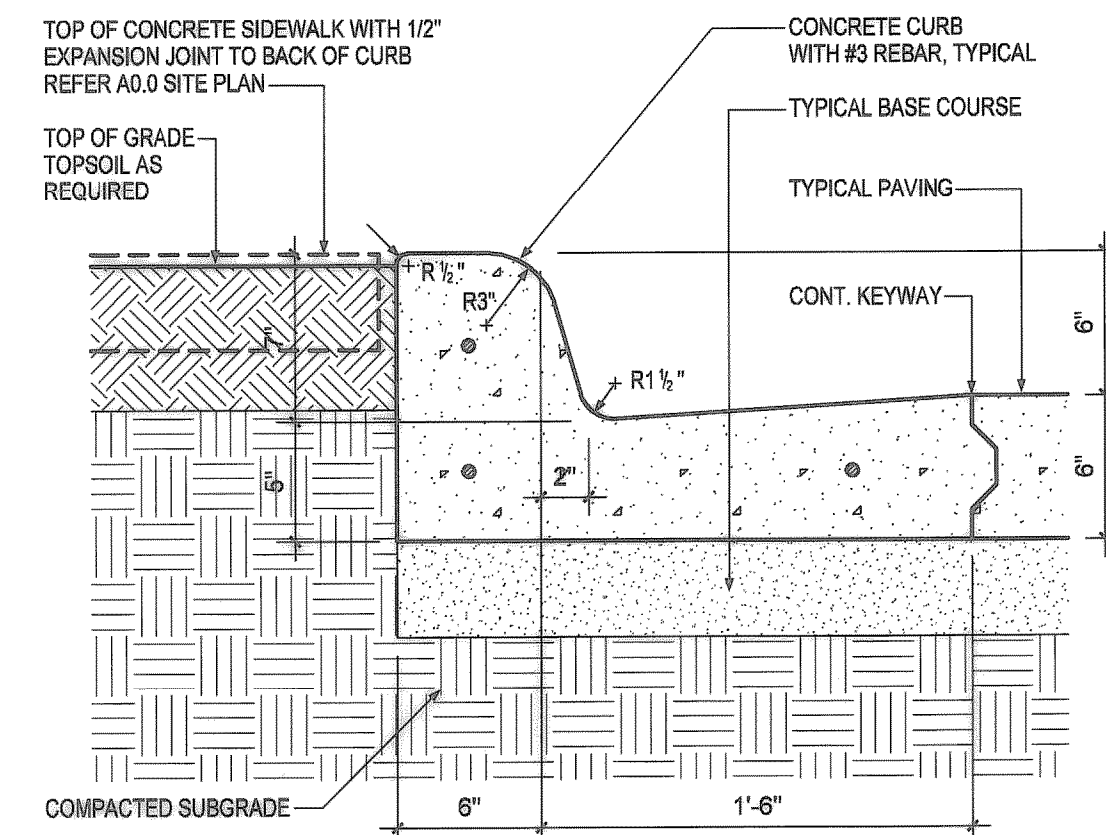
02 SOUTH ELEVATION  
SCALE: 1/8" = 1'-0"



04 R.O.W. DRIVE PLAN  
SCALE: 1/8" = 1'-0"



05 R.O.W. DRIVE SECTION  
SCALE: 1/2" = 1'-0"



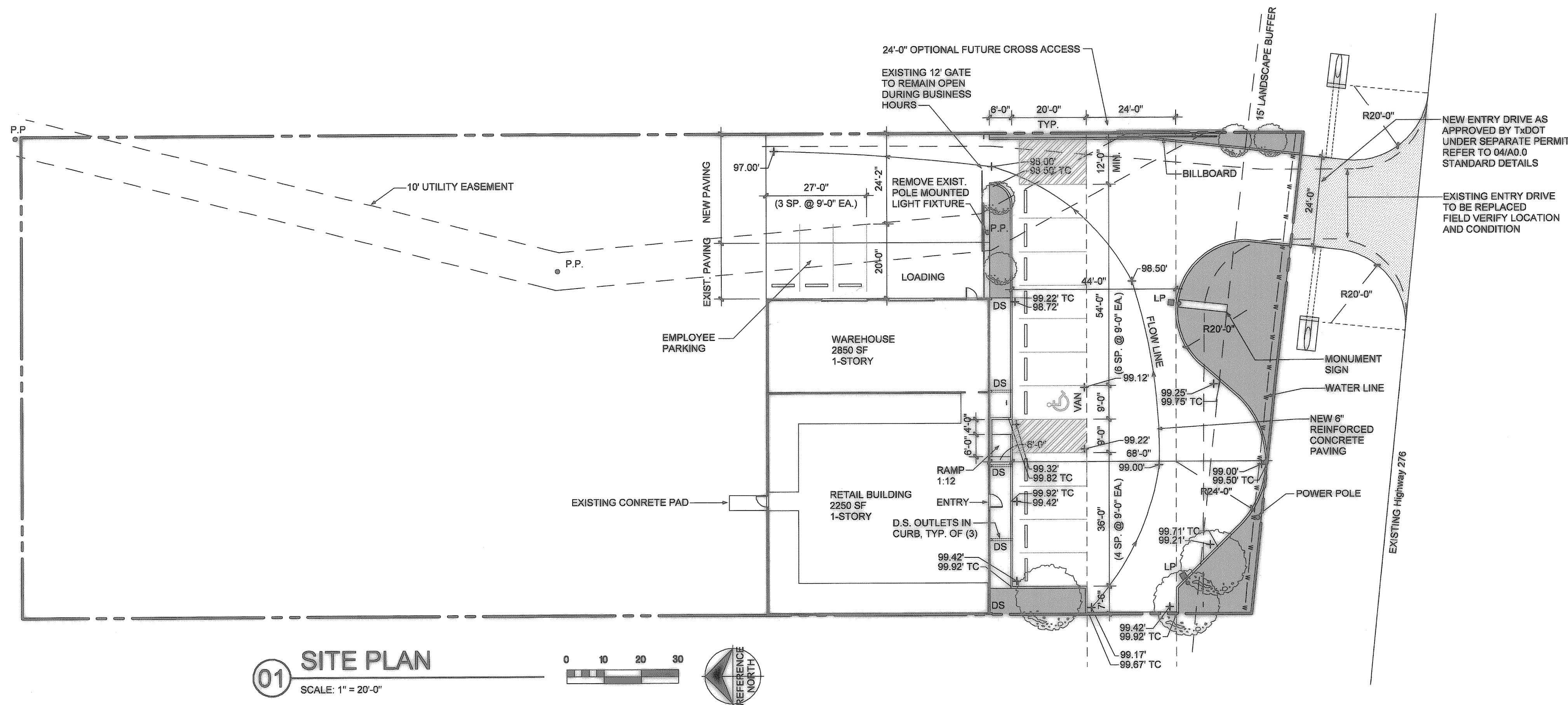
06 CURB DETAIL  
SCALE: 1 1/2" = 1'-0"

NOTE:  
SIGNS TO BE APPROVED UNDER  
SEPARATE PERMIT



PROPOSED MONUMENT SIZE = 7' H X 14' L  
PROPOSED SIGN FACE AREA = 80 SF

03 MONUMENT SIGN  
SCALE: 1/8" = 1'-0"

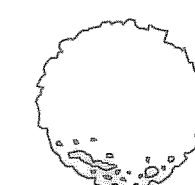


01 SITE PLAN  
SCALE: 1" = 20'-0"

## TABULATIONS

SITE	43,595 SF	1.00 AC
SITE COVERAGE:		
PAVING	10,059 SF	23.07%
WALKS	470 SF	01.05%
LANDSCAPE	27,966 SF	64.15%
BUILDING	5,100 SF	11.70%
PARKING:		
REQUIRED PARKING	12 CARS	(RETAIL - 9 CARS, WAREHOUSE - 3 CARS)
PROVIDED PARKING	14 CARS	
REQUIRED HCP PARKING	1 CAR	

## PLANT LEGEND



CANOPY TREE - 3 REQUIRED  
4" RED OAK (*Quercus shumardii*), OR AS SELECTED BY OWNER FROM  
APPROVED PLANT LIST



ACCENT TREE - 4 REQUIRED  
4" HEIGHT MIN. BRAEFORD PEAR (*Pyrus calleryana* 'Bradford'), OR AS  
SELECTED BY OWNER FROM APPROVED PLANT LIST

## RECORD DRAWING

**AB Beer & Wine**  
2305 Hwy 276, Rockwall, TX

Harry Singh  
565 West Oats Drive, #115, Garland, TX 75043  
**PROPOSED SITE PLAN & ELEVATION**

Date	06/13/2011
Revisions	
06/16/2011	CONCEPT
06/20/2011	CONCEPT
06/24/2011	REVIEW
07/05/2011	SITE PLAN REVIEW
07/14/2011	REVISIONS
07/15/2011	REVISIONS

Project Number  
11-260

Sheet Number  
**A0.0**