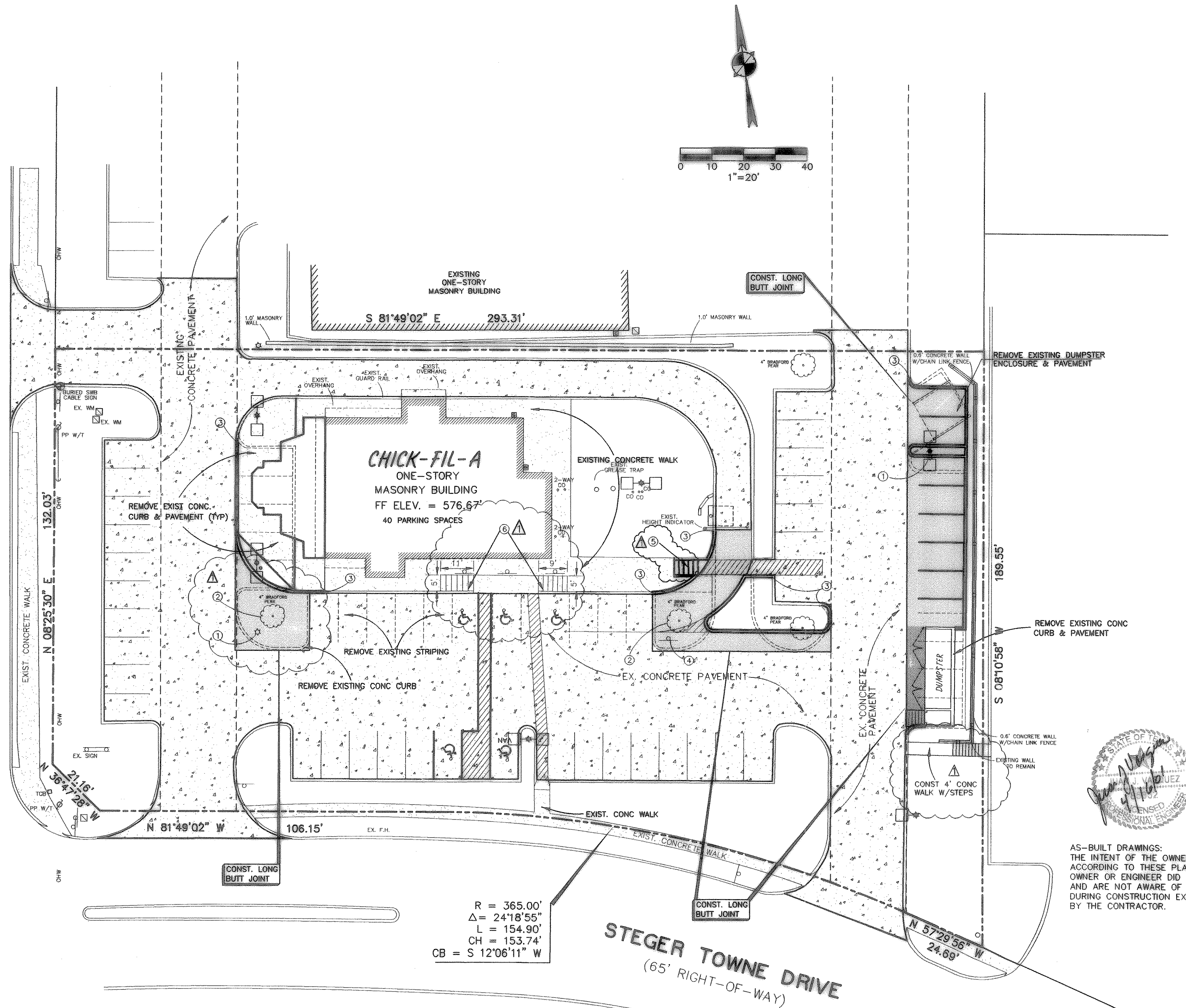


(F.M. 740) RIDGE ROAD
(90' RIGHT-OF-WAY)



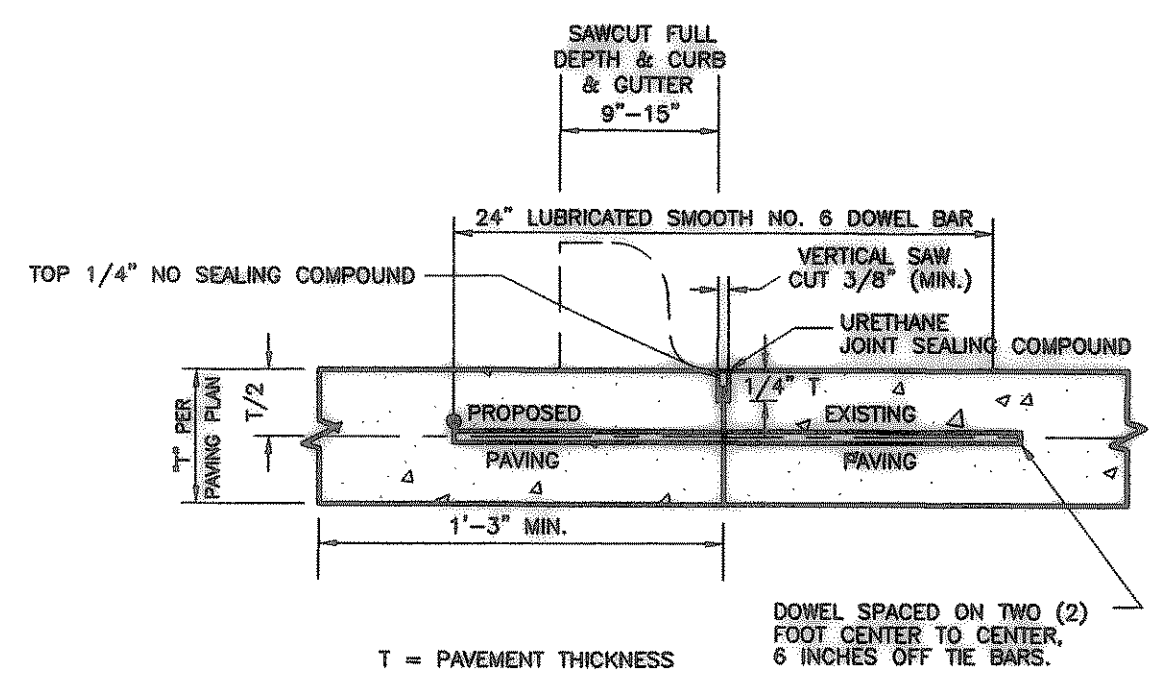
R = 365.00'
Δ = 24°18'55"
L = 154.90'
CH = 153.74'
CB = S 12°06'11" W

STEGER TOWNE DRIVE
(65' RIGHT-OF-WAY)

LEGEND

- 5" 3000 PSI CONCRETE PAVEMENT
W/ #3 BARS @ 18" O.C.E.W. AND
MIN OF 6± 1.5% AIR ENTRAINED
- 6" 3500 PSI CONCRETE PAVEMENT
W/ #3 BARS @ 18" O.C.E.W. AND
MIN OF 6± 1.5% AIR ENTRAINED
- EXIST CONCRETE PAVEMENT
TO REMAIN

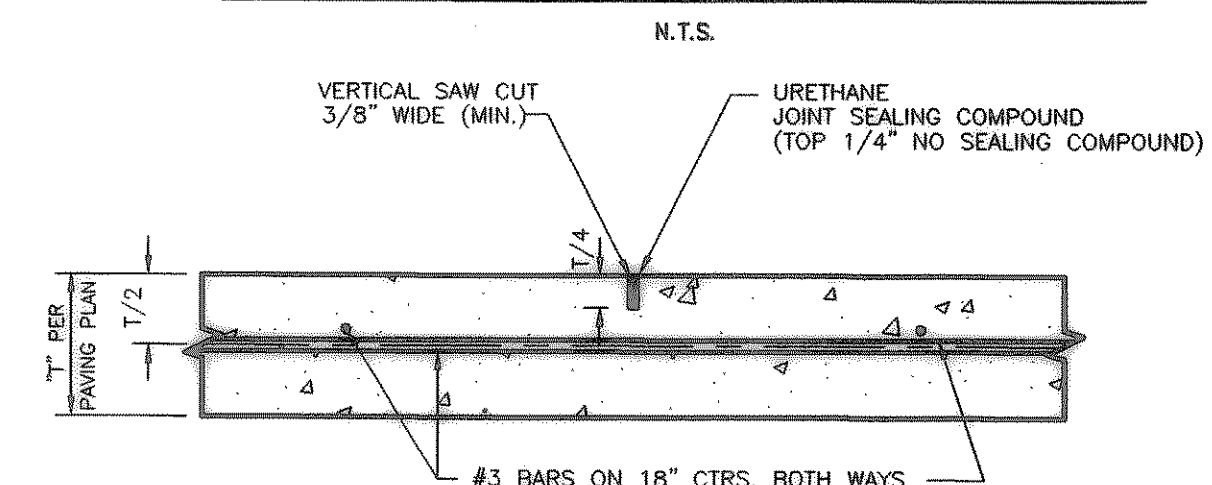
- ① EXIST LIGHT STD TO BE RELOCATED
- ② REMOVE EXIST TREE. SEE LANDSCAPE
- ③ MATCH EXIST. CURB
- ④ EXIST SIGHT TO BE REMOVED.
- ⑤ H.C. RAMPS TO BE COLOR CONDITIONED
PER CITY SPECIFICATIONS. USE QUARRY RED
(MANUFACTURED BY L.M. SCOFIELD COMPANY
800-800-9900)
- ⑥ EXIST. H.C. RAMPS ARE CURRENTLY GROOVED
AND PAINTED SLOPE IS LESS THAN 1:12



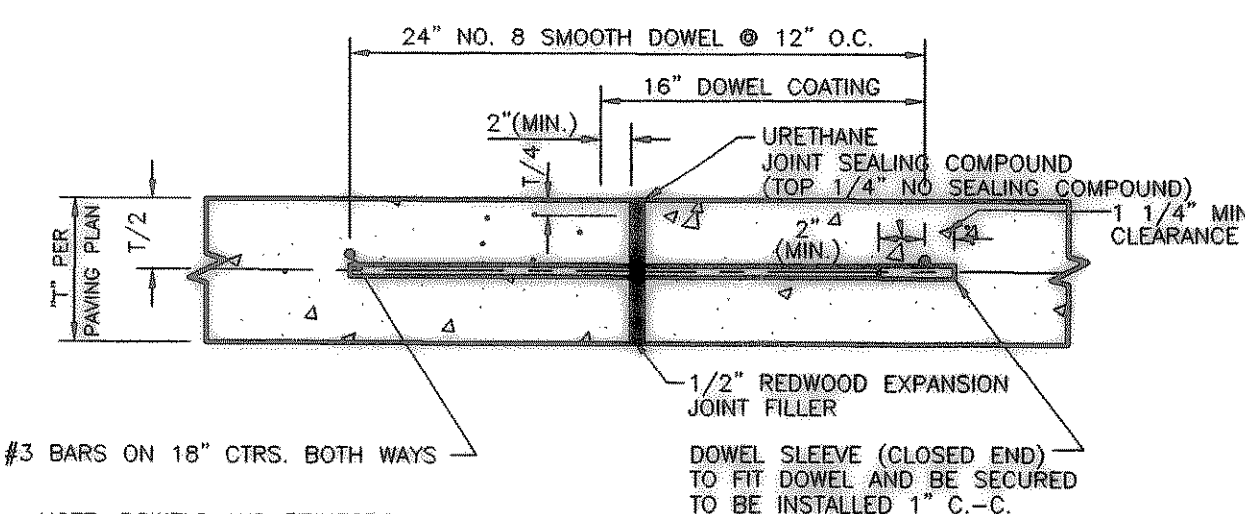
- NOTES:
- NO. 5 SMOOTH DOWEL BAR MAY BE USED IN 5 INCH AND 6 INCH PAVEMENT THICKNESS.
 - LONGITUDINAL BUTT CONSTRUCTION MAY BE UTILIZED IN PLACE OF LONGITUDINAL HINGED (KEYWAY) JOINT AT CONTRACTORS OPTION.
 - DOWEL BARS SHALL BE DRILLED INTO PAVEMENT HORIZONTALLY BY USE OF A MECHANICAL RIG.

DRILLING BY HAND IS NOT ACCEPTABLE. PUSHING DOWEL BARS INTO GREEN CONCRETE NOT ACCEPTABLE.

LONGITUDINAL BUTT JOINT DETAIL

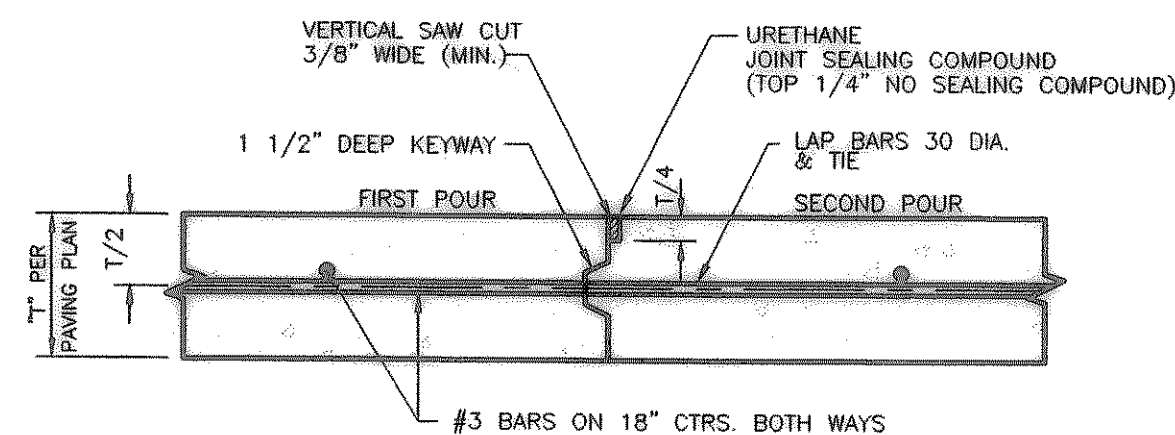


CONTRACTION JOINT DETAIL



NOTE: DOWELS AND REINFORCING BARS SHALL BE SUPPORTED BY AN APPROVED DEVICE

EXPANSION JOINT DETAIL



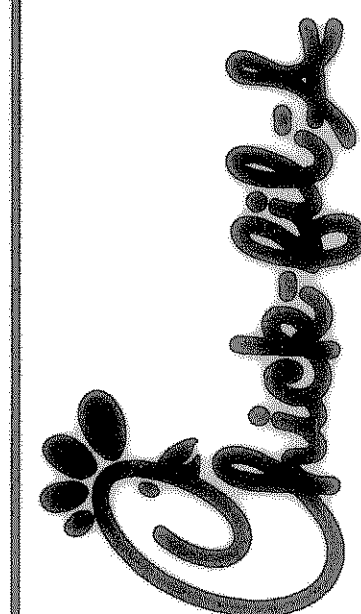
KEYED CONSTRUCTION JOINT DETAIL

N.T.S.

PAVING NOTES:

- ALL CONSTRUCTION SHALL BE IN ACCORDANCE WITH THESE PLANS AND THE CITY STANDARDS AND SPECIFICATIONS.
- ALL MATERIALS AND WORKMANSHIP SHALL CONFORM TO THE STANDARD AND SPECIFICATIONS FOR PUBLIC WORKS CONSTRUCTION FOR NORTH TEXAS. LATEST EDITION, AND ANY SPECIAL PROVISION AS APPROVED BY THE CITY.
- PRIOR TO CONSTRUCTION, THE CONTRACTOR SHALL MAKE CERTAIN THAT ALL REQUIRED PERMITS AND APPROVALS HAVE BEEN OBTAINED. NO CONSTRUCTION OR FABRICATION SHALL BEGIN UNTIL THE CONTRACTOR HAS RECEIVED AND THOROUGHLY REVIEWED ALL PLANS AND DOCUMENTS APPROVED BY THE PERMITTING AGENCIES.
- DURING THE CONSTRUCTION OF THESE IMPROVEMENTS, ANY INTERPRETATION OF THE STANDARD SPECIFICATIONS FOR THE PUBLIC WORKS CONSTRUCTION AND ANY MATTER WHICH REQUIRES THE APPROVAL OF THE OWNER MUST BE APPROVED BY THE CITY ENGINEER OR HIS DESIGNEE BEFORE ANY CONSTRUCTION INVOLVING DECISION COMMENCES. ASSUMPTIONS ABOUT WHAT THESE DECISIONS MIGHT BE WHICH ARE MADE DURING THE BIDDING PHASE WILL HAVE NO BEARING ON THE DECISION.
- THE SUBGRADE BENEATH PAVEMENT SHALL BE 8" THICK AND UNIFORMLY COMPACTED TO A MINIMUM OF 95% OF ASTM D698 NEAR -1% TO +3%, THE OPTIMUM MOISTURE CONTENT. REFER TO GEOTECHNICAL REPORT BY HBC ENGINEERING, INC. DATED AUGUST, 2000 REPORT NO. 94005549
- BARRIER FREE RAMPS SHALL BE CONSTRUCTED AT ALL STREET INTERSECTIONS AND DRIVEWAY APPROACHES.
- REFER TO SITE DETAILS FOR DETAILS OF CURB & SIDEWALK, ETC.

Series 97-100
5200 Buffington Road
Atlanta, Georgia 30349-2998
Telephone 404-765-8000



Project Date: September 18, 2000 LOT 8, BLOCK A
STEGER TOWNE CROSSING, PHASE I
ROCKWALL, TEXAS

Date Revision
Δ 11/01/00 CHICK-FIL-A, CITY & A.D.A. COMMENTS

Sheet Title PAVING PLAN

C4

Bury+Partners
Consulting Engineers and Surveyors
Dallas, Texas Tel 972/991-0011 Fax 972/991-0278
© Copyright 2000 Bury & Partners-DFW Inc.

Drawn By: JNM Project No. 30093-43 File: F:\3093-43\08343PVA.DWG