



**HONDA OF ROCKWALL ADDITION
LOT 1, BLOCK 1
ROCKWALL, TEXAS
PAVING PLAN**

Revisions	Date
1	01/23/2009
2	
3	
4	
5	
6	
7	
8	
9	

Issue Dates:

Addendum 4 - Nov. 12, 2012

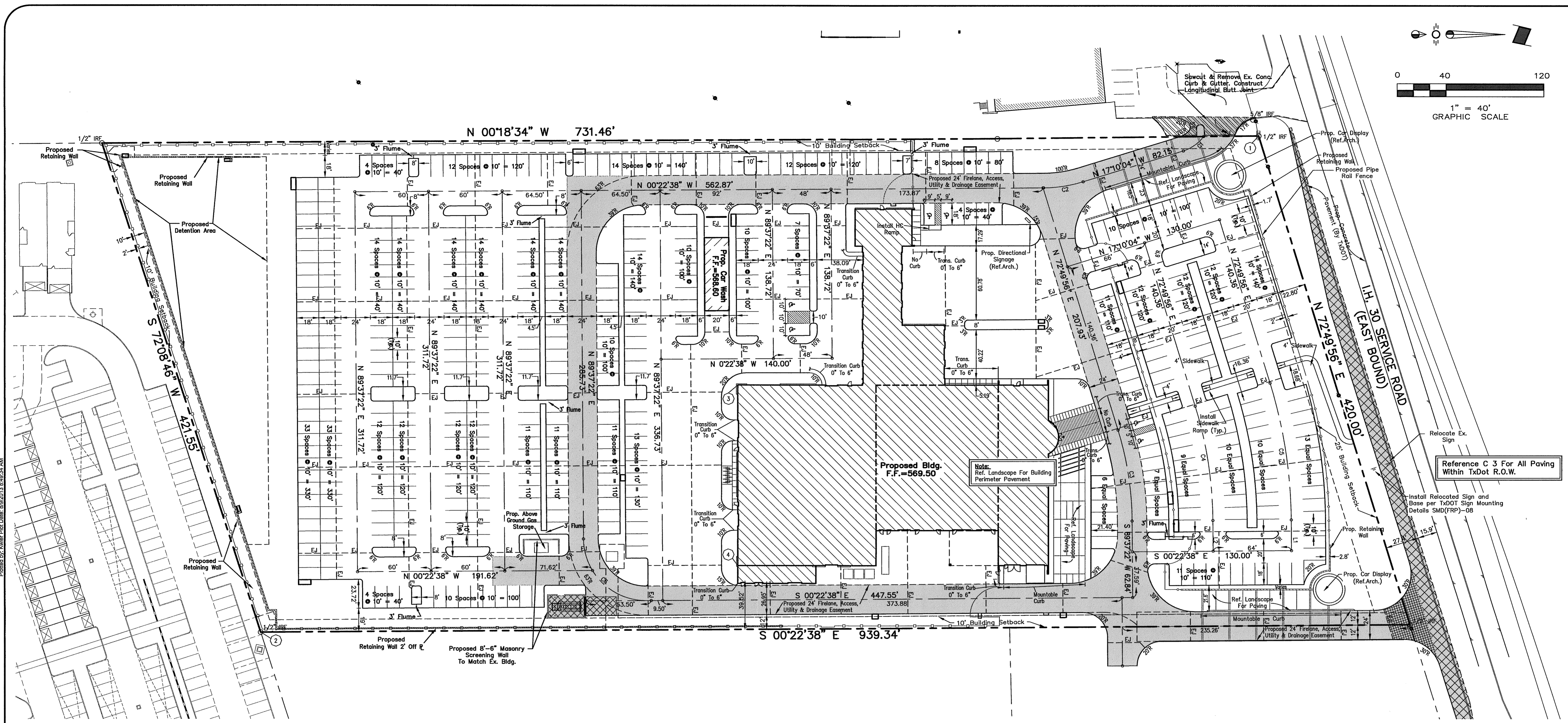
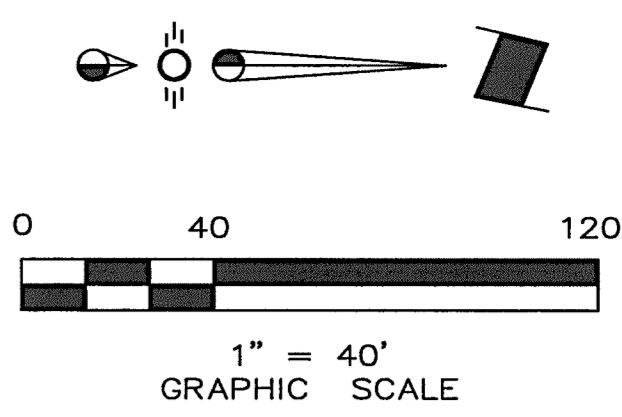
Scale: 1" = 40'

Drawn By: AO

Checked by: KSW

Sheet
C 2
12

SEI No. 11-112
11-112-PAV



PAVING GENERAL NOTES

- All materials and construction shall conform to the City of Rockwall Standard Construction Details and Specifications and NCTCOG 3rd Edition.
- It shall be the responsibility of the Contractor to protect all public utilities in the construction of this project. All manholes, cleanouts, valve boxes, fire hydrants, etc. must be adjusted to proper line and grade by the Contractor prior to and after the placing of permanent paving. Utilities must be maintained to proper line and grade during construction of this project.
- The Contractor shall be responsible for coordinating with all the appropriate utility companies for the location of all utilities within the construction area.
- The Paving Contractor shall not place permanent pavement until all sleeving for irrigation, electric, gas, telephone, cable TV, site lighting, etc. has been installed. It shall be the Paving Contractor's responsibility to insure that all sleeving is in place prior to placing permanent paving.
- All paving and earthwork operations shall conform to the recommendations in the Geotechnical Investigation (Report No. 07-13278) and the City of Rockwall Standard Construction Details.
- All dimensions are to face of curb or edge of building unless otherwise noted.
- All curb return radii are 2' unless otherwise noted.
- Standard Parking spaces are 10'x20' or 10'x18' with 2' overhang.
- All dimensions are perpendicular to the drive centerlines and/or property lines.
- Firelanes shall be constructed in accordance with the City of Rockwall Engineering Standards.
- Firelanes shall be marked "NO PARKING FIRE LANE" every 25 feet with white 4-inch letters on a 6-inch red striped background.
- Gates crossing a firelane shall require a permit from the fire department.
- Refer to Architectural Plans for exact building and related sidewalk dimensions.
- 3,600 PSI paving design is minimum 6 sack for machine placed and minimum 6.5 sack for hand placed.

LEGEND

- EJ --- Expansion Joint
- [Symbol] 4" 3,600 PSI Concrete Pavement Reinforced w/ #3 @ 18" O.C.E.W.
- [Symbol] 6" 3,600 PSI Concrete Pavement Reinforced w/ #3 @ 18" O.C.E.W.
- [Symbol] 7" 3,600 PSI Concrete Pavement Reinforced w/ #3 @ 18" O.C.E.W.
- [Symbol] 10" 3,600 PSI Concrete Pavement Reinforced w/ #3 @ 18" O.C.E.W.
- [Symbol] 12" 3,600 PSI Concrete Pavement Reinforced w/ #3 @ 18" O.C.E.W.
- [Symbol] Remove Ex. Pavement

COORDINATE TABLE

No.	NORTHING	EASTING
1	7021988.5030	2601780.4280
2	7021953.1553	2602167.8989
3	7021942.89	2601964.80
4	7021542.69	2602112.97

Centerline Table		
Line	Length	Bearing
L1	25.25	S 89°37'22" W
L2	25.25	S 89°37'22" W

Centerline Curve Table					
Curve	Radius	Length	Delta	Tangent	Chord
C1	32.00	20.58	36°51'8"	10.66	20.23
C2	112.00	32.82	16°47'26"	16.53	32.70
C3	259.00	75.90	16°47'26"	38.22	75.63
C4	325.00	95.24	16°47'26"	47.96	94.90
C5	389.00	114.00	16°47'26"	57.41	113.59
C6	51.00	80.11	90°0'0"	51.00	72.12

RECORD DRAWINGS

NOTE:
To the best of our knowledge Spars Engineering, Inc. hereby states that this plan is a Record Drawing. The information provided is based on field surveying at the site and information provided by the contractor.

BENCHMARK:
TOP OF RM OF A SANITARY SINKER MANHOLE LOCATED SOUTH 01°25'39" WEST, A DISTANCE OF 1,705.71 FEET FROM THE NORTH CORNER OF AN EXISTING BUILDING LOCATED AT THE SOUTH END OF CONCRETE DRIVEWAY.

BENCHMARK:
TOP OF RM OF A CONCRETE DRIVE WAY LOCATED SOUTH 07°04'40" WEST, A DISTANCE OF 35.19 FEET FROM THE NORTHEAST CORNER OF CONCRETE DRIVEWAY AND NORTH 04°59'13" EAST, A DISTANCE OF 130.54' FEET FROM THE CORNER OF AN EXISTING BUILDING LOCATED AT THE SOUTH END OF CONCRETE DRIVEWAY.

Drawn by: KSW Date: 8/20/2013 8:48:34 AM
 Checked by: KSW Date: 8/20/2013 8:48:34 AM
 Plotted by: KSW Date: 8/20/2013 8:48:34 AM
 Printed by: KSW Date: 8/20/2013 8:48:34 AM