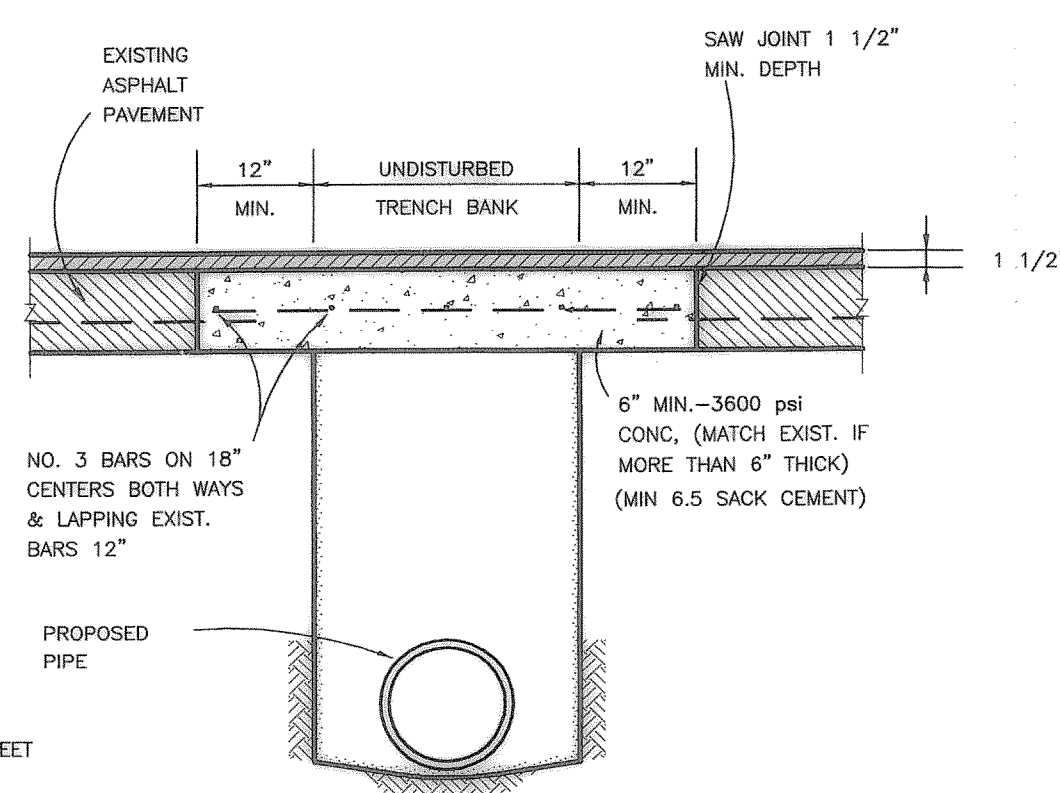
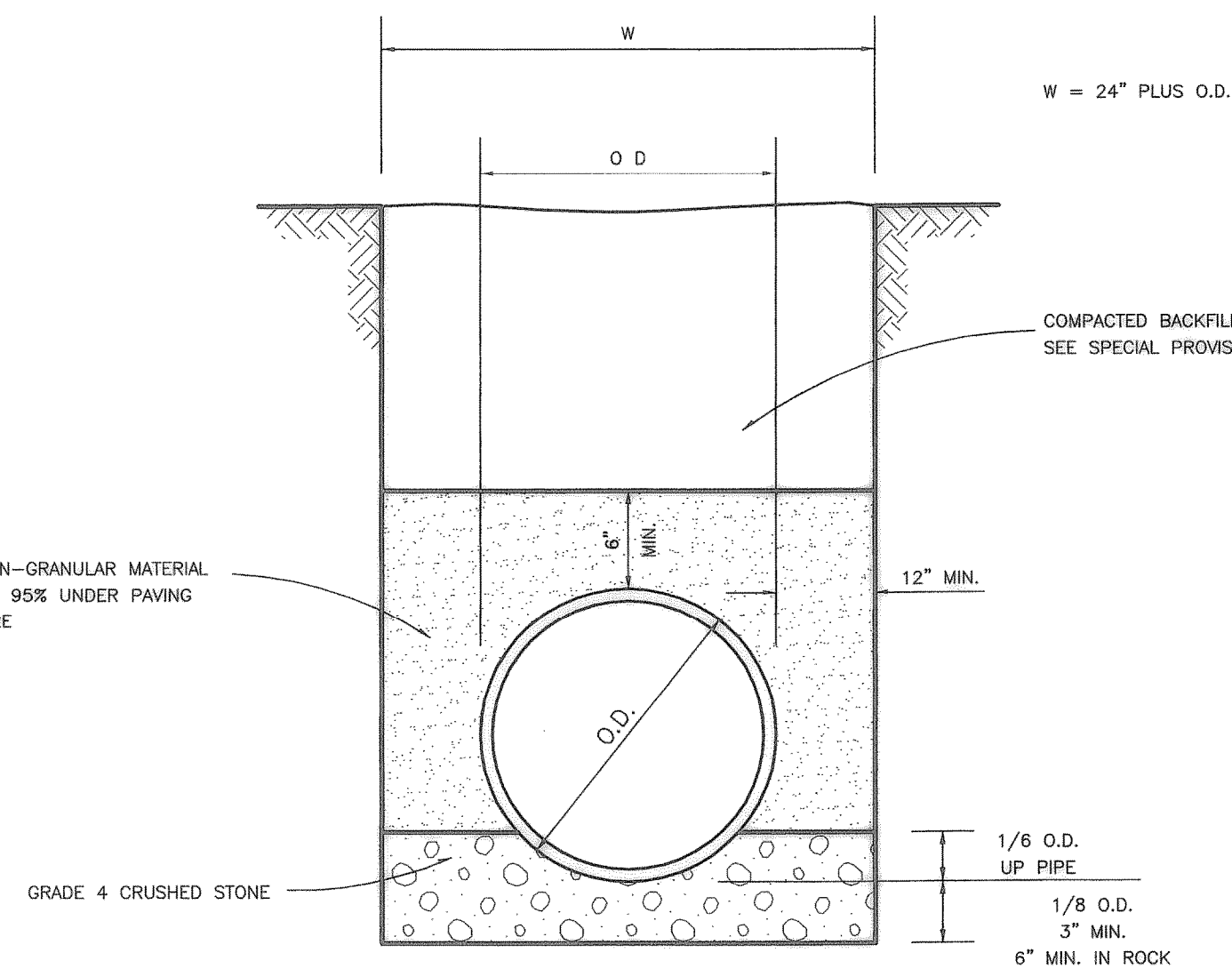


SEE EMBEDMENT FOR TYPE OF PIPE  
**CONCRETE STREET OR DRIVEWAY REPAIR**  
N.T.S.

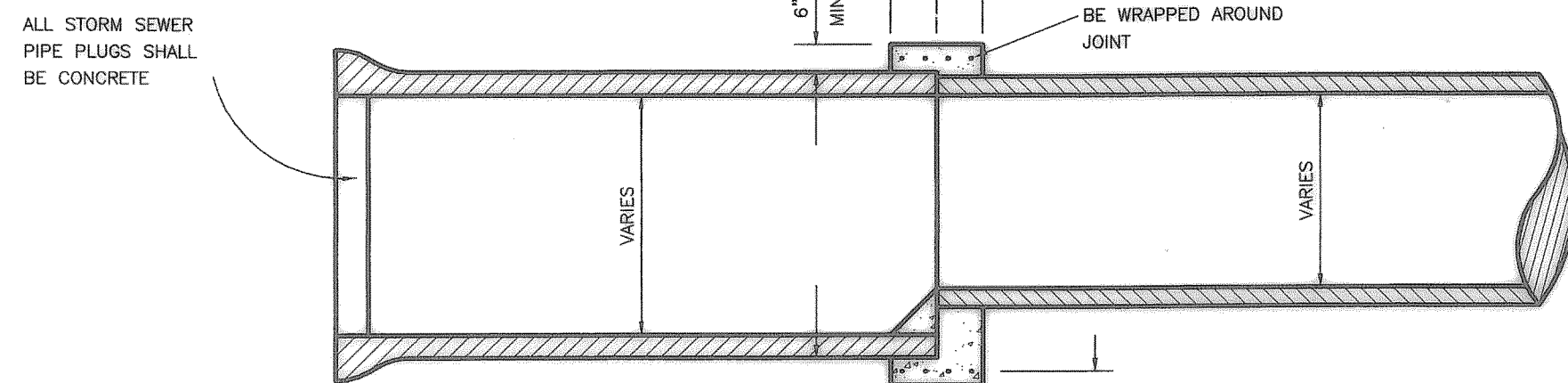


SEE EMBEDMENT FOR TYPE OF PIPE  
**ASPHALT STREET OR DRIVEWAY REPAIR**  
N.T.S.



**STORM SEWER PIPE BEDDING**  
N.T.S.

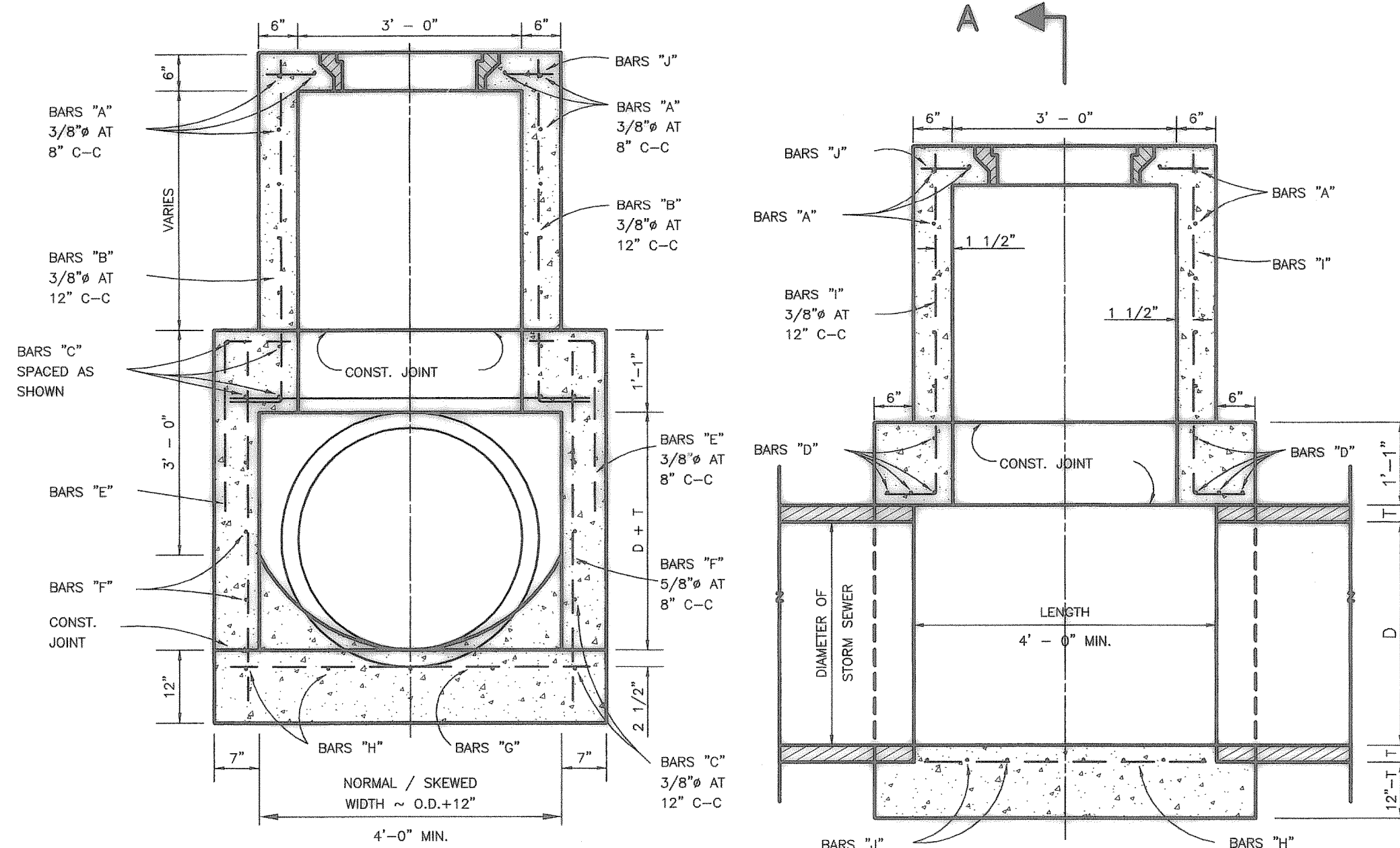
NOTE:  
DEPTH OF TRENCH BELOW PIPE  
3" MIN. FOR 27" PIPE & SMALLER  
4" MIN. FOR 30" TO 60" PIPE  
6" MIN. FOR 66" PIPE & LARGER



**DETAIL OF CONCRETE COLLAR FOR PIPE CONNECTIONS**  
N.T.S.

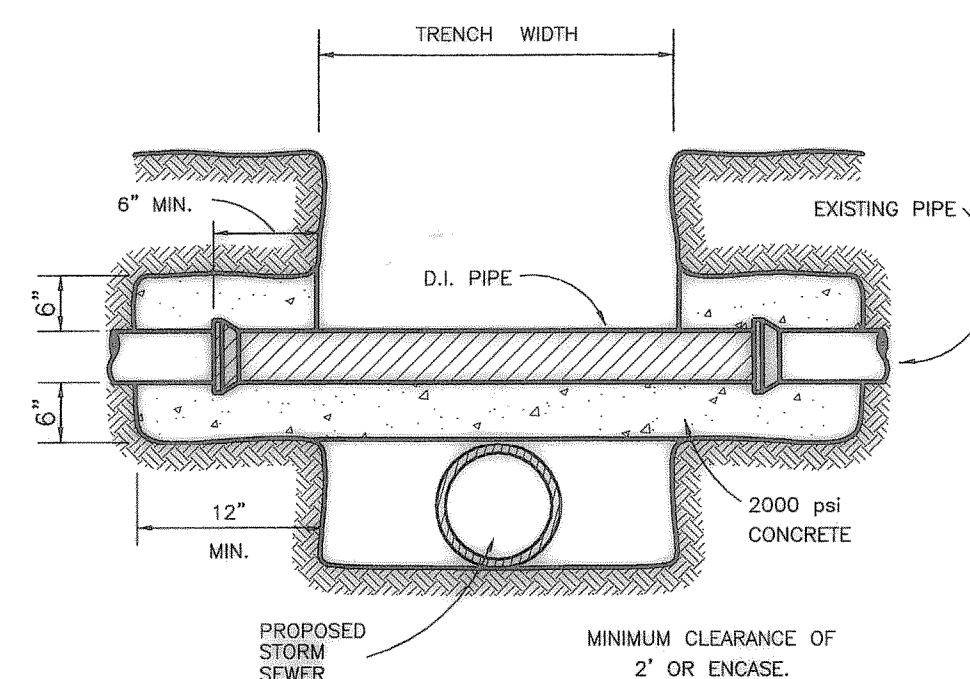
**GENERAL NOTES:**

1. IN GENERAL, REINFORCING STEEL SHALL BE #4 BARS ON 12" CENTERS BOTH WAYS FOR GUTTER, BOTTOM SLAB ENDS, FRONT AND BACK WALLS, AND #4 BARS ON 6" CENTERS BOTH WAYS FOR TOP SLAB. AN ADDITIONAL #6 BAR SHALL BE PLACED IN THE FRONT EDGE OF THE TOP SLAB IN THE INLETS AND ADDITIONAL REINFORCING STEEL SHALL BE PLACED AROUND MANHOLES AS SHOWN.
2. ALL REINFORCING STEEL SHALL BE OPEN HEARTH NEW BILLET STEEL OF INTERMEDIATE OR HARD GRADE CONFORMING TO ASTM-615. DEFORMATIONS SHALL CONFORM TO ASTM-615.
3. MANHOLE STEPS, SPACED 14" APART AND LOCATED AS DIRECTED BY THE ENGINEER, SHALL BE PROVIDED ON ALL INLETS WHERE THE DEPTH EXCEEDS 5'-0".
4. ALL REINFORCING STEEL SHALL HAVE A MINIMUM COVER OF 2" TO THE CENTERS OF THE BARS.
5. 10'-0" OF EXIST. CURB AND GUTTER UPSTREAM AND 10'-0" OF EXIST. CURB AND GUTTER DOWNSTREAM SHALL REMOVED AND REPOURED INTEGRALLY WITH EACH INLET. THIS WORK SHALL NOT BE PAID FOR DIRECTLY BUT SHALL BE CONSIDERED SUBSIDIARY TO THE UNIT PRICE BID FOR THE VARIOUS INLETS.
6. ALL BACKFILLING SHALL BE PERFORMED BY MECHANICAL TAMPING. THE TOP 1'-0" OF BACKFILL IN ANY SURFACED STREET SHALL BE ROAD GRAVEL. THIS GRAVEL WILL NOT BE PAID FOR DIRECTLY BUT SHALL BE CONSIDERED SUBSIDIARY TO THE UNIT PRICE FOR THE VARIOUS INLETS.

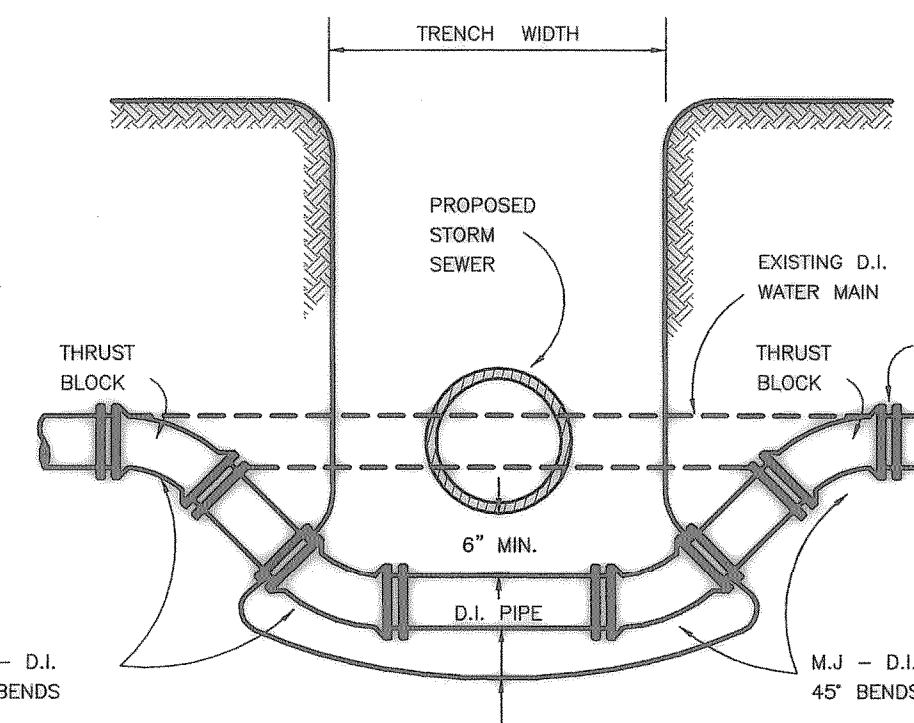


**SECTION A-A**  
N.T.S.

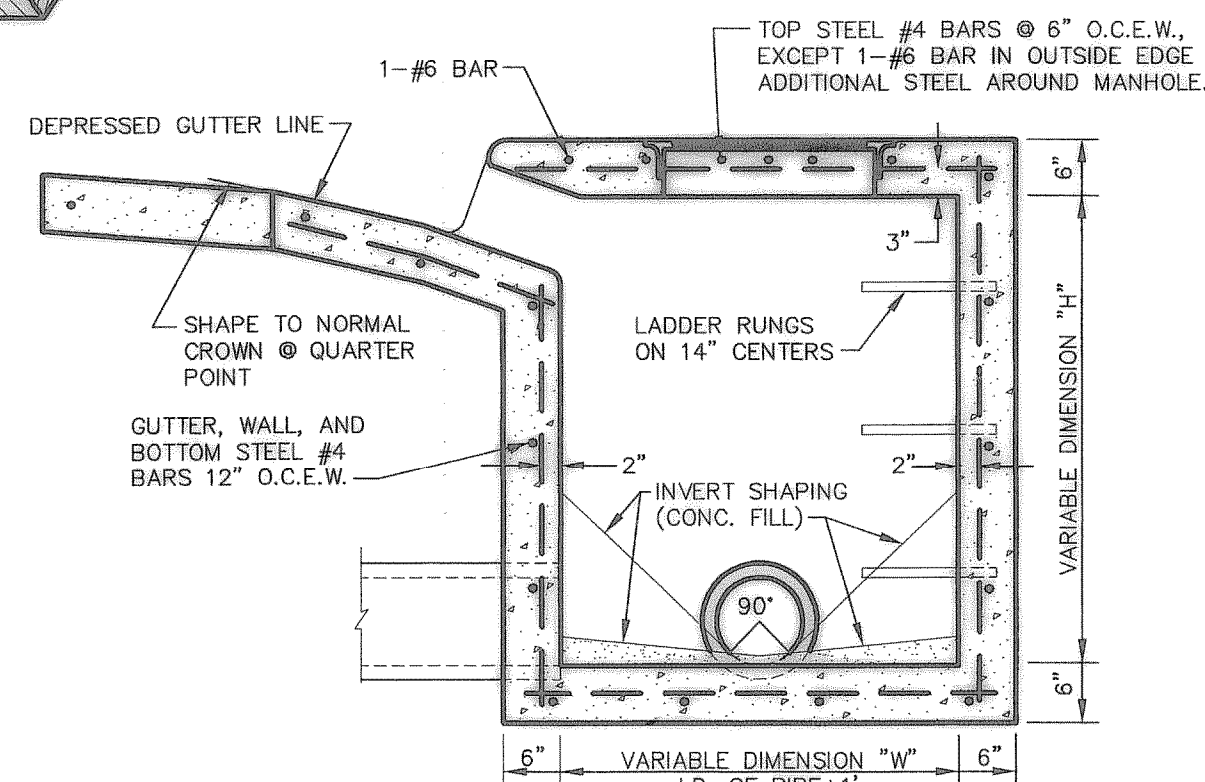
**STORM SEWER MANHOLE TYPE "B"**



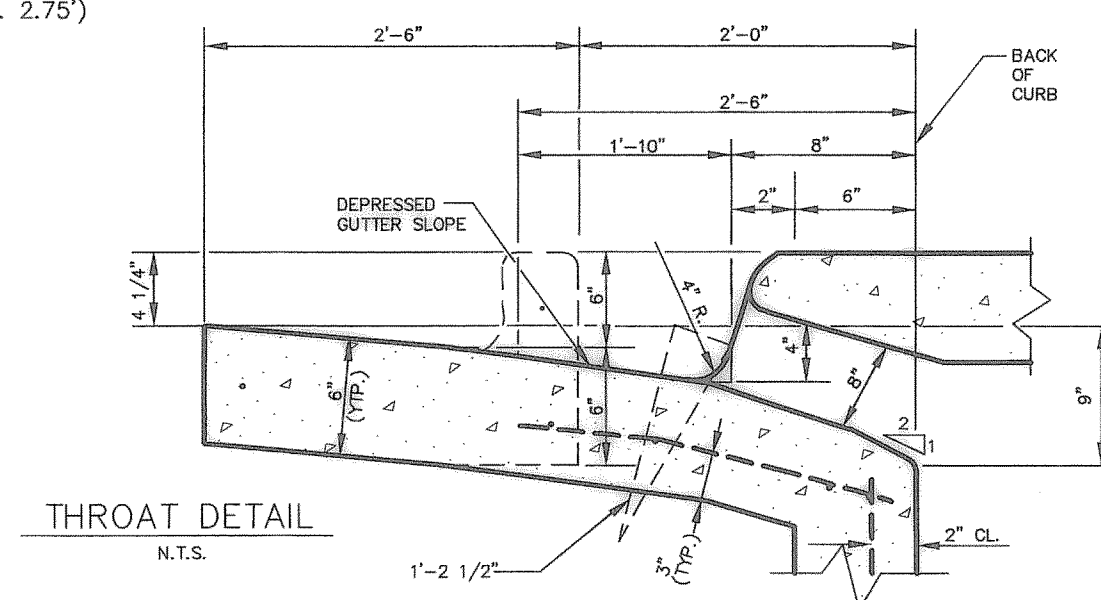
**DETAIL OF UTILITY SUPPORT**  
N.T.S.



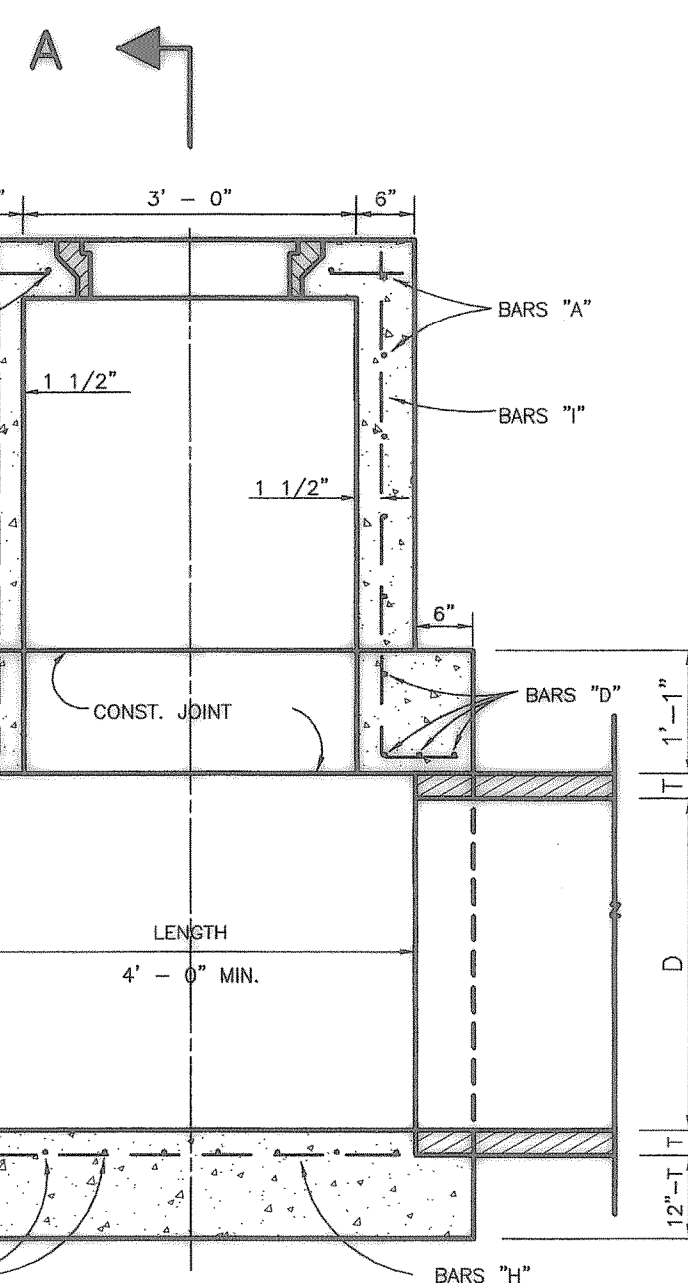
**DETAIL FOR WATER MAIN LOWERING**  
N.T.S.



**SECTION A-A**  
N.T.S.

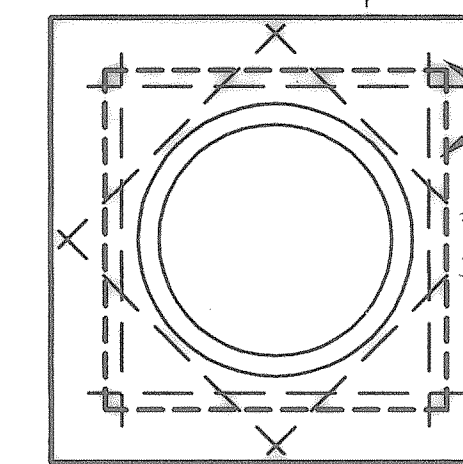


**THROAT DETAIL**  
N.T.S.

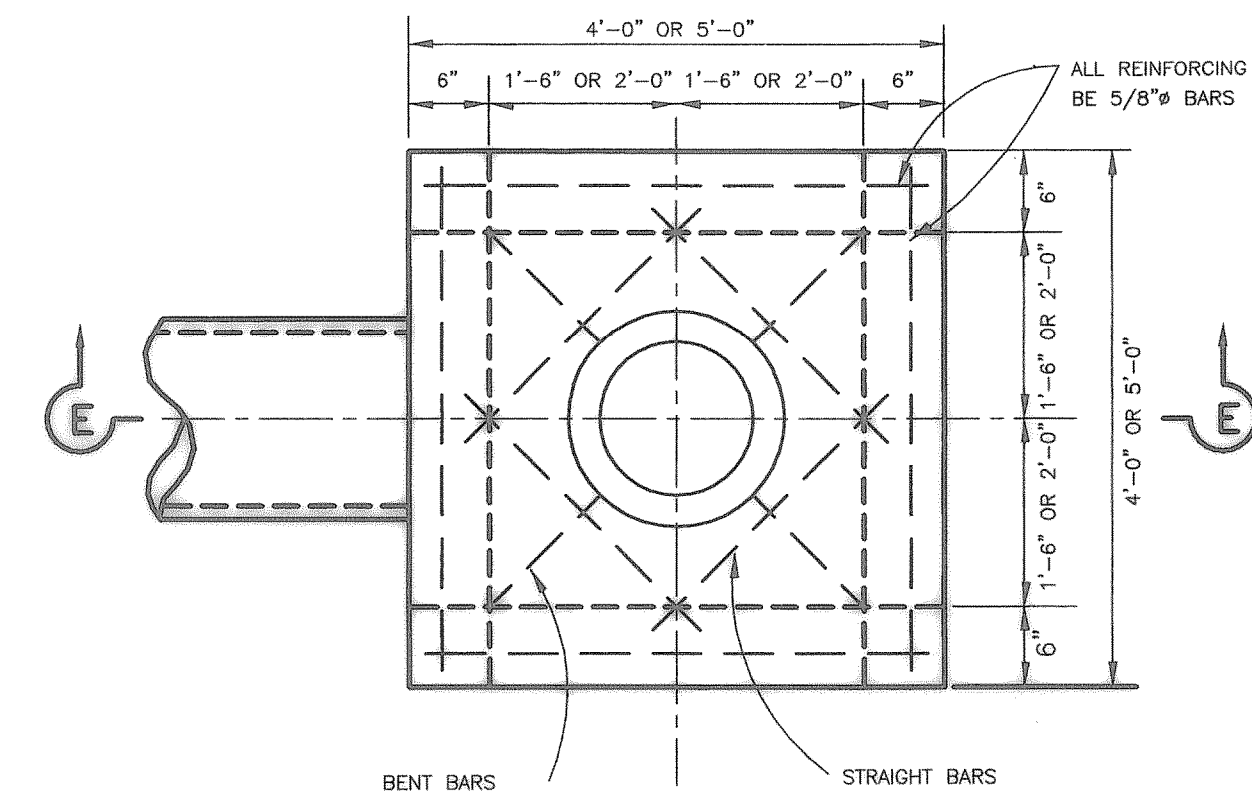


**ELEVATION**  
N.T.S.

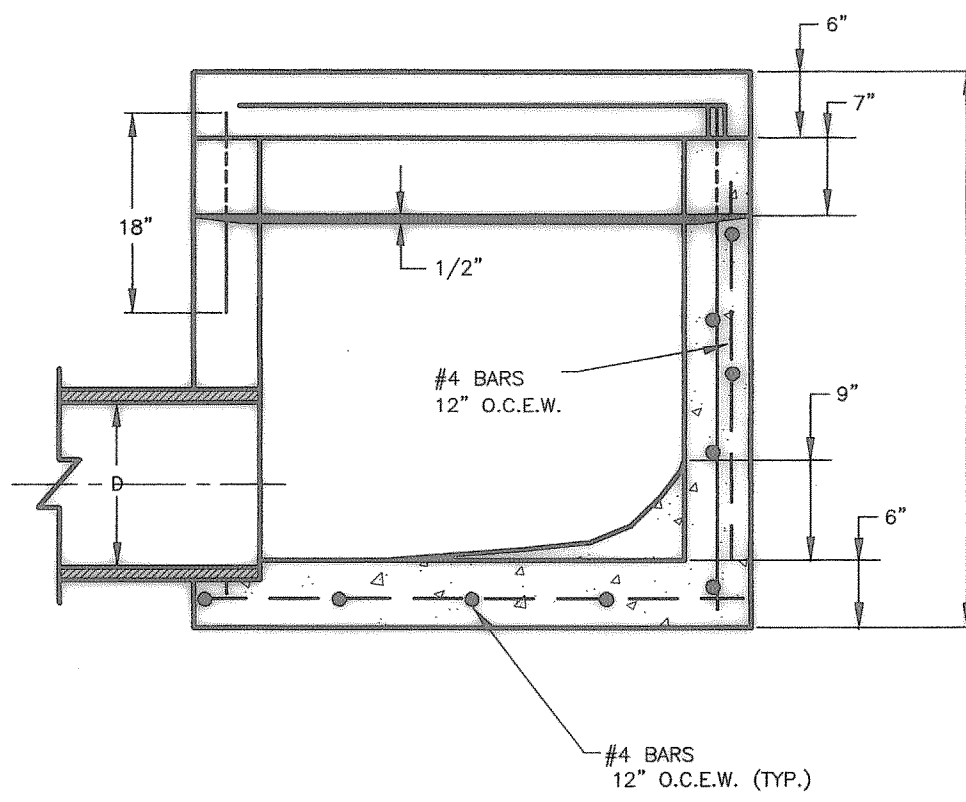
PROVIDE 3/4" PREMOULDED EXPANSION JOINT BETWEEN MANHOLE AND CONCRETE PAVEMENT AND SEAL WITH HOT POURED RUBBER.



**TOP PLAN**  
**TYPE A & TYPE B**  
**STORM SEWER MANHOLE**  
NOTE: MAXIMUM PIPE SIZE TO BE USED 75" N.T.S.

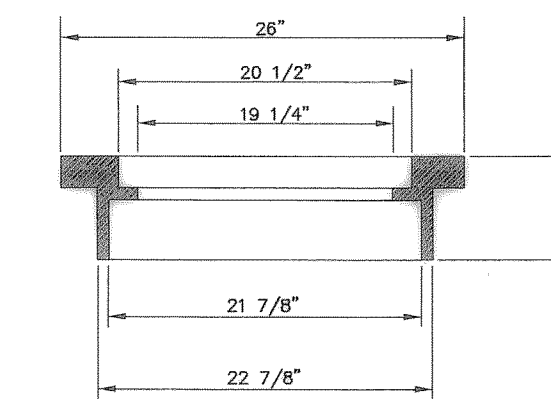


**PLAN**

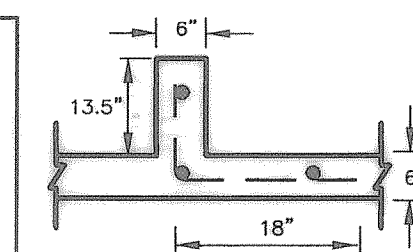


**SECTION E-E**  
**STANDARD DROP INLET**  
N.T.S.

NOTE:  
STRUCTURES TO BE 4200 psi (6.5 SACK MIN)  
NO FLY ASH



**MANHOLE DETAIL**



**ENERGY DISSIPATER DETAIL**  
N.T.S.

**RECORD DRAWINGS AS PROVIDED BY: I.C.S. COMMERCIAL**  
*Michael S. Allen*  
**MICHAEL S. ALLEN, P.E.**  
DATE: 7/23/03