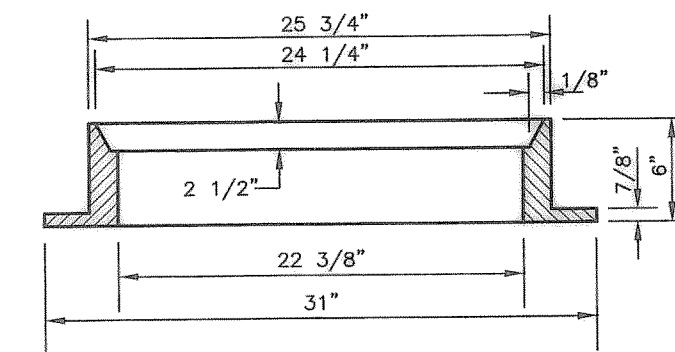
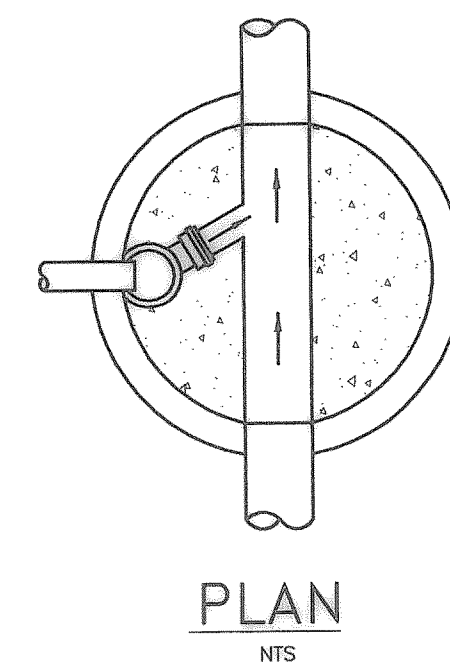
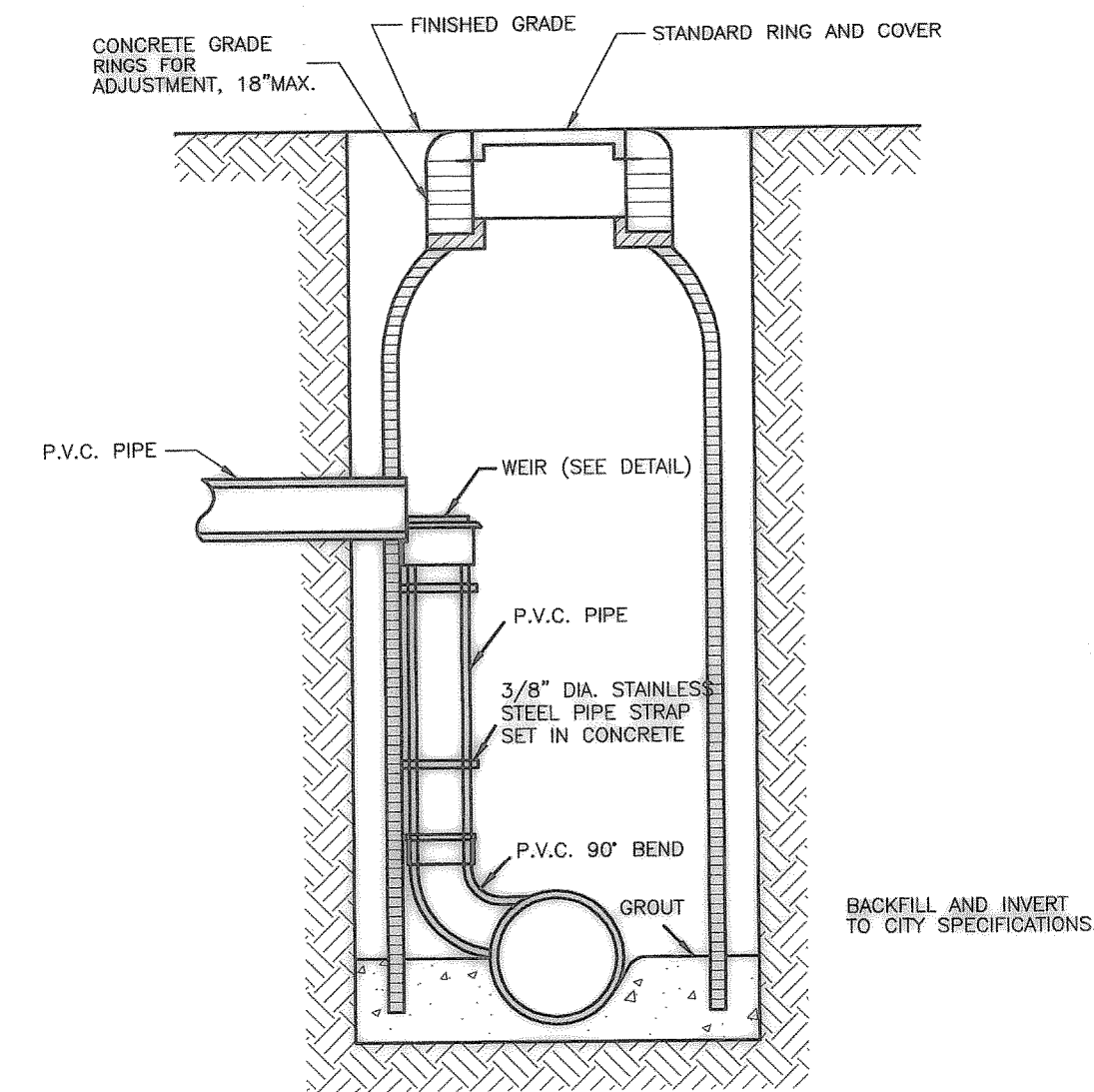


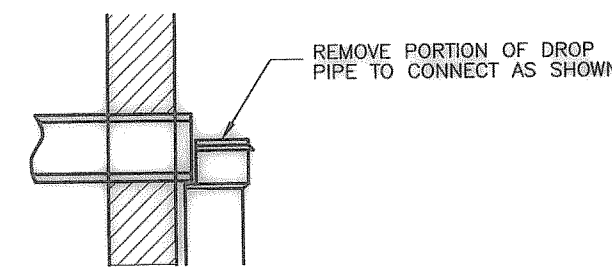
APPROXIMATE WEIGHT  
RING AND COVER: 400 LBS



### CAST IRON GRATE AND FRAME DETAIL

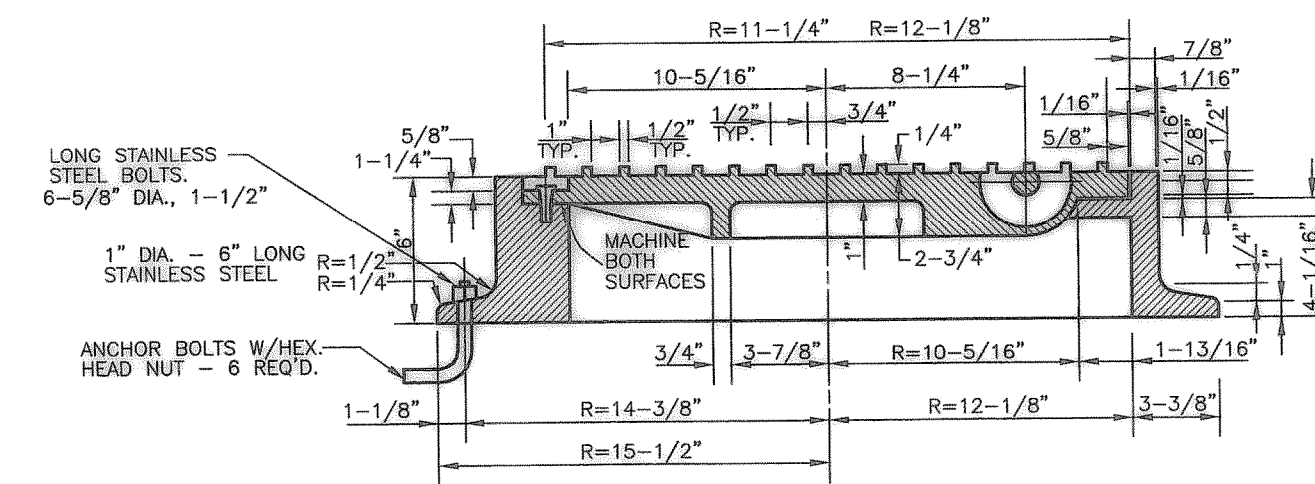
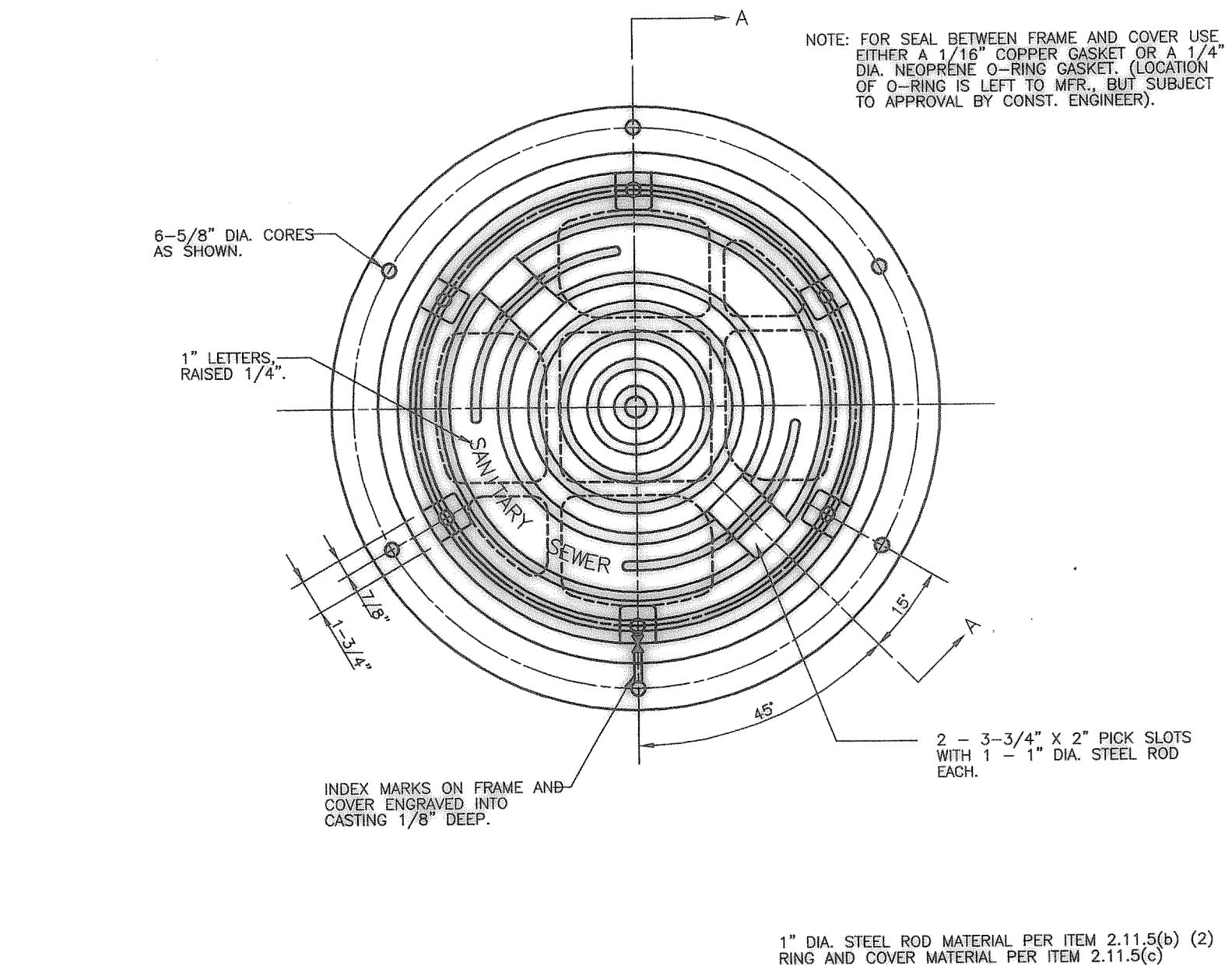


WEIR DETAIL  
NTS

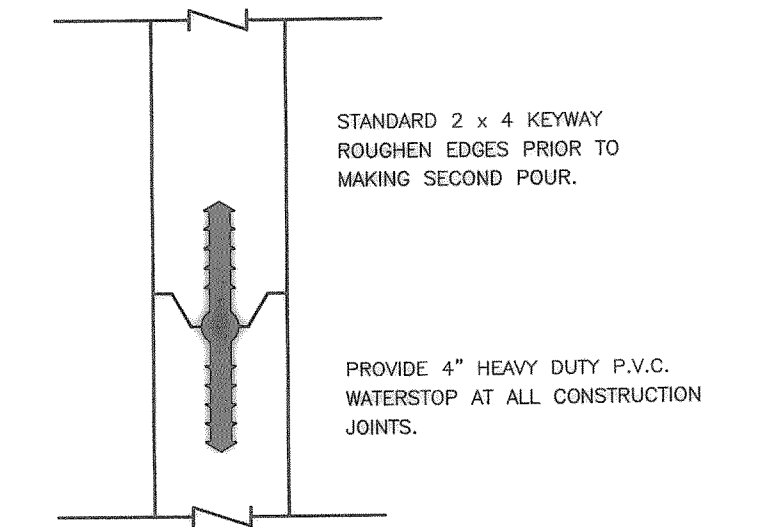


MANHOLE INSIDE DROP CONNECTION

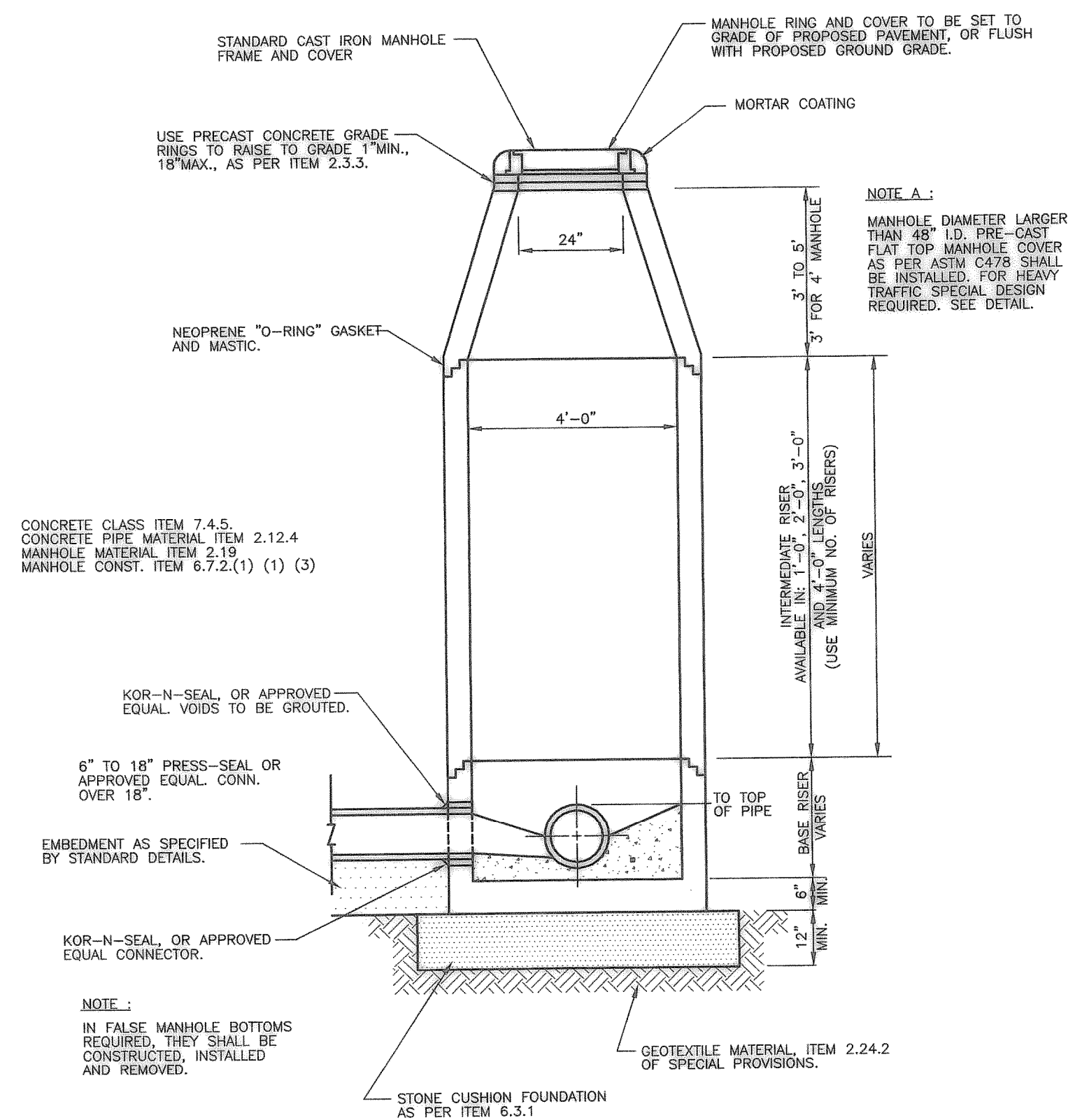
NOTE:  
ALL CONCRETE TO BE 4200 PSI  
6.5 SACK CEMENT NO FLY ASH



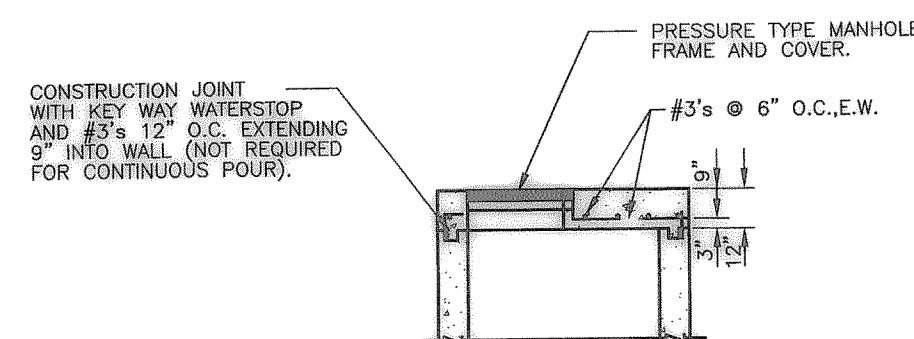
### PRESSURE TYPE MANHOLE FRAME AND COVER



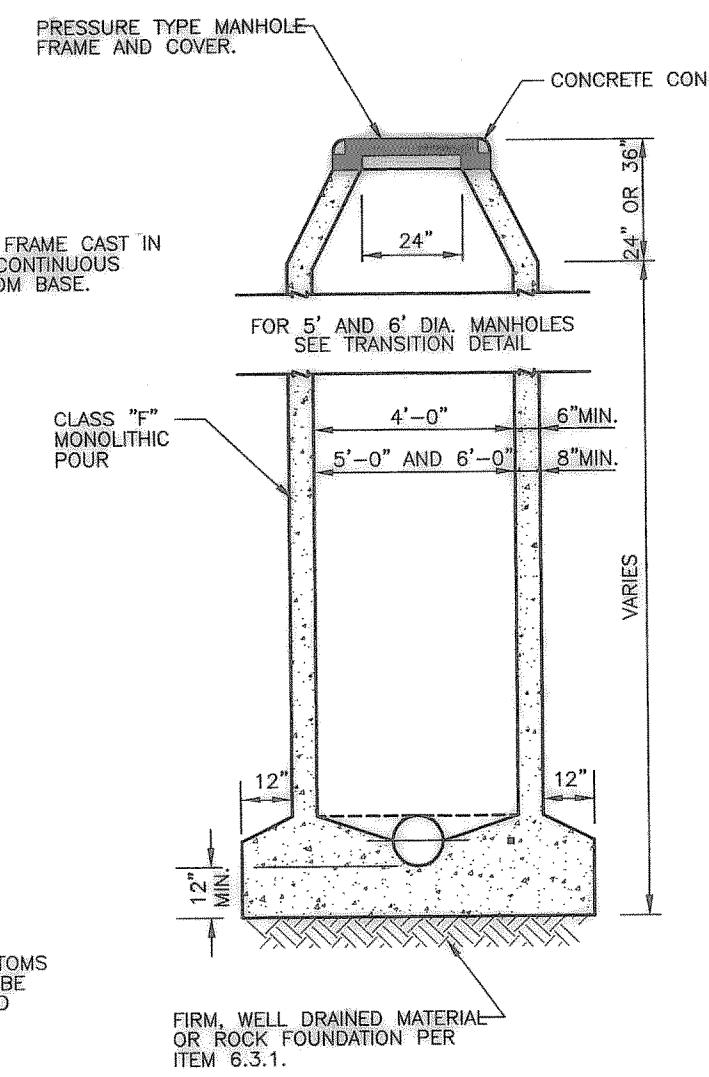
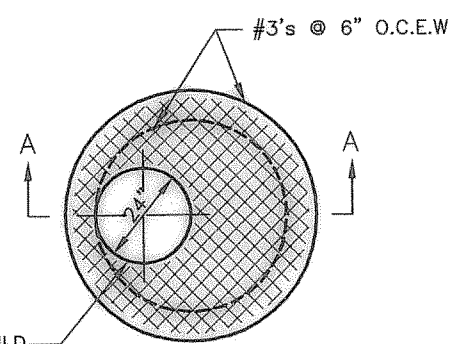
## KEYWAY WITH WATERSTOP



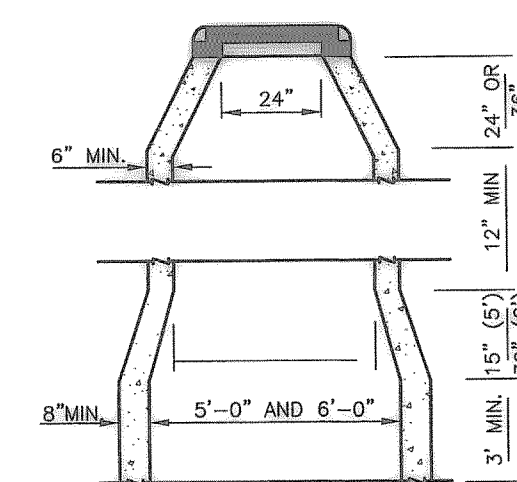
## PRECAST CONCRETE MANHOLE ALTERNATE "B"



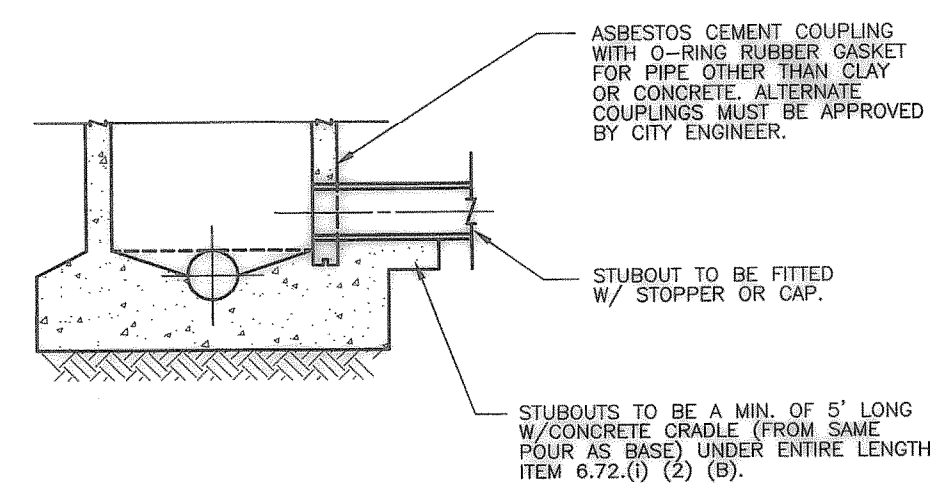
SECTION A-A




TYPE "S" MANHOLE  
(CAST IN PLACE)



TRANSITION DETAIL FOR 5' AND 6'



RECORD DRAWINGS  
AS PROVIDED BY:  
I.C.S. COMMERCIAL

  
MICHAEL S. ALLEN, P.E.  
DATE: 9/25/03