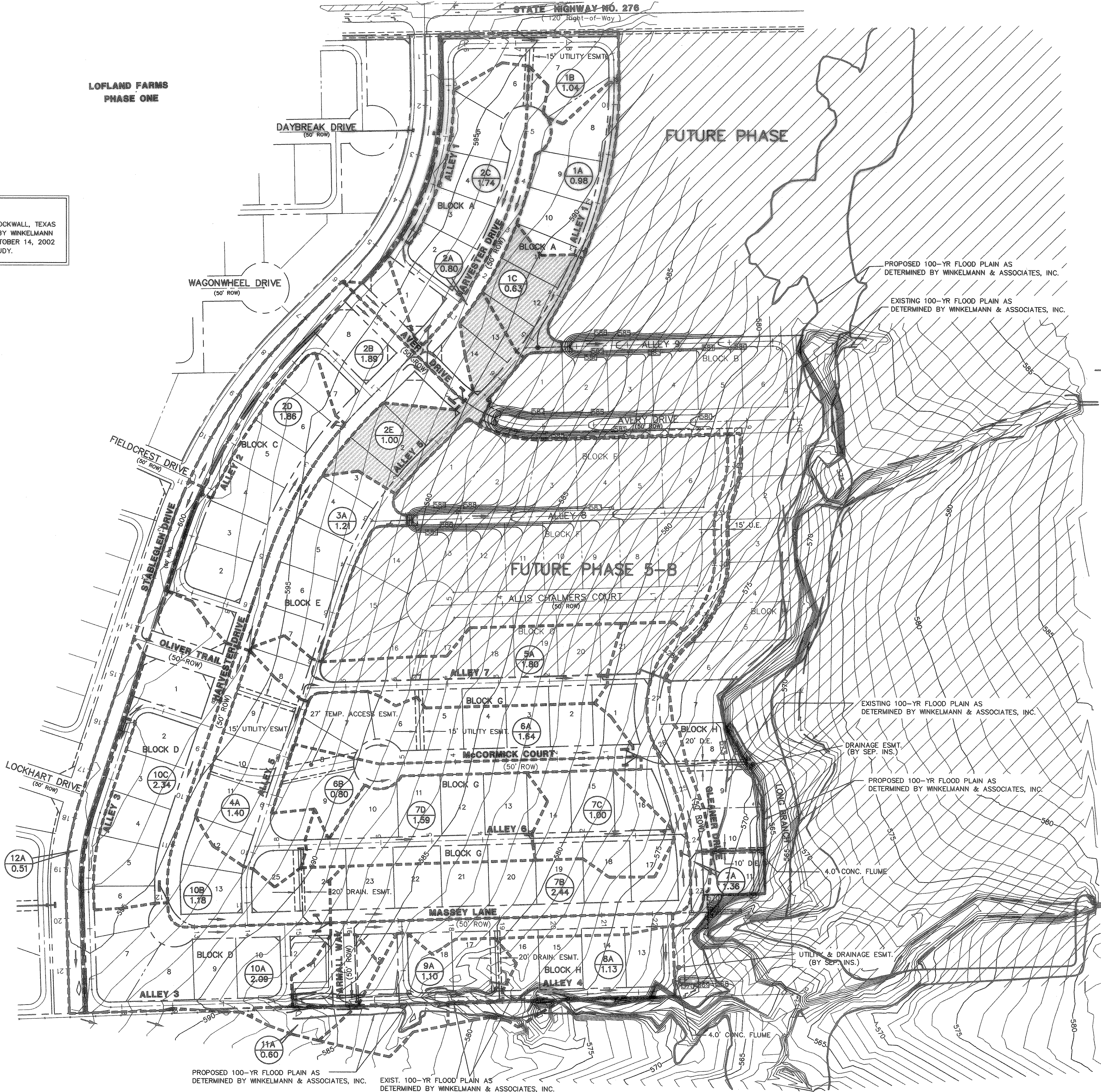
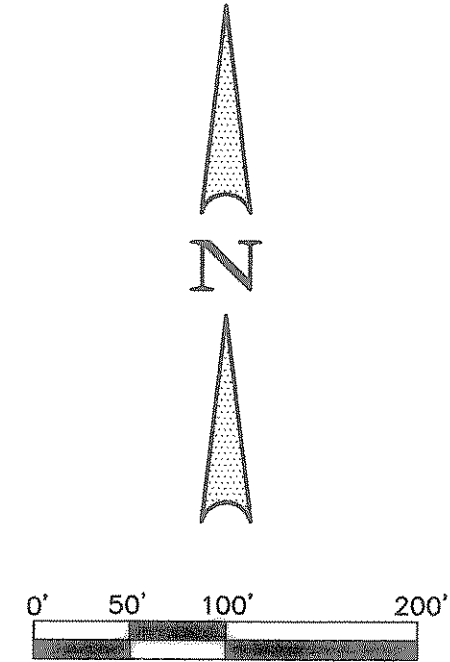


NOTE:  
REFER TO "LONG BRANCH - ROCKWALL, TEXAS  
FLOODPLAIN STUDY REPORTS" BY WINKELMANN  
& ASSOCIATES, INC. DATED OCTOBER 14, 2002  
FOR LONG BRANCH FLOOD STUDY.



- LEGEND**
- (A) AREA DESIGNATION
  - 0.45 AREA IN ACRES
  - FLOW ARROWS
  - PROPOSED INLETS
  - PROPOSED STORM SEWER SYSTEM
  - DRAINAGE AREA BOUNDARY
  - FUTURE INLETS
  - FUTURE STORM SEWER
  - 534 EXIST. CONTOURS
  - 533 PROP. CONTOURS
  - ▨ DRAINAGE TRIBUTARY TO BE HANDLED BY FUTURE STORM SEWER SYSTEM
  - ▨ FUTURE PHASE
  - PROP. 100-YR FLOOD PLAIN
  - EXIST. 100-YR FLOOD PLAIN



ASBUILT  
Winkelman & Associates, Inc. hereby states that this plan, to the best of our knowledge is "As Built". Modifications have been made as per information provided by the contractor. Winkelman & Associates, Inc. does not certify as to the correctness or quality of construction as no field inspection was performed.  
*Mr. Naim Uddin Khan*  
WINKELMANN & ASSOCIATES, INC. 5/14/04  
DATE

BENCHMARK: ELEV. = 600.69  
CITY OF ROCKWALL R-19  
BRASS MONUMENT AT THE N/W CORNER OF  
SILVERVIEW & DIAMOND WAY, 500' ± SOUTH OF  
S.H. 276.  
BENCHMARK: ELEV. = 583.56  
R.R. SPIKE SET IN THE CENTERLINE OF S.H. 276  
3600± WEST OF F.M. 549

THESE CONSTRUCTION PLANS WERE PREPARED  
UNDER THE RESPONSIBLE SUPERVISION OF  
MD. NAIM UDDIN KHAN, REGISTERED PROFESSIONAL  
ENGINEER NO. 87776  
Mr. Naim Uddin Khan 9/15/03

LOFLAND FARMS, PHASE 5A  
BAIRD SURVEY, ABSTRACT NO. 25  
CITY OF ROCKWALL,  
ROCKWALL COUNTY, TEXAS  
CONTINENTAL HOMES  
621 WEST COLLEGE STREET  
GRAPEVINE, TEXAS 76051

**DRAINAGE AREA MAP**  
**LOFLAND FARMS, PHASE 5-A**

Scale : 1"=100'  
Date : 04/01/03  
Designed By : GB  
Drawn By : GB  
Checked By : NK  
File : 320045ADAM.DWG  
Project No. : 32004-01

SHEET  
1  
OF  
35

APPROV. REVISION NO. DATE

**Winkelman & Associates, Inc.**  
CONSULTING CIVIL ENGINEERS & SURVEYORS  
6750 Hillcrest Plaza Drive, Suite 100  
Dallas, Texas 75230  
(972) 482-7900  
www.winkelman.com