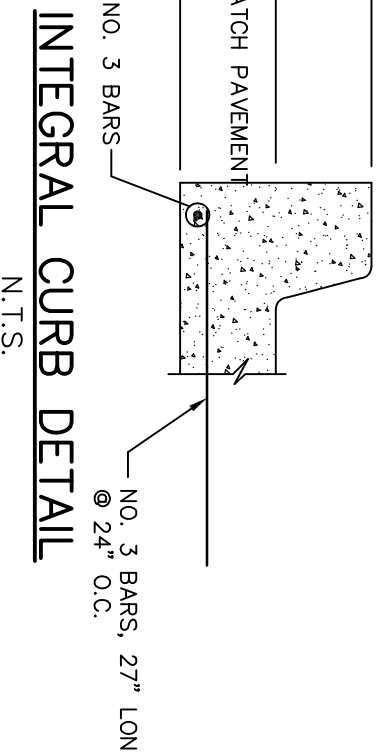


N.T.S

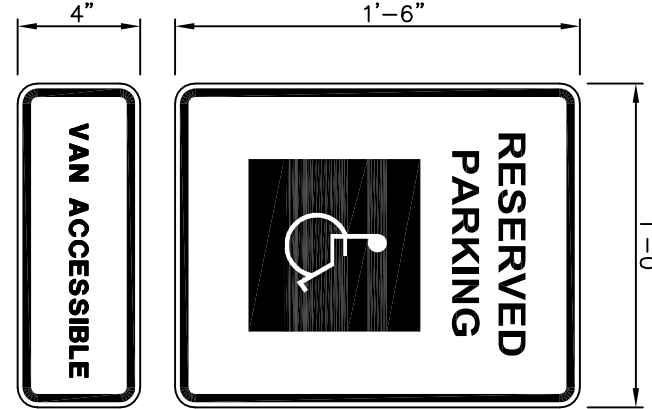


N.T.S.

N.T.S



N.T.S.



N.T.S.



N.T.S.

1. ALL ACCESSIBLE SPACES AND ACCESSIBLE ROUTES SHALL COMPLY WITH THE TEXAS ACCESSIBILITY STANDARDS (TAS) AND THE CITY REQUIREMENTS.

- (A) CHARACTERS AND SYMBOLS ON SUCH SIGNS SHALL BE LOCATED 60" (1525 MM)
 - (B) THE SURFACE OF ANY SIGN SHALL BE FLAT AND THE SURFACE SO THAT IT CANNOT BE OBSERVED BY A VEHICLE PARKED IN THE SPACE.
- 4.2. SPACES LOCATED WITHIN AN ACCESSIBLE ROUTE SHALL COMPLY WITH TAS SECTION

NOTES

1. PROVIDE IN ACCORDANCE WITH THE TEXAS ACCESSIBILITY STANDARDS (TAS) AND CITY STANDARDS
2. INSTALL WHERE HANDICAP STALLS ARE INDICATED ON PLAN
3. VAN ACCESSIBLE SIGNAGE ON VAN SPACES ONLY - SEE PLAN FOR LOCATION



1. MAXIMUM INSERTION ANGLE SHALL NOT EXCEED REQUIREMENTS AS SPECIFIED BY THE MANUFACTURER.
2. SEE STANDARD DETAILS STD-202 (A) THROUGH STD-204 (E) FOR STRUCTURE CONNECTIONS, PRODUCT INFORMATION AND DIMENSIONAL PIPE DATA. INSTALLATION RECOMMENDATIONS ARE ALSO SPECIFIED IN TECHNICAL NOTE 504: HOPE CONNECTION TO MANHOLES AND STRUCTURES.
3. PERFORMANCE HIGHLY DEPENDENT ON INSTALLATION. CONTRACTORS MUST INSURE MANHOLE GASKETS IS INTEGRAL, SEALED MANHOLE STRUCTURE ADAPTER, EXTRA PRECAUTIONS MUST BE TAKEN TO PREVENT DIFFERENTIAL SETTLEMENT BETWEEN THE PIPE AND MANHOLE.

[illegible]

CITY OF ROCKWALL AND THE NORTH CENTRAL TEXAS COUNCIL OF GOVERNMENTS (NCTCOG) 3RD EDITION STANDARD CONSTRUCTION DETAILS.

SITE DETAILS (1 OF 2)

CITY of ROCKWALL, TEXAS

Dallas, Texas 75251
Copyright © 2009 RKM Consulting Engineers, Inc.

RECORD DRAWING
RECORD INFORMATION PROVIDED BY
CONASTER CONSTRUCTION, FORT WORTH, TEXAS
ELEVATION VERIFICATION PERFORMED BY
SURVEY CONSULTANTS, INC., PLANO, TEXAS

