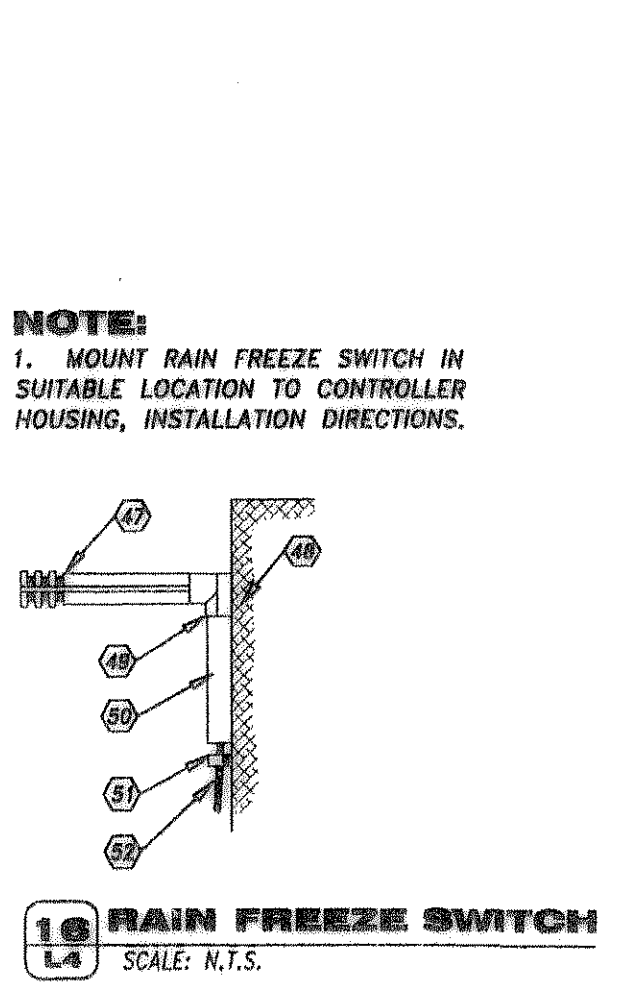
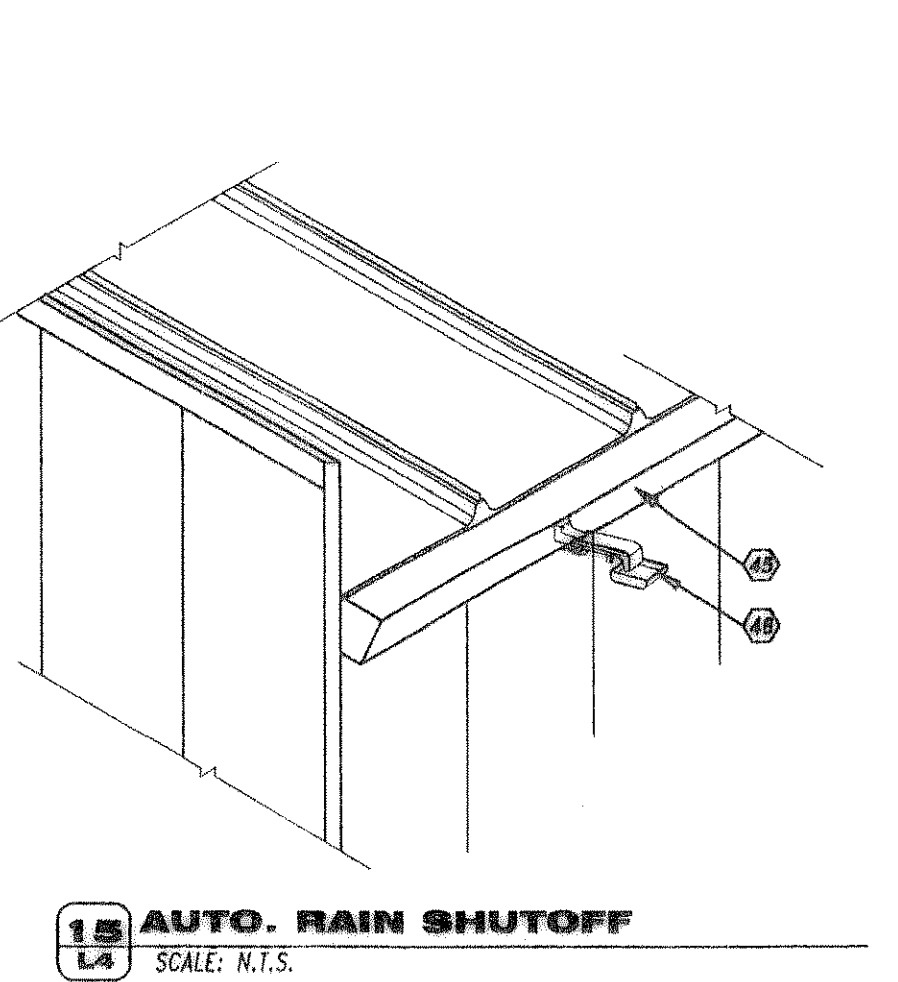
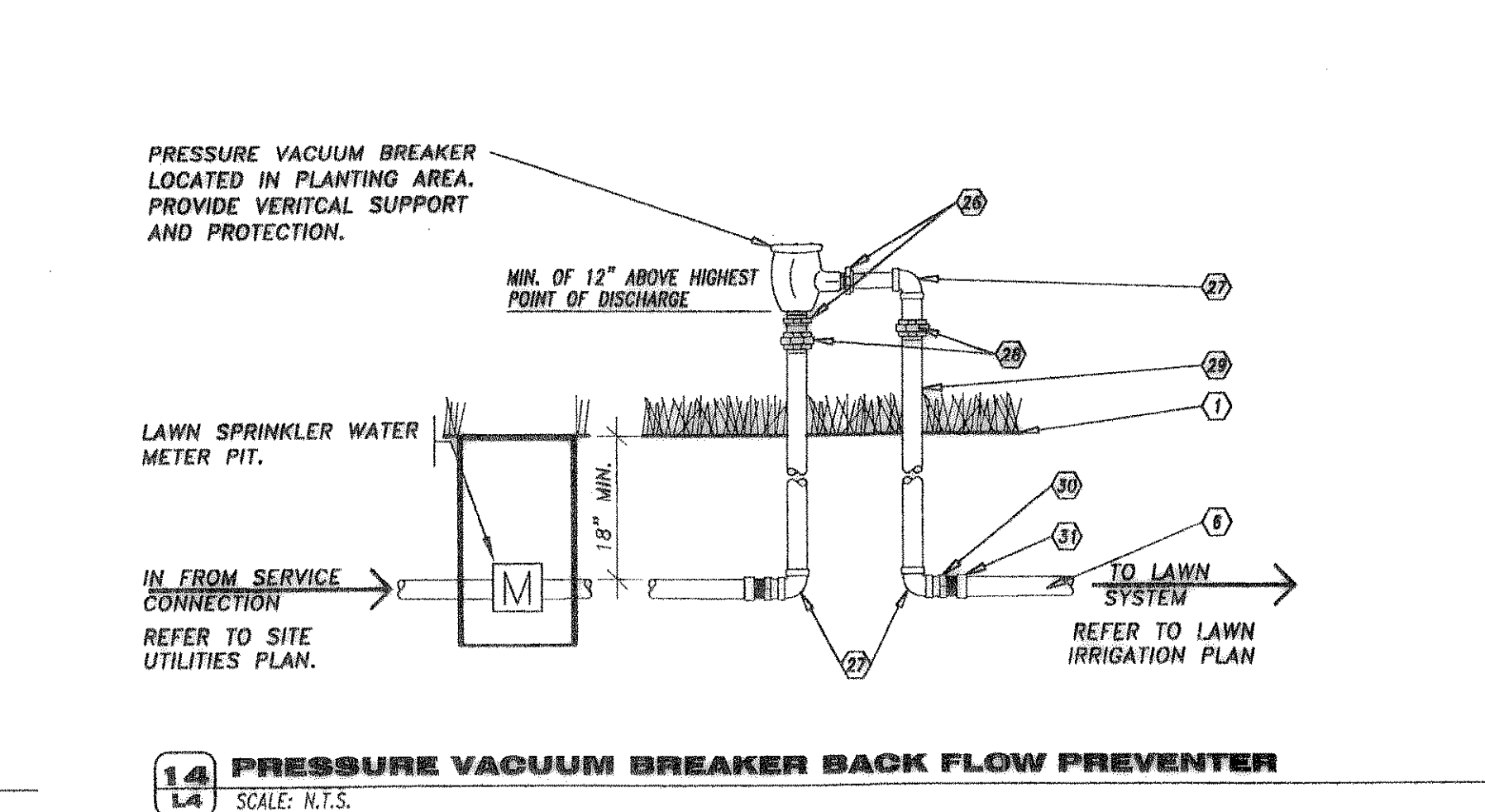
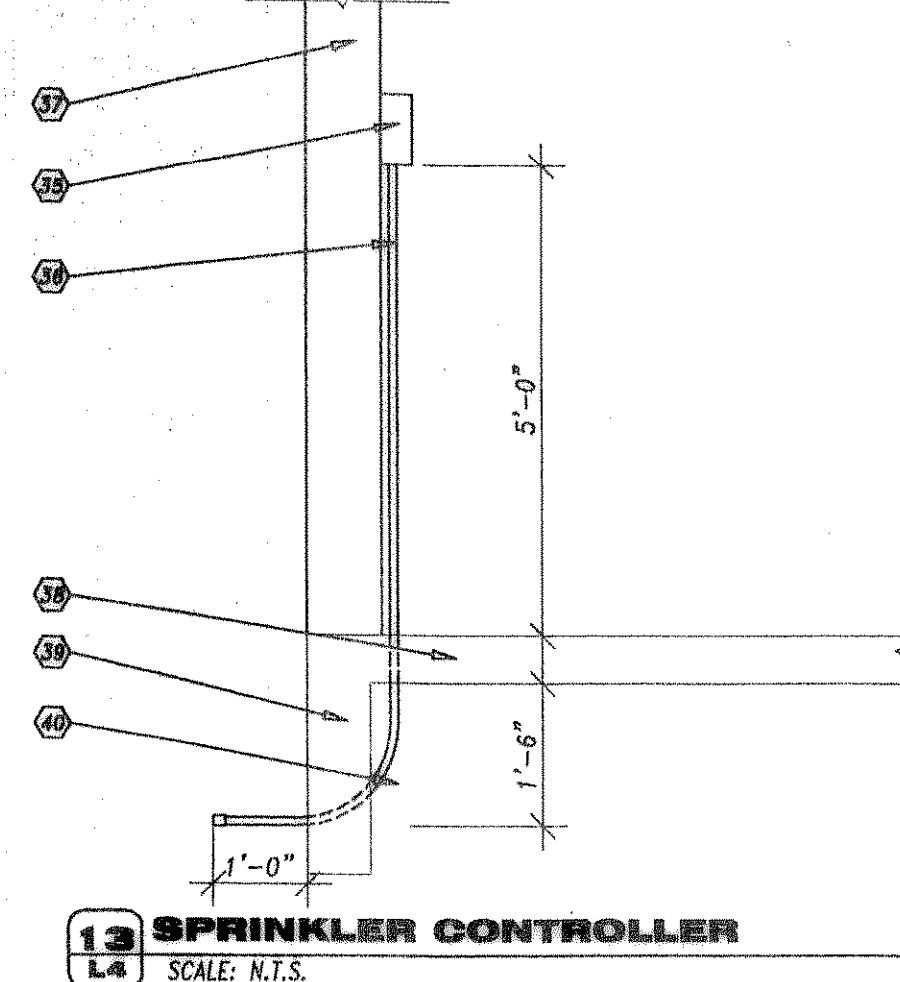
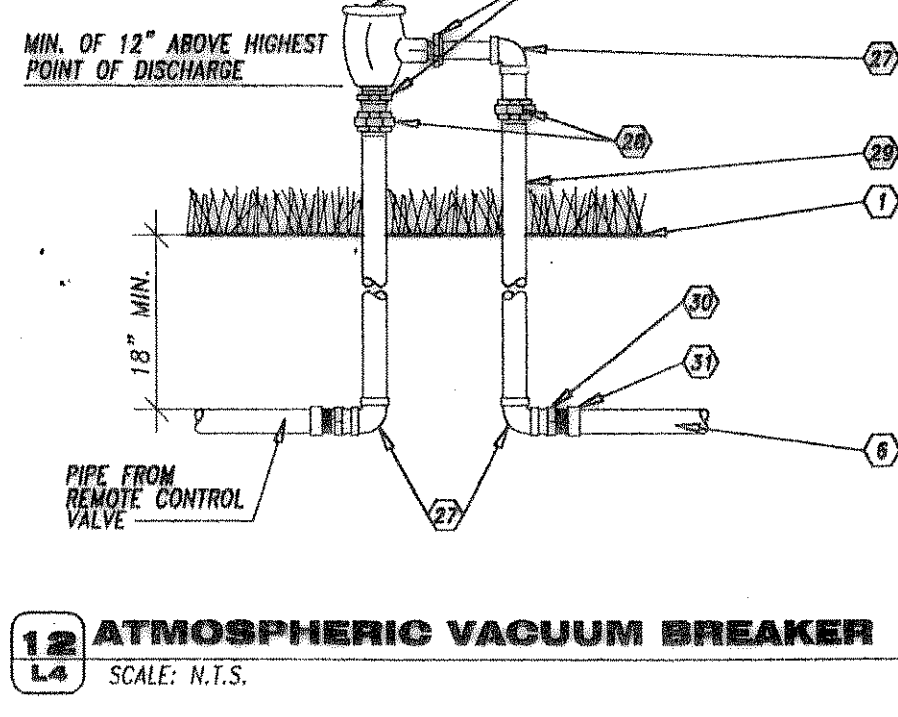
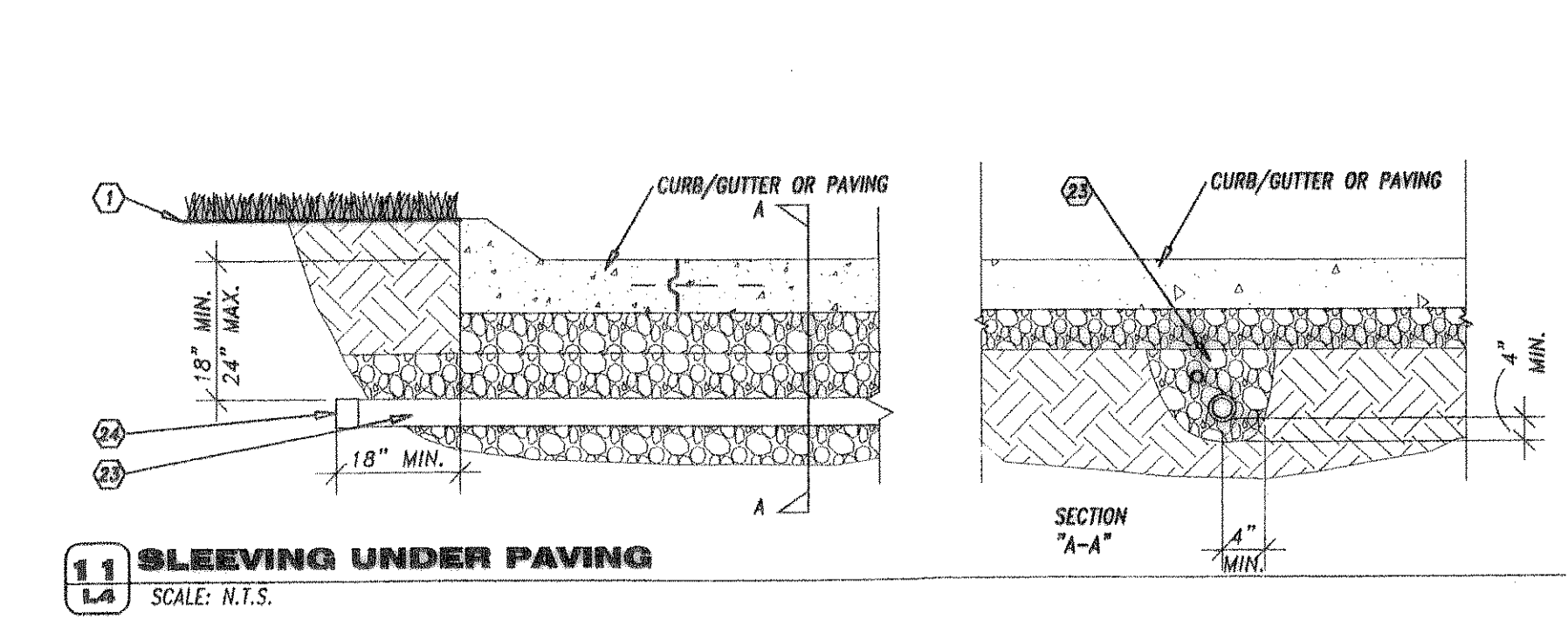
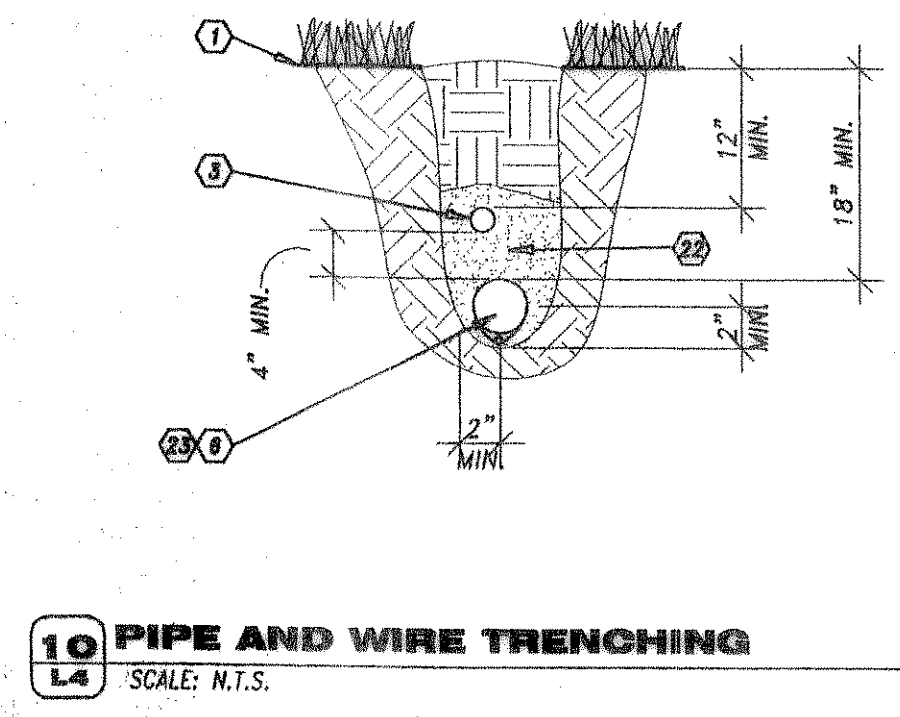
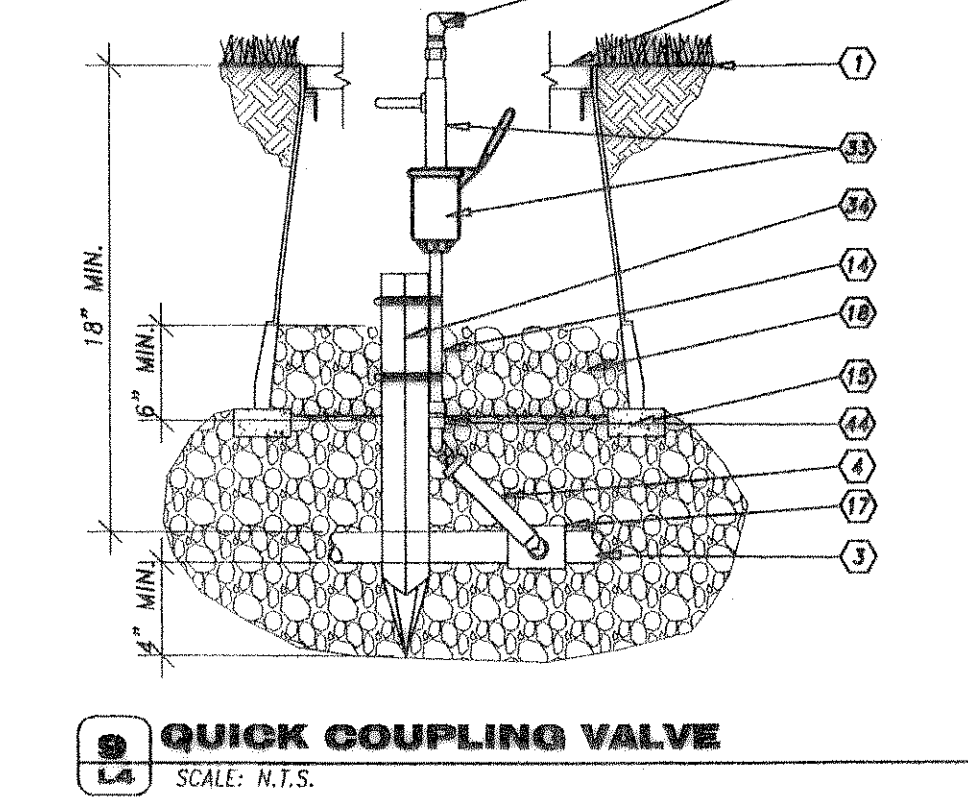
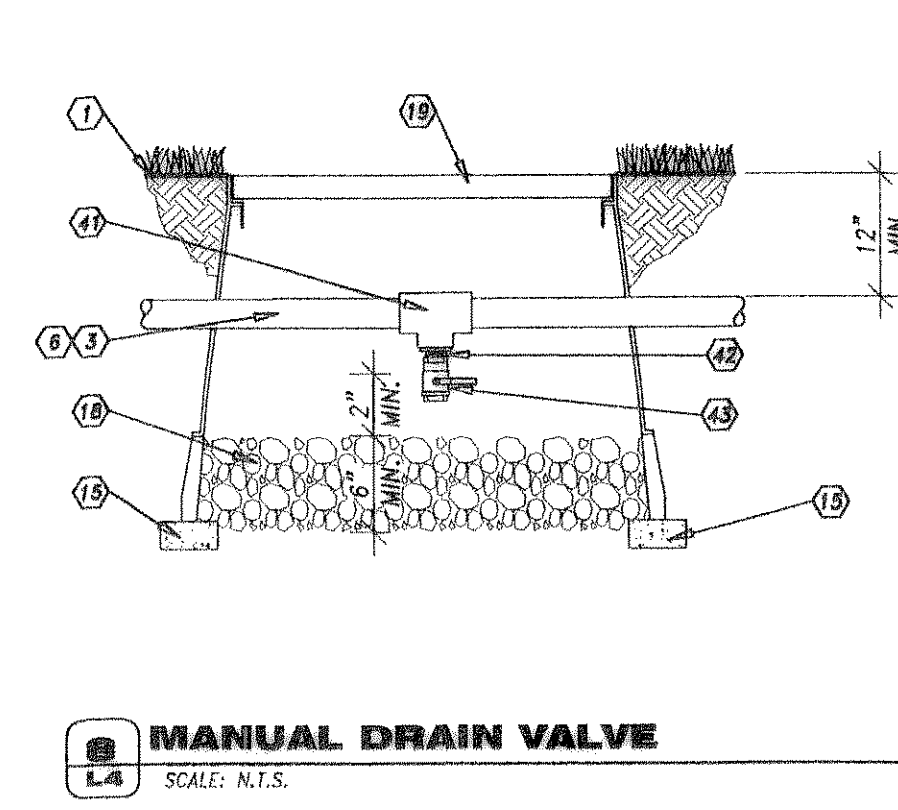
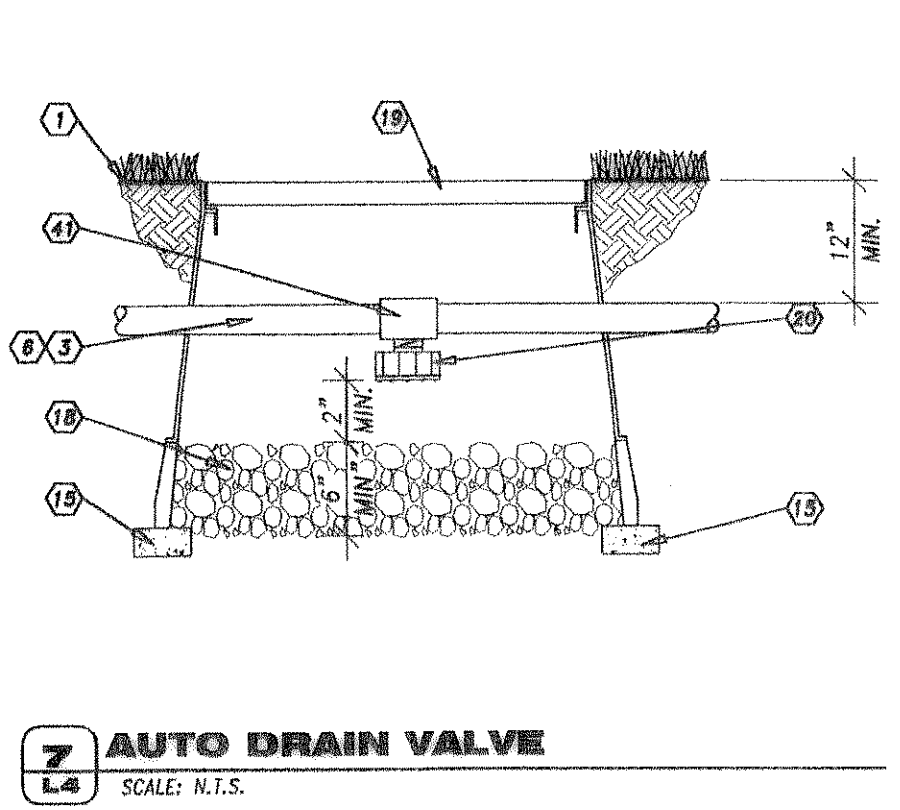
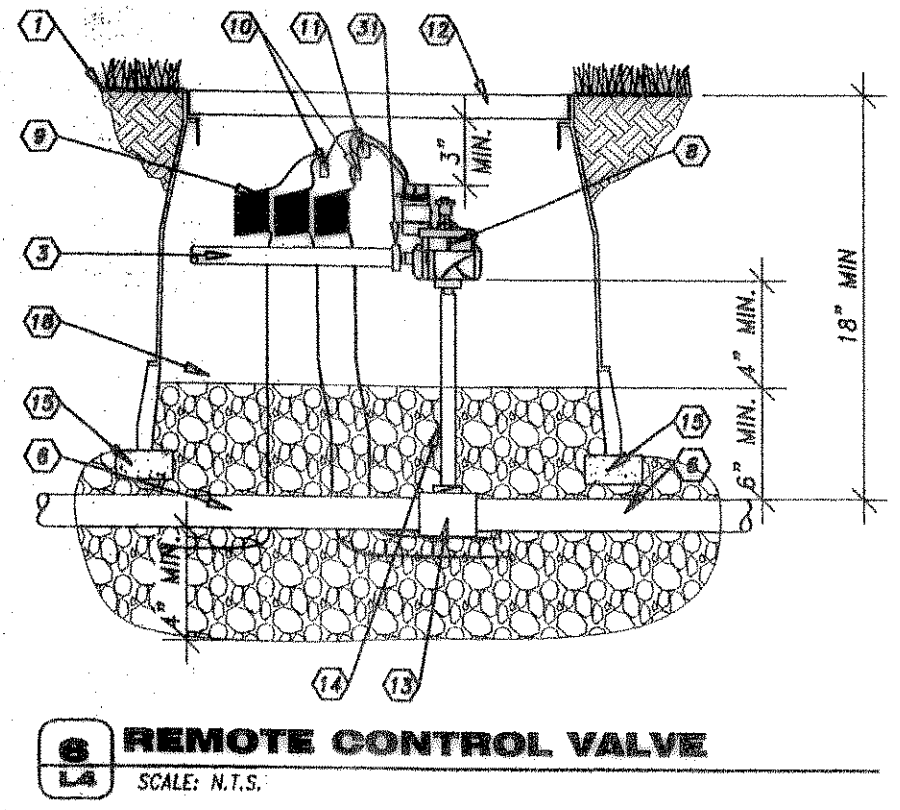
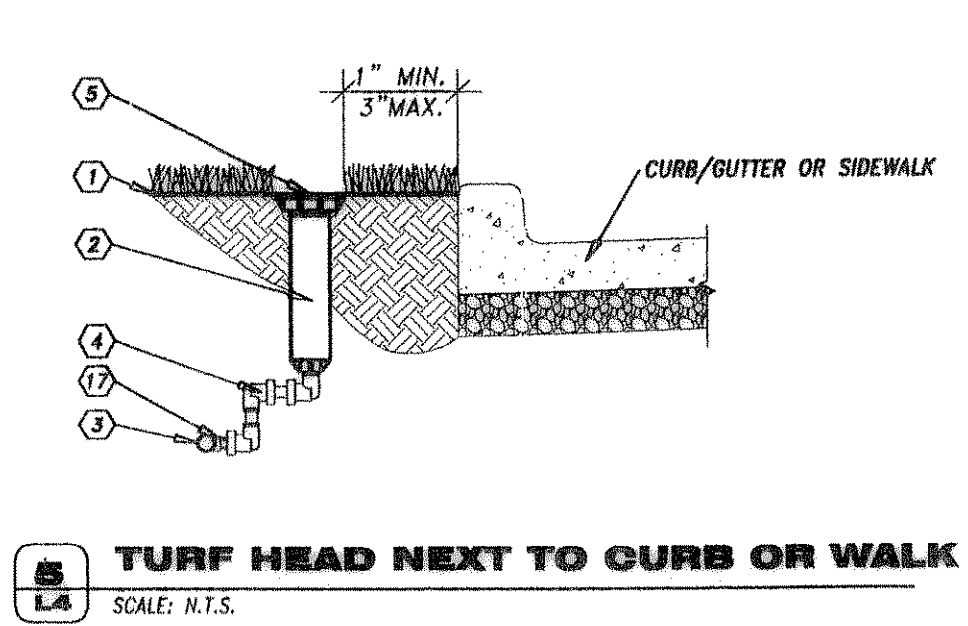
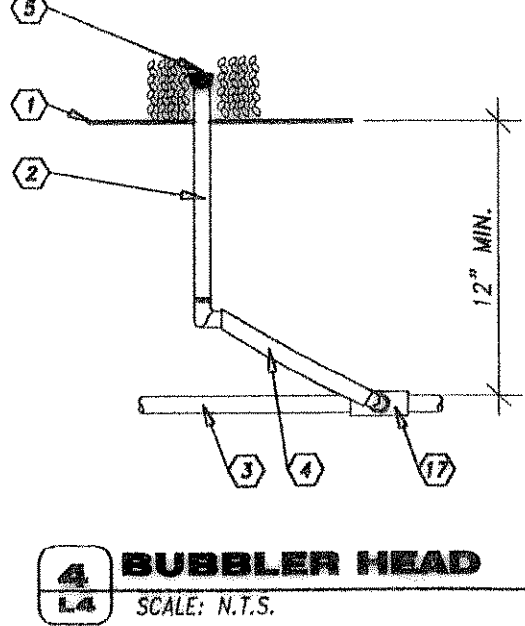
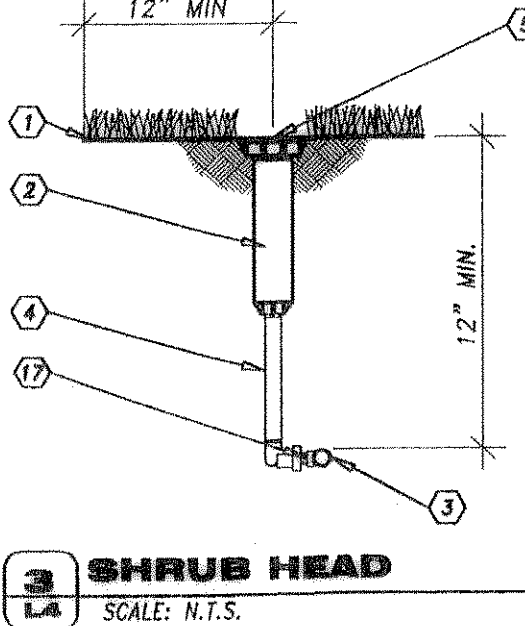
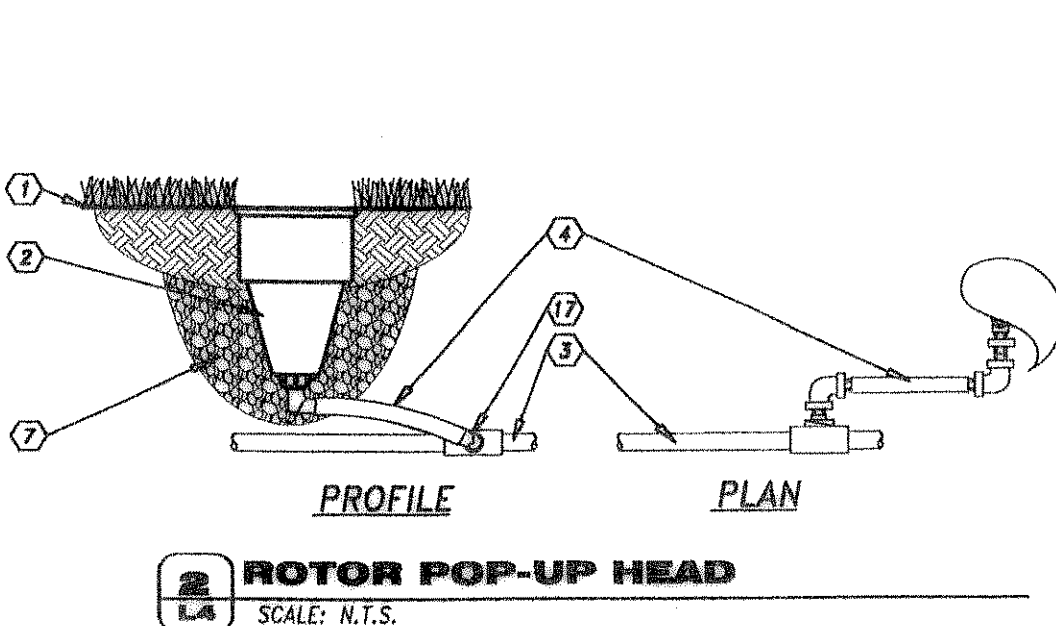
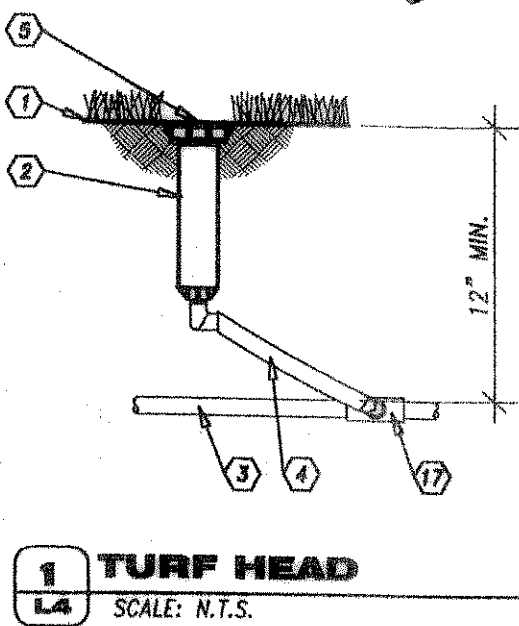


RECORD DRAWING
 DATE: 02/02/2006



- GENERAL NOTES**
- A. REFER TO PROJECT MANUAL FOR ADDITIONAL REQUIREMENTS.
- B. COORDINATE WORK WITH OTHER SITE DEVELOPMENT RELATED DRAWINGS.
- IRRIGATION DETAIL KEY NOTES**
- 1 FINISH GRADE/TOP OF MULCH
- 2 POP - UP SPRAY SPRINKLER
- 3 CLASS 200 PVC OR 100 PSI PE LATERAL PIPE
- 4 12" SWING ASSEMBLY, MPT x MPT. THREADS TO MATCH SPRINKLER HEAD AND LATERAL SIZE.
- 5 NOZZLE
- 6 SCH 40 PVC OR 180 PSI PE MAINLINE
- 7 1 CU. FT. CREEK GRAVEL
- 8 REMOTE CONTROL ANGLE VALVE. REFERENCE SHEET L3 FOR SIZE AND TYPE.
- 9 30" LINEAR LENGTH OF WIRE, COILED
- 10 WATER PROOF CONNECTIONS
- 11 I.D. TAG
- 12 VALVE BOX WITH COVER: 12" SIZE
- 13 SCH. 80 ELL, S x S
- 14 SCH 80 PVC NIPPLE, MPT x MPT (LENGTH AS REQUIRED)
- 15 BRICK
- 16 FOR PVC MAIN - SCH 80 TEE, S x S x S, AND SCH. 80 NIPPLE (2" LENGTH, HIDDEN). FOR PE MAIN - SCH 80 TEE, FPT x FPT x S, AND SCH 80 NIPPLE (2" LENGTH, HIDDEN) WITH TWO HOSE ADAPTERS, MPT x INSERT, AND TWO S.S. HOSE CLAMPS, OFFSET, PER HOSE ADAPTER.
- 17 SCH 40 TEE, S x S x FPT (PVC LATERAL) OR, FPT x FPT x FPT WITH TWO HOSE ADAPTERS, MPT x INSERT AND TWO S.S. HOSE CLAMPS, OFFSET, PER HOSE ADAPTER (PE LATERAL).
- 18 3/4" DIAMETER WASHED GRAVEL
- 19 VALVE BOX WITH COVER: 6" SIZE
- 20 FILTER DRAIN VALVE
- 21 MAIN LINE, TAPE WIRES TO BOTTOM SIDE OF MAIN LINE AT 5'-0" O.C.
- 22 2" SAND OR ROCK FREE SOIL ALL AROUND PIPE
- 23 PVC IRRIGATION SLEEVE TO BE SCH 40 PVC PIPE. ALL JOINTS TO BE SOLVENT WELDED AND WATER TIGHT
- 24 PVC CAP TYP.
- 25 ATMOSPHERIC VACUUM BREAKER
- 26 COPPER MALE ADAPTER
- 27 COPPER 90° ELL
- 28 COPPER UNION
- 29 COPPER PIPE
- 30 COPPER FEMALE ADAPTER
- 31 PVC MALE ADAPTER OR HOSE ADAPTER, MPT x INSERT, AND TWO S.S. HOSE CLAMPS, OFFSET, PER HOSE ADAPTER
- 32 HOSE BIB ELL
- 33 QUICK COUPLING VALVE
- 34 2" x 2" REDWOOD OR GROUND CONTACT CCA STAKE WITH STAINLESS STEEL WORM GEAR CLAMPS OR EQUIVALENT
- 35 CONTROLLER
- 36 2 1/2" RIGID STEEL PIPE LOCATED NEXT TO WALL (1) FOR EACH CONTROLLER
- 37 EXTERIOR WALL
- 38 FLOOR SLAB
- 39 FOUNDATION FOOTING
- 40 2 1/2" RIGID STEEL PIPE ELBOW 12" RADIUS MIN. INSTALLED BY GENERAL CONTRACTOR.
- 41 FOR PVC PIPE - SCH 80 TEE, S x S x FPT. FOR PE MAIN - SCH 80 TEE, FPT x FPT x FPT. WITH TWO HOSE ADAPTERS, MPT x INSERT, AND TWO S.S. HOSE CLAMPS, OFFSET, PER HOSE ADAPTER. REDUCE TEE AS NECESSARY TO MATCH VALVE THREADS.
- 42 1/2" THREADED x SHORT NIPPLE
- 43 1/2" BRASS BALL VALVE
- 44 SCH 80 PVC COUPLING, T x T
- 45 ROOF EDGE.
- 46 AUTOMATIC RAIN SHUTOFF. REFER TO MFG. SPEC. FOR PROPER INSTALLATION INSTRUCTION.
- 47 RAIN FREEZE SWITCH, INSTALL OPEN SIDE UP, POROUS FOAM TOWARDS GROUND.
- 48 IRRIGATION CONTROLLER HOUSING, BUILDING WALL.
- 49 MOUNTING BRACKET
- 50 1/2" PVC CONDUIT
- 51 SECURE WIRE WITH CABLE TIE BRACKET.
- 52 WIRE TO IRRIGATION CONTROLLER (CONNECT TO CONTROLLER COMMON WIRE PER INSTALLATION DIRECTIONS)
- NOTE:**
1. MOUNT RAIN FREEZE SWITCH IN SUITABLE LOCATION TO CONTROLLER HOUSING, INSTALLATION DIRECTIONS.

IRRIGATION DETAILS

CASCO
 10877 WATSON ROAD
 ST. LOUIS, MO 63127
 PROJECT MANAGERS

ISSUED FOR PERMIT:
 ISSUED FOR BID:
 REVISIONS:
 NO. DATE
 REMARKS:
 REV. 1 5/05/04
 ENGINEERING PLANS RESUBMITTAL
 REV. 2 5/26/04
 ENGINEERING PLANS RESUBMITTAL
 REV. 1 11/11/04
 ENGINEERING PLANS RESUBMITTAL
 REV. 2 12/30/04
 ENGINEERING PLANS RESUBMITTAL

O'Reilly == AUTO PARTS ==
 PROJECT:
 NEW O'REILLY AUTO PARTS STORE
 RIDGE ROAD
 ROCKWALL, TEXAS
 233 SOUTH PATTERSON
 SPRINGFIELD, MO 65802
 PHONE: (417) 862-3333

REGISTERED ARCHITECT
 RALPH R. SWAN
 7471
 PROFESSIONAL OF RECORD
 PHONE: 314-821-1100
 JOB NO.: 904522
 DRAWN: MAM
 CHECKED: CRM
 DATE: 3/01/04
 SCALE: 1/2"=1'-0"
 SHEET:

L4