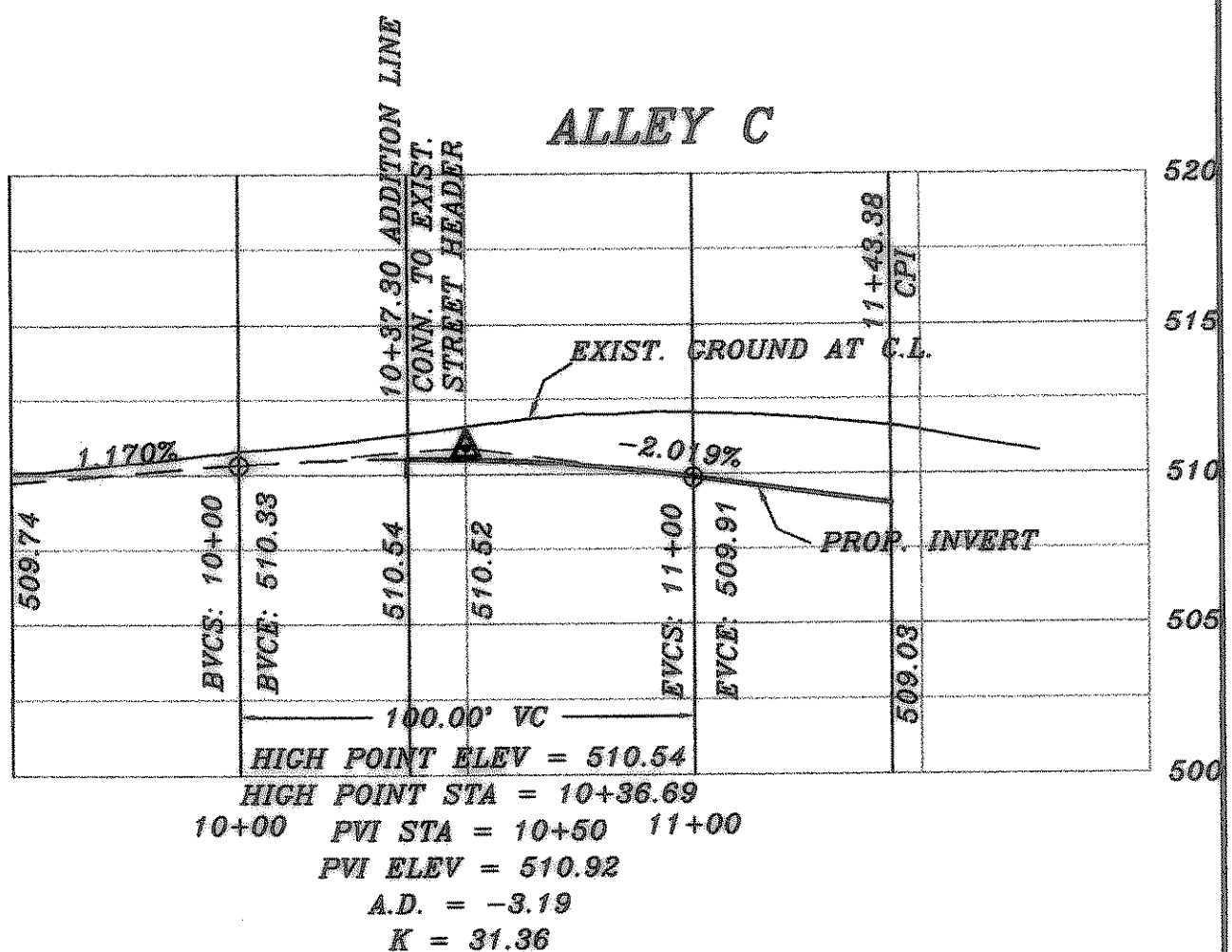
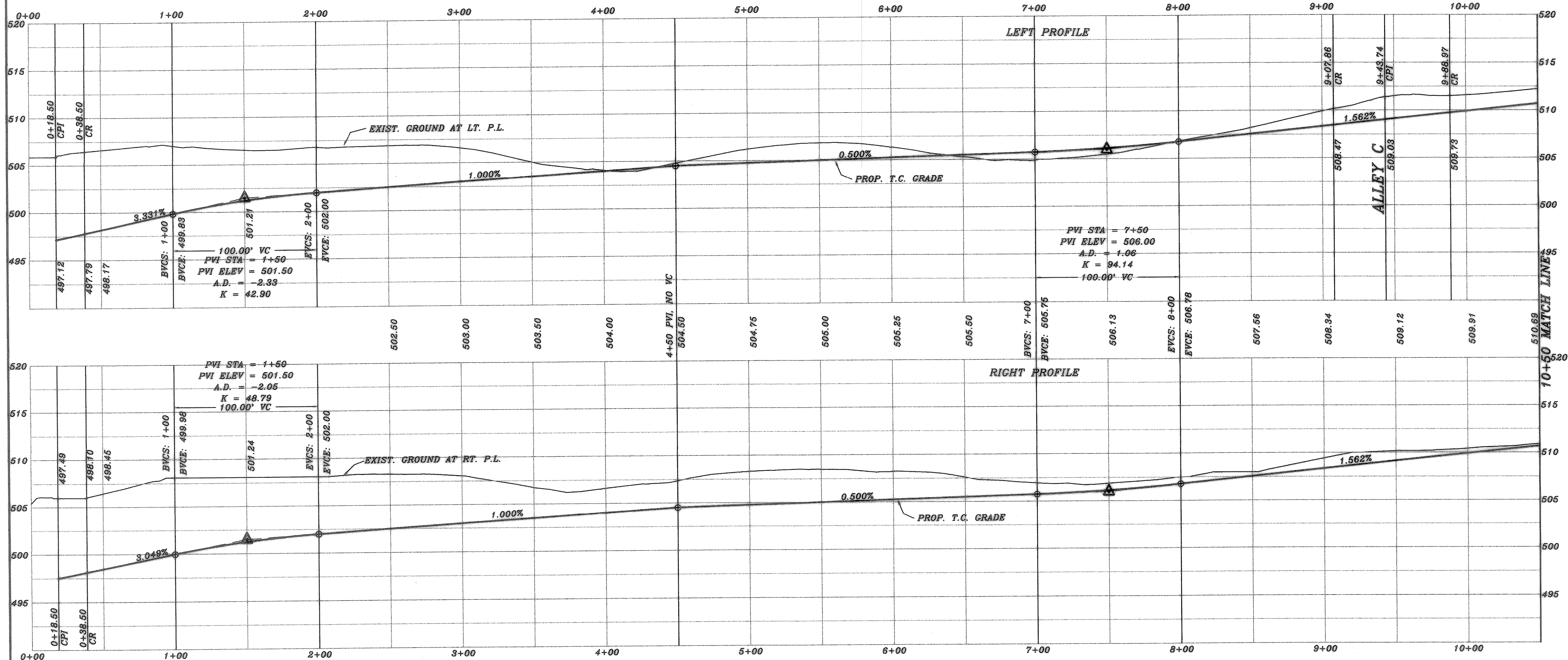
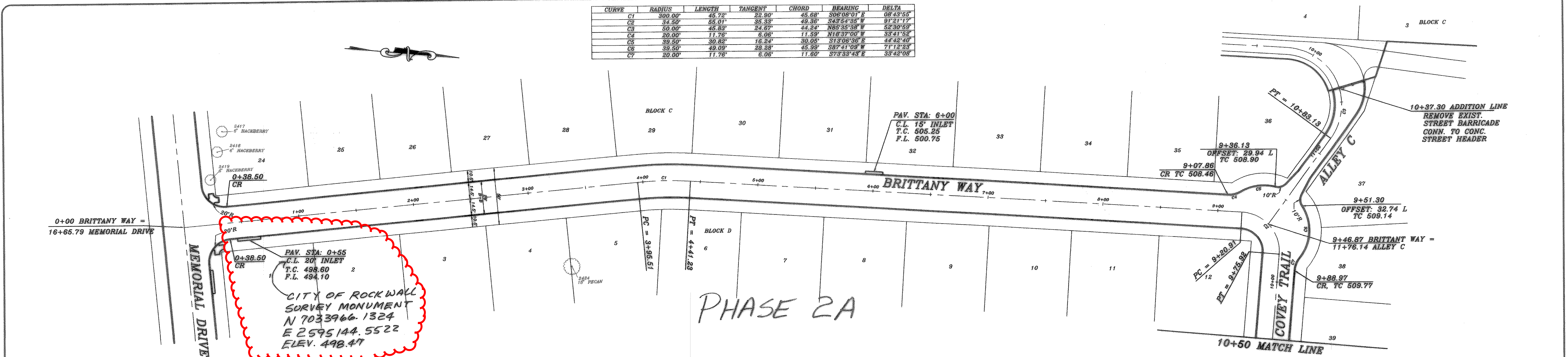


CURVE	RADIUS	LENGTH	TANGENT	CHORD	BEARING	DELTA
C1	300.00'	45.78'	22.90'	45.68'	S06°08'01" E	08°43'55"
C2	34.50'	55.01'	35.33'	49.36'	S43°54'35" W	91°21'17"
C3	50.00'	45.63'	24.67'	44.24'	N63°33'30" W	52°30'52"
C4	20.00'	11.76'	6.06'	11.59'	N18°37'00" W	33°41'52"
C5	39.50'	30.82'	16.24'	30.05'	S13°08'36" E	44°42'40"
C6	39.50'	49.09'	28.28'	45.99'	S87°41'09" W	71°12'23"
C7	20.00'	11.76'	6.06'	11.60'	S73°33'43" E	33°42'08"



BENCH MARK  
SQUARE CUT IN CONCRETE AT BASE OF  
CONCRETE WALL AT S.W. CORNER OF  
SOUTH APPROACH TO BRIDGE OVER  
SQUABBLE CREEK ON HWY. 205  
ELEV.: 472.41

BENCH MARK  
60D NAIL IN 36" PECAN TREE (TREE NO. 2302)  
PAV. STA. 8+30, 71' RT., MEMORIAL DRIVE  
ELEV.: 466.79

BENCH MARK  
60D NAIL IN 34" PECAN TREE (TREE NO. 2314)  
PAV. STA. 1+83, 130' RT., AUDUBON LANE  
ELEV.: 480.88

BENCH MARK  
60D NAIL IN 18" PECAN TREE (TREE NO. 2114)  
PAV. STA. 10+37 63.5' RT., AUDUBON LANE  
ELEV.: 501.54



REVISION DESCRIPTION	DATE	SCALE	DESIGN	DRAWN
REV. PER 2nd CITY REVIEW	5/10/01	1" = 40'	H.L.E.	
0020/PHASE2/0020P24	2/1/01	1" = 6'		

HAROLD L. EVANS  
CONSULTING ENGINEER  
2331 CUS THOMASSON ROAD, SUITE 102  
DALLAS, TEXAS 75228. (214) 328-8133

PROPOSED PAVING  
BRITTANY WAY & COVEY TRAIL  
QUAIL RUN VALLEY NO. 2  
CITY OF ROCKWALL

SHEET NO.  
5  
24  
JOB NO.  
0020

ASBUILT  
Winkelmann & Associates, Inc. hereby states that this  
plan, to the best of our knowledge is "As Built."  
Modifications from the originally approved construction  
documents have been made as per information provided by  
the contractor. Winkelmann & Associates, Inc. does not  
certify as to the correctness or quality of construction as no  
field inspection was performed.  
9-27-02  
PH 2A  
9-14-04 PH 2B