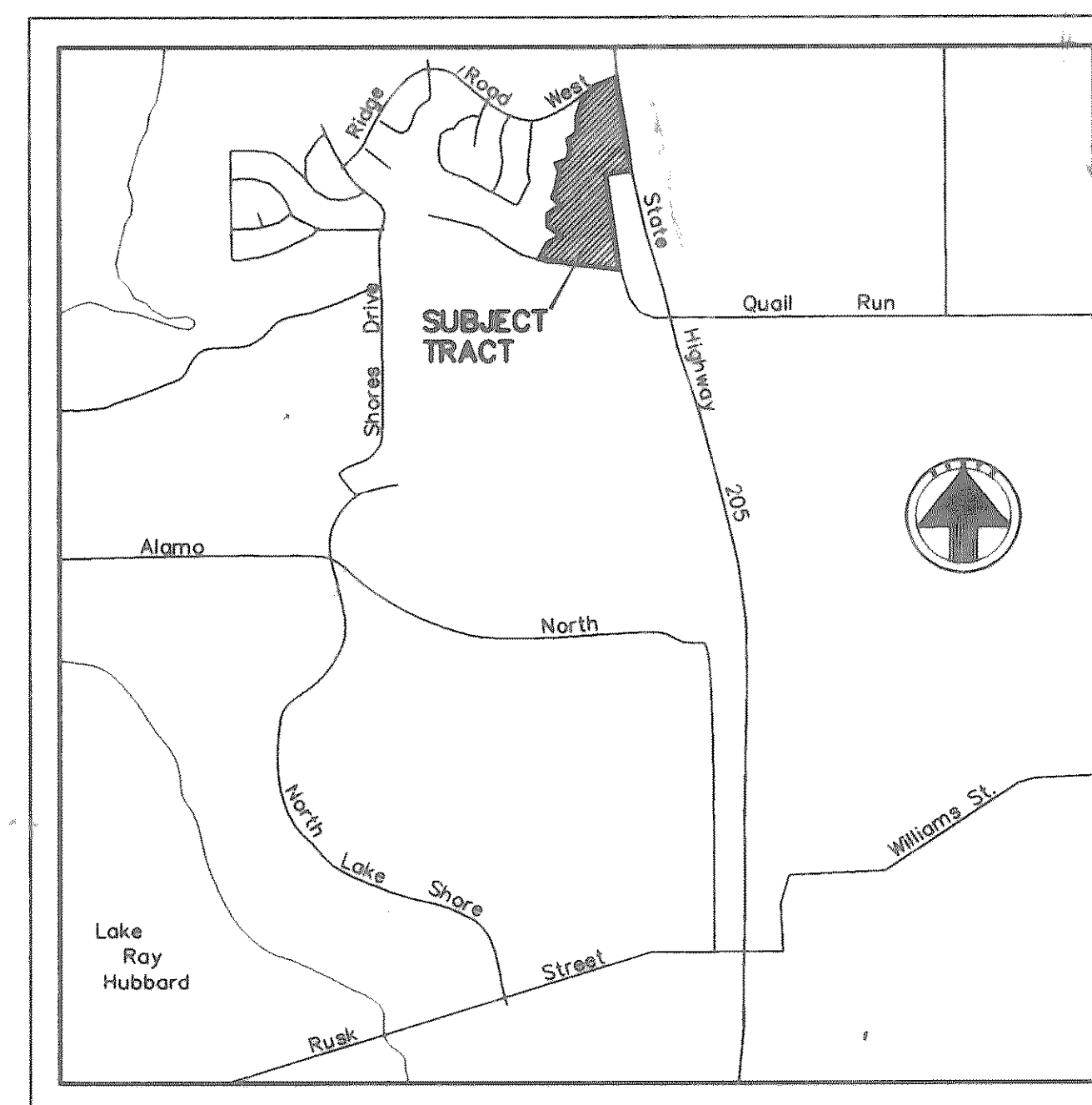


DEVELOPMENT PLANS FOR RANDOM OAKS AT THE SHORES CITY OF ROCKWALL, TEXAS

GENERAL NOTES

1. All street and alley intersections and connections shall be built by the Developer.
2. Excavation from streets to be deposited in low areas to allow proper drainage, except existing creek.
3. All existing ditches, except as noted on drainage plans, are to be filled to conform to surrounding terrain.
4. It will be the responsibility of the developer and/or the Contractor to protect and maintain to proper line and grade all public utilities, manholes, cleanouts, valve boxes, fire hydrants, etc. during the construction of this project prior to and after placing permanent pavement.
5. All materials and workmanship shall conform to City Standards and Specifications.



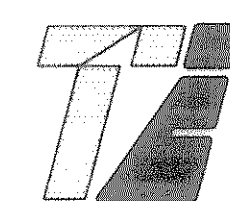
LOCATION MAP
NOT TO SCALE

INDEX

Sheet No.	Description
1	Final Plat
2	Drainage Map
3-6	Paving Plans
7-8	Alley Profiles
9	Storm Sewer Plans
10	Storm Sewer Plans
11	Water & Sewer Plan
12	Sanitary Sewer Profiles
13	Storm Water Pollution Prevention Plan
14-15	Lot Grading Plans
16	Wall & Landscape Plan

PREPARED FOR
HOMEPLACE PROPERTIES

9330 L.B.J. Freeway ~ Suite 1190 ~ Dallas, Texas 75243



TIPTON ENGINEERING, INC.

6330 Belt Line Road ~ Suite C ~ Garland, Texas 75043 (214) 226-2967