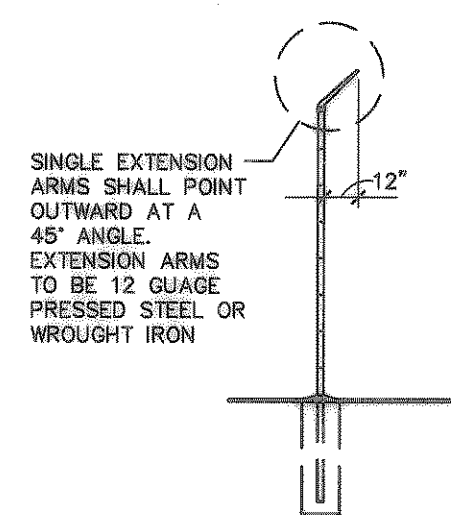
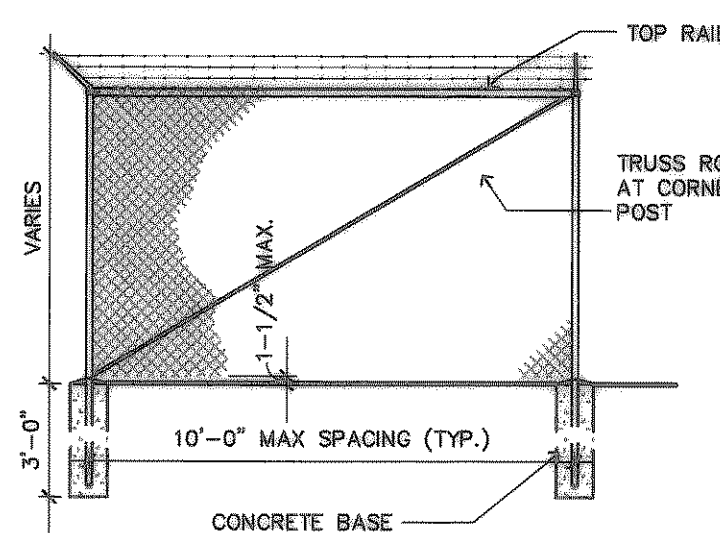


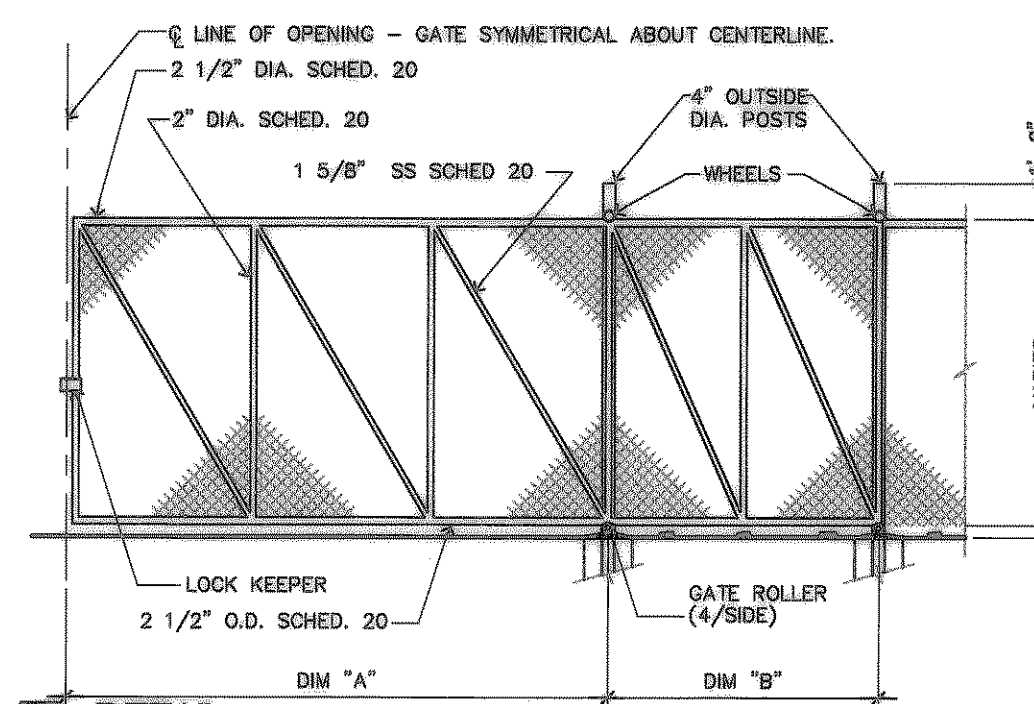
SITE IMPROVEMENT PLAN



40 DETAIL



SCALE: 1/4" = 1'-0"



25 DETAIL

SCALE: 1/4" = 1'-0"

USER NOTES:

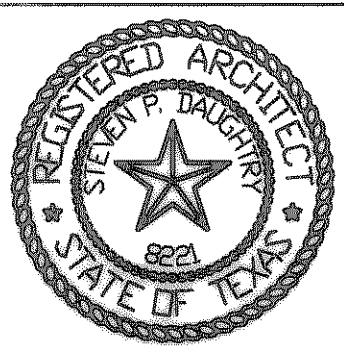
1. THE USE OF SUPPORT WHEELS ON GATES IS NOT RECOMMENDED.
2. PROVIDE LOCK KEEPER FOR ALL GATES.

NOTES:

1. WELD ALL PIPE CONNECTIONS.
2. GATE FABRIC TO MATCH FENCE FABRIC.
3. PROVIDE MATCHING POST CAPS WHERE REQUIRED.
4. EXISTING CURB REMAINS
5. PYLON SIGN, FURNISHED AND INSTALLED BY OTHERS
6. REFER TO DIMENSIONED SHOWROOM PAD PLAN ON SHEET 2.04 FOR SITE IMPROVEMENTS THIS AREA.
7. FIRE HYDRANT WITH 6" STL BOLLARDS (4) & STRIPING.
8. ROLLING GATE, REFER TO DETAIL 25/2.02
9. 8'-0" HIGH CHAIN LINK FENCE WITH 3-STRAND BARBED WIRE, RE TO DETAIL 40/2.02
10. NEW CONCRETE CURB AT ACCESS ROAD INSTALL PER TxDOT REQUIREMENTS
11. NEW CAR DELIVERY AREA

NOTES:

1. KEYED NOTES DESIGNATED BY: (Symbol)
2. LANDSCAPED AREAS FOR FUTURE DEVELOPMENT REFER TO LANDSCAPE PLAN.
3. NEW CONCRETE APPROACH, PER TxDOT REQUIREMENT.
4. REFER TO SHT 2.09 FOR SITE STORM WATER MANAGEMENT PLAN, SHT 2.06 FOR GRADING PLAN, SHT 2.16 FOR SITE LANDSCAPE PLAN.
5. EXISTING CURB REMAINS
6. PYLON SIGN, FURNISHED AND INSTALLED BY OTHERS
7. REFER TO DIMENSIONED SHOWROOM PAD PLAN ON SHEET 2.04 FOR SITE IMPROVEMENTS THIS AREA.
8. FIRE HYDRANT WITH 6" STL BOLLARDS (4) & STRIPING.
9. ROLLING GATE, REFER TO DETAIL 25/2.02
10. 8'-0" HIGH CHAIN LINK FENCE WITH 3-STRAND BARBED WIRE, RE TO DETAIL 40/2.02
11. NEW CONCRETE CURB AT ACCESS ROAD INSTALL PER TxDOT REQUIREMENTS
12. 6 1/2" THK, 3500 PSI CONC. FIRE LANE PAVING
13. TOTAL REQUIRED PARKING SPACES: 99
14. STANDARD STOP SIGN WITH ONE WAY SIGN
15. FIRE LANE STRIPING PER CITY OF ROCKWALL REQUIREMENTS.
16. ACCESSIBILITY ROUTE PER TAS, STRIPED.
17. CURB RAMP REFER TO DETAIL 15/2.03
18. CONCRETE BUMPER, REFER TO DETAIL 30/2.01
19. ACCESSIBLE PARKING SIGN, (VAN), REFER TO DETAIL 30/2.07
20. ACCESSIBLE PARKING SIGN, REFER TO DETAIL 25/2.07
21. SITE DIRECTIONAL SIGN FURNISHED BY OTHERS
22. NOT USED
23. 4" LANE STRIPING
24. STRIPE REQUIRED PARKING SPACES ONLY
25. UTILITY TRANSFORMER.
26. 6' SIDEWALK



2505-74th ST.
LUBBOCK, TEXAS 79423

PH: (806) 746-1003
FAX: (806) 746-1225

ALLIED ASSOCIATES
CONSULTING
ENGINEERS
STRUCTURAL • MECHANICAL • ELECTRICAL

ROCKWALL FORD - MERCURY



ROCKWALL, TX.

990 E. I-30

PROJECT NO. F88-0201

DATE: 08/14/98

REVISIONS:

SHEET NO.

2.02