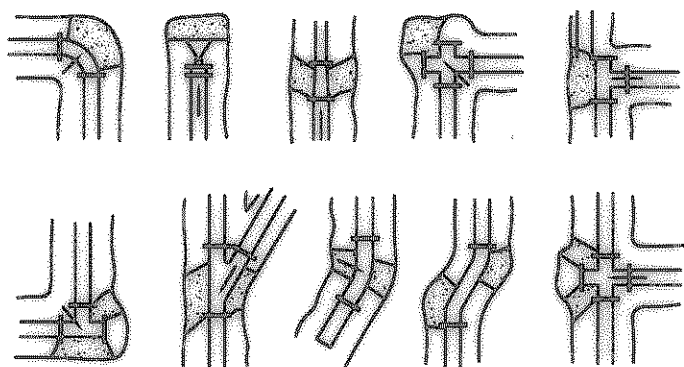


26 "LN-A" SANITARY SEWER
SCALE: 1" VERTICAL = 1'-0", 1" = 30'-0" HORIZONTAL



TYPICAL THRUST BLOCKING DETAILS

TYPICAL THRUST BLOCKING DETAILS

- NOTES:**
- The earth bearing surface shall be undisturbed material. Top of blocks free from concrete thrust block to be constructed of 1500 P.S.I. (30 MPa) concrete and placed as shown on "Typical Blocking Details" above.
 - It shall be the responsibility of the contractor to install adequate thrust blocking. The HORIZONTAL BLOCKING TABLE shows the minimum thrust blocking area required (in square feet) bearing against undisturbed trench wall.
 - All fittings shall be blocked regardless of the angle or direction, except as noted in the chart.
 - Soil bearing strength is assumed. To be 2,000 P.S.F. Site conditions may vary which will require modifications to the blocking calculations.

HORIZONTAL BLOCKING TABLE

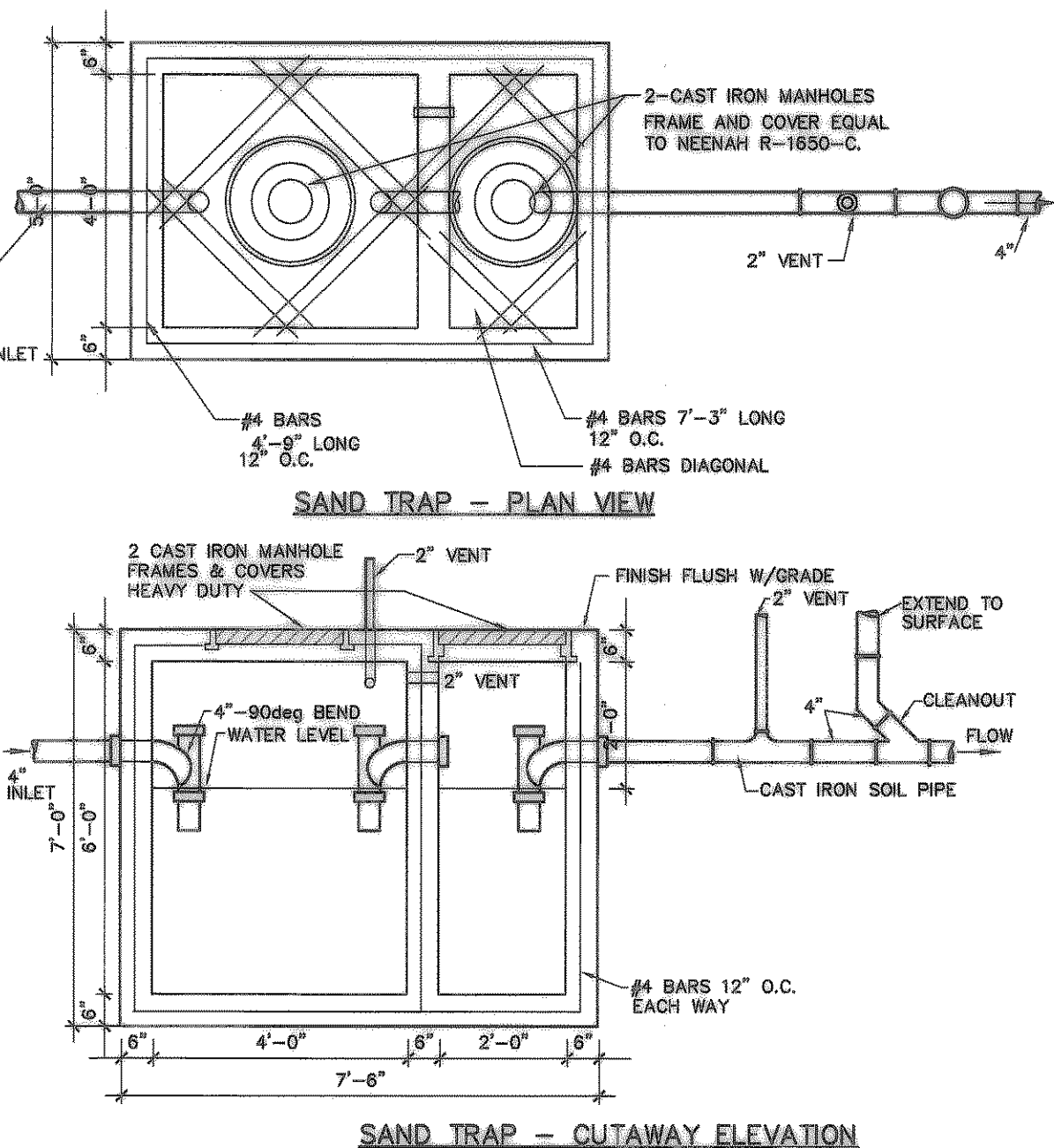
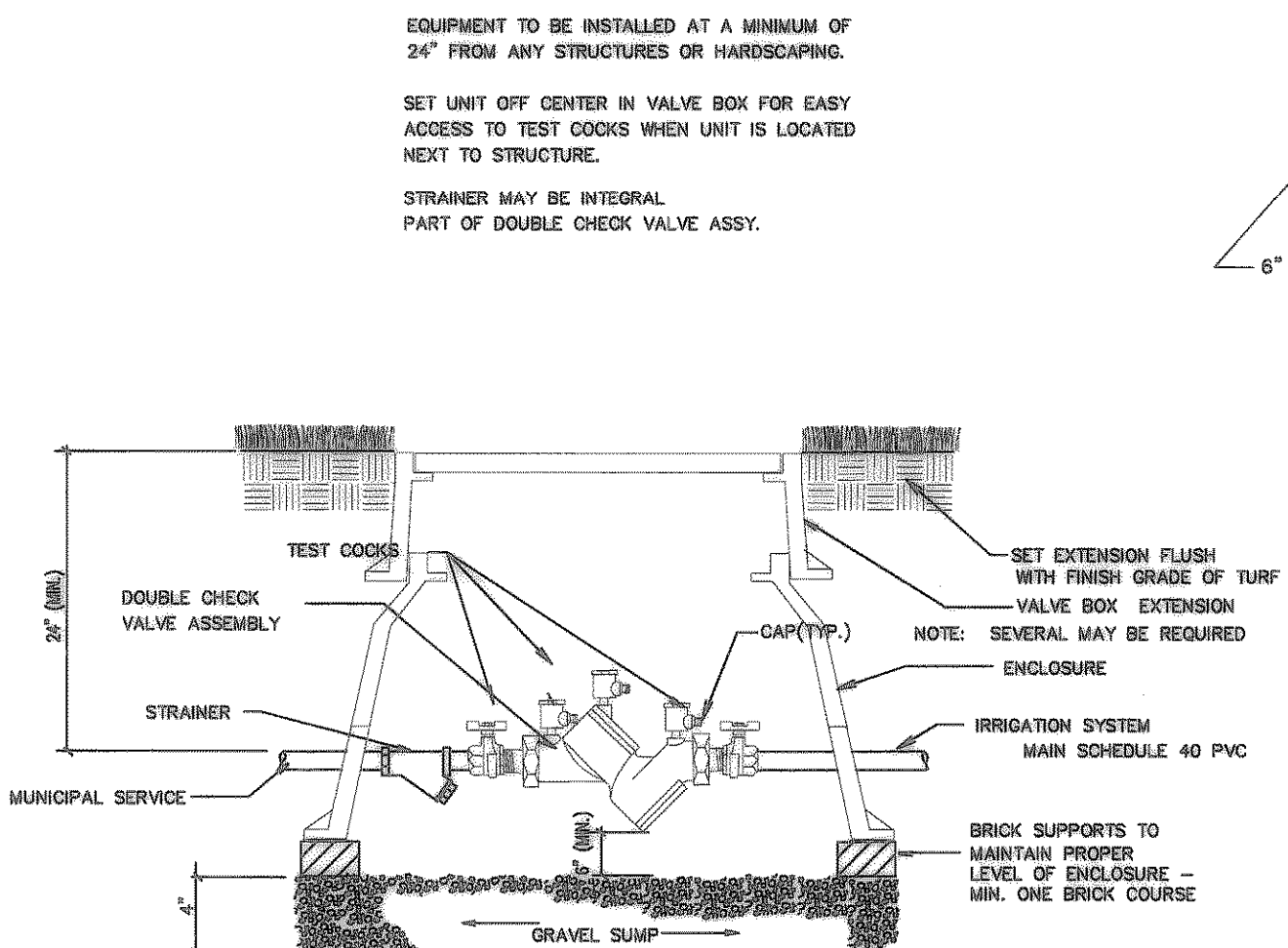
PIPE SIZE (IN.)	THRUST (POUNDS)	BLOCKING (SQUARE FEET)					
		90° BEND	45° BEND	22-1/2° BEND	11-1/4° BEND	5° DEFLECT	5° DEFLECT
4	5,450	1.23	1.73	0.82	0.50	0.50	0.50
6	5,515	2.75	3.80	2.11	1.08	0.54	0.50
8	6,800	4.90	6.93	3.75	1.91	0.85	0.50
10	15,315	7.66	10.83	5.88	2.89	1.50	0.67
12	22,024	11.03	15.52	8.43	4.30	2.18	0.78

BASED ON 2,000 P.S.F. SOIL BEARING CAPACITY AND 180 P.S.I. LINE PRESSURE (150 P.S.I. WORKING PRESSURE PLUS 30% FOR WATER HAMMER)

28 TYPICAL PIPE THRUST BLOCKING DETAILS
NOT TO SCALE

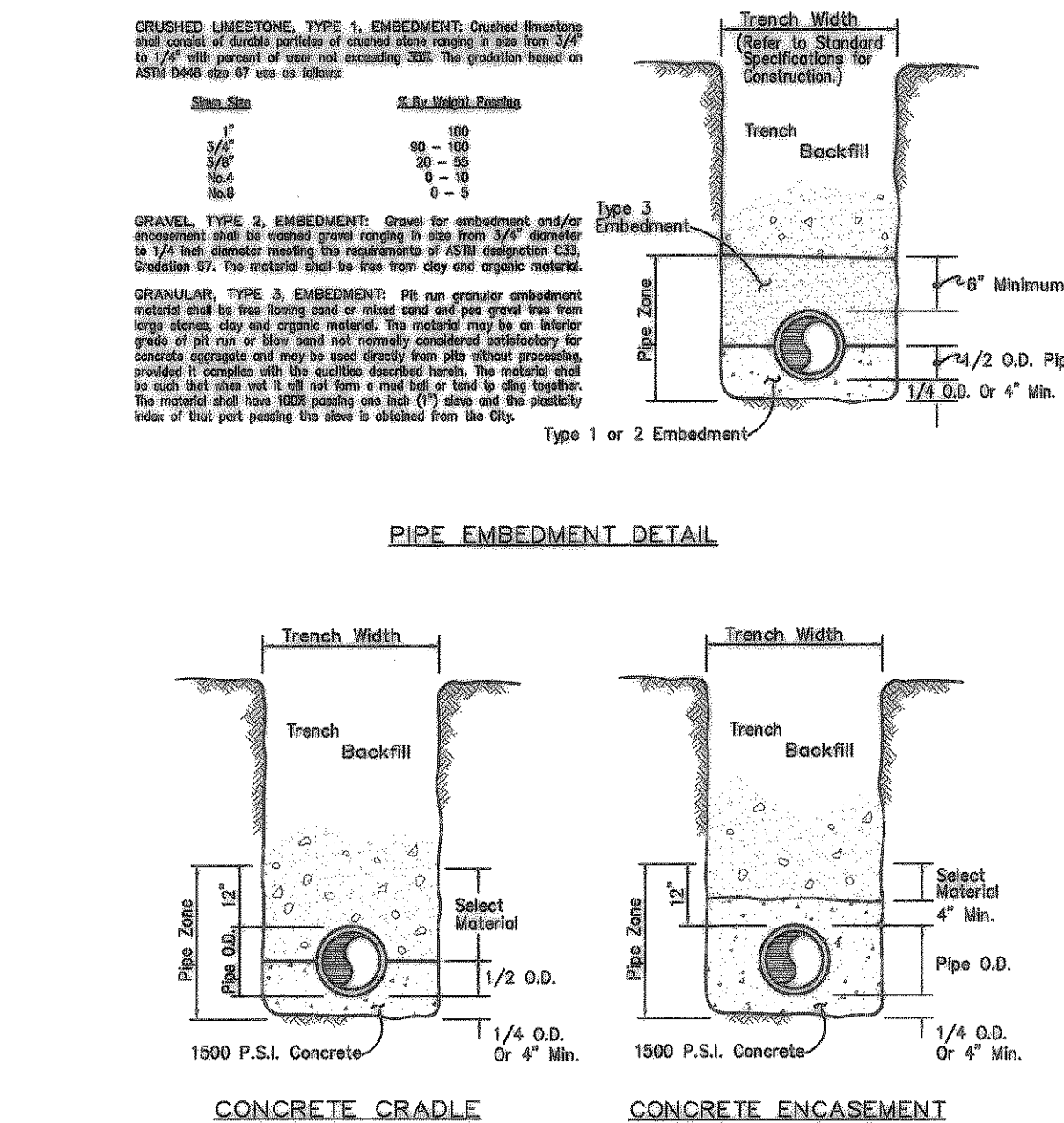
18 CONCRETE COLLAR DETAIL
NOT TO SCALE

8 INSIDE DROP MANHOLE DETAIL
NOT TO SCALE

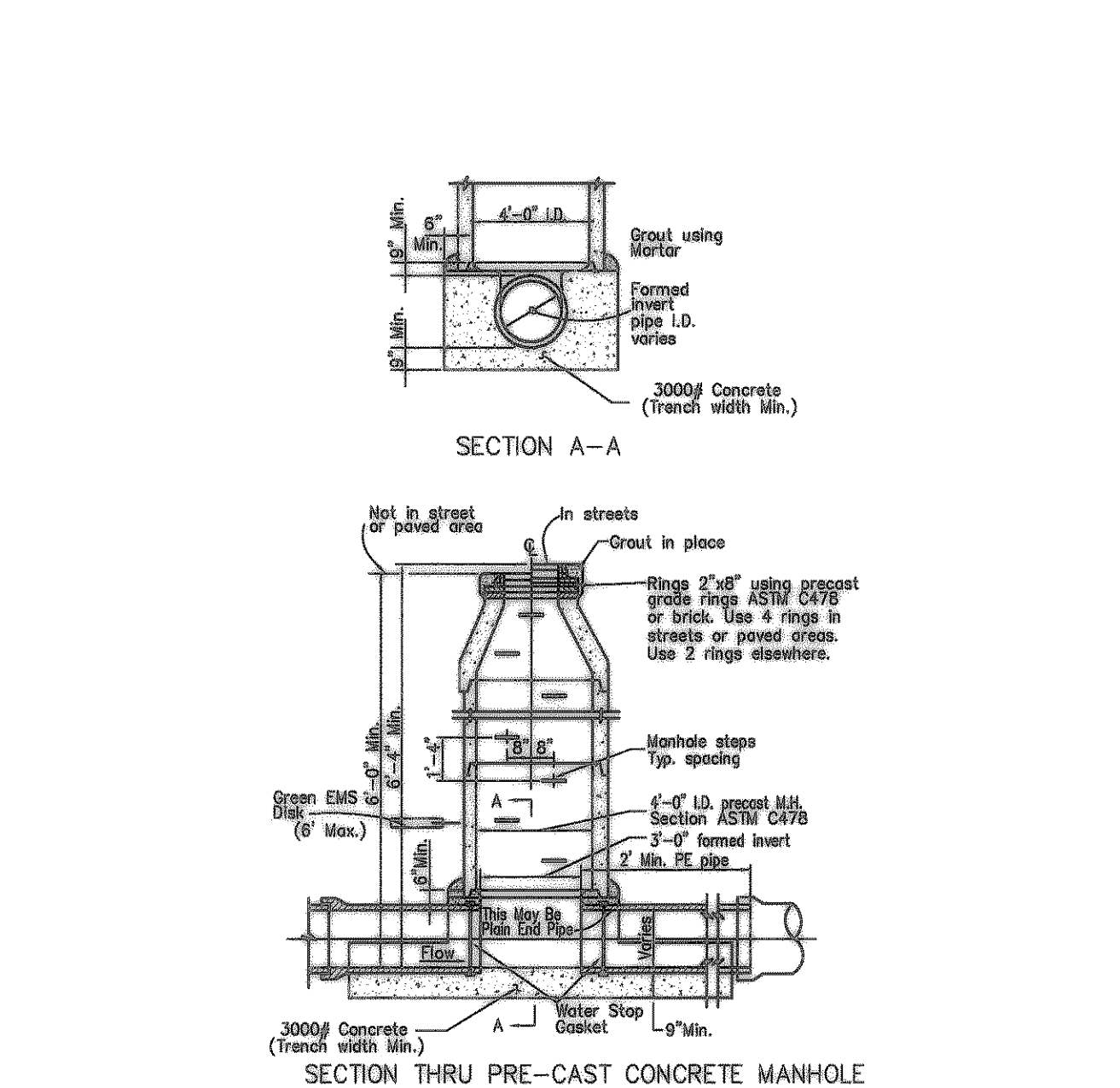


40 DETAIL
NO SCALE

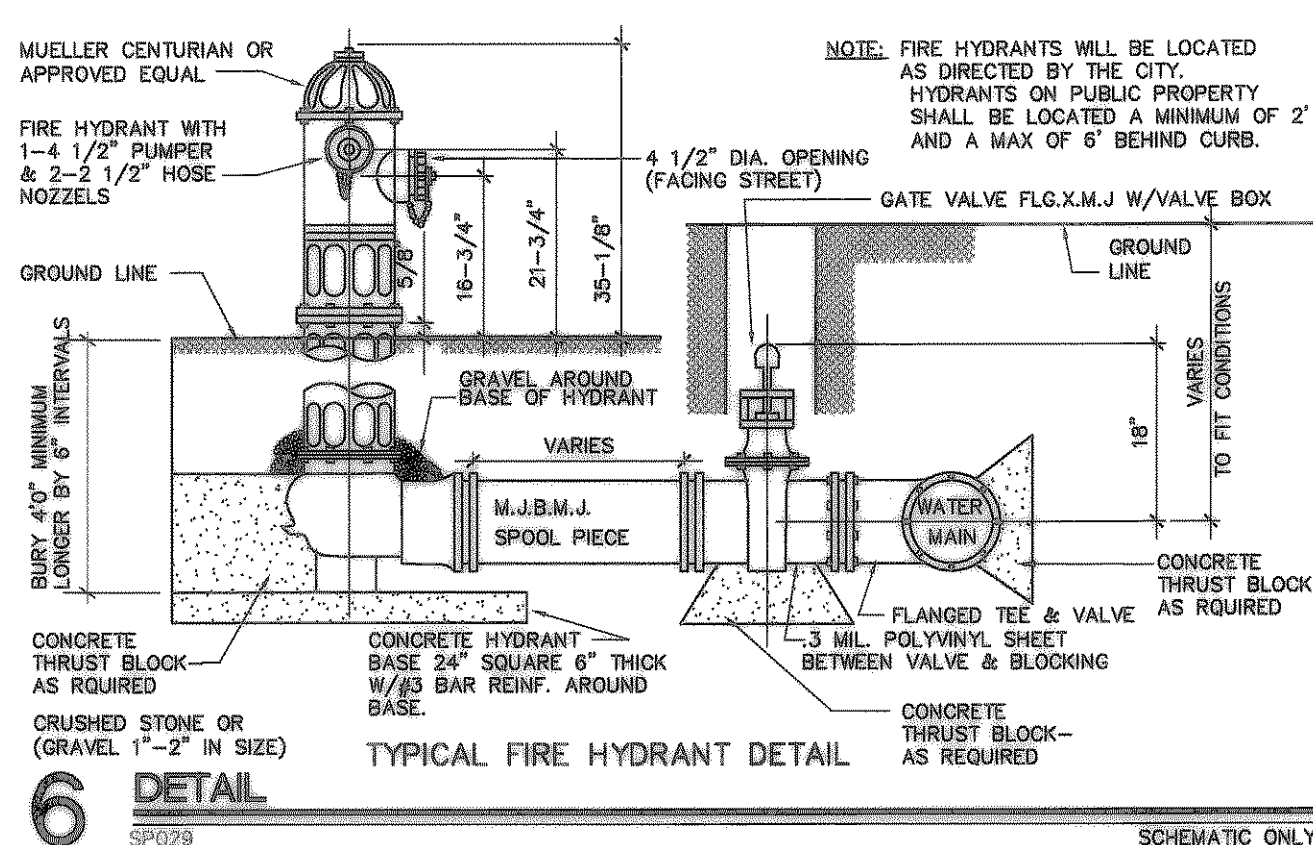
30 DETAIL
SCALE: 1/2" = 1'-0"



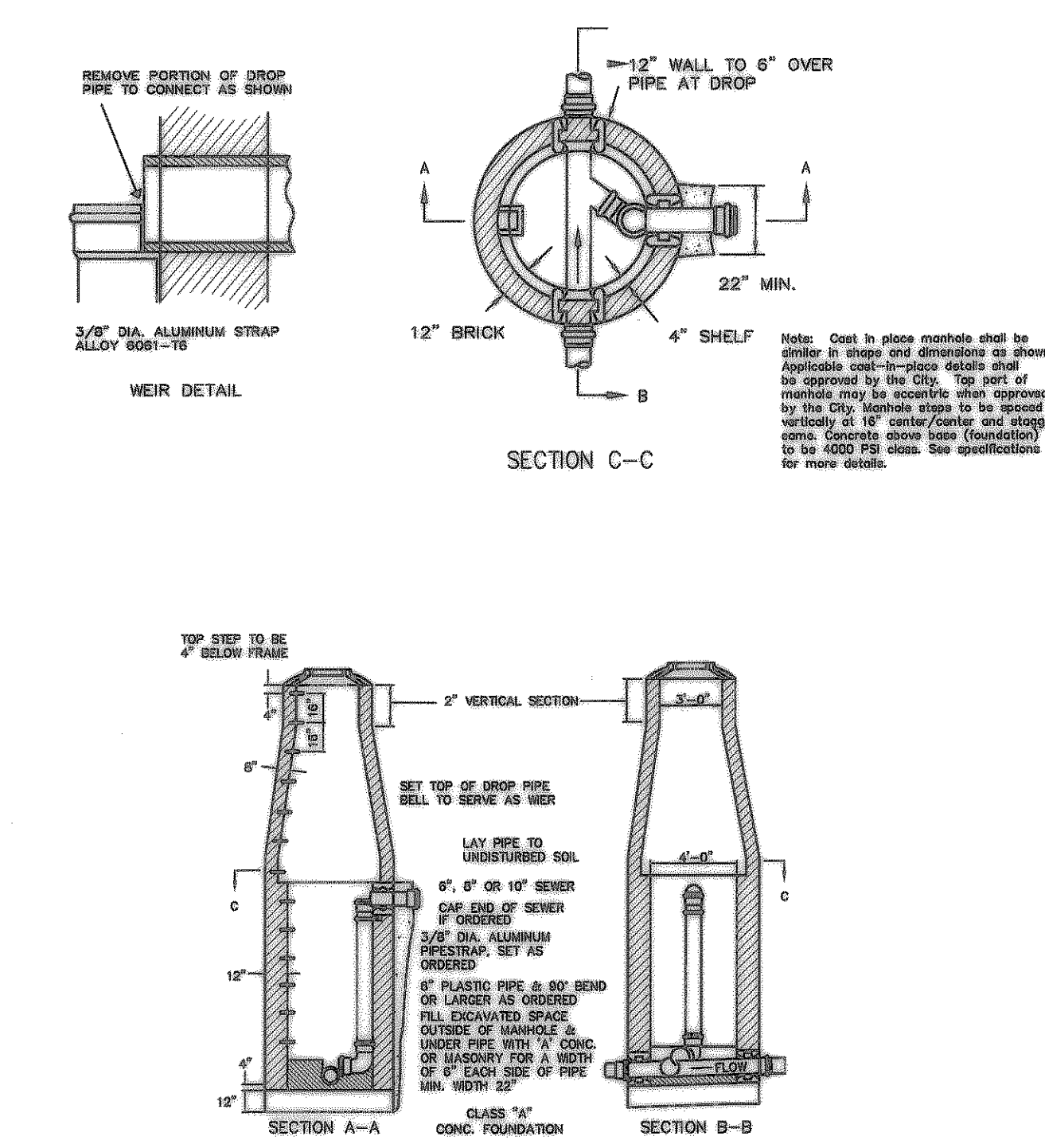
20 PIPE INSTALLATION DETAILS
NOT TO SCALE



10 CONCRETE MANHOLE DETAIL
NOT TO SCALE



6 DETAIL
SP029 SCHEMATIC ONLY



REGISTERED ARCHITECT
STATE OF TEXAS
S.P. DAUGHTRY
60172

REGISTERED PROFESSIONAL ENGINEER
STATE OF TEXAS
S.P. DAUGHTRY
60172

2825-74th ST.
LUBBOCK, TEXAS 79423

PH (806) 745-1103
FAX (806) 745-1125

ALLIED ASSOCIATES
CONSULTING ENGINEERS

STRUCTURAL • MECHANICAL • ELECTRICAL

ROCKWALL FORD - MERCURY

ROCKWALL, TX.

PROJECT NO. F88-0201
DATE: 09/14/98

REVISIONS:

SHEET NO.
2.13