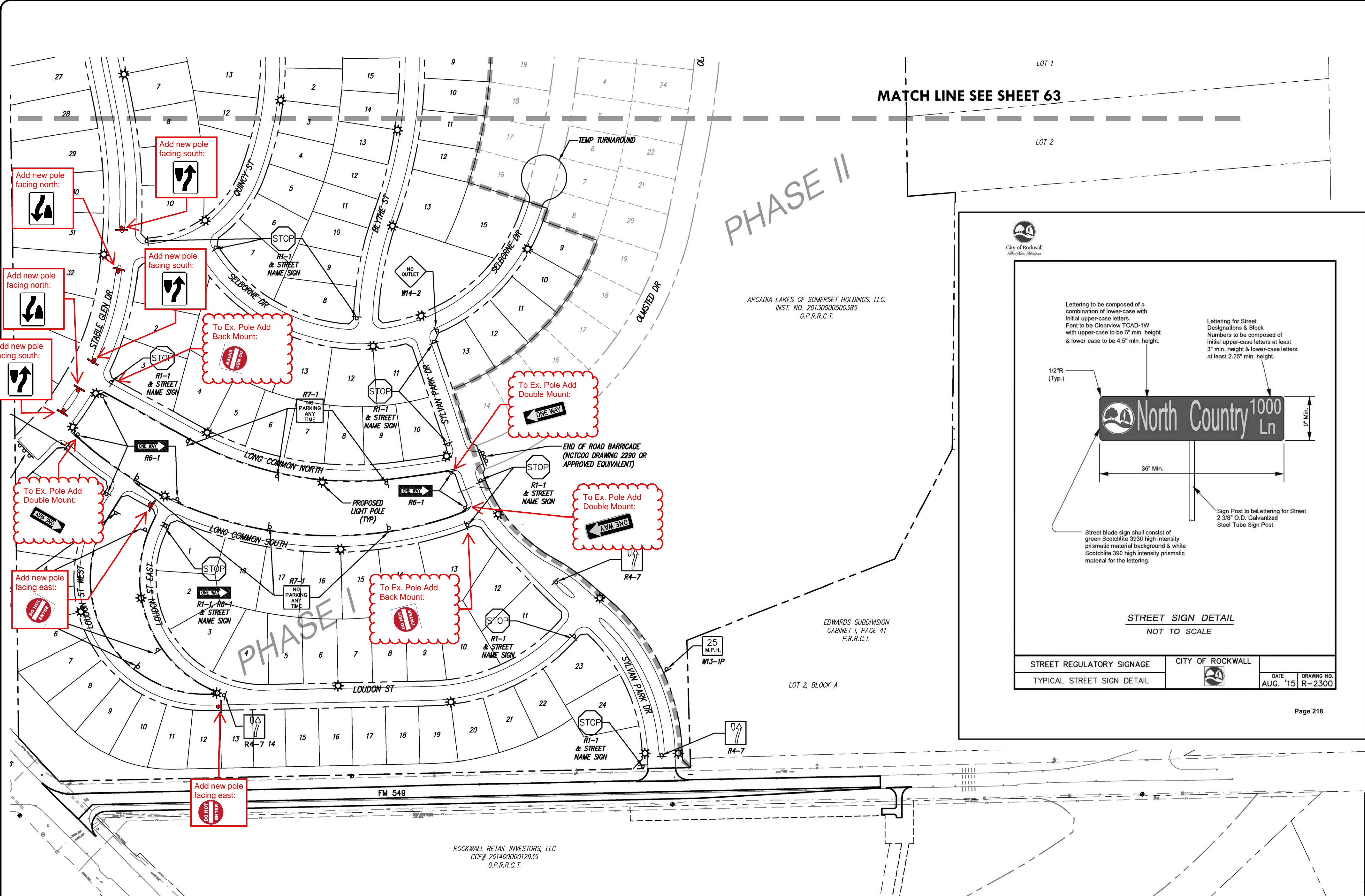


Drawing: C:\PROJECTS\ACD14208\dwg\sheet\62-63 Street Sign Layout.dwg dt. Jan 10, 2018 2:37pm by Chris O. Layout: Layout Date: 2/13/2018 1:53:15 PM - FINAL - BOUNDARY.dwg - x3d-Drainage Base.dwg - x3d-Paving Base.dwg - x3d-Utility Base.dwg - x3d-TDOT Base.dwg



100 0 50 100

GRAPHIC SCALE

UTILITY NOTE

THE UTILITIES SHOWN ON THE PLANS WERE COMPILED FROM VARIOUS SOURCES & ARE INTENDED TO SHOW THE GENERAL EXISTENCE & LOCATION OF UTILITIES IN THE AREA OF CONSTRUCTION. THE ENGINEER ASSUMES NO RESPONSIBILITY FOR THE ACCURACY OF THE UTILITY INFORMATION SHOWN ON THE PLANS. THE CONTRACTOR SHALL VERIFY THE EXACT LOCATION OF ALL UTILITIES PRIOR TO CONSTRUCTION. THE CONTRACTOR SHALL CONTACT UTILITY COMPANIES 48 HOURS IN ADVANCE OF ANY CONSTRUCTION ACTIVITIES IN ORDER TO DETERMINE IF THERE IS ANY CONFLICT WITH THE PROPOSED FACILITIES. THE CONTRACTOR SHALL NOTIFY THE ENGINEER IMMEDIATELY WHEN CONFLICTS WITH EXISTING UTILITIES ARE DISCOVERED.

LEGEND

PROPOSED SIGN (AS NOTED)

PROPOSED STREET LIGHT

NOTES

- STREET SIGN POST, CENTER TO BE LOCATED 1.5 FOOT OFF THE BACK OF CURB.
- BLOCK NUMBERS ARE REQUIRED ON ALL STREET NAME BLADES.
- ALL SIGNAGE INSTALLED SHALL COMPLY WITH THE CURRENT TEXAS MANUAL ON UNIFORM TRAFFIC CONTROL DEVICES AND THE STANDARD HIGHWAY SIGN DESIGNS FOR TEXAS.
- THE DEVELOPER SHALL BE RESPONSIBLE FOR FURNISHING AND INSTALLING ALL REGULATORY WARNING AND STREET NAME SIGNS AND SIGN MOUNTS IN ACCORDANCE WITH THE APPROVED ENGINEERING PLANS.
- STREET NAME BLADES SHALL BE NINE INCH TALL EXTRUDED ALUMINUM. THE BLADES SHALL BE .008 INCHES THICK.
- HIGH INTENSITY RETROREFLECTIVE SHEETING FOR STREET AND REGULATORY AND WARNING SIGNS SHALL BE HIGH INTENSITY DIAMOND GRADE TYPE III PRISMATIC.
- THE LETTERING FOR STREET NAME BLADES SHALL BE COMPOSED OF A COMBINATION OF LOWER CASE LETTERS WITH INITIAL UPPER-CASE LETTERS. THE CLEARVIEW TCAD-1W FONT SHALL BE USED. THE LETTERING SHALL BE COMPOSED OF INITIAL UPPER-CASE LETTERS OF AT LEAST 6 INCHES IN HEIGHT AND LOWER CASE LETTERS OF AT LEAST 4.5 INCHES IN HEIGHT. FOR SUPPLEMENTARY LETTERING TO INDICATE THE TYPE OF STREET (SUCH AS STREET, AVENUE OR ROAD) SHALL BE COMPOSED OF INITIAL UPPER-CASE LETTERS AT LEAST 3-INCHES IN HEIGHT AND LOWER-CASE LETTERS AT LEAST 2.25 INCHES IN HEIGHT. ABBREVIATIONS MAY BE USED (FOR EXAMPLE ST., AVE., OR RD) EXCEPT THE STREET NAME ITSELF. THE SUPPLEMENTARY LETTERING SHALL BE LOCATED AT THE LOWER RIGHT CORNER OF THE STREET BLADE, UNDER THE BLOCK NUMBER.
- THE STREET BACKGROUND SHALL BE GREEN AND THE LEGEND SHALL BE WHITE.
- STREET BLADE MUST INCORPORATE THE CURRENT CITY OF ROCKWALL LOGO.
- FOR A STREET WITH ONLY A CUL-DE-SAC END, A STANDARD W 14-2A SHALL BE MOUNTED OVER THE STREET NAME BLADE.

City of Rockwall
The New Horizon

Lettering to be composed of a combination of lower-case with initial upper-case letters.
Font to be Clearview TCAD-1W with upper-case to be 6" min. height & lower-case to be 4.5" min. height.

Lettering for Street Designations & Block Numbers to be composed of initial upper-case letters at least 3" min. height & lower-case letters at least 2.25" min. height.

1/2"R (Typ.)

36" Min.

9" Min.

Street blade sign shall consist of green Scotchlite 3930 high intensity prismatic material background & white Scotchlite 390 high intensity prismatic material for the lettering.

Sign Post to be lettering for Street 2 3/8" O.D. Galvanized Steel Tube Sign Post

STREET SIGN DETAIL
NOT TO SCALE

STREET REGULATORY SIGNAGE	CITY OF ROCKWALL
TYPICAL STREET SIGN DETAIL	

DATE AUG. '15	DRAWING NO. R-2300
------------------	-----------------------

Page 218

RECORD DRAWING

TO THE BEST OF OUR KNOWLEDGE TEAGUE NALL & PERKINS, INC. HEREBY STATES THAT THIS PLAN IS AS-BUILT. THIS INFORMATION PROVIDED IS BASED ON SURVEYING AT THE SITE AND INFORMATION PROVIDED BY THE CONTRACTOR.

DATE: 1/08/2018

no.	revision	by	date



scale
horiz 1"=100'
vert n/a
date FEB 2017



teague nall & perkins
1100 Macon Street
Fort Worth, Texas 76102
817.336.5773 ph 817.336.2813 fx
TBPE Registration No. F-230
www.tnpinc.com

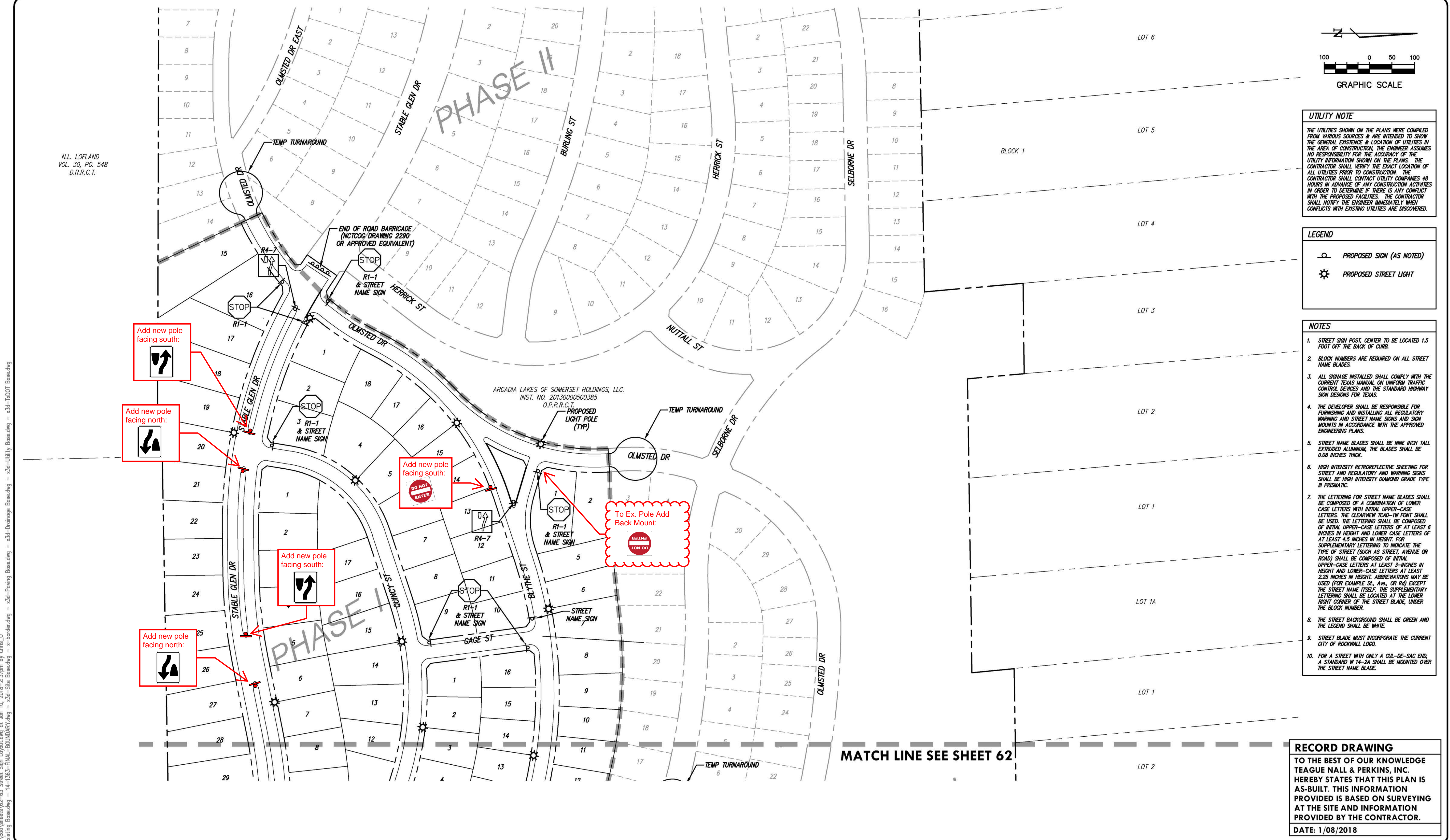


City of Rockwall, Texas

Construction Plans for
Somerset Park, Phase 1

Street Light and Sign Layout (1 of 2)

tnp project ACD 14208
sheet 62 of 77



Drawing: C:\PROJECTS\ACD14208\Drawings\Sheet\62-63 Street Sign Layout.dwg at Jan 10, 2018 2:37pm by Chris O
Layout: Layout2
Refer: ACD-Utility Base.dwg - x3d-Utility Base.dwg - x3d-Drainage Base.dwg - x3d-Paving Base.dwg - x3d-FINAL-BOUNDARY.dwg - ACD-Existing Base.dwg - 14-155-FINAL-BOUNDARY.dwg

no.	revision	by	date



scale
horiz
1"=100'
vert
n/a
date
FEB 2017



teague nall & perkins
1100 Macon Street
Fort Worth, Texas 76102
817.336.5773 ph 817.336.2813 fx
TBPE Registration No. F-230
www.tnpinc.com



City of Rockwall, Texas
Construction Plans for
Somerset Park, Phase 1
Street Light and Sign Layout (2 of 2)

tnp project
ACD 14208
sheet
63
of
77