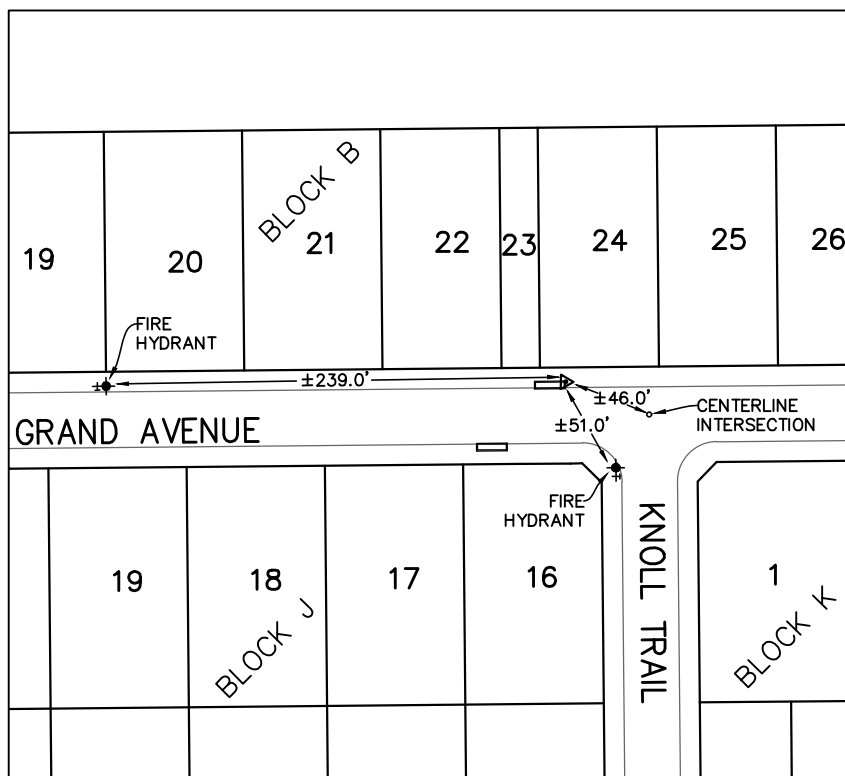
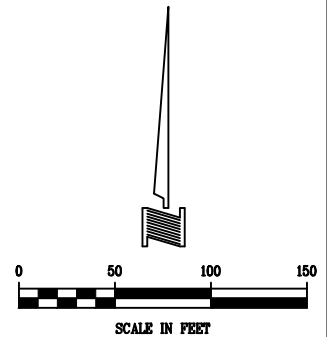


GEODETIC MONUMENT DESCRIPTION FORM



POINT NO.:	RW-5
PROJECT NAME:	TERRACES PHASE 2
COORDINATE ZONE:	TEXAS NORTH CENTRAL ZONE 4202 NAD83/NAVD88
GRID COORDINATES:	X: 2,603,226.0820' Y: 7,031,939.4890'
LATITUDE:	N 32° 56' 31.6149"
LONGITUDE:	W 96° 25' 50.7976"
ORTHOMETRIC ELEVATION:	573.571'
ELEVATION DATUM:	NAVD88
COMBINED SCALE FACTOR:	0.999853886
JVC JOB NO.:	2215B
DATE:	AUGUST 5, 2025

MONUMENT IS A 3.00" DIAMETER DOMED ALUMINUM CAP STAMPED "CITY OF ROCKWALL SURVEY MONUMENT" SET ON A CURB INLET LOCATED ON THE NORTH SIDE OF GRAND AVENUE APPROXIMATELY 46' NORTHWEST OF THE CENTERLINE INTERSECTION OF KNOLL TRAIL AND GRAND AVENUE. THE MONUMENT IS LOCATED APPROXIMATELY 51' NORTHWEST OF A FIRE HYDRANT AND 239' EAST OF A FIRE HYDRANT.

NOTE: SURVEY IS BASED ON GPS OBSERVATIONS BY USING THE ALLTERRA CENTRAL, INC. VRS NETWORK SURROUNDING THE DALLAS-FORT WORTH METROPLEX. HEIGHTS SHOWN HEREON ARE BASED ON GPS OBSERVATIONS ONLY USING GEOID 03 (CONUS).



TBPELS: Engineering Firm No. 11962 / Land Surveying Firm No. 10194033
704 Central Parkway East | Suite 1200 | Plano, TX 75074 | 972.201.3100