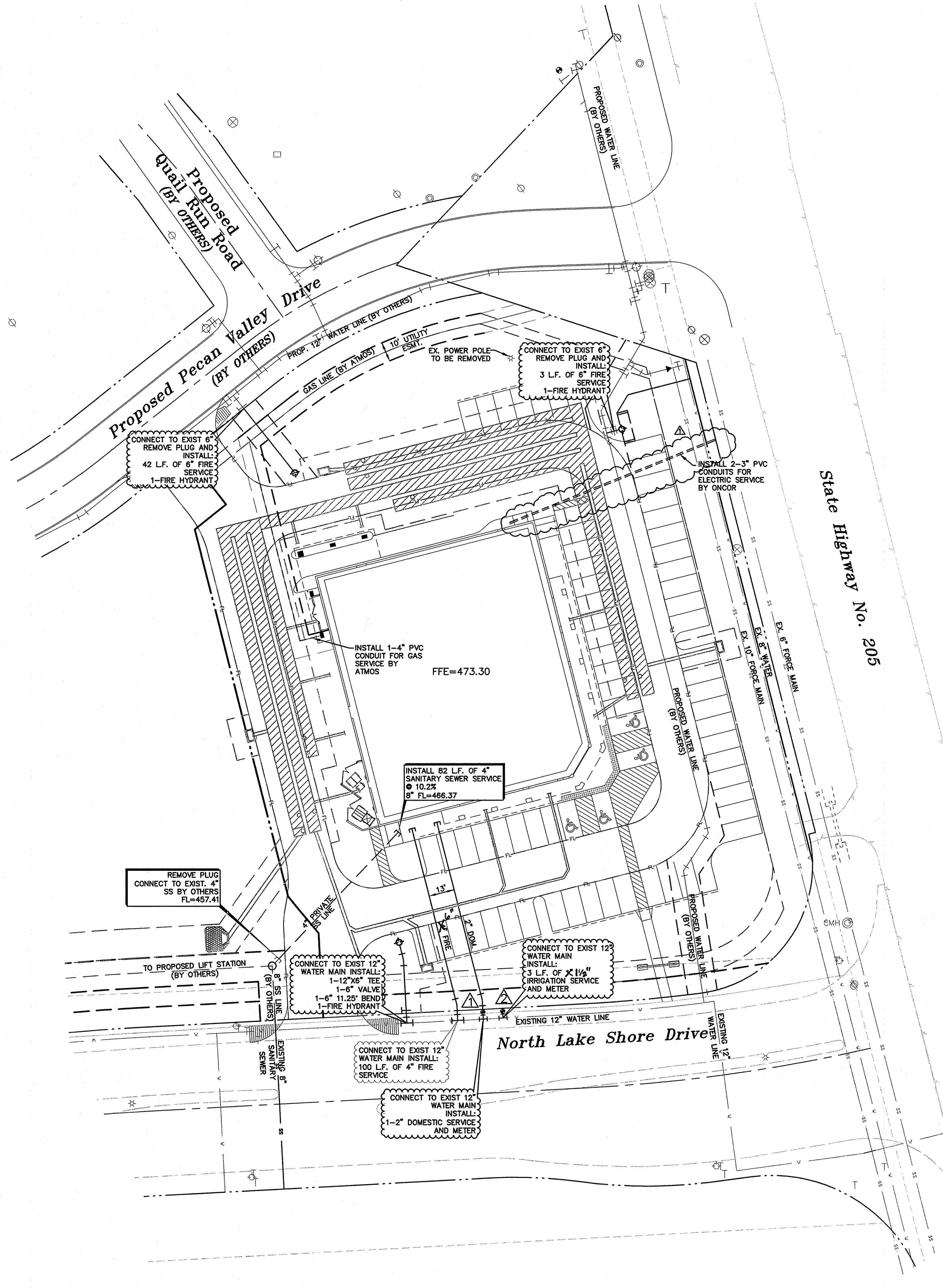
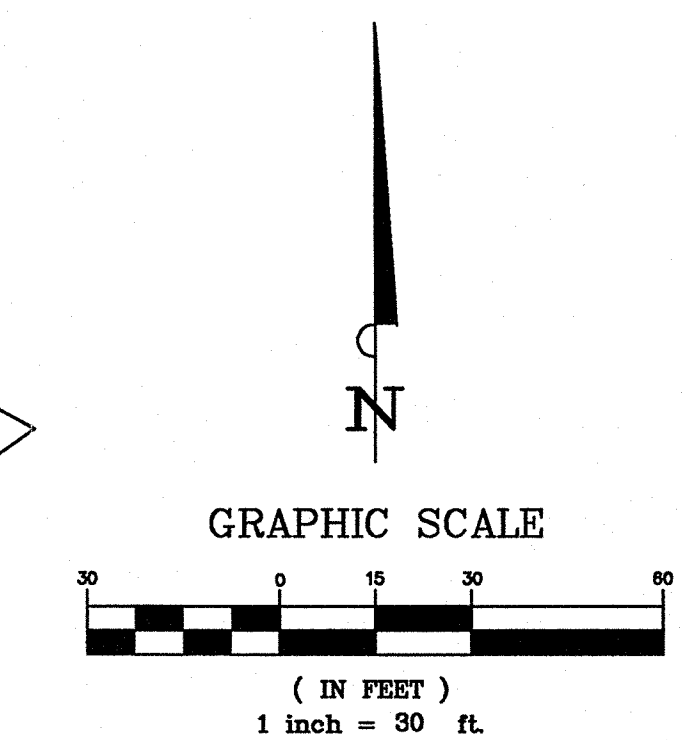


WALGREENS
STORE NUMBER 11519
PROJECT TYPE
DRAWINGS/SPECIFICATIONS BY:
WALGREENS
LANDLORD'S CONSULTANT
ALL CONSTRUCTION WORK, UNLESS NOTED OTHERWISE, BY:
WALGREENS' CONTRACTOR
LANDLORD'S CONTRACTOR (TURNKEY CONSTRUCTION)
STORE BUILDING
NEW
REMODELING
RELOCATION
OTHERS
NEW
EXISTING
NEW SHELL ONLY
2007 CRITERIA CONSTRUCTION BULLETINS
C.B. # TITLE
a Development of
CAM LAKESHORE, L.P.
5005 LBJ Fwy, Suite 840
Dallas, TX 75244
Tel. (972) 331-2050 Fax (972) 331-0020
LEVINSON · ALCOSER
ASSOCIATES, L.P.
1177 W. Loop South, Suite 900 Houston, Texas 77027
tel 713.787.0000 fax 713.850.8250
ARCHITECTURE PLANNING INTERIOR DESIGN
NO. DATE BY DESCRIPTION CONST
REVISIONS
CERTIFICATION AND SEAL
I HEREBY CERTIFY THAT THIS PLAN AND SPECIFICATION WAS PREPARED BY ME OR UNDER MY DIRECT SUPERVISION AND THAT I AM A DULY REGISTERED ARCHITECT OR ENGINEER UNDER THE LAWS OF THE STATE OF TEXAS AS SIGNIFIED BY MY HAND AND SEAL.
PROJECT NO. 26332.000
N. Lakeshore Dr. & Hwy 205
Rockwall, TX
DRAWING TITLE
UTILITY PLAN
BUILDING PERMIT REVIEW: SCALE: AS NOTED DRAWING NO.
ADA / TAS
EAS #
A8804095
BID/PRICING
SET:
01-15-08
CONSTRUCTION SET:
DRAWN BY: K.F.D.
REVIEWED BY: D.K.K.
ISSUE DATE: 12-21-07
OF 15 DWGS.



THE CONTRACTOR SHALL FIELD VERIFY THE HORIZONTAL AND VERTICAL LOCATIONS OF ALL EXISTING UTILITIES PRIOR TO START OF CONSTRUCTION AND SHALL NOTIFY THE CONSTRUCTION MANAGER AND ENGINEER OF ANY CONFLICTS DISCOVERED. CONTRACTOR IS RESPONSIBLE FOR PROTECTING EXISTING UTILITIES (SHOWN OR NOT SHOWN) WITHIN SCOPE OF CONSTRUCTION. IF ANY EXISTING UTILITIES ARE DAMAGED, THE CONTRACTOR SHALL REPLACE THEM AT HIS OWN EXPENSE. CALL 1-800-DIG-TESS AT LEAST 72 HOURS PRIOR TO COMMENCING CONSTRUCTION IN VICINITY.



LEGEND	
	EX. WATER
	EXISTING FIRE HYDRANT
	PROP. WATER
	PROP. WATER BY OTHERS
	PROP. FIRE ASSEMBLY
	EX. SANITARY SEWER
	PROP. SANITARY SEWER
	EX. STORM SEWER
	PROP. STORM SEWER
	PROPOSED SANITARY LATERAL

- NOTE:
- SEE MEP PLANS FOR ALL UTILITY CONNECTIONS INTO BUILDING.
 - WATER AND SEWER LINES STUB 5 FEET FROM BUILDING FOR SERVICE CONNECTIONS UNLESS OTHERWISE NOTED.
 - ALL METERS SHALL HAVE BACKFLOW PREVENTION AND A DOUBLE DETECTOR CHECK ASSEMBLY.
 - ALL FIRELANES SHALL BE CONSTRUCTED PER CITY OF ROCKWALL SPECIFICATIONS.
 - A 5-FOOT CLEARANCE SHALL BE MAINTAINED AROUND ALL FIRE HYDRANTS.
 - THE FIRE PROTECTION CONTRACTOR SHALL INSTALL A REMOTE FIRE DEPARTMENT CONNECTION WITH CLEAR AND UNOBSTRUCTED ACCESS. LOCATION FOR THIS SHALL BE COORDINATED WITH THE OWNERS REPRESENTATIVE.
 - UNLESS OTHERWISE NOTED, ALL MATERIALS AND CONSTRUCTION SHALL CONFORM TO APPLICABLE SPECIFICATIONS OF THE CITY OF ROCKWALL, WITH AMENDMENTS, THE NORTH CENTRAL COUNCIL OF GOVERNMENTS "STANDARD SPECIFICATIONS FOR PUBLIC WORKS CONSTRUCTION" PARTS II AND III, LATEST EDITION.

NOTE
CONTRACTOR TO ADJUST MANHOLE RIM ELEVATIONS TO FINISHED GRADE.

WATER METER SCHEDULE		
ID	TYPE	SIZE
	DOMESTIC	2"
	IRRIGATION	1"

STOP!
CALL BEFORE YOU DIG
DIG TESS
1-800-DIG-TESS
(at least 72 hours prior to digging)

EXISTING UTILITIES WERE OBTAINED FROM RECORD DRAWINGS OBTAINED AT THE CITY OF ROCKWALL RECORDS. THE CONTRACTOR SHALL VERIFY THE EXACT LOCATION OF EXISTING UTILITIES AND NOTIFY THE ENGINEER FOR ANY DISCREPANCIES WITH THIS PLAN.

RECORD DRAWING
THIS RECORD DRAWING HEREIN REFLECTS TO THE BEST OF THE DESIGN ENGINEER'S KNOWLEDGE, THE APPROXIMATE LOCATION OF THE CONSTRUCTED WORK, USING INFORMATION AS PROVIDED BY THE CONTRACTORS AND SURVEYED GRADES.

BENCHMARK:
ALUMINUM CAP FOUND IN CONCRETE LABELLED "FLOODWAY BOUNDARY" LOCATED ON THE SOUTHEAST SIDE OF N. LAKESHORE DRIVE, 72' SOUTHWEST FROM A PEDESTRIAN COLUMN ON SOUTHEAST END OF A BRIDGE, 23' EAST OF BACK OF CURB.
Elev. 470.06'
X-CUT IN CONCRETE LOCATED ON THE TOP OF CURB AT THE MID POINT OF A CURVE RETURN ON THE NORTH SIDE OF N. LAKESHORE DRIVE AT THE INTERSECTION WITH S.H. 205, 5' SOUTHEAST OF A POWER POLE.
Elev. 477.90'
X-CUT IN CONCRETE LOCATED AT THE INTERSECTION OF THE EAST R.O.W. LINE OF RANDOM OAKS DRIVE AND THE NORTH R.O.W. LINE OF QUAIL RUN ROAD, 53' NORTHEAST OF A POWER POLE ON THE SOUTH SIDE OF QUAIL RUN ROAD.
Elev. 471.31'