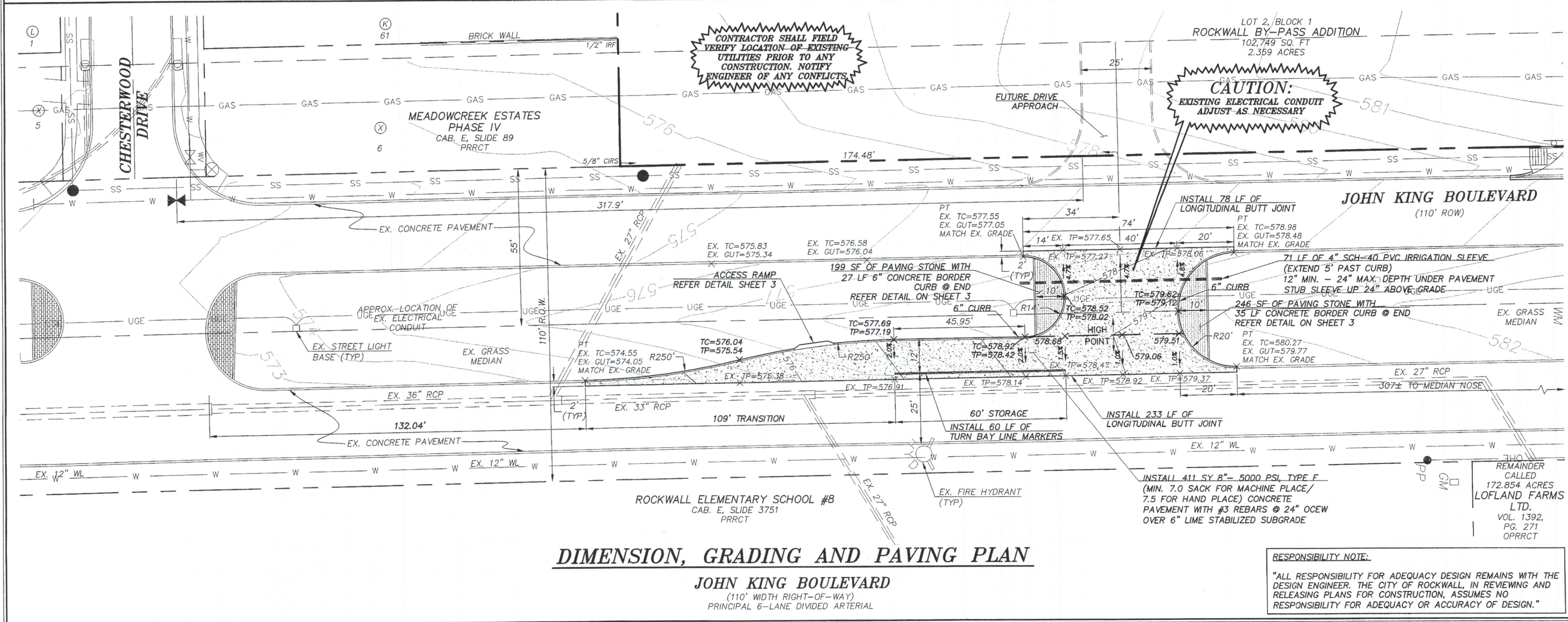


- LEGEND:**
- SAWCUT AND REMOVE CURB AND GUTTER
 - 8" CONCRETE PAVEMENT
 - EXISTING OVERHEAD ELECTRIC
 - EXISTING POWER POLE
 - EXISTING SANITARY SEWER MANHOLE
 - EXISTING LIGHT
 - EXISTING SIGN
 - EXISTING FIRE HYDRANT
 - EXISTING WATER VALVE
 - EXISTING RR SIGNAL LIGHT
 - PROPOSED SIGN
 - PROPOSED LIGHT

QUANTITIES SHOWN ARE APPROXIMATE AND SUBJECT TO CHANGE BASED ON ACTUAL FIELD CONDITIONS.

- NOTES:**
- ALL DIMENSIONS ARE TO BACK OF CURB AND/OR EDGE OF PAVEMENT UNLESS OTHERWISE NOTED.
 - SEE SHEET 3 FOR PAVING DETAILS AND NOTES.

**JOHN KING BOULEVARD
MEDIAN IMPROVEMENT
DEMOLITION, DIMENSION CONTROL, PAVING, AND
GRADING PLAN**



BENCHMARK:
BM NO. 1
CITY OF ROCKWALL R-19. BRASS MONUMENT AT THE NORTHWEST CORNER OF SILVERVIEW & DIAMOND WAY, ±500' SOUTH OF SH 276.
PUBLISHED NAVD88 ELEV: 600.69'

BM NO. 2
BOX CUT ON TOP OF THE WEST CURB LINE OF JOHN KING BOULEVARD, ON THE SOUTH CURB RETURN OF A DRIVEWAY, 615' SOUTH OF THE CENTERLINE OF SH 276, AND 19' NORTHEAST OF A 5/8" CAPPED IRON ROD STAMPED "MYCOSKIE MCINNIS".
ELEV: 581.15'

GENERAL UTILITY NOTES:
ALL EXISTING UTILITY DATA IS PROVIDED FOR INFORMATION ONLY. ALTHOUGH THIS DATA IS SHOWN AS ACCURATELY AS POSSIBLE, THE CONTRACTOR IS CAUTIONED THAT THE OWNER AND THE ENGINEER NEITHER ASSUMES NOR IMPLIES ANY RESPONSIBILITY FOR THE ACCURACY OF THIS DATA. IT SHALL BE THE CONTRACTOR'S RESPONSIBILITY TO CONTACT THE UTILITY AFFECTED AND VERIFY THESE LOCATIONS AND ELEVATIONS PRIOR TO CONSTRUCTION.

CALL 1-800-344-8377 (DIG-TESS) OR OTHER UTILITY LOCATING SERVICES 48 HOURS PRIOR TO CONSTRUCTION ACTIVITY. MYCOSKIE MCINNIS ASSOCIATES, INC. IS NOT RESPONSIBLE FOR KNOWING ALL EXISTING UTILITIES OR DEPICTING EXACT LOCATIONS OF UTILITIES ON DRAWINGS.

RESPONSIBILITY NOTE:
"ALL RESPONSIBILITY FOR ADEQUACY DESIGN REMAINS WITH THE DESIGN ENGINEER. THE CITY OF ROCKWALL, IN REVIEWING AND RELEASING PLANS FOR CONSTRUCTION, ASSUMES NO RESPONSIBILITY FOR ADEQUACY OR ACCURACY OF DESIGN."

PROJECT TITLE:
**JOHN KING BOULEVARD
MEDIAN IMPROVEMENT**

mimja
mycoskie+mcinnis+associates
civil engineering surveying landscape architecture planning
tpe registration number: 1 - 2759
200 east obrom
arlington, texas 76010
817-469-1671
817-274-8757
www.mmotexas.com

STATE OF TEXAS
ANDRES E. CASCO
Professional Engineer
No. 94938
Exp. 7-30-15

FOR REVIEW & PERMIT ONLY
PROJECT NUMBER: 2651-00-02
PROJECT MANAGER: J. SUMPTER
DRAWN BY: S. BELL
CHECKED BY: A. CASCO
ISSUE DATE: 03/20/2013

REV.	DATE	DESCRIP.	BY
SHEET CONTENT: DEMOLITION, DIMENSION, CONTROL, PAVING, AND GRADING PLAN			
SHEET NO: 2			
COPYRIGHT © 2013 MMA, INC.			