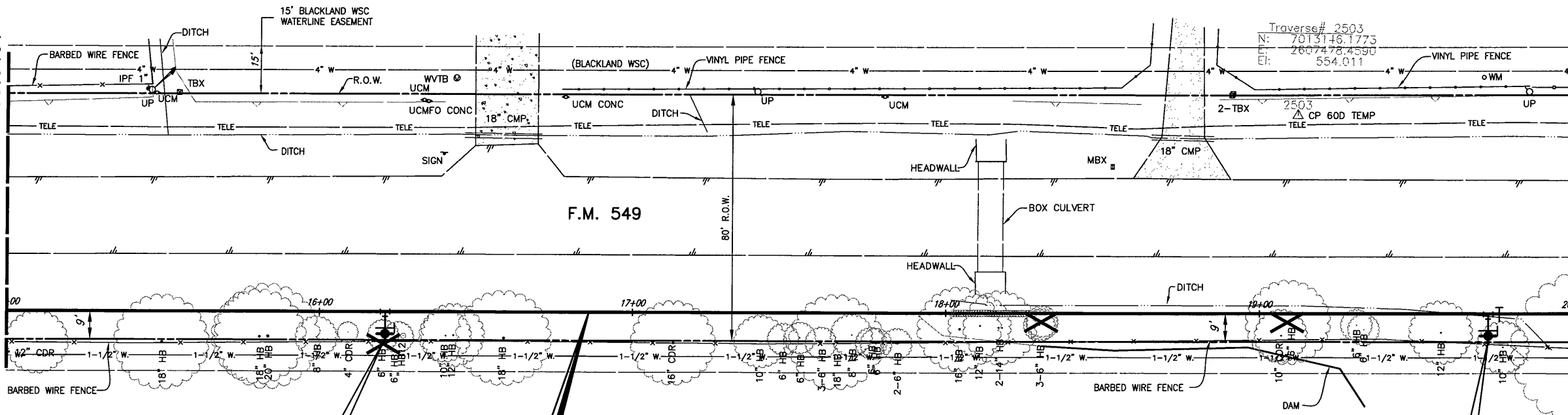


MATCH LINE STA. 15+00
N 7013557.1880 E 2607409.6401

MATCH LINE STA. 20+00
N 7013057.2427 E 2607417.0400



W.L. STA. 16+21
FURNISH & INSTALL
1-FIRE HYDRANT
1-12"x6" TEE
1-6" GATE VALVE
7 L.F. 6" PVC WATER LINE

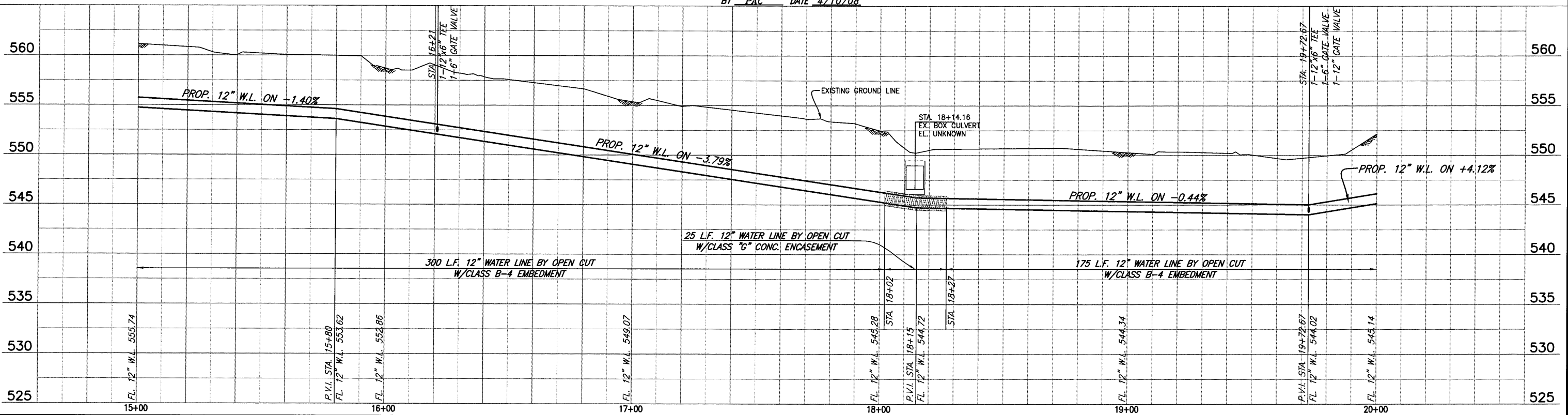
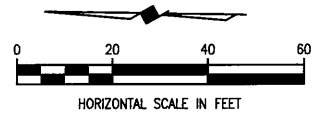
FURNISH & INSTALL
12" WATER LINE

W.L. STA. 19+72.67
FURNISH & INSTALL
1-FIRE HYDRANT
1-12"x6" TEE
1-6" GATE VALVE
1-12" GATE VALVE
7 L.F. 6" PVC WATER LINE

This record drawing is a compilation of the sealed engineering drawing for this project; modified by addenda, change orders and information furnished by the contractor. The information shown on the record drawings that was provided by the contractor or others not associated with the design engineer cannot be verified for accuracy or completeness. This original sealed drawings are on file at the offices of Birkhoff, Hendricks & Conway, L.L.P.

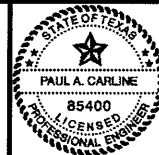
CAUTION!!
BLACKLAND WSC WATER LINES IN AREA. CONTACT BLACKLAND WSC FOR LOCATES PRIOR TO CONSTRUCTION.

BY PAC DATE 4/10/08



These plans and related specifications were prepared for construction of this specific project only. Reuse of these documents is not permitted without written authorization of Birkhoff, Hendricks, & Conway, L.L.P.

BIRKHOFF, HENDRICKS & CONWAY, L.L.P.
CONSULTING ENGINEERS
7502 Greenville Ave., Suite 220
Dallas, Texas
(214) 361-7900



THESE DOCUMENTS ARE FOR
BIDDING, CONSTRUCTION
AND PERMIT PURPOSES.
DATE: 6/12/07

CITY OF ROCKWALL, TEXAS
F. M. 549 WATER LINE
12" WATER LINE (LINE A)
PLAN-PROFILE
STA. 15+00 TO STA. 20+00

BHC
PROJECT NO.
2006-150
June, 2007

SHEET NO.
5