

NOTE:  
ALL FLOWS NOTED ARE  
FOR 100 YEAR STORM

LEGEND

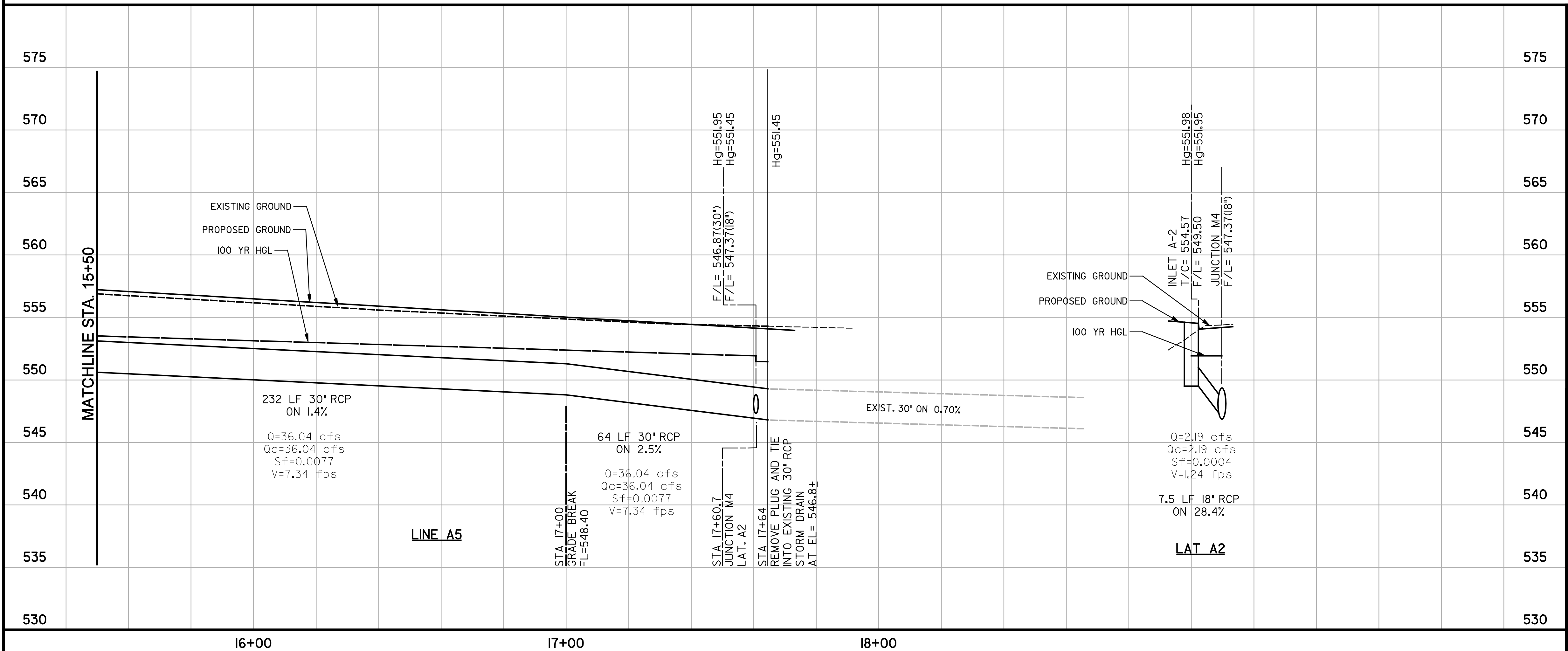
- CURB INLET
- MANHOLE
- DRAINAGE FLOW
- SPOT ELEV. (PROP.)

RECORD DRAWING

This drawing is a compilation of the original sealed engineering drawing and modifications by addenda, change orders and information furnished by the contractor. Information shown that was provided by the contractor and others not associated with the design engineer cannot be verified for accuracy or completeness. Original sealed drawing is on file at the office of AECOM Technical Services, Inc., TBPE REG. NO. F-3580

ORIGINAL DRAWING SEALED & SIGNED BY

T.H. Gaertner, P.E.  
TX NO. 37124



NO.	REVISION	BY	DATE

AIRPORT ROAD

STORM DRAIN PLAN & PROFILES  
STA. 15+50 TO STA. 20+00



AECOM TECHNICAL SERVICES, INC.  
18000 DALLAS PARKWAY, SUITE 350  
DALLAS TEXAS 75249  
WWW.AECOM.COM  
TBPE REG. NO. F-3580

Unit	PW-DAL	Scale	Horz AS SHOWN	Vert AS SHOWN	Date
Designed	SB	Checked	THG	Project No.	60004153
Drawn	FG	Approved	THG	Sheet	20 of 26

\\usda1\fp002\PM\4328\A\Report-Road\CADD\Sheet\A\Report-Road\_Record Drawings\_8-3-10\A20\_DPF\_02.dgn  
 8/7/2012