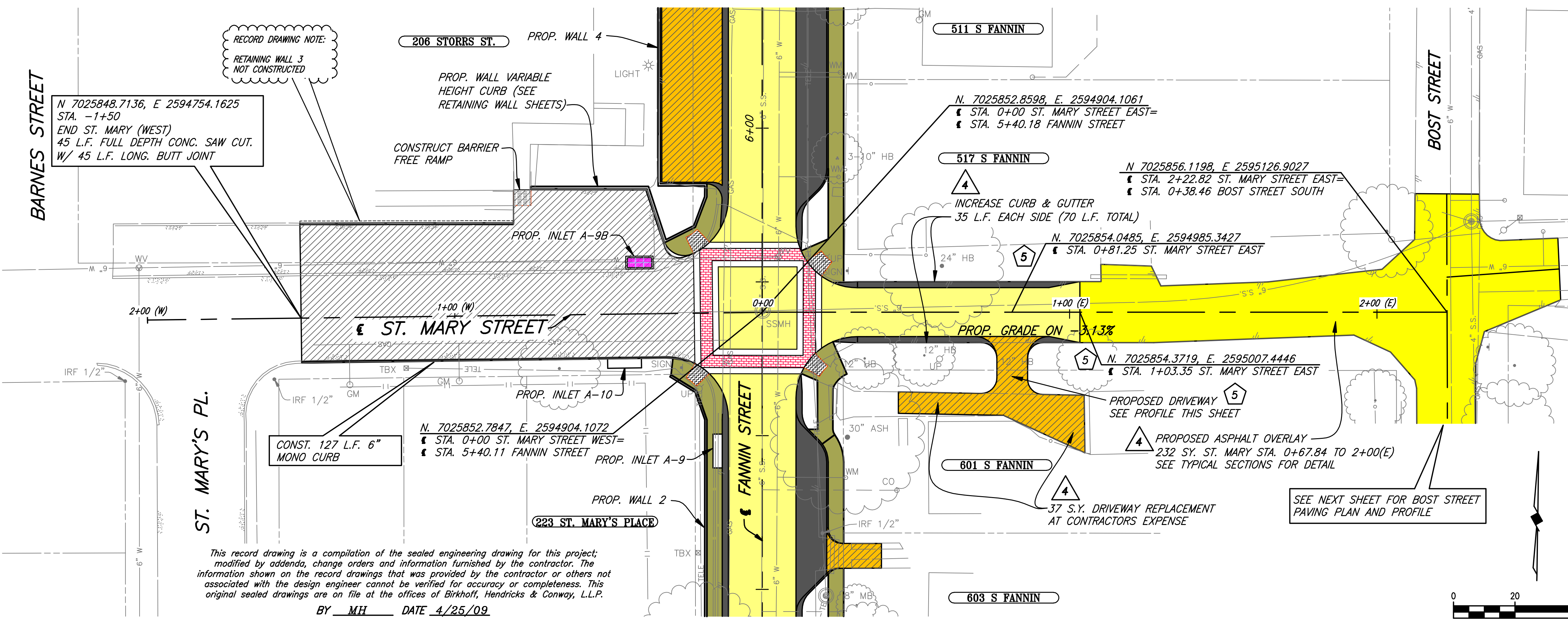


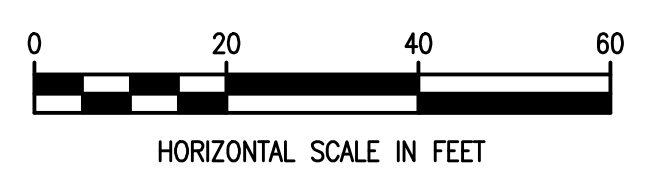
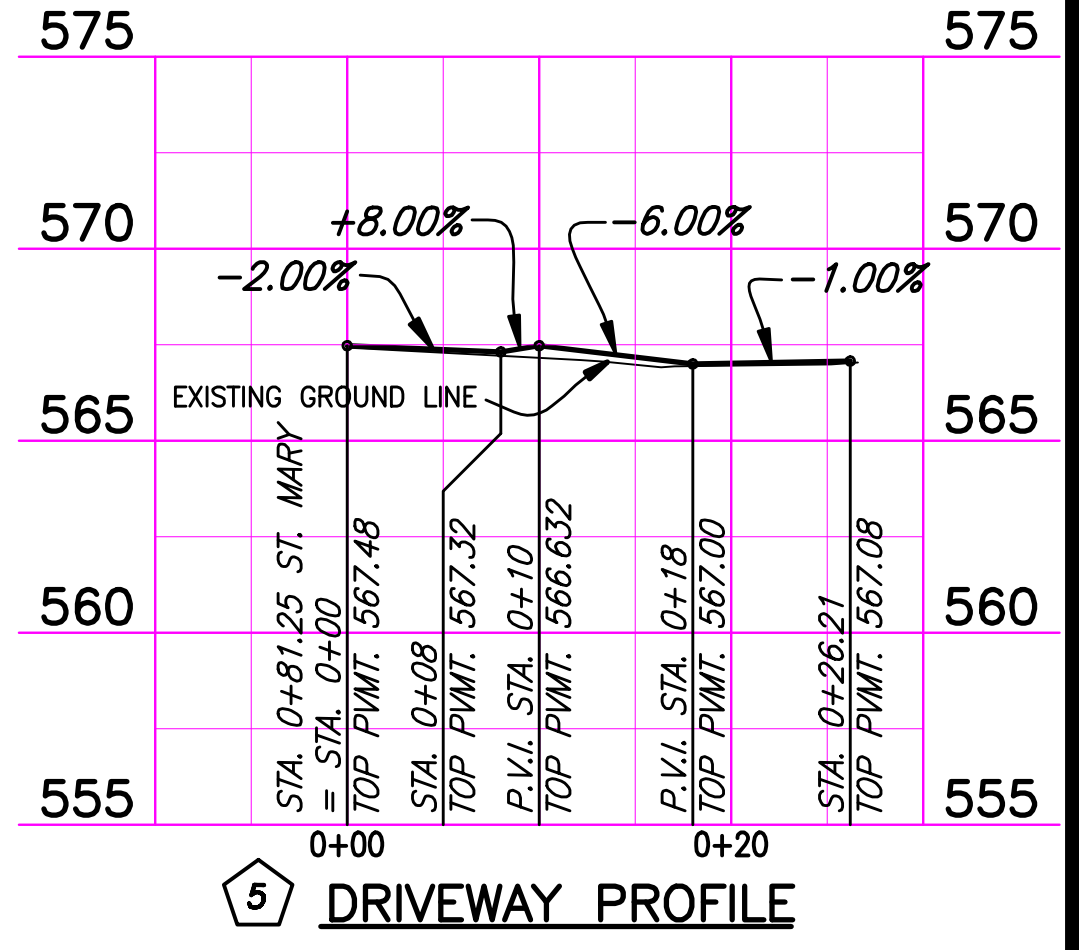
REVIS: 4/23/09 - GDAVIS  
C:\Acad\_Jobs\Rockwall\2005111\Sheets\2005111-017\_PP7.dwg  
PLOT STYLE: 22X34.ctb  
PLOT SCALE: 1:20  
PLOTTED BY: GDAVIS ON 4/30/2009



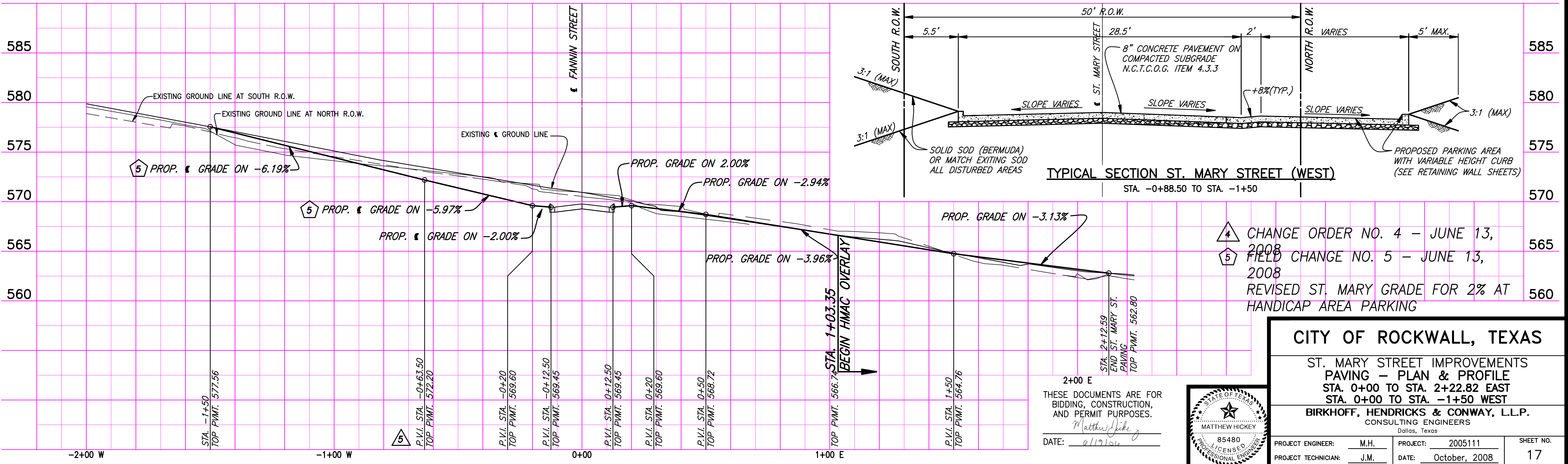
- CONSTRUCT H.M.A.C. PAVEMENT
- CONST. REINF. CONC. CURB & GUTTER OR CONCRETE PARKING NICHE W/ VALLEY GUTTER & MONO. CONC. CURB
- CONSTRUCT REINF. CONC. SIDEWALK
- CONSTRUCT H.M.A.C. TRANSITION
- CONSTRUCT BARRIER FREE RAMP
- CONSTRUCT BRICK PAVERS
- CONSTRUCT REINF. CONC. DRIVEWAY
- CONSTRUCT 8" REINF. CONC. P.V.M.T.
- PROPOSED TREE REMOVAL

This record drawing is a compilation of the sealed engineering drawing for this project, modified by addenda, change orders and information furnished by the contractor. The information shown on the record drawings that was provided by the contractor or others not associated with the design engineer cannot be verified for accuracy or completeness. This original sealed drawings are on file at the offices of Birkhoff, Hendricks & Conway, L.L.P.

BY MH DATE 4/25/09



These plans and related specifications were prepared for construction of this specific project only. Reuse of these documents is not permitted without written authorization of Birkhoff, Hendricks, & Conway, L.L.P.



**CITY OF ROCKWALL, TEXAS**

**ST. MARY STREET IMPROVEMENTS  
PAVING - PLAN & PROFILE  
STA. 0+00 TO STA. 2+22.82 EAST  
STA. 0+00 TO STA. -1+50 WEST**

**BIRKHOFF, HENDRICKS & CONWAY, L.L.P.**  
CONSULTING ENGINEERS  
Dallas, Texas

PROJECT ENGINEER: <u>M.H.</u>	PROJECT: <u>2005111</u>	SHEET NO. <u>17</u>
PROJECT TECHNICIAN: <u>J.M.</u>	DATE: <u>October, 2008</u>	