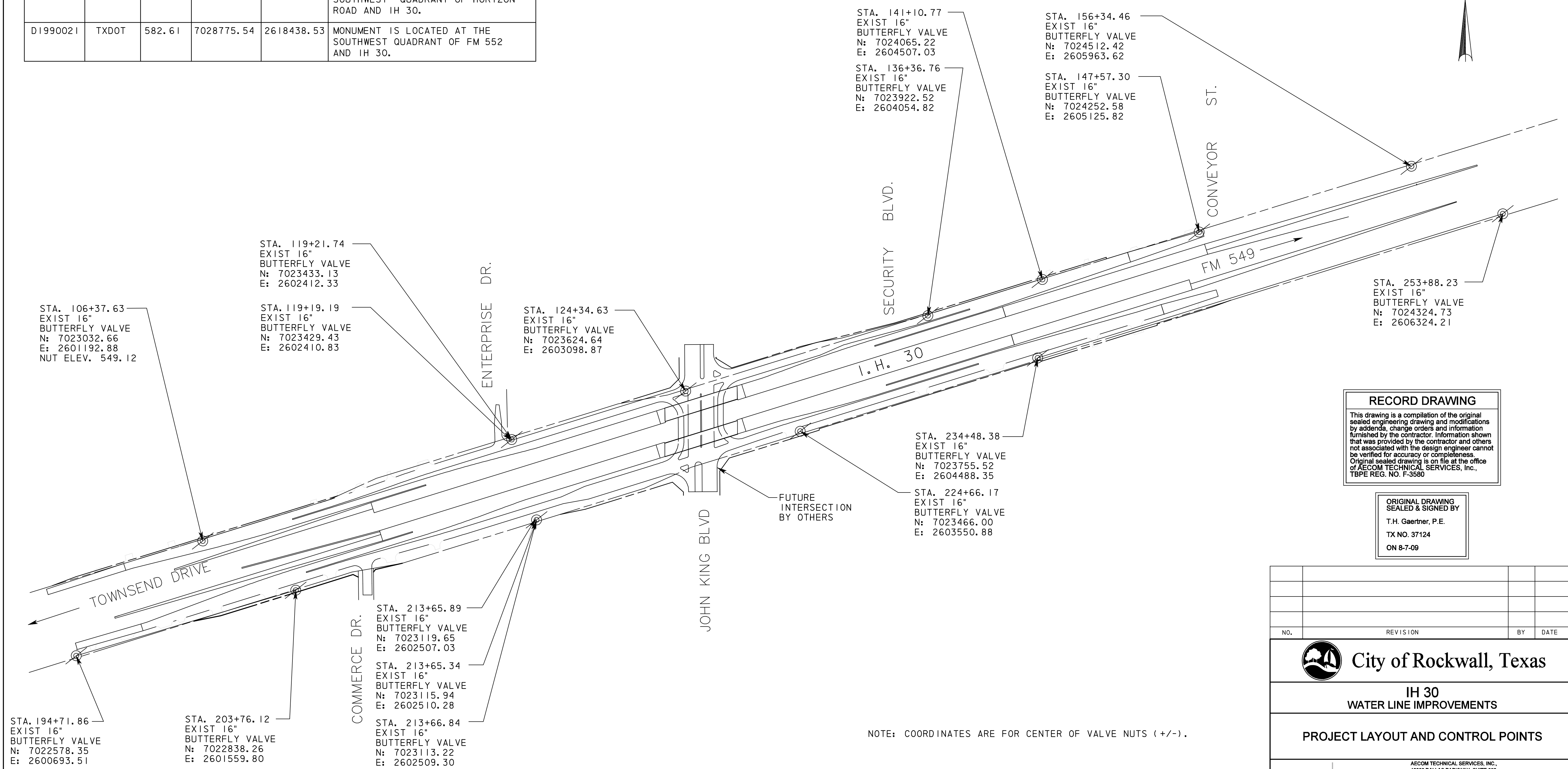
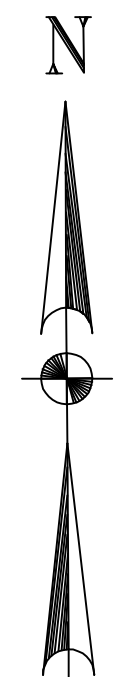



BENCHMARKS		MONUMENT DATA (GRID, COORDINATES)			
ID#	TYPE	ELEV	N	E	DESCRIPTION
R002	CITY OF ROCKWALL	609.394	7024007.53	2607194.15	MONUMENT IS LOCATED IN THE NORTH WESTERN CORNER OF FM 549 AND IH 30, 6.2 FEET WEST OF GUARD POST AND 8.4 FEET S 40° W OF GUARD POST.
R016	CITY OF ROCKWALL	558.719	7025942.54	2601204.03	MONUMENT IS LOCATED 97 FEET SOUTH OF THE APPROX CENTERLINE OF AIRPORT ROAD AND 42 FEET EAST OF WEST PARKING LOT CURB AND 68 FEET SOUTHWEST OF SIGN.
D1990011	TXDOT	558.981	7014471.49	2589892.73	MONUMENT IS LOCATED AT THE SOUTHWEST QUADRANT OF HORIZON ROAD AND IH 30.
D1990021	TXDOT	582.61	7028775.54	2618438.53	MONUMENT IS LOCATED AT THE SOUTHWEST QUADRANT OF FM 552 AND IH 30.



RECORD DRAWING
 This drawing is a compilation of the original sealed engineering drawing and modifications by addenda, change orders and information furnished by the contractor. Information shown that was provided by the contractor and others not associated with the design engineer cannot be verified for accuracy or completeness. Original sealed drawing is on file at the office of AECOM TECHNICAL SERVICES, Inc., TBPE REG. NO. F-3580

ORIGINAL DRAWING SEALED & SIGNED BY
 T.H. Gaertner, P.E.
 TX NO. 37124
 ON 8-7-09

NO.	REVISION	BY	DATE

 **City of Rockwall, Texas**

**IH 30
WATER LINE IMPROVEMENTS**

PROJECT LAYOUT AND CONTROL POINTS

AECOM AECOM TECHNICAL SERVICES, INC. 19000 DALLAS PARKWAY, SUITE 350 DALLAS, TEXAS 75248 WWW.AECOM.COM TBPE REG. NO. F-3580			
Unit	AECOM Water	Scale	Horz: AS SHOWN Vert: AS SHOWN
Designed	JR/RH	Checked	JR/TG
Drawn	RH/FG	Approved	GH
Date	11/4/2011	Project No.	60072620
Sheet	4	of	28

\\usd011\p002\p\Rockwall\IH30_U111\FY\CADD\Sheet\REC 10_26_11\Control-Points_REC10_26.dgn
 11/24/2011