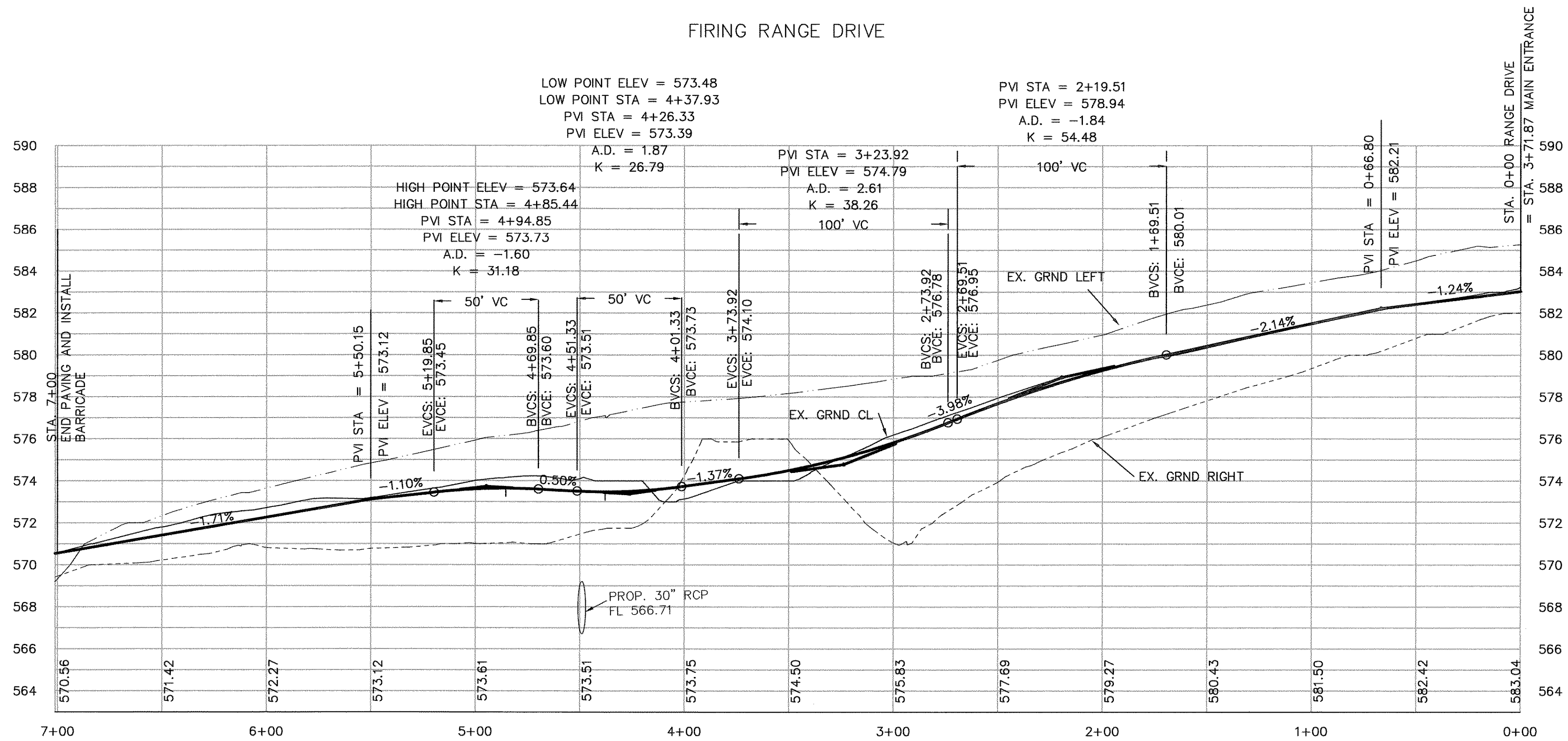


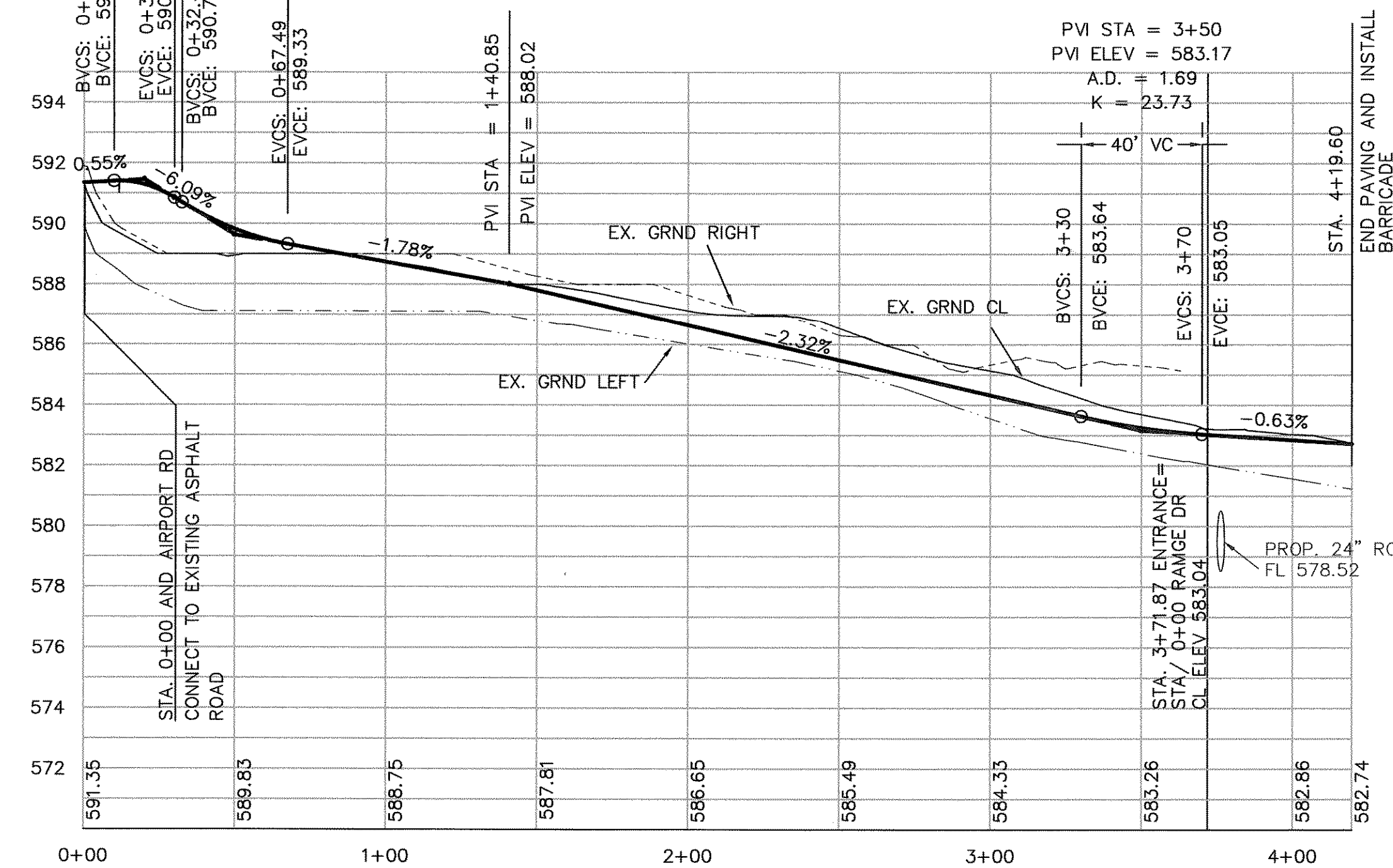
FIRING RANGE DRIVE



HIGH POINT ELEV = 591.41
 HIGH POINT STA = 0+11.68
 PVI STA = 0+20.01
 PVI ELEV = 591.46
 A.D. = -6.64
 K = 3.01

PVI STA = 0+49.99
 PVI ELEV = 589.64
 A.D. = 4.31
 K = 8.12

MAIN ENTRANCE

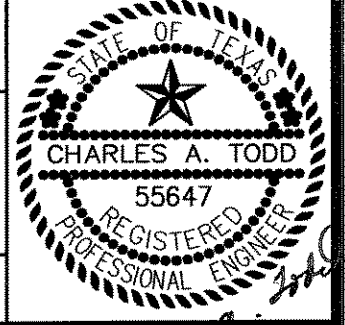


1" = 40' HORZ
 1" = 4' VERT

FIRING RANGE
 PAVING PROFILES
 ROCKWALL, TEXAS
 CITY OF ROCKWALL
 "THE NEW HORIZON"

REVISION NO.	REMARKS	DATE

DESIGNED: A.-J.W.	THE SEAL APPEARING ON THIS DOCUMENT WAS AUTHORIZED BY CHARLES A. TODD TEXAS P.E. NO. 55647 ON
DRAWN: ACAD	
JOB NO.	
DATE: 7/06	SHEET NO.



Charles A. Todd
 7-7-06