

CITY OF ROCKWALL, TEXAS

SQUABBLE CREEK LIFT STATION PERMANENT BYPASS PUMP CIP 2015-016

Operation and Maintenance Manual for **IO Points for Bypass Pump**

Birkhoff, Hendricks & Carter, L.L.P.

11910 Greenville Ave., Suite 600
Dallas, Texas 75243
(214) 361-7900

Heritage Constructors, Inc.

99 Collins Lane
Texarkana, Texas 75503
(903) 832-8001

H & H Electrical Contractors, Inc.

8475 County Road 271
Terrell, Texas 75160
(972) 524-0205

Changed wiring diagram

Wire 509 (Bypass pump, Pump running) changed to Spare.

Wire 510 (Bypass pump, Pump failure) changed to (Bypass Pump, General alarm).

Wire 511 (Bypass pump, Generator Running) changed to (Bypass Pump, Pump Running).

Wire 512 (Bypass pump, Generator Low Fuel) changed to (Bypass Pump, Pump Low Fuel).

Wire 513 (Bypass pump, Generator alarm) changed to Spare.

Wire 303 (Bypass level transducer) changed to Plant Flow Meter due to a past project.

Wire 304 (Monitor volts) changed to Bypass Level Transducer.

Programmed changes for bypass pump

IO_Map:

Added Pump4LowFuel (NO) %i21 that activates Pump4LowFuelAlarm.

Added PumpRunning4 (NO) %i22 that activates Pump4RunningSignal.

Added PumpFault4 (NO) %i23 that activates Pump4FaultSignal.

ScadaSlaveMap:

Added Pump4LowFuelAlarm to bit 4 in the bit_to_word on Scada 40002.

Added Pump4RunningSignal to bit 5 in the bit_to_word on Scada 40002.

Added Pump4FaultSignal to bit 6 in the bit_to_word on Scada 40002.

Added BypassTankLevelFloatLow to bit 14 in the bit_to_word on Scada 40002.

Added BypassTankLevelFloatHigh to bit 15 in the bit_to_word on Scada 40002.

The next changes were made to give us more registers for the level to send to scada. We had to get rid of the pump runtime minutes.

Changed %mw10 to %mw1000.

Changed %mw16 to %mw1600.

Changed %mw22 to %mw2200.

Changed %mw9 to %mw900.

Changed %mw15 to %mw901.

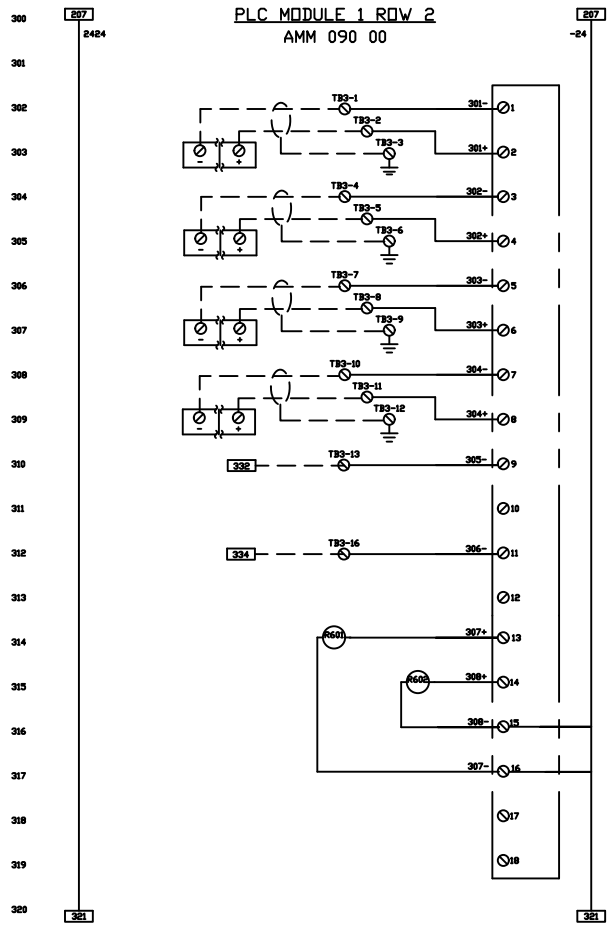
Changed %mw21 to %mw902.

Level_Scaling:

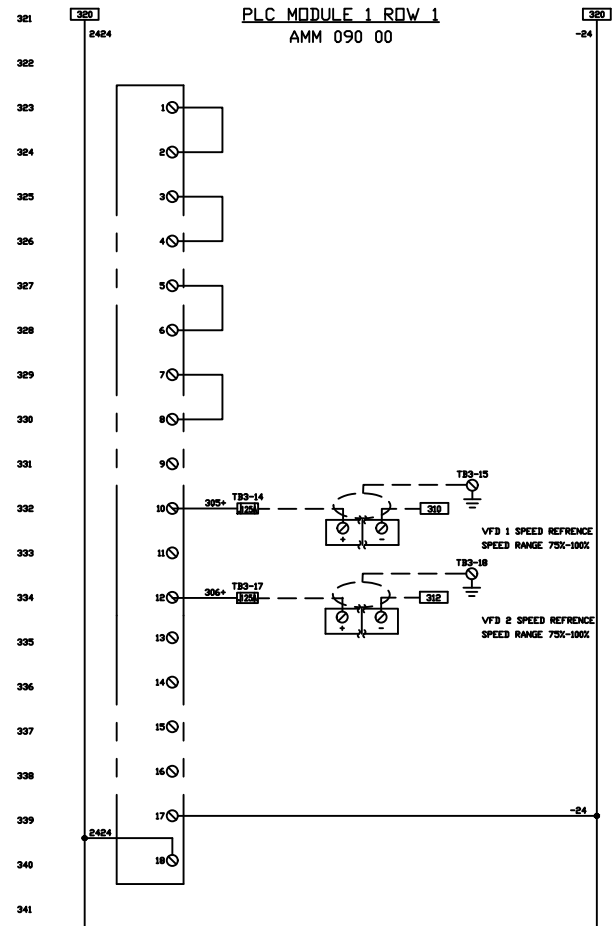
Added scaling from %iw4 to BypassWellLevel for int %mw22

Added Bypass Well Level High alarm Greater than logic.

Add Bypass Well Level Low alarm Less than logic

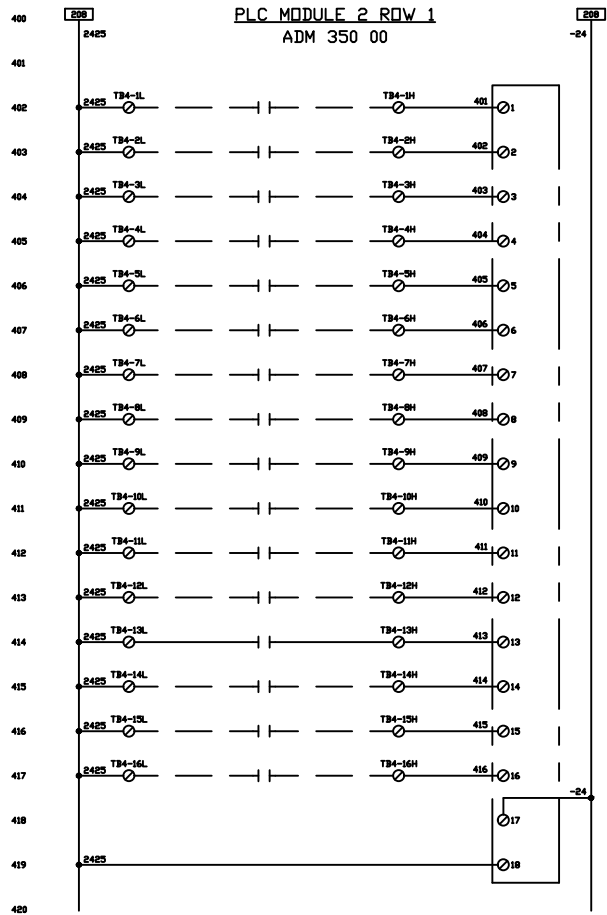


LEGEND
 FIELD WIRING - - - - -
 PANEL WIRING _____

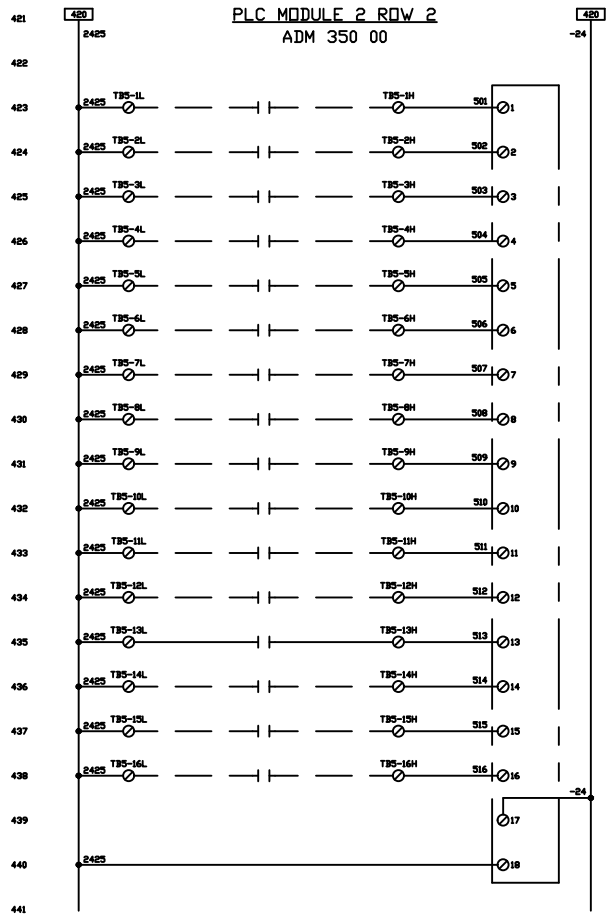


REVISION		APPROVAL		DATE	
NO.	DESCRIPTION	DATE	BY	APPROVED	DATE
A	SUBMITTALS	2/5/18	SOS	SAHANEZ	2/5/18
				SAHANEZ	2/5/18
				SAHANEZ	2/5/18

Kimark Systems
 2505 GREENWOOD DR. SOUTHPLANE, TEXAS 76062 (817)416-8881
 CITY OF ROCKWALL
 SQUARE CREEK LIFT STATION
 SCADA PANEL LAYOUT & BOM
 RLP-28-E103



LEGEND
FIELD WIRING ————
PANEL WIRING ————



REVISION				APPROVAL		DATE
NO.	DESCRIPTION	DATE	BY	APPROVED		
A	SUBMITTALS	2/9/18	SOS	SAHANEZ	2/9/18	
				SAHANEZ	2/9/18	
				SAHANEZ	2/9/18	

Kimark Systems
 2205 GREENWOOD DR. SOUTHPLANE, TEXAS 78002 (817)416-8881
 CITY OF ROCKWALL
 SQUARE CREEK LIFT STATION
 SCADA PANEL LAYOUT & BOM
 RLP-28-E104