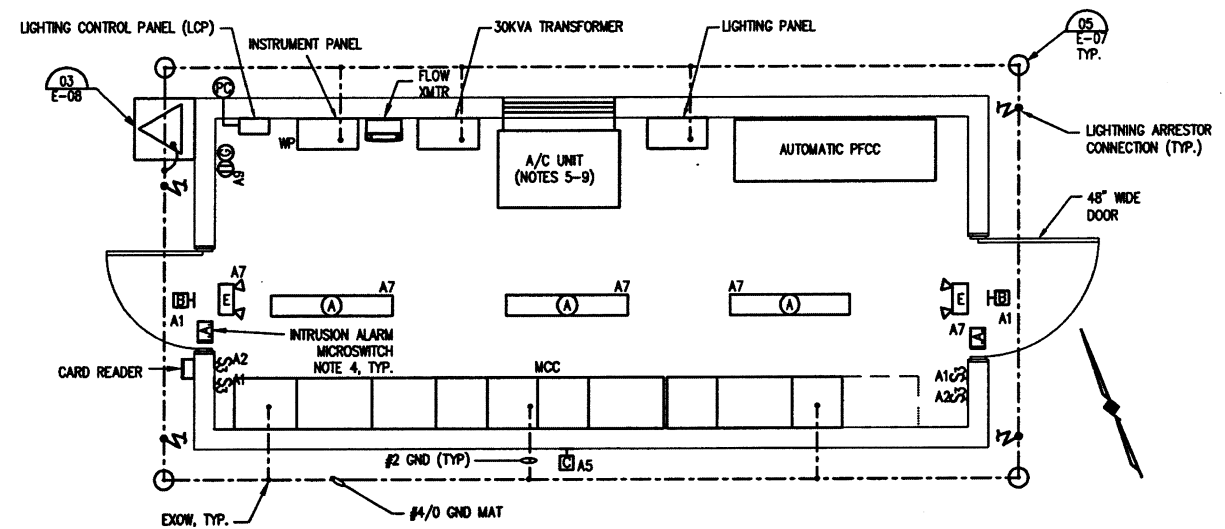


DIMENSIONS								
GEN. SIZE	A	B	C	D	E	F	G	H
400 KW	25'-6"	3'-2.5"	3'-7.5"	1'-8"	15'-0"	7'-2"	F+12"	A+12"

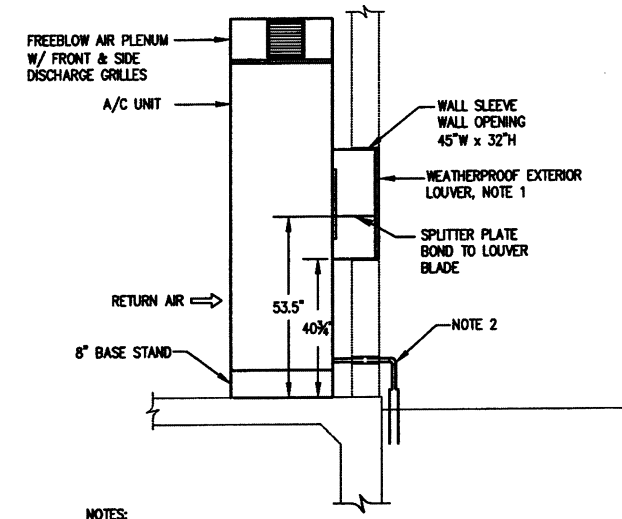
NOTES:  
1. GENERATOR PAD IS SHOWN ON CIVIL SHEETS

**01 GENERATOR**  
NOT TO SCALE



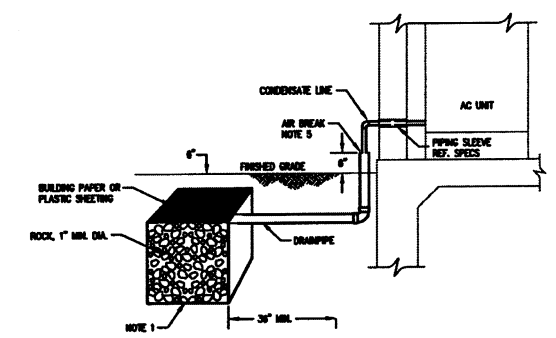
- NOTES:
- A NUMBER BESIDE A LIGHT FIXTURE, CIRCUIT OUTLET OR OTHER DEVICES INDICATES A PANEL BOARD BRANCH CIRCUIT CONNECTION. WHERE CONDUIT AND WIRE HAVE NOT BEEN SHOWN, FURNISH AND INSTALL CONDUIT AND WIRE TO PANEL BOARD. MATERIALS AND INSTALLATION SHALL BE PER THE SPECIFICATIONS. CONDUIT SHALL BE PER THE NEC, 3/4" MINIMUM. WIRE SHALL BE CODE SIZED PER THE BREAKER THAT THE BRANCH CIRCUIT IS TO BE CONNECTED TO ON THE PANEL BOARD SCHEDULE.
  - ALL RECEPTACLES SHALL BE MOUNTED 24" AFF. SWITCHES & TSTATS MOUNTED AT 4'-0" AFF.
  - MOUNT "B" FIXTURES 9'-0" ABOVE FINISHED GRADE TO BOTTOM OF FIXTURE.
  - INSTALL INTRUSION SWITCHES ON EACH EXTERIOR DOOR (2 TOTAL). WIRE IN SERIES, 2#14, #14G, 3/4" C TO SENS-A-PHONE INPUT.
  - PROVIDE 4 TON A/C UNIT. AIREDALE CLASSMATE HE #CHX4/2-480/410 W/ TWO STAGE COMPRESSOR, 15KW 2 STAGE ELECTRIC HEAT, ENTHALPY TRANSFER WHEEL, OCCUPANCY SENSOR W/ KEYED OVERRIDE SWITCH, DISCONNECT SWITCH AND THERMOSTAT.
  - A/C UNIT SHALL BE FITTED WITH A PROGRAMMABLE MICROPROCESSOR CONTROLLER SPECIFICALLY DESIGNED TO OPERATE THE UNIT IN AN ENERGY EFFICIENT MANNER. THE MICROPROCESSOR SHALL BE CAPABLE OF MANAGING THE UNIT IN EACH OF THE FOLLOWING MODES OF OPERATION:
    - A) FREE COOLING
    - B) STAGE ONE MECHANICAL COOLING: 67% CAPACITY COMPRESSOR, LOW SPEED SUPPLY FAN
    - C) STAGE TWO MECHANICAL COOLING: 100% CAPACITY COMPRESSOR, LOW SPEED SUPPLY FAN
    - D) STAGE THREE MECH. COOLING: 100% CAPACITY COMPRESSOR, HIGH SPEED SUPPLY FAN
  - A/C UNIT SHALL BE 13 SEER MINIMUM W/ HFC-R410A REFRIGERANT SYSTEM.
  - A/C UNIT FILTERS SHALL BE 2" THICK PLEATED DISPOSABLE SYNTHETIC FILTERS DESIGNED TO MEET ASHRAE STANDARD 52-7, 90% ARRESTANCE WITH A MINIMUM EFFICIENCY REPORTING VALUE (MERV) 8 RATING.
  - THERMOSTAT SETTINGS:
    - OCCUPIED - 72°
    - UNOCCUPIED - 80°
  - DOORS SHALL BE 14 GA. GALVANIZED STEEL, W/ 14 GA. DOOR FRAME, 4 1/2"x4 1/2" STAINLESS NRP HINGES, MAGNETIC WEATHER-STRIPPING, STOP WITH LATCH, THRESHOLD, BOTTOM SWEEP, DOOR CLOSER AND DRIP CAP.

**02 ELECTRICAL FLOOR PLAN**  
SCALE: 3/8" = 1'-0"



- NOTES:  
1. INSTALL FLASHING & SEAL TO PREVENT WATER INTRUSION. FINISHED WALL OPENING SHALL BE AIRTIGHT.  
2. ROUTE CONDENSATE DRAIN TO DRYWELL. REF. DET 04/THIS SHEET.

**03 A/C UNIT**  
NOT TO SCALE



- NOTES:  
1. MINIMUM 24"x24"x24" OR EQUAL, NOT LESS THAN 24".  
2. THE NEAREST EDGE OF THE DRYWELL SHALL BE AT LEAST 3 FEET FROM ANY STRUCTURE OR BUILDING FOUNDATION.  
3. THE DRYWELL SHALL BE FILLED WITH MIN. 1" ROCK.  
4. THE TOP OF THE DRYWELL SHALL BE COVERED WITH BUILDING PAPER OR PLASTIC SHEETING WITH 6" OF EARTH OR CONCRETE OVER THAT.  
5. THE CONDENSATE PIPE FROM THE COOLING COIL (MIN. 3/4") SHALL INDIRECTLY CONNECT TO A MINIMUM 1 1/2" DRAINPIPE. THE INDIRECT CONNECTION SHALL BE MADE BY AN AIR BREAK AT THE EDGE OF THE FOUNDATION.

**04 CONDENSATE LINE & DRYWELL**  
NOT TO SCALE

This record drawing is a compilation of the sealed engineering drawing for this project; modified by addenda, change orders and information furnished by the contractor. The information shown on the record drawings that was provided by the contractor or others not associated with the design engineer cannot be verified for accuracy or completeness. This original sealed drawings are on file at the offices of Birkhoff, Hendricks & Carter, L.L.P.  
BY PAC DATE 03/06/12

LIGHT FIXTURE SCHEDULE						
MARK	DESCRIPTION	LAMPS	VOLTS	MANUFACTURER	CATALOG NUMBER	COMMENTS
A	ENCLOSED FLUORESCENT	30W SUPER T8	120	HOLOPHANE	HESSD40NND42YP11	PROVIDE LAMPS
B	DOORWAY LIGHT	70W HPS	120	GARDCO	11H-WT-70HPS-120-BRP-F	FULL CUTOFF, PROVIDE PHOTOCELL
C	WALL MOUNTED IHD	750W MH	120	HOLOPHANE	WL3K250MH282	SWITCHED
E	EMGCY LT, SEALED BATTERY	50W TUN	120	HOLOPHANE	DM6C50TNSZ71	PROVIDE LAMPS

PANEL SCHEDULE		VOLTS		120/240V 1Ø 3WIRE	
NUMBER	A	SIZE	100A	MAIN CIRCUIT BREAKER	
LOCATION	MCC				
CIRCUIT DESCRIPTION	CKT BKR	CKT #	CKT #	CKT BKR	CIRCUIT DESCRIPTION
DOORWAY LIGHTING	20/1	1	2	20/1	MCC RECP.
MCC LITS	20/1	3	4	20/1	MCC SP. HEATERS
LIGHT FIXTURE "C"	20/1	5	6	15/1	HEAT TRACE INFLUENT PRESSURE TRANSMITTER
ELECTRIC ROOM LIGHTING	20/1	7	8	15/1	HEAT TRACE EFFLUENT PRESSURE TRANSMITTER
ELECTRIC ROOM RECEPTACLES	20/1	9	10	20/1	INSTRUMENT PANEL
SPARE	20/1	11	12	20/1	AREA LIGHT "L"
SPARE	20/1	13	14	20/1	SPARE
SPARE	20/1	15	16	20/1	SPARE
SPARE	20/1	17	18	20/1	SPARE
SPARE	20/1	19	20	20/1	SPARE
SPARE	20/1	21	22	20/1	SPARE
SPARE	20/1	23	24		SPACE
SPARE	20/1	25	26		SPACE
SPARE	20/1	27	28		SPACE
SPARE	20/1	29	30		SPACE

SQUARE D WOOD OR EQUAL  
PROVIDE INTEGRAL TVSS UNIT WITH 120 KA SURGE RATING SURGE COUNTER AND ALARM CONTACTS

**BIRKHOFF, HENDRICKS & CARTER, L.L.P.**  
PROFESSIONAL ENGINEERS  
Texas Firm F526  
11910 Greenville Ave., Suite 600  
Dallas, Texas 75243 (214) 361-7900



THESE DOCUMENTS ARE FOR BIDDING, CONSTRUCTION, AND PERMIT PURPOSES.  
DATE: 5-28-2010  
McCREARY & ASSOCIATES, INC.  
Consulting Engineers  
Dallas, Texas Firm No. F-338

**CITY OF ROCKWALL, TEXAS**  
SQUABBLE CREEK LIFT STATION  
ELECTRICAL FLOOR PLAN

BHC PROJECT NO. 2007-110  
MAY 2010  
SHEET NO. **E05**

These items and related specifications were prepared for construction of this specific project only. Reuse of these documents is not permitted without written authorization of Birkhoff, Hendricks & Carter, L.L.P.