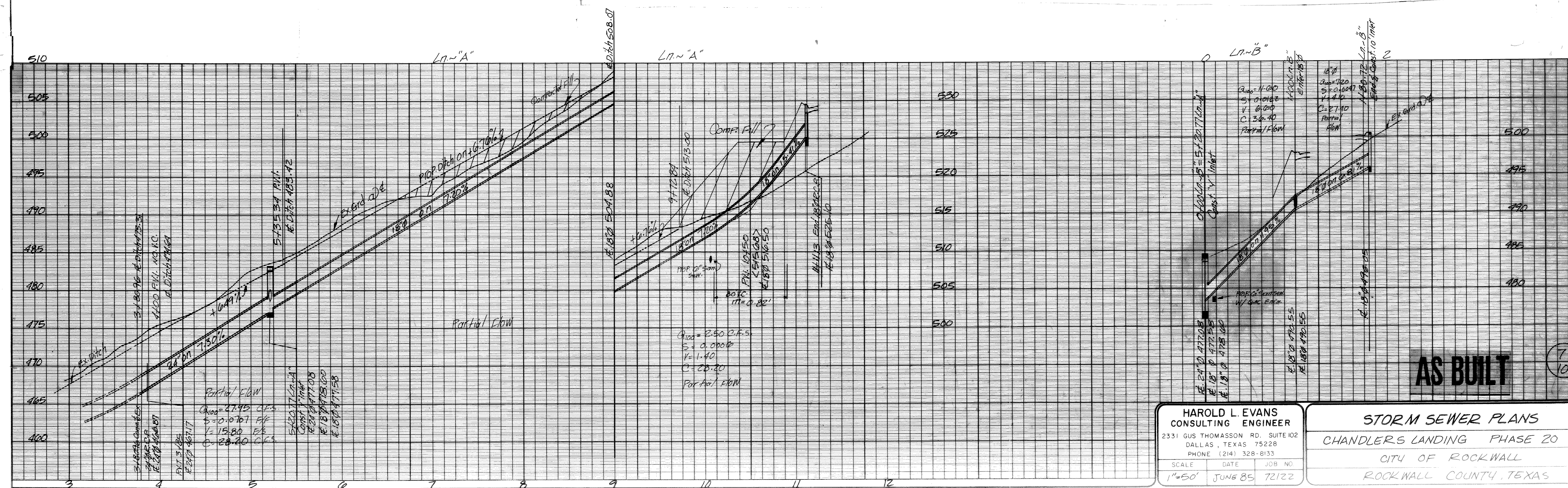


BY DAVID HOSSENY  
 DATE 7/18/85  
 CK'D. n = 0.010

CITY OF ROCKWALL, TEXAS  
 COMPUTATION SHEET FOR DETERMINING  
 CAPACITY OF CURB OPENING INLET

SHEET 1 OF 1  
 STREET Chandlers Landing PH 20  
 MAJOR WATERSHED  
 JOB OR FILE NO. 72122

INLET TYPE & NO.	STATION	D.A. NO.	Qp C.F.S.	CARRY OVER FLOW C.F.S.	TOTAL FLOW Q <sub>o</sub> C.F.S.	Z	Z/N	S <sub>o</sub> FT/FT	Y <sub>o</sub> FT.	PONDED WIDTH	L <sub>o</sub> S.F.	L <sub>o</sub> FT.	L <sub>o</sub> FT.	L <sub>o</sub> FT.	Q <sub>o</sub> C.F.S.	Q <sub>o</sub> C.F.S.	CARRY OVER FLOW C.F.S.	REMARKS
5' 2132 CHANDLER		213	250	0	250	28	1750	0.05	0.08	2.20	0.90	3.60	5	1.40	1.0	250	0	
10' 3153 MISCHIEF		5	720	0	720	28	1750	0.048	0.35	7.80	0.90	8.00	10	1.20	1.0	720	0	
5' 0154 MISCHIEF		0	440	0	440	28	1750	0.048	0.26	7.30	0.88	5.00	5	1	1	440	0	



**HAROLD L. EVANS**  
 CONSULTING ENGINEER  
 2331 GUS THOMASSON RD. SUITE 102  
 DALLAS, TEXAS 75228  
 PHONE (214) 328-8133

**SCALE** DATE JOB NO.  
 1"=50' JUNE 85 72122

**STORM SEWER PLANS**  
 CHANDLERS LANDING PHASE 20  
 CITY OF ROCKWALL  
 ROCKWALL COUNTY, TEXAS