

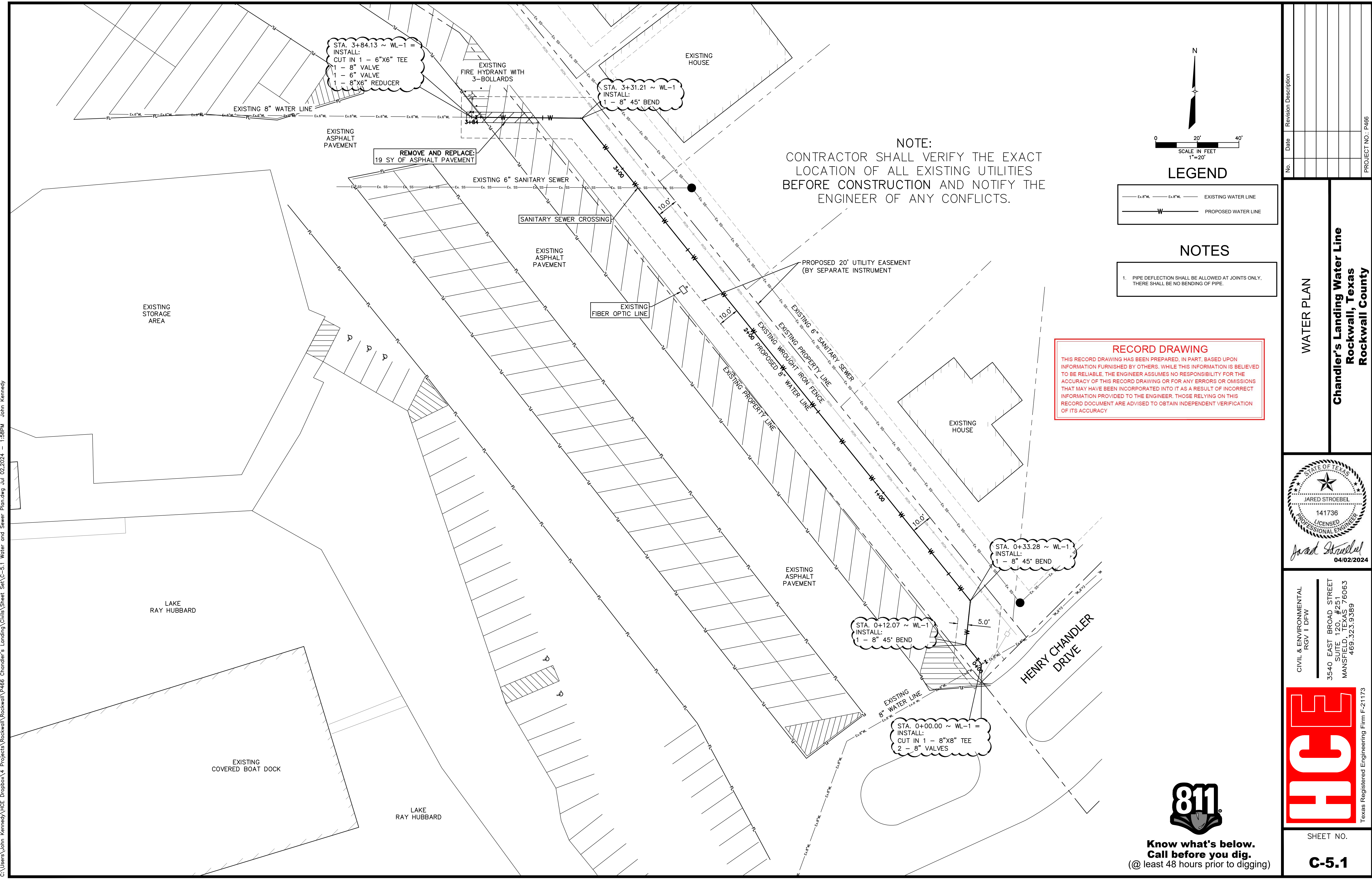
STA. 3+84.13 ~ WL-1 =
INSTALL:
CUT IN 1 - 6"x6" TEE
1 - 8" VALVE
1 - 6" VALVE
1 - 8"x6" REDUCER

STA. 3+31.21 ~ WL-1
INSTALL:
1 - 8" 45° BEND

STA. 0+33.28 ~ WL-1
INSTALL:
1 - 8" 45° BEND

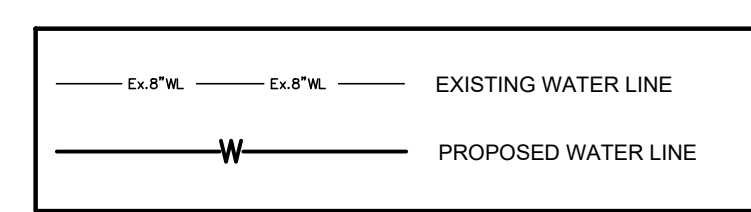
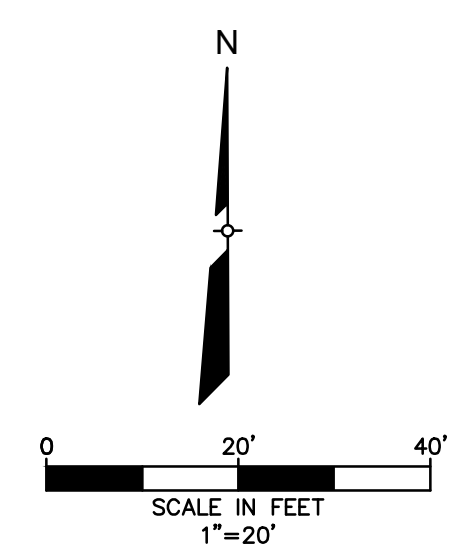
STA. 0+12.07 ~ WL-1
INSTALL:
1 - 8" 45° BEND

STA. 0+00.00 ~ WL-1 =
INSTALL:
CUT IN 1 - 8"x8" TEE
2 - 8" VALVES



REMOVE AND REPLACE:
19 SY OF ASPHALT PAVEMENT

NOTE:
CONTRACTOR SHALL VERIFY THE EXACT LOCATION OF ALL EXISTING UTILITIES BEFORE CONSTRUCTION AND NOTIFY THE ENGINEER OF ANY CONFLICTS.



NOTES

- PIPE DEFLECTION SHALL BE ALLOWED AT JOINTS ONLY. THERE SHALL BE NO BENDING OF PIPE.

RECORD DRAWING

THIS RECORD DRAWING HAS BEEN PREPARED, IN PART, BASED UPON INFORMATION FURNISHED BY OTHERS. WHILE THIS INFORMATION IS BELIEVED TO BE RELIABLE, THE ENGINEER ASSUMES NO RESPONSIBILITY FOR THE ACCURACY OF THIS RECORD DRAWING OR FOR ANY ERRORS OR OMISSIONS THAT MAY HAVE BEEN INCORPORATED INTO IT AS A RESULT OF INCORRECT INFORMATION PROVIDED TO THE ENGINEER. THOSE RELYING ON THIS RECORD DOCUMENT ARE ADVISED TO OBTAIN INDEPENDENT VERIFICATION OF ITS ACCURACY.

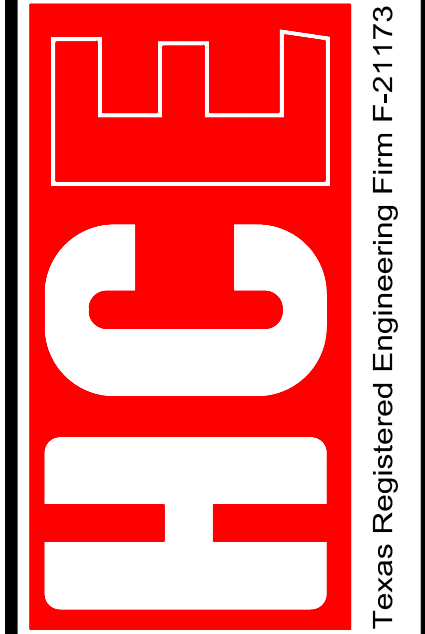
Revision Description	
No.	Date

WATER PLAN

**Chandler's Landing Water Line
Rockwall, Texas
Rockwall County**



CIVIL & ENVIRONMENTAL
RGV 1 DPW
3540 EAST BROAD STREET
SUITE 120, #251
MANSFIELD, TEXAS 76063
469.323.9389



SHEET NO.

C-5.1



**Know what's below.
Call before you dig.**
(@ least 48 hours prior to digging)

C:\Users\John Kennedy\HCE\Dropbox\4 Projects\Rockwall\Rockwall\Rockwall\Projects\Rockwall\Sheet Set\C-5.1 Water and Sewer Plan.dwg Jul 02,2024 - 1:58PM John Kennedy

