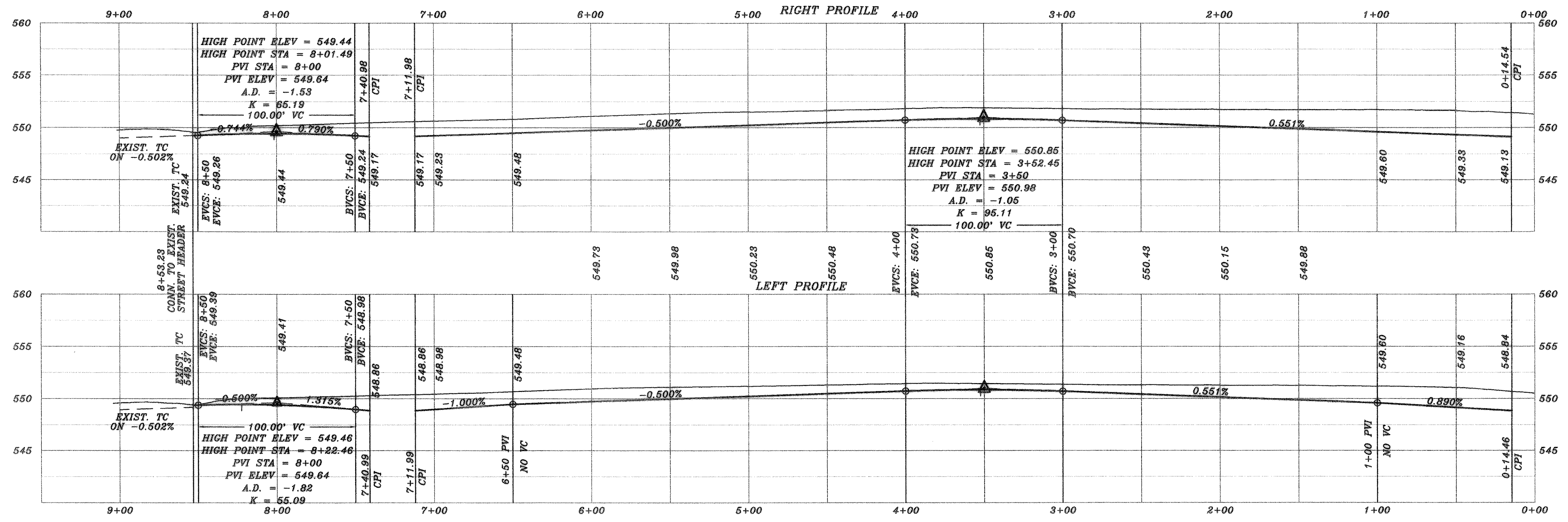
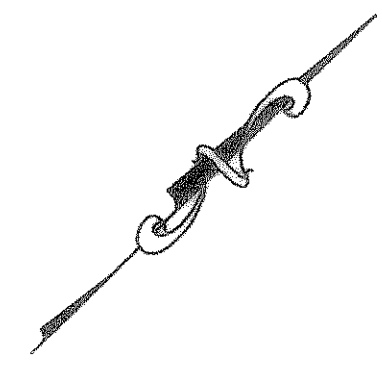
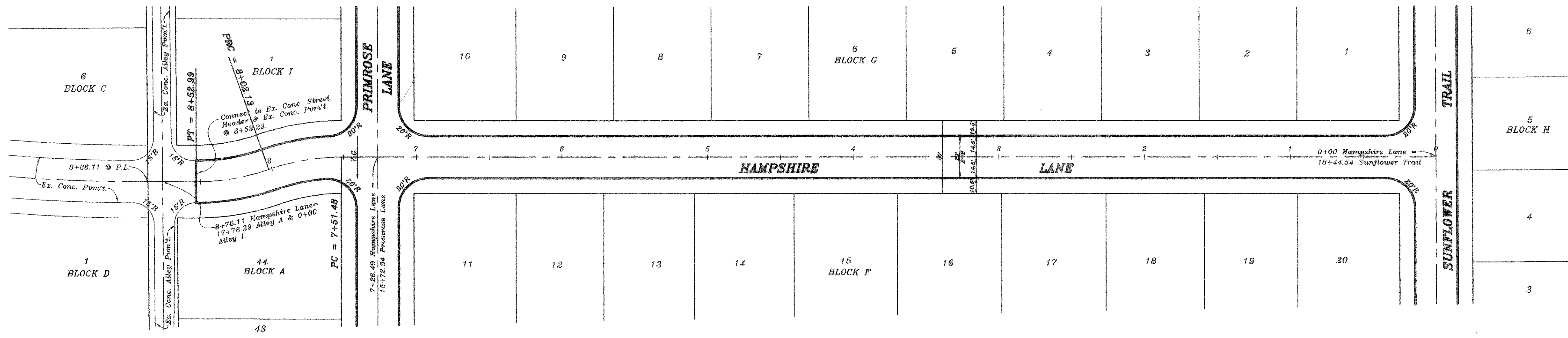
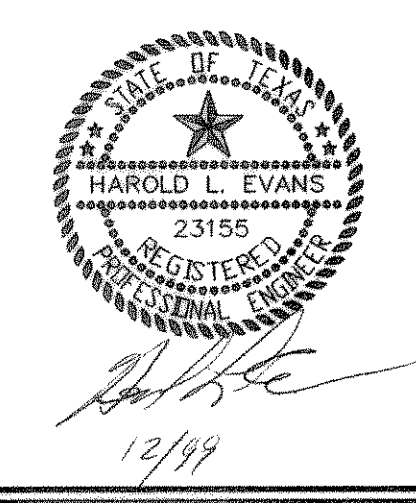


LYNDEN PARK ESTATES PHASE 1A



AS BUILT



HAROLD L. EVANS CONSULTING ENGINEER 2331 GUS THOMASSON ROAD, SUITE 102 DALLAS, TEXAS 75228, (214) 328-8133		SHEET NO. 6 16	
PAVING PLAN HAMPSHIRE LANE HIGHLAND MEADOWS NO.2 CITY OF ROCKWALL		JOB NO. 9557	
REVISION DESCRIPTION 0907FV4	DATE Sept., 1999	SCALE 1" = 40' 1" = 6'	DESIGN H.L.E.
REV. CRDS. AT EXIST. PAV. 11/30/99		DRAWN L.W.G.	