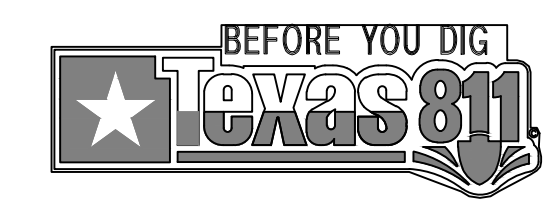
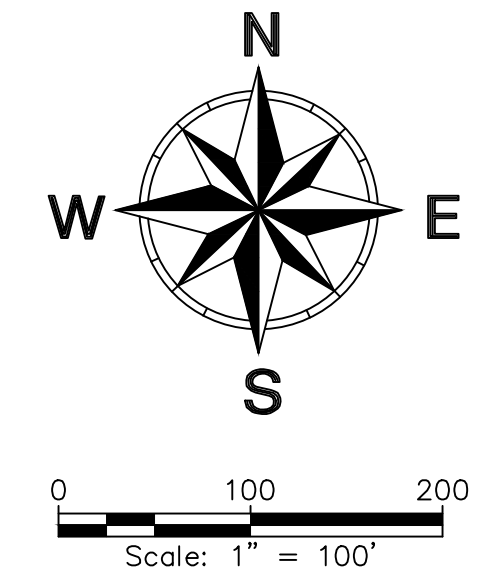
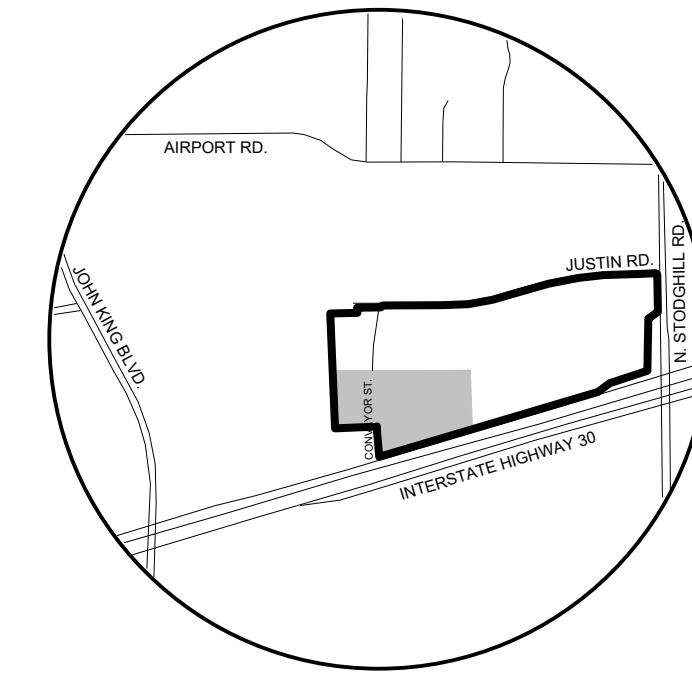
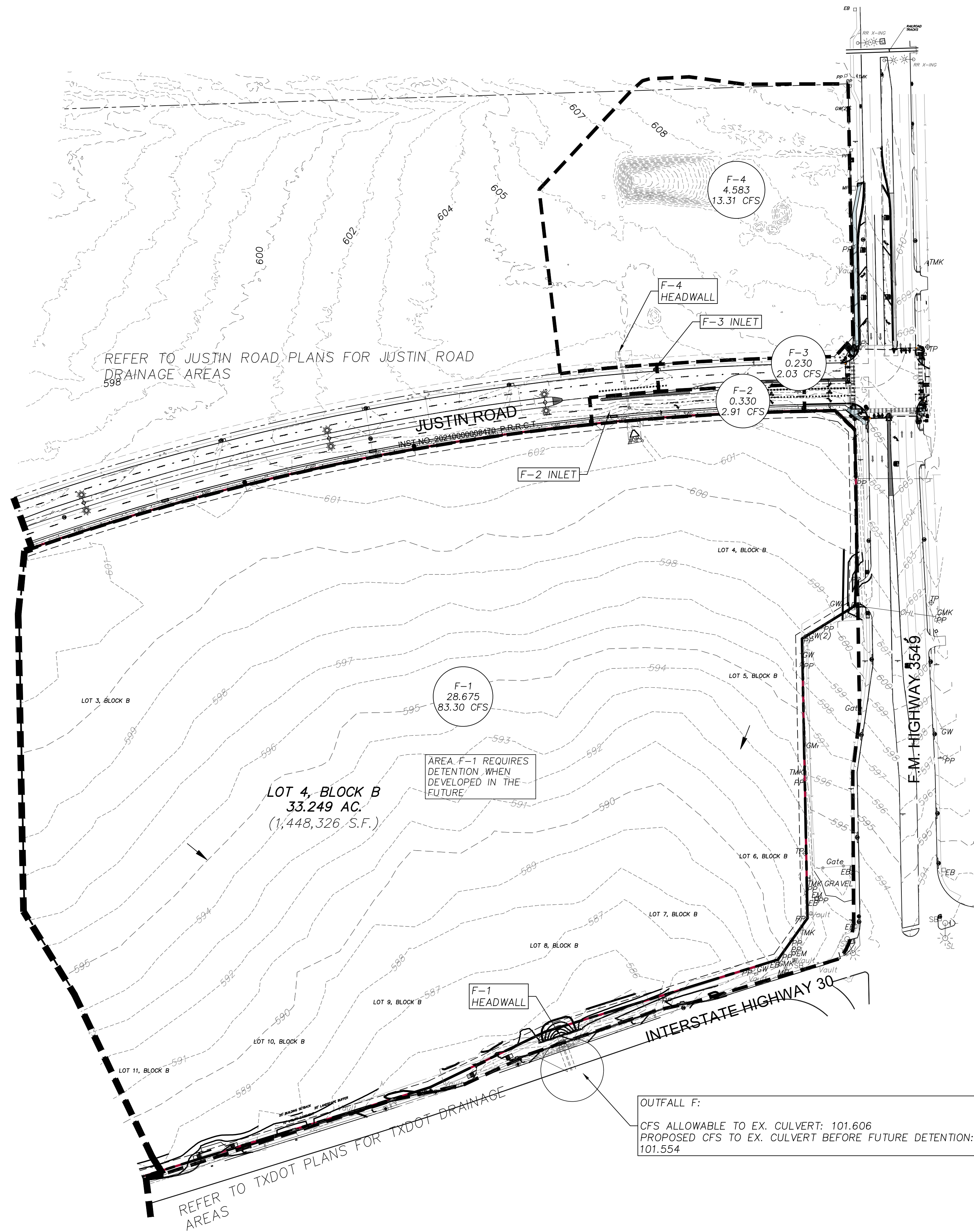


MATCHLINE SEE SHEET C-06.05



DRAINAGE AREA MAP LEGEND

- DRAINAGE AREA I.D.
- OUTFALL I.D.
- ACREAGE
- Q100
- PROPOSED DRAINAGE AREA DIVIDES
- FLOW ARROW
- EXISTING CONTOURS
- PROP. CONTOURS
- BOUNDARY LINE

NOTES:
DRAINAGE AREAS E-5 AND F-1 WILL NEED TO BE DETAILED WHEN DEVELOPED IN THE FUTURE.

AREAS C-2, C-3, C-4, AND C-5 HAVE INTERIM AREAS THAT DRAIN TO OUTFALL C INSTEAD OF THE DETENTION POND. IN FUTURE CONDITIONS AFTER THESE AREAS ARE DEVELOPED, THEY WILL FOLLOW THE ULTIMATE DRAINAGE CONDITIONS AND DRAIN TO DETENTION POND 1. SEE SHEET C-06.07 FOR INTERIM CALCULATIONS. FOR THE REST OF THE PLANS, THE ULTIMATE DRAINAGE CONDITIONS ARE USED FOR A MORE CONSERVATIVE APPROACH.

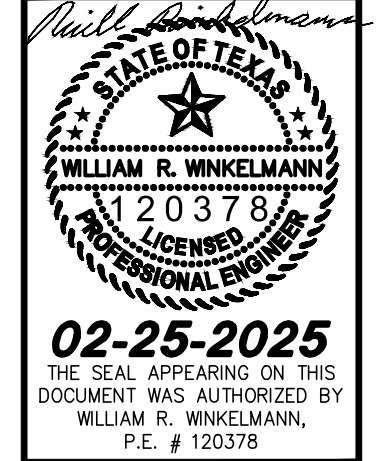
AS-BUILT

THIS RECORD DRAWING IS COMPILATION OF A COPY OF THE SEALED ENGINEERING DRAWING FOR THIS PROJECT, MODIFIED BY ADDENDA, CHANGE ORDERS, AND INFORMATION FURNISHED BY THE CONTRACTOR. THE INFORMATION SHOWN ON THE RECORD DRAWINGS THAT WAS PROVIDED BY THE CONTRACTOR OR OTHERS NOT ASSOCIATED WITH THE DESIGN ENGINEER CANNOT BE VERIFIED FOR ACCURACY OR COMPLETENESS. THE ORIGINAL SEALED DRAWING ARE ON FILE AT THE OFFICES OF WINKELMANN AND ASSOCIATES, INC.

Winkelmann
WINKELMANN AND ASSOCIATES, INC. 04-20-2026
DATE

No.	DATE	REVISION	APPROVAL
5.			
4.			
3.			
2.			
1.			

Winkelmann & Associates, Inc.
CONSULTING CIVIL ENGINEERS ■ SURVEYORS
6750 HILGREET PLAZA DRIVE, SUITE 215
ROCKWALL, TEXAS 75087
Phone: (972) 490-7090
Fax: (972) 490-7099
Texas Engineer Registration No. 89
Texas Surveyor Registration No. 100866-00
Contractor License No. 100866-00
Winkelmann & Associates, Inc.



PROPOSED DRAINAGE AREA MAP 2
I-30 FRONTAGE RD & FM 3549
ROCKWALL, TX
IKEA @ ROCKWALL HEIGHTS

C-06.06