

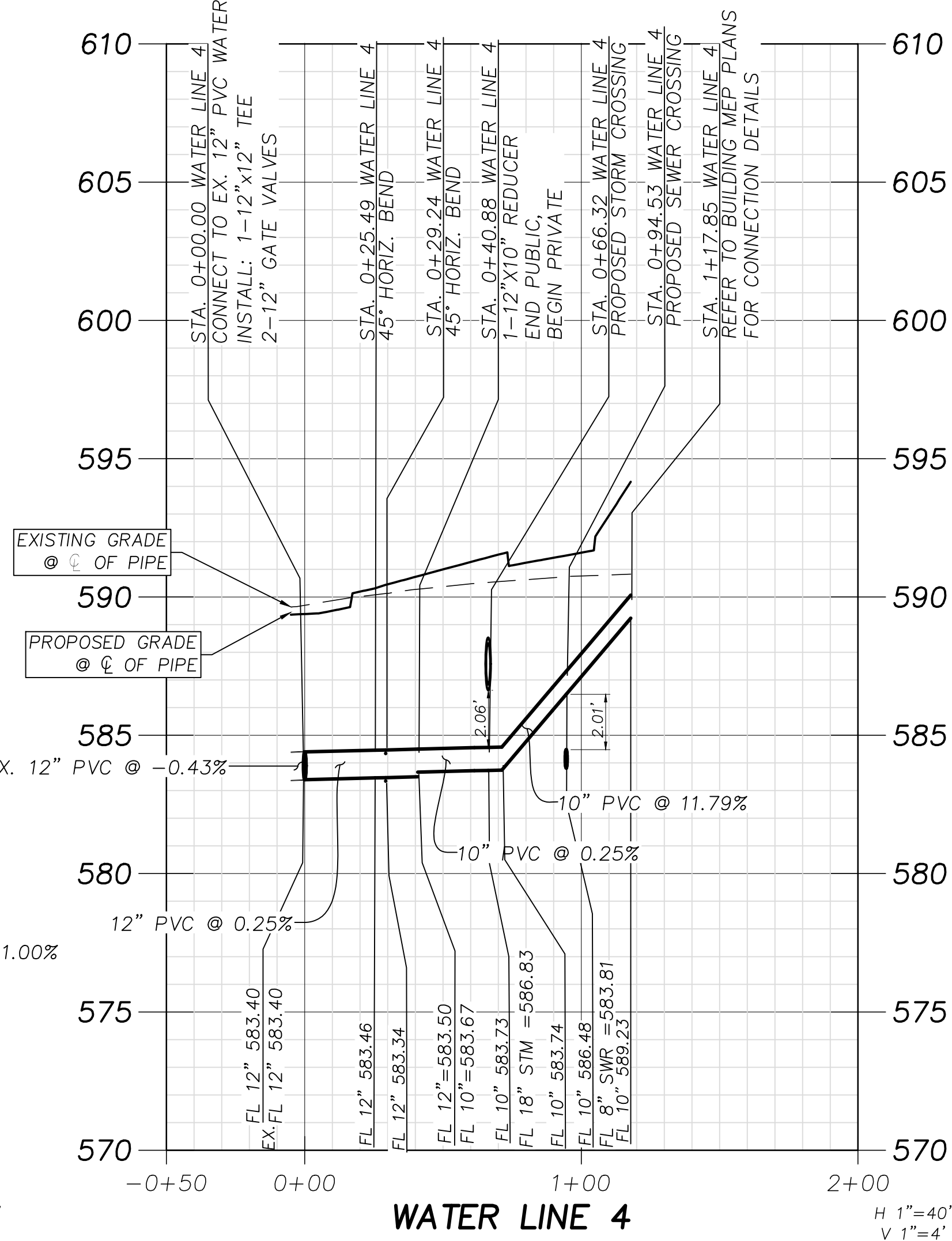
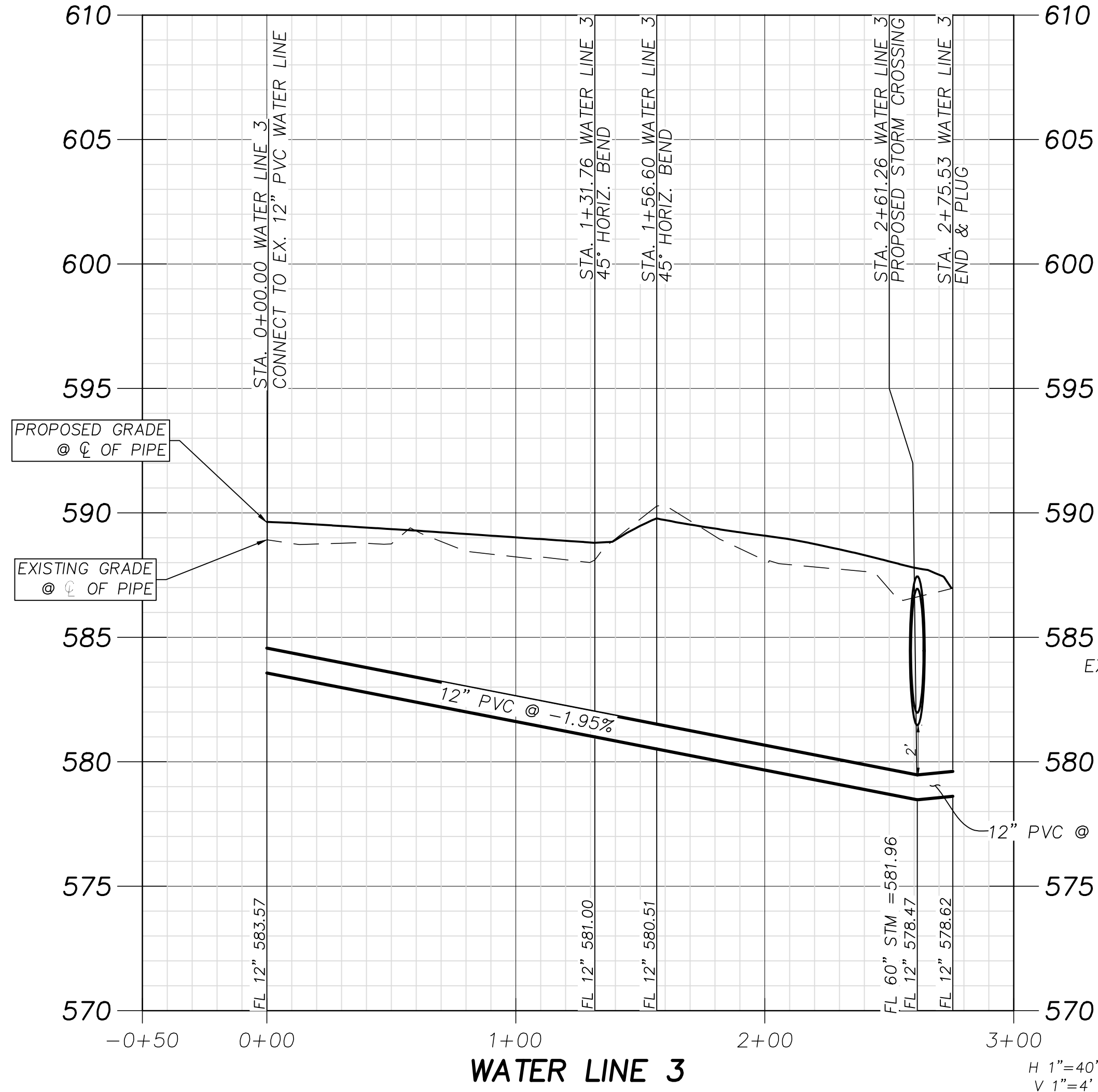
NOTES:

1. ALL RESPONSIBILITY FOR ADEQUACY OF DESIGN REMAINS WITH THE DESIGN ENGINEER. THE CITY OF ROCKWALL, IN REVIEWING AND RELEASING PLANS FOR CONSTRUCTION, ASSUMES NO RESPONSIBILITY FOR ADEQUACY OR ACCURACY OF DESIGN.
2. REFER TO CITY GENERAL CONSTRUCTION NOTES ON SHEET C-01.00 FOR WATER LINE NOTES.
3. DIMENSIONS ARE TO FACE OF CURB OTHERWISE NOTED.
4. SEPARATE PERMIT FROM THE FIRE DEPARTMENT FOR FIRE SPRINKLER.

AS-BUILT

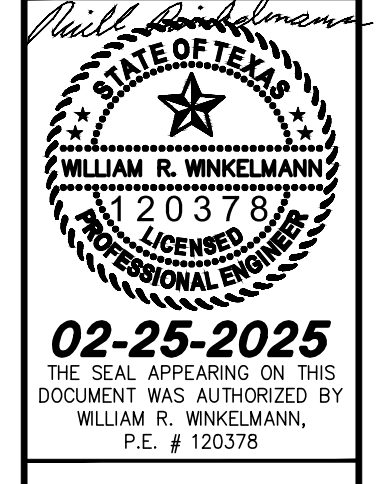
THIS RECORD DRAWING IS COMPILATION OF A COPY OF THE SEALED ENGINEERING DRAWING FOR THIS PROJECT; MODIFIED BY ADDENDA, CHANGE ORDERS, AND INFORMATION FURNISHED BY THE CONTRACTOR. THE INFORMATION SHOWN ON THE RECORD DRAWINGS THAT WAS PROVIDED BY THE CONTRACTOR OR OTHERS NOT ASSOCIATED WITH THE DESIGN ENGINEER CANNOT BE VERIFIED FOR ACCURACY OR COMPLETENESS. THE ORIGINAL SEALED DRAWING ARE ON FILE AT THE OFFICES OF WINKELMANN AND ASSOCIATES, INC.

Will Winkelmann
WINKELMANN AND ASSOCIATES, INC. 04-20-2026
DATE



No.	DATE	REVISION	APPROV.
5.			
4.			
3.			
2.			
1.			

Winkelmann & Associates, Inc.
CONSULTING CIVIL ENGINEERS • SURVEYORS
6750 HILGREET PLAZA DR., SUITE 215
ROCKWALL, TEXAS 75087
Phone: (972) 960-7090
Fax: (972) 960-7099
E-mail: info@winkelmann.com
www.winkelmann.com



WATER LINE 3 & 4 PROFILES
I-30 FRONTAGE RD & FM 3549
ROCKWALL, TX

C-09.04