

RELEASED FOR CONSTRUCTION
 ALL RESPONSIBILITY FOR ADEQUACY OF DESIGN
 REMAINS WITH THE DESIGN ENGINEER. THE CITY
 OF ROCKWALL, IN REVIEWING AND RELEASING
 PLANS FOR CONSTRUCTION, ASSUMES NO
 RESPONSIBILITY FOR ADEQUACY OR ACCURACY
 OF DESIGN.

CITY _____ DATE _____

DISCLAIMER: The use of this standard is governed by the Texas Engineering Practice Act. No warranty of any kind is made by TxDOT for any purpose whatsoever. TxDOT assumes no responsibility for the conversion of this standard to other formats or for incorrect results or damages resulting from its use.

Slope	TABLE OF VARIABLE DIMENSIONS AND QUANTITIES FOR ONE HEADWALL (5)									
	Dia of Pipe (D)	Values for One Pipe				Values to be Added for Each Add'l Pipe				
		W	X	Y	L	Reinf (Lbs)	Conc (CY)	X and W	Reinf (Lbs)	Conc (CY)
2:1	12"	4'-7 1/2"	2'-6"	2'-10"	3'-3 1/2"	88	0.6	1'-9"	20	0.2
	15"	5'-5 3/4"	2'-9 1/2"	3'-4"	3'-10 1/4"	103	0.7	2'-2"	24	0.3
	18"	6'-4 1/4"	3'-1"	3'-10"	4'-5"	124	0.9	2'-8"	32	0.3
	21"	7'-2 3/4"	3'-4 1/2"	4'-4"	5'-0"	143	1.1	3'-1"	43	0.4
	24"	8'-2 1/2"	3'-9 1/2"	4'-10"	5'-7"	164	1.3	3'-7"	50	0.5
	27"	9'-1"	4'-1"	5'-4"	6'-2"	179	1.5	3'-11"	56	0.6
	30"	9'-11 1/2"	4'-4 1/2"	5'-10"	6'-8 3/4"	203	1.7	4'-4"	65	0.8
	33"	10'-10"	4'-8"	6'-4"	7'-3 3/4"	224	2.0	4'-8"	71	0.9
	36"	11'-8 1/4"	4'-11 1/2"	6'-10"	7'-10 3/4"	249	2.2	5'-1"	81	1.0
	42"	13'-5 1/4"	5'-6 1/2"	7'-10"	9'-0 1/2"	298	2.8	5'-10"	97	1.3
	48"	15'-9"	6'-1 1/2"	9'-4"	10'-9 1/4"	360	3.8	6'-7"	117	1.7
	54"	17'-5 3/4"	6'-8 1/2"	10'-4"	11'-11 1/4"	427	4.5	7'-6"	151	2.1
60"	19'-2 3/4"	7'-3 1/2"	11'-4"	13'-1"	481	5.3	8'-3"	174	2.5	
66"	20'-11 1/2"	7'-10 1/2"	12'-4"	14'-3"	544	6.2	8'-9"	194	2.9	
72"	22'-8 1/2"	8'-5 1/2"	13'-4"	15'-4 3/4"	601	7.1	9'-4"	213	3.3	
3:1	12"	6'-3"	2'-6"	4'-3"	4'-11"	118	0.8	1'-9"	22	0.2
	15"	7'-5"	2'-9 1/2"	5'-0"	5'-9 1/4"	137	1.1	2'-2"	28	0.3
	18"	8'-6 3/4"	3'-1"	5'-9"	6'-7 3/4"	170	1.3	2'-8"	37	0.5
	21"	9'-8 3/4"	3'-4 1/2"	6'-6"	7'-6"	195	1.6	3'-1"	48	0.6
	24"	11'-0"	3'-9 1/2"	7'-3"	8'-4 1/2"	227	2.0	3'-7"	58	0.7
	27"	12'-2"	4'-1"	8'-0"	9'-2 3/4"	251	2.3	3'-11"	67	0.8
	30"	13'-4"	4'-4 1/2"	8'-9"	10'-1 1/4"	293	2.7	4'-4"	77	1.0
	33"	14'-5 3/4"	4'-8"	9'-6"	10'-11 3/4"	318	3.1	4'-8"	84	1.2
	36"	15'-7 3/4"	4'-11 1/2"	10'-3"	11'-10"	351	3.5	5'-1"	96	1.4
	42"	17'-11 1/2"	5'-6 1/2"	11'-9"	13'-6 3/4"	432	4.5	5'-10"	119	1.7
	48"	21'-1 3/4"	6'-1 1/2"	14'-0"	16'-2"	537	6.1	6'-7"	146	2.3
	54"	23'-5 1/2"	6'-8 1/2"	15'-6"	17'-10 3/4"	630	7.3	7'-6"	186	2.9
60"	25'-9 1/4"	7'-3 1/2"	17'-0"	19'-7 1/2"	719	8.7	8'-3"	219	3.4	
66"	28'-1"	7'-10 1/2"	18'-6"	21'-4 1/4"	811	10.1	8'-9"	242	3.9	
72"	30'-4 3/4"	8'-5 1/2"	20'-0"	23'-1 1/4"	924	11.7	9'-4"	272	4.4	
4:1	12"	7'-10 3/4"	2'-6"	5'-8"	6'-6 1/2"	148	1.1	1'-9"	24	0.3
	15"	9'-4"	2'-9 1/2"	6'-8"	7'-8 1/4"	181	1.5	2'-2"	32	0.4
	18"	10'-9 1/2"	3'-1"	7'-8"	8'-10 1/4"	221	1.9	2'-8"	42	0.5
	21"	12'-2 3/4"	3'-4 1/2"	8'-8"	10'-0"	260	2.3	3'-1"	57	0.7
	24"	13'-9 1/2"	3'-9 1/2"	9'-8"	11'-2"	301	2.8	3'-7"	67	0.9
	27"	15'-3"	4'-1"	10'-8"	12'-3 3/4"	334	3.3	3'-11"	77	1.0
	30"	16'-8 1/4"	4'-4 1/2"	11'-8"	13'-5 3/4"	385	3.8	4'-4"	89	1.3
	33"	18'-1 3/4"	4'-8"	12'-8"	14'-7 1/2"	425	4.5	4'-8"	101	1.4
	36"	19'-7"	4'-11 1/2"	13'-8"	15'-9 1/4"	472	5.1	5'-1"	115	1.7
	42"	22'-5 3/4"	5'-6 1/2"	15'-8"	18'-1"	583	6.5	5'-10"	141	2.1
	48"	26'-6 1/4"	6'-1 1/2"	18'-8"	21'-6 3/4"	730	8.9	6'-7"	175	2.8
	54"	29'-5"	6'-8 1/2"	20'-8"	23'-10 1/4"	875	10.7	7'-6"	226	3.6
60"	32'-3 3/4"	7'-3 1/2"	22'-8"	26'-2"	996	12.7	8'-3"	264	4.3	
66"	35'-2 1/2"	7'-10 1/2"	24'-8"	28'-5 3/4"	1,140	14.9	8'-9"	300	4.9	
72"	38'-1 1/4"	8'-5 1/2"	26'-8"	30'-9 1/2"	1,297	17.3	9'-4"	334	5.6	
6:1	12"	11'-2"	2'-6"	8'-6"	9'-9 3/4"	224	1.9	1'-9"	28	0.4
	15"	13'-2 1/4"	2'-9 1/2"	10'-0"	11'-6 1/2"	268	2.5	2'-2"	37	0.5
	18"	15'-2 1/2"	3'-1"	11'-6"	13'-3 3/4"	330	3.2	2'-8"	50	0.7
	21"	17'-2 3/4"	3'-4 1/2"	13'-0"	15'-0 1/4"	387	3.9	3'-1"	69	0.9
	24"	19'-4 1/2"	3'-9 1/2"	14'-6"	16'-9"	453	4.8	3'-7"	80	1.2
	27"	21'-4 3/4"	4'-1"	16'-0"	18'-5 3/4"	512	5.7	3'-11"	96	1.4
	30"	23'-5 1/4"	4'-4 1/2"	17'-6"	20'-2 1/2"	593	6.7	4'-4"	110	1.7
	33"	25'-5 1/2"	4'-8"	19'-0"	21'-11 1/4"	675	7.8	4'-8"	127	2.0
	36"	27'-5 3/4"	4'-11 1/2"	20'-6"	23'-8"	735	9.0	5'-1"	144	2.3
	42"	31'-6 1/4"	5'-6 1/2"	23'-6"	27'-1 1/2"	922	11.5	5'-10"	179	3.0
	48"	37'-3 1/2"	6'-1 1/2"	28'-0"	32'-4"	1,191	15.9	6'-7"	231	4.0
	54"	41'-4 1/4"	6'-8 1/2"	31'-0"	35'-9 1/2"	1,424	19.2	7'-6"	300	5.0
60"	45'-4 3/4"	7'-3 1/2"	34'-0"	39'-3"	1,631	22.9	8'-3"	353	6.0	

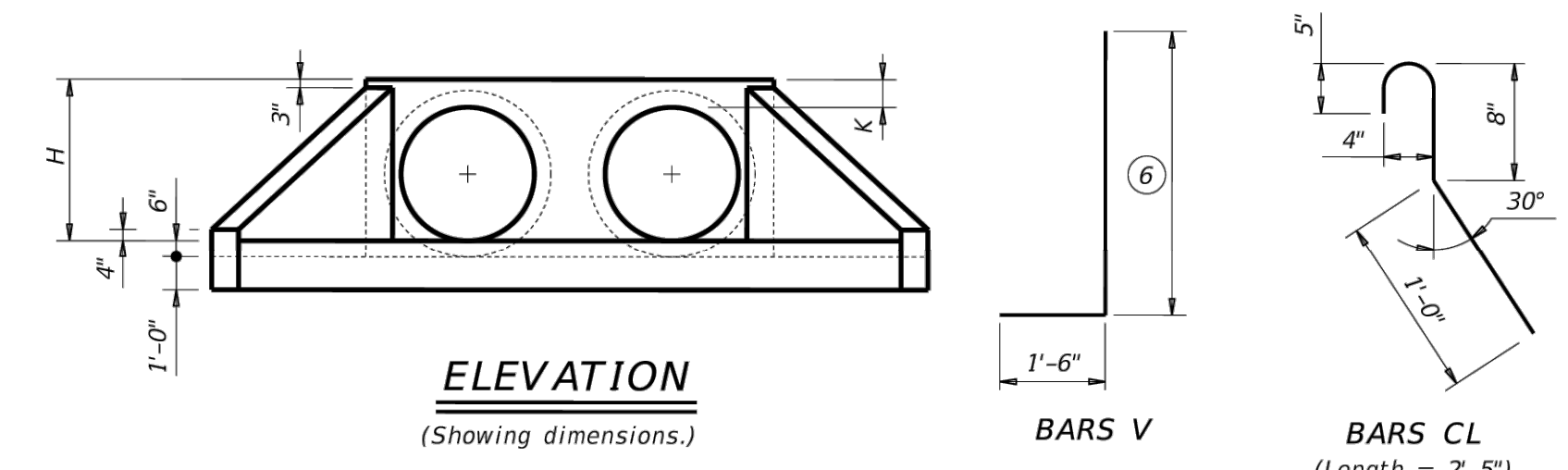
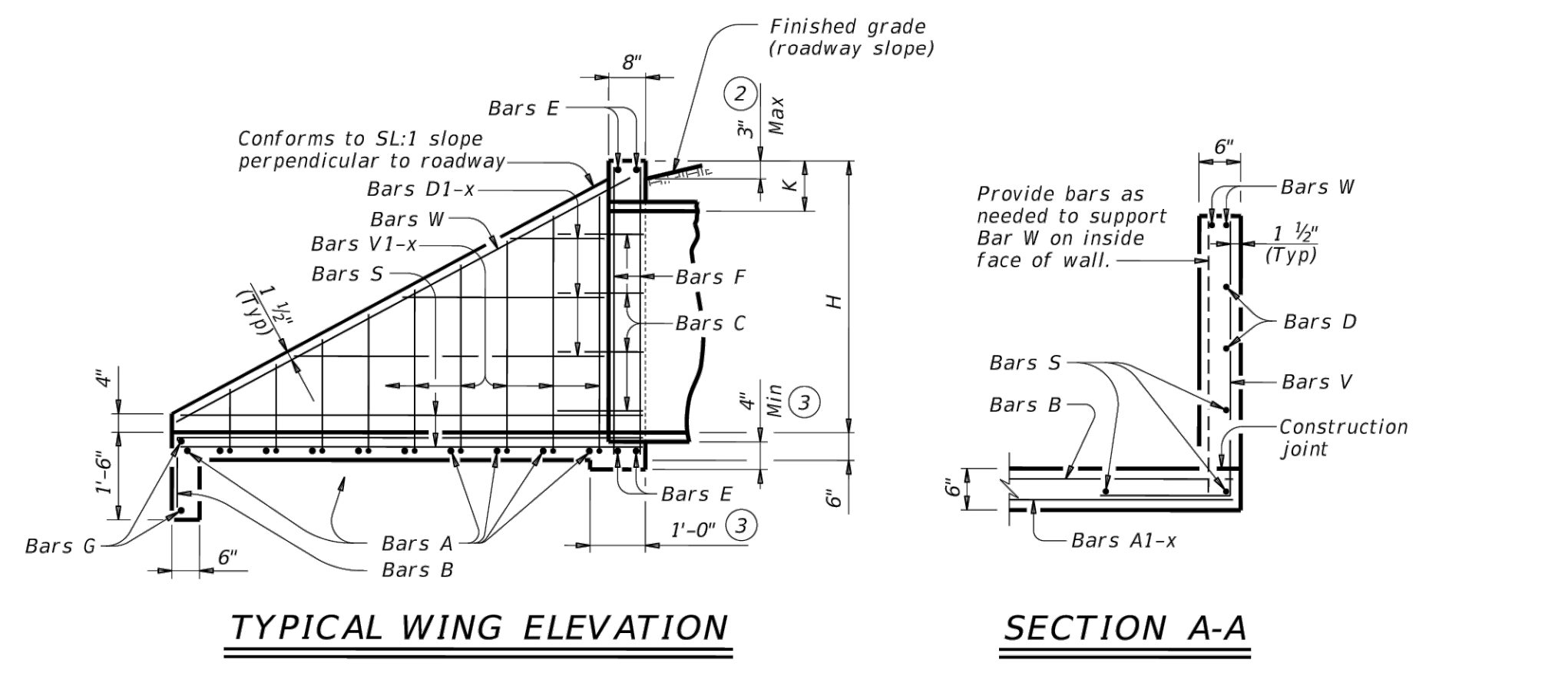
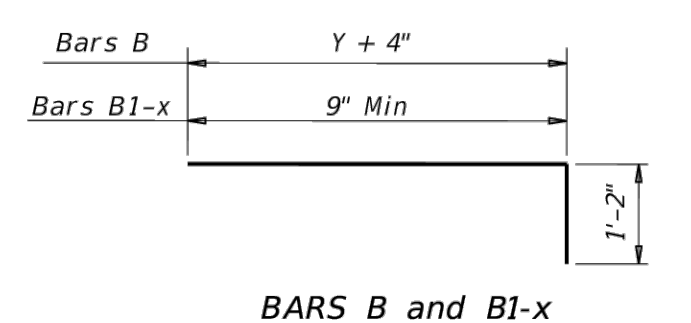
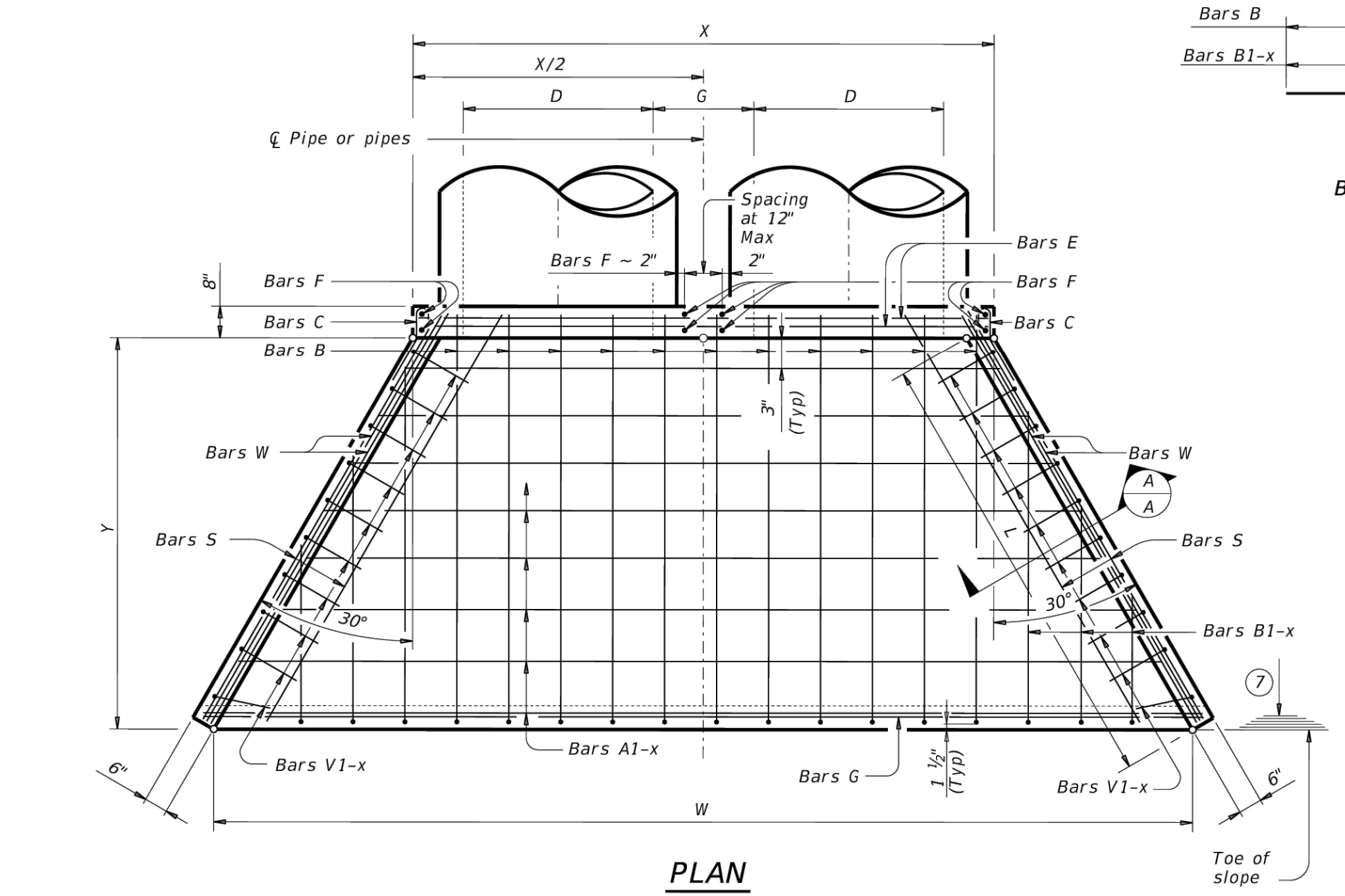


TABLE OF REINFORCING STEEL (5)			
Bar	Size	Spa	No.
A	#4	1'-0"	~
B	#3	1'-6"	~
C	#4	1'-0"	~
D	#3	1'-0"	~
E	#5	~	4
F	#5	~	~
G	#3	~	2
S	#4	~	6
V	#4	1'-0"	~
W	#5	~	4

TABLE OF CONSTANT DIMENSIONS			
Dia of Pipe (D)	G	K (4)	H
12"	0'-9"	1'-0"	2'-0"
15"	0'-11"	1'-0"	2'-3"
18"	1'-2"	1'-0"	2'-6"
21"	1'-4"	1'-0"	2'-9"
24"	1'-7"	1'-0"	3'-0"
27"	1'-8"	1'-0"	3'-3"
30"	1'-10"	1'-0"	3'-6"
33"	1'-11"	1'-0"	3'-9"
36"	2'-1"	1'-0"	4'-0"
42"	2'-4"	1'-0"	4'-6"
48"	2'-7"	1'-3"	5'-3"
54"	3'-0"	1'-3"	5'-9"
60"	3'-3"	1'-3"	6'-3"
66"	3'-3"	1'-3"	6'-9"
72"	3'-4"	1'-3"	7'-3"



- Quantities shown are for concrete pipe and will increase slightly for metal pipe installations.
- For vehicle safety, construct curbs no more than 3" above finished grade. Reduce curb heights, if necessary, to meet these requirements. No changes will be made in quantities and no additional compensation will be allowed for this work.
- Provide a 1'-0" footing as shown where required to maintain 4" minimum cover for pipes.
- Dimensions shown are usual and maximum.
- Quantities shown are for one structure end only (one headwall).
- Min Length = $6" + 3" \times \left(\frac{12 \times H - 7}{12 \times L} \right)$
 Max Length = $12 \times H - 3" \times \left(\frac{12 \times H - 7}{12 \times L} \right) - 1"$
- Lengths of wings based on SL:1 slope along this line.

MATERIAL NOTES:
 Provide Grade 60 reinforcing steel.
 Provide Class C concrete (f'c = 3,600 psi).

GENERAL NOTES:
 Designed according to AASHTO LRFD Bridge Design Specifications.
 Do not mount bridge rails of any type directly to these culvert headwalls.
 This standard may not be used for wall heights, H, exceeding the values shown.

Cover dimensions are clear dimensions, unless noted otherwise. Reinforcing dimensions are out-to-out of bars.

Texas Department of Transportation Bridge Division Standard

CONCRETE HEADWALLS WITH FLARED WINGS FOR 0° SKEW PIPE CULVERTS

CH-FW-0

FILE: CD-CH-FW-20.dgn DN: TxDOT CK: TxDOT/DW: TxDOT CK: TxDOT
 ©TxDOT February 2020 CONT SECT JOB HIGHWAY
 REVISIONS DIST COUNTY SHEET NO.

Winkelmann & Associates, Inc.
 CONSULTING CIVIL ENGINEERS ■ SURVEYORS
 6720 HILGRET PLAZA, SUITE 215 (972) 490-7090
 11000 W. PARKWAY (972) 490-7090
 Dallas, Texas 75247 Registration No. 89 100866-00
 Contract # 1024 Measurement & Associates, Inc.

02-25-2025
 THE SEAL APPEARING ON THIS DOCUMENT WAS AUTHORIZED BY WILLIAM R. WINKELMANN, P.E. # 120378

PRIVATE CIVIL DETAILS (4)
 I-30 FRONTAGE RD & FM 3549
 ROCKWALL, TX

IKEA @ ROCKWALL HEIGHTS

C-12.03