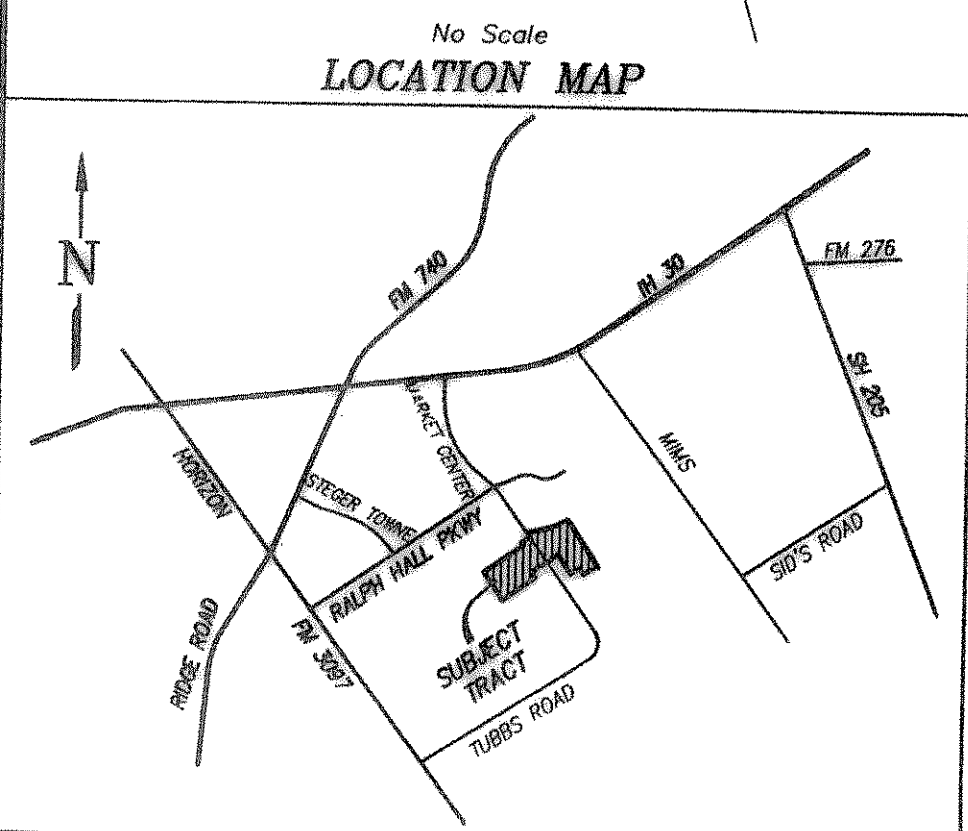
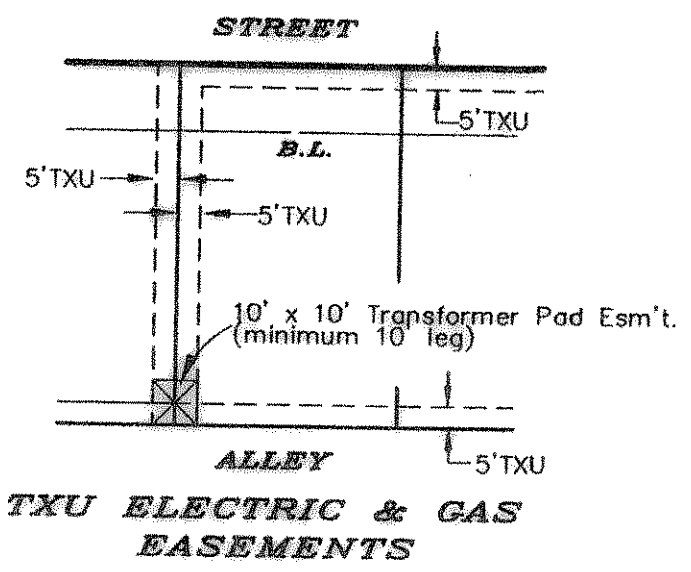


- LEGEND:**
- ⊙ = 1/2" iron pin with a red cap stamped Tipton Eng., Inc. set at corner.
 - ⊕ = 1/2" iron pin found.
 - TXU = TXU ELECTRIC & GAS CO. EASEMENT



CURVE DATA

CURVE	RADIUS	DELTA	TANGENT	LENGTH	CHORD	BEARING
C-1	375.00'	05°21'19"	17.54'	35.05'	35.04'	S 47°09'09" W
C-2	400.00'	06°34'20"	45.98'	45.86'	N 46°26'07" E	
C-3	400.00'	05°14'47"	18.33'	36.63'	S 47°05'53" W	
C-4	40.00'	90°00'00"	40.00'	62.83'	S 00°31'30" E	
C-5	40.00'	90°00'00"	40.00'	62.83'	S 00°31'30" E	
C-6	40.00'	90°00'00"	40.00'	62.83'	S 00°31'30" E	
C-7	40.00'	88°12'57"	38.73'	62.83'	N 89°28'30" E	
C-8	50.00'	157°21'59"	249.85'	137.33'	N 89°54'08" E	
C-9	50.00'	163°44'23"	350.00'	142.89'	S 87°20'18" W	
C-10	1414.98'	04°30'12"	55.64'	111.21'	S 00°31'30" E	
C-11	220.00'	21°22'34"	58.95'	117.82'	S 64°50'56" W	
C-12	200.00'	21°11'50"	53.99'	107.17'	N 34°55'35" W	
C-13	1414.98'	04°30'12"	55.64'	111.21'	S 00°31'30" E	
C-14	1414.98'	04°30'12"	55.64'	111.21'	S 00°31'30" E	
C-15	375.00'	04°30'12"	55.64'	111.21'	S 00°31'30" E	
C-16	425.00'	13°37'15"	50.76'	101.03'	S 88°48'43" E	
C-17	400.00'	16°57'45"	59.65'	118.42'	N 37°02'38" W	
C-18	425.00'	13°37'15"	50.76'	101.03'	S 88°48'43" E	
C-19	425.00'	13°37'15"	50.76'	101.03'	S 88°48'43" E	
C-20	400.00'	15°21'04"	53.91'	107.17'	N 60°49'09" E	
C-21	40.00'	91°19'33"	40.94'	63.76'	S 72°22'17" E	
C-22	50.00'	165°03'56"	381.47'	144.05'	N 88°48'43" E	
C-23	1414.98'	04°30'12"	55.64'	111.21'	S 00°31'30" E	
C-24	1369.98'	18°49'17"	436.59'	558.59'	S 68°16'10" W	
C-25	1364.98'	17°01'17"	204.26'	405.50'	S 69°05'02" W	
C-26	370.00'	09°35'39"	31.05'	61.96'	S 41°39'12" E	
C-27	430.00'	06°15'40"	23.52'	46.99'	N 43°07'40" W	
C-28	430.00'	08°40'07"	32.59'	39.96'	N 41°11'26" E	
C-29	370.00'	04°47'40"	15.49'	30.99'	N 41°39'12" E	
C-30	400.00'	08°40'07"	30.32'	60.52'	N 41°11'26" E	
C-31	400.00'	09°35'39"	33.57'	66.98'	N 41°39'12" E	
C-32	40.00'	90°00'00"	40.00'	62.83'	S 00°31'30" E	
C-33	50.00'	156°34'39"	241.20'	136.84'	N 87°52'09" W	



FINAL PLAT
LYNDEN PARK ESTATES PHASE 2
 E.T. GRAINES CHISUM SURVEY, ABSTRACT NO. 64
 CITY OF ROCKWALL, ROCKWALL COUNTY, TEXAS
 OWNER
KIMBALL HILL HOMES—TEXAS, INC.
 1422 West Main Street ~ Suite 201 ~ Lewisville, Texas 75067
 972.353.4345

NOTE:
 STATE PLANE COORDINATES SHOWN ARE BASED ON CITY OF ROCKWALL MONUMENT NO'S 2 & 7 (1983)
 THE CITY OF ROCKWALL ACCEPTS THE RELOCATION OF THE EXISTING TUBBS ROAD RIGHT-OF-WAY, WITH THEIR ACCEPTANCE AND RECORDATION OF THIS PLAT.

ENGINEERING/SURVEYING/PLANNING
TIPTON ENGINEERING, INC.
 6330 Broadway Blvd. ~ Suite C ~ Garland, Texas 75043
 972.226.2987