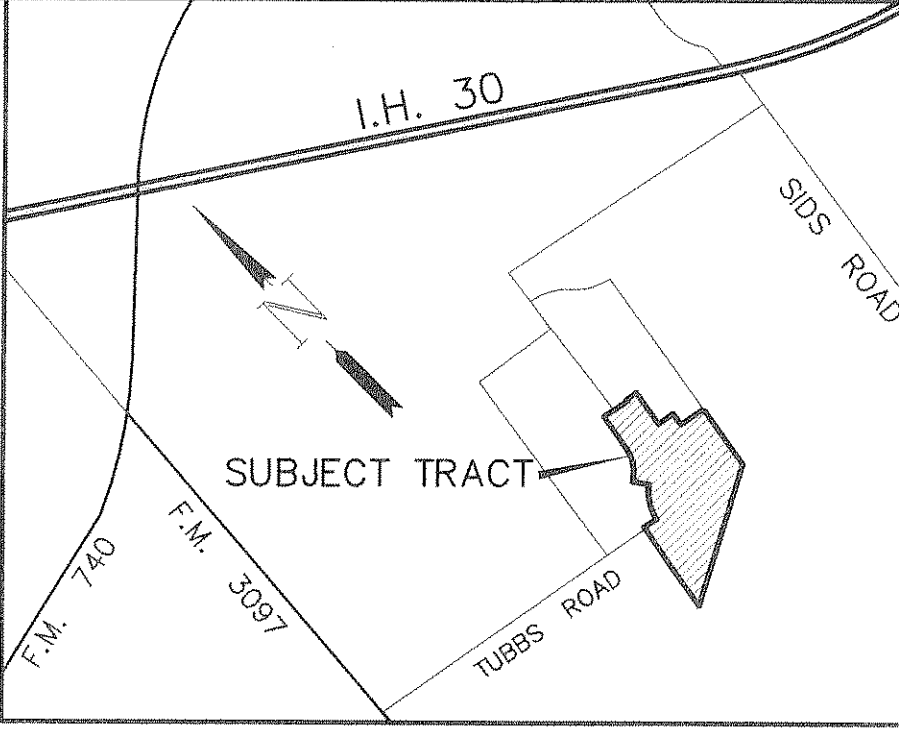
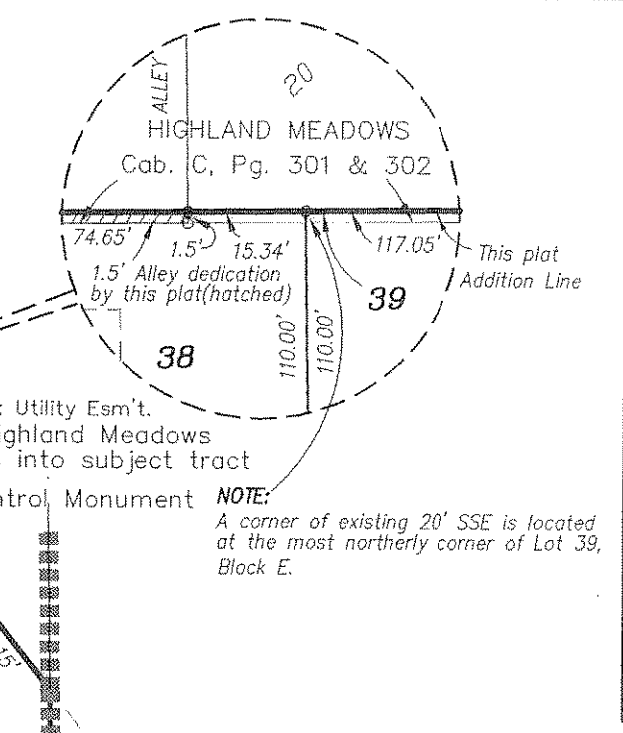


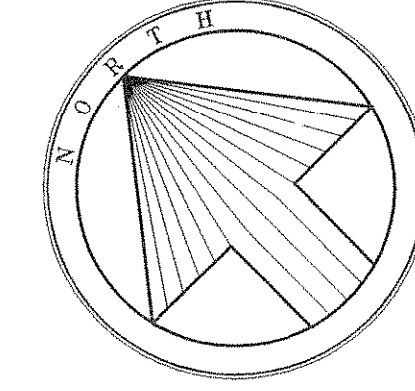
STATE PLANE COORDINATES SHOWN ARE BASED ON CITY OF ROCKWALL MONUMENT NO'S 2 & 7 (1983)
 THE CITY OF ROCKWALL ACCEPTS THE RELOCATION OF THE EXISTING TUBBS ROAD RIGHT-OF-WAY, WITH THEIR ACCEPTANCE AND RECORDATION OF THIS PLAT.

HIGHLAND MEADOWS
 Cab. C, Pg. 301 & 302

PRIMROSE LANE



LOCATION MAP
 Not to Scale



SCALE: 1" = 100'

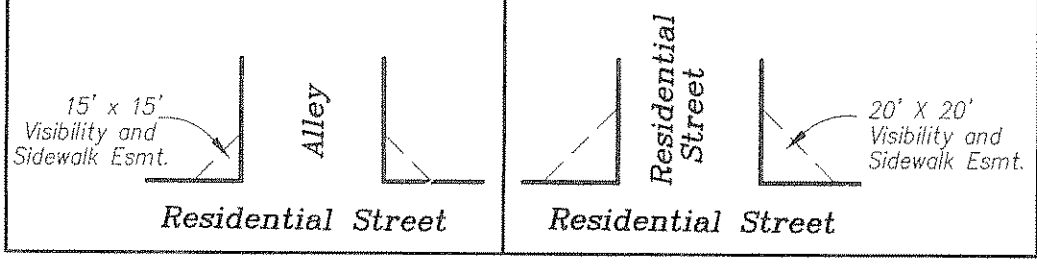
BEARINGS BASED ON THE FILE PLAT OF LYNDEN PARK ESTATES NO. 3 (Cab. E, Slide 151)

- LEGEND:
- (S) = 1/2" iron pin with a red cap stamped Tipton Eng., Inc. set at corner.
 - (F) = 1/2" iron pin with a red cap stamped Tipton Eng., Inc. found at corner.
 - UE = UTILITY EASEMENT
 - OE = ONCOR ELECTRIC DELIVERY CO. EASEMENT
 - DE = DRAINAGE EASEMENT
 - SSE = SANITARY SEWER EASEMENT
 - TXU = TXU ELECTRIC & GAS CO. EASEMENT
 - WME = WALL/LANDSCAPE MAINTENANCE ESMT.
 - ◇ = STREET NAME CHANGE

BLOCK D, LOT 1
 DRAINAGE EASEMENT
 11,384.1 Acres/495,890 SF
 To Be Dedicated To The City of Rockwall
 As A Park/Natural Area By This Plat

NOTE:
 NO STRUCTURES, DECKS, SWIMMING
 POOLS, ECT. IN EASEMENTS

TYPICAL VISIBILITY CLIP EASEMENT DETAIL



R = 1250.00'
 D = 0706'12"
 T = 77.58'
 L = 154.97'
 CH = 154.97'
 CB = N 47'55'42" E

FINAL PLAT
 LYNDEN PARK ESTATES PHASE 4
 E.T. GAINES CHISUM SURVEY, ABSTRACT NO. 64
 G. WELLS SURVEY, ABSTRACT NO. 219
 CITY OF ROCKWALL, ROCKWALL COUNTY, TEXAS

OWNER
KIMBALL HILL HOMES - TEXAS, INC.
 1422 West Main Street ~ Suite 201 ~ Lewisville, Texas 75067
 972.353.4345

ENGINEERING/SURVEYING/PLANNING
TIPTON ENGINEERING, INC.
 6330 Broadway Blvd. ~ Suite C ~ Garland, Texas 75043
 972.226.2967