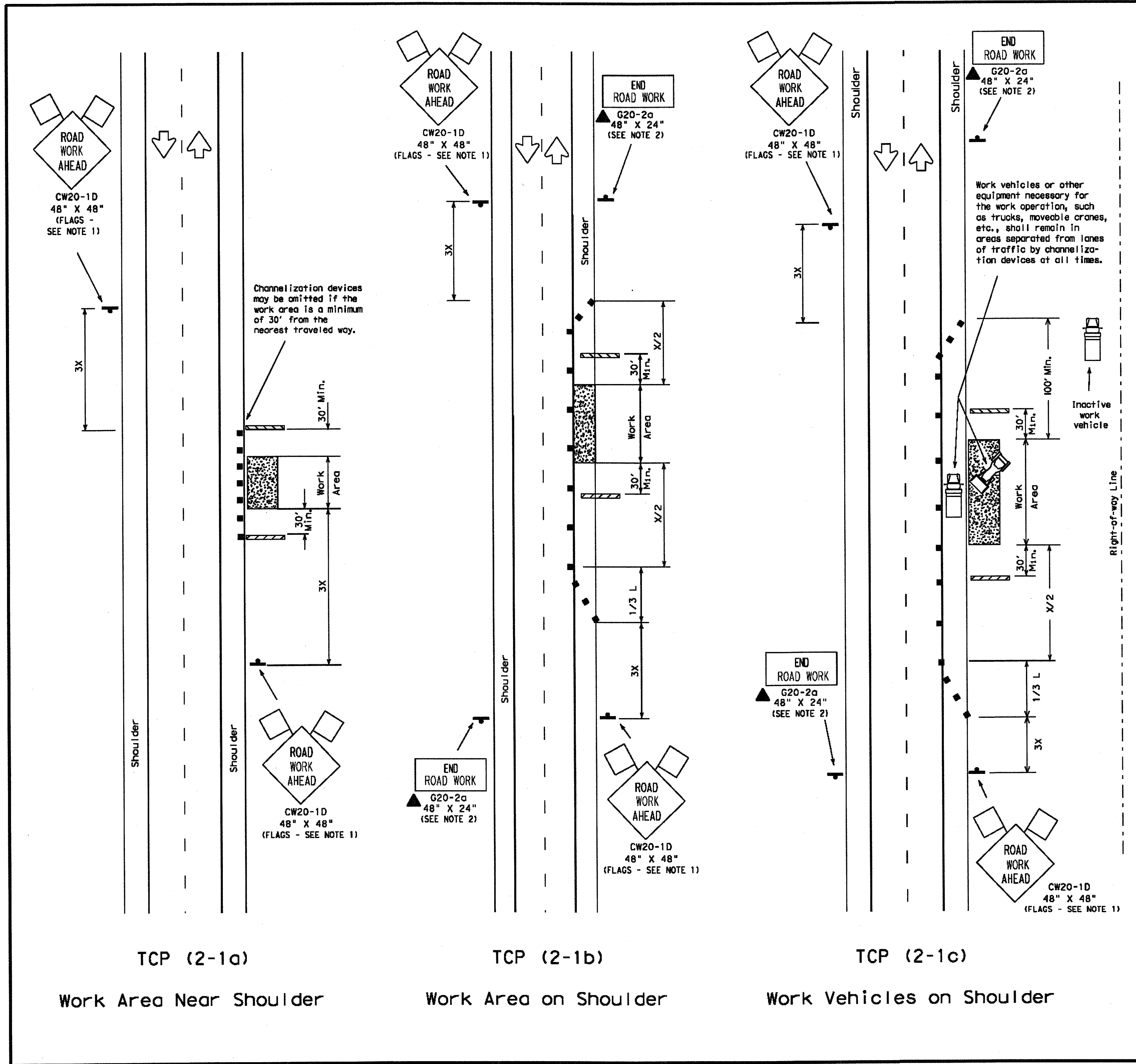


DISCLAIMER
 This standard is governed by the "Texas Engineering Practice Act". No warranty of any kind is made by TxDOT for any purpose whatsoever. TxDOT assumes no responsibility for the conversion of this standard to other formats or for incorrect results or damages resulting from its use.

DN:	
CK:	
DW:	
CK:	

LEVELS DISPLAYED	DATE:
1 2 3 4 5 6 7 8 9 10 11 12 13 14 15 16	17 18 19 20 21 22 23 24 25 26 27 28 29 30 31 32
33 34 35 36 37 38 39 40 41 42 43 44 45 46 47 48	49 50 51 52 53 54 55 56 57 58 59 60 61 62 63 64
65 66 67 68 69 70 71 72 73 74 75 76 77 78 79 80	81 82 83 84 85 86 87 88 89 90 91 92 93 94 95



- LEGEND
- Type III Barricade
 - Channelizing Devices
 - Flag
 - Heavy Work Vehicle
 - Truck Mounted Attenuator
 - Trailer Mounted Flashing Arrow Panel
 - Portable Changeable Message Sign
 - Flagger
 - Sign Post

Posted Speed $\frac{S}{\text{MPH}}$	Formula	Minimum Desirable Taper Lengths $\frac{L}{\text{FT.}}$			Suggested Maximum Spacing of Device		Minimum Sign Spacing $\frac{L}{\text{Distance}}$
		10' Offset	11' Offset	12' Offset	On a Taper	On a Tangent	
30	$L = \frac{WS^2}{60}$	150'	165'	180'	30'	60' - 75'	120'
35		205'	225'	245'	35'	70' - 90'	160'
40		265'	295'	320'	40'	80' - 100'	240'
45	$L = WS$	450'	495'	540'	45'	90' - 110'	320'
50		500'	550'	600'	50'	100' - 125'	400'
55		550'	605'	660'	55'	110' - 140'	500'
60		600'	660'	720'	60'	120' - 150'	* 600'
65		650'	715'	780'	65'	130' - 165'	* 700'
70		700'	770'	840'	70'	140' - 175'	* 800'

* Conventional Roads Only
 * Taper lengths have been rounded off.
 L = Length of Taper (FT.) W = Width of Offset (FT.) S = Posted Speed (MPH)

TYPICAL USAGE:				
MOBILE	SHORT DURATION	SHORT TERM STATIONARY	INTERMEDIATE TERM STATIONARY	LONG TERM STATIONARY
	✓	✓	✓	✓

- GENERAL NOTES:
- Unless otherwise stated in the plans, flags attached to signs are **REQUIRED**.
 - All traffic control devices illustrated are **REQUIRED**, except those denoted with the triangle symbol may be omitted when stated elsewhere in the plans.
 - Type III barricades are required on both sides of work area at all times. (See BC Standards for barricade details.)
 - Stockpiled material should be placed a minimum 30' from nearest traveled way.
 - On high speed facilities advance warning signs should be installed approximately 3X from the work area or from the beginning of a lane or shoulder taper. On low speed facilities the advance warning sign should be placed on the "X" minimum distance.

Only pre-qualified products shall be used. A list of compliant products and their sources may be obtained by writing or faxing:

Standards Engineer
 Traffic Operations Division - TE
 Texas Department of Transportation
 125 East 11th Street
 Austin, Texas 78701-2483
 Phone (512) 416-3335
 Fax (512) 416-3161
 E-mail TRF-STANDARD@mailgw.dot.state.tx.us

STANDARD PLANS
TEXAS DEPARTMENT OF TRANSPORTATION
Traffic Operations Division

TRAFFIC CONTROL PLAN

TCP (2-1) - 98

© TxDOT December 1985		DR - LR	CU - MT	DR - DN	CU - MT	REG NO. 1
REVISIONS	DATE	STATE	FEDERAL	FEDERAL AID PROJECT		SHEET
2-94			G			
8-95				COUNTY	SECTION	JOB
1-97						HIGHWAY
4-98						