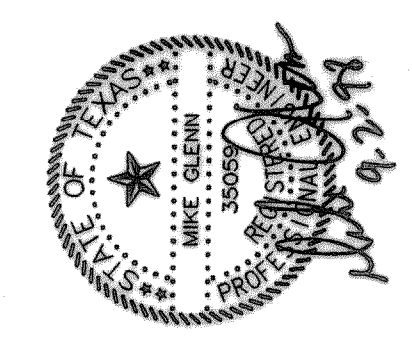
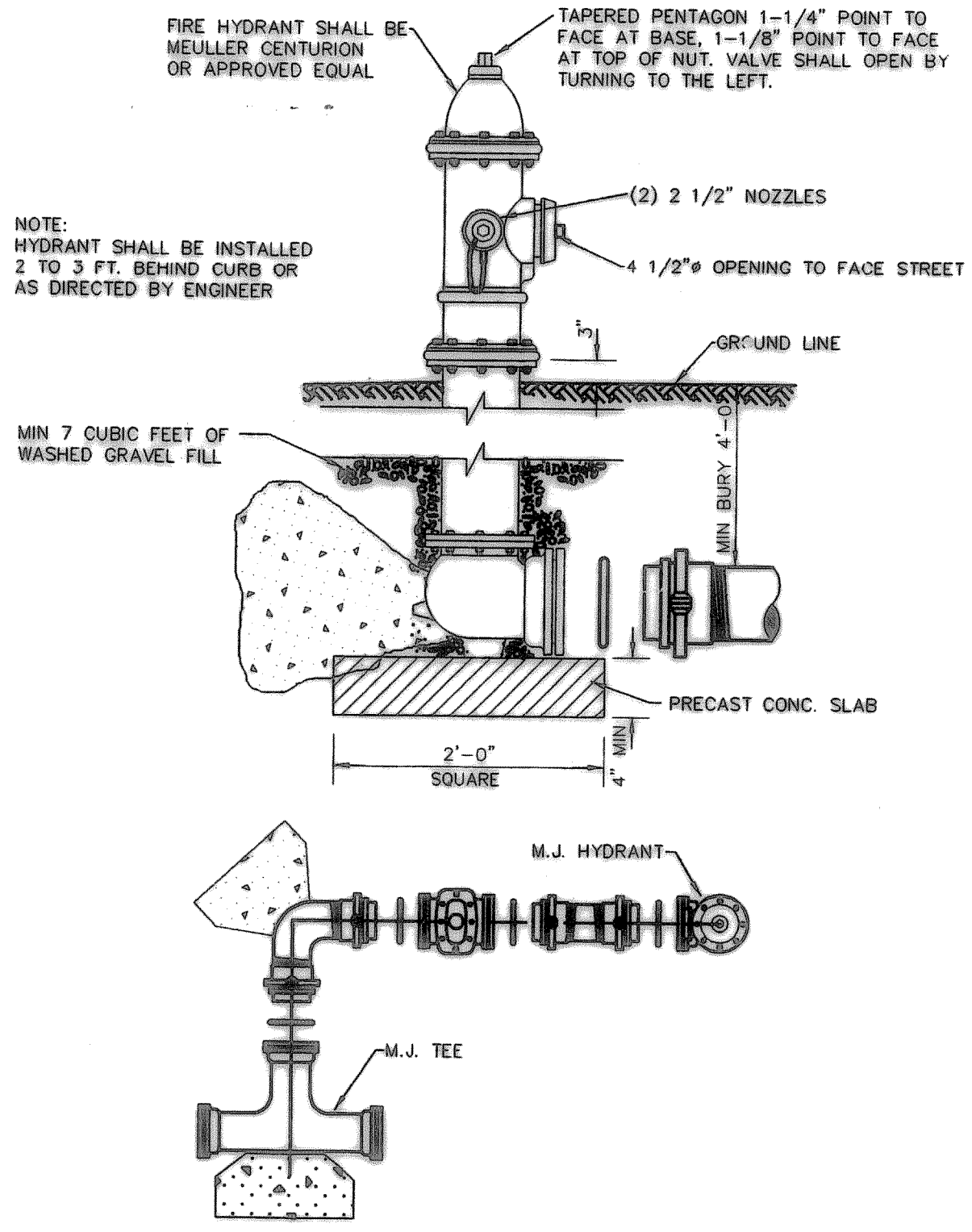


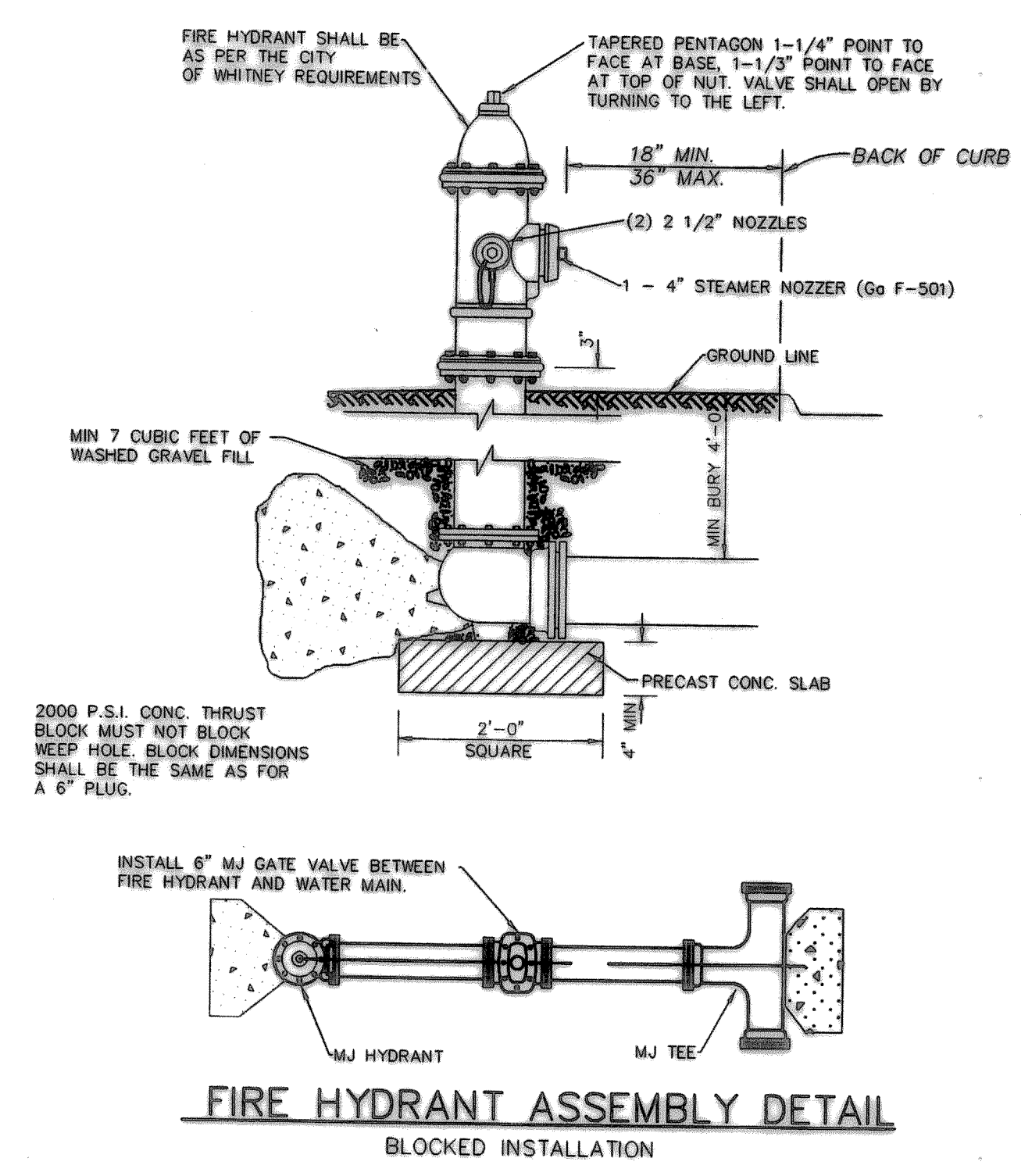
# ROCKWALL HIGH SCHOOL ADDITIONS ROCKWALL INDEPENDENT SCHOOL DISTRICT TEXAS ROCKWALL, TEXAS



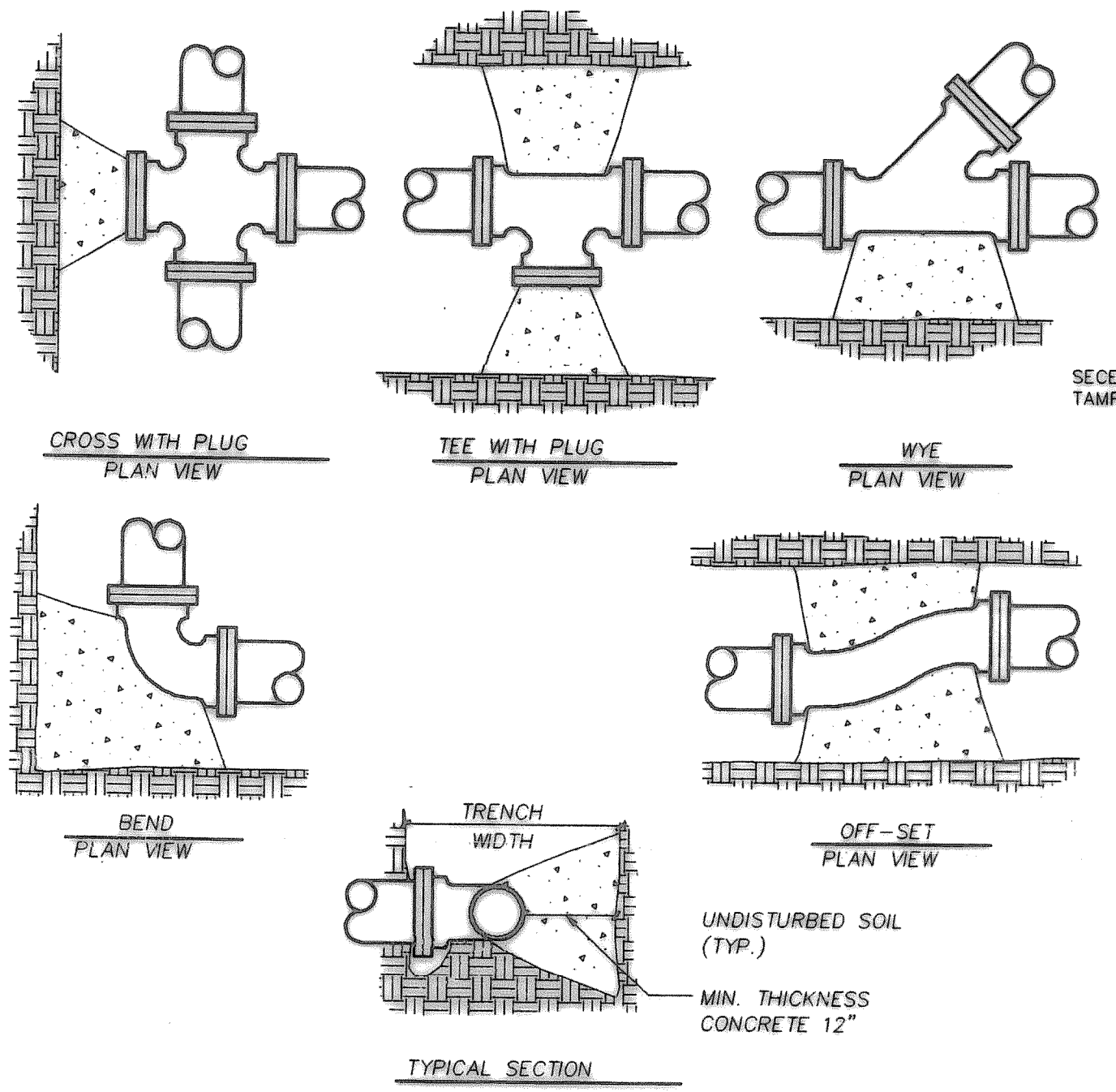
**SHW Group Inc.**  
 Architects + Engineers



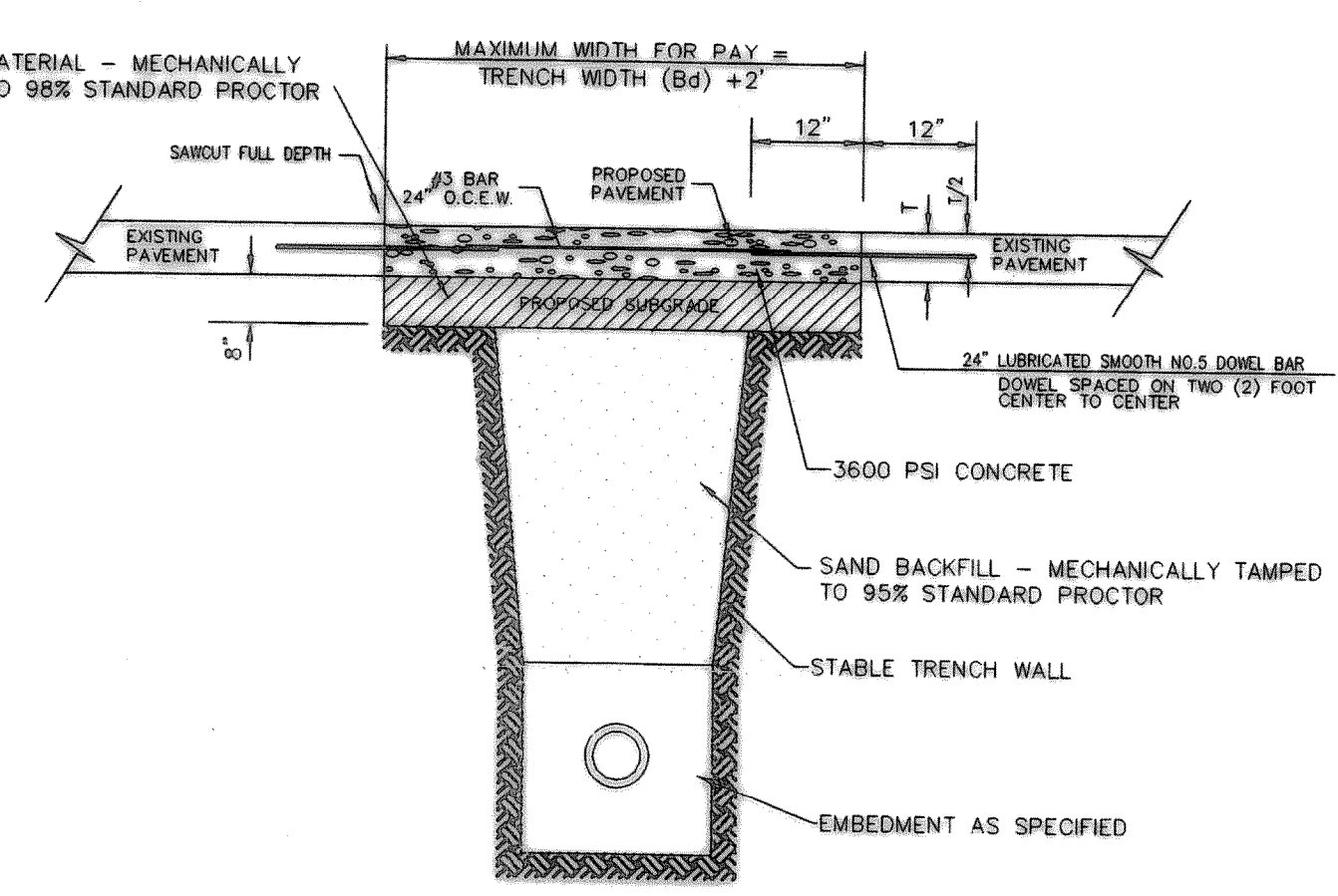
**FIRE HYDRANT ASSEMBLY DETAIL**  
 RESTRAINED JOINT INSTALLATION  
 NOTE: USE WHERE THERE IS INSUFFICIENT UNDISTURBED TRENCH TO BLOCK HYDRANT.



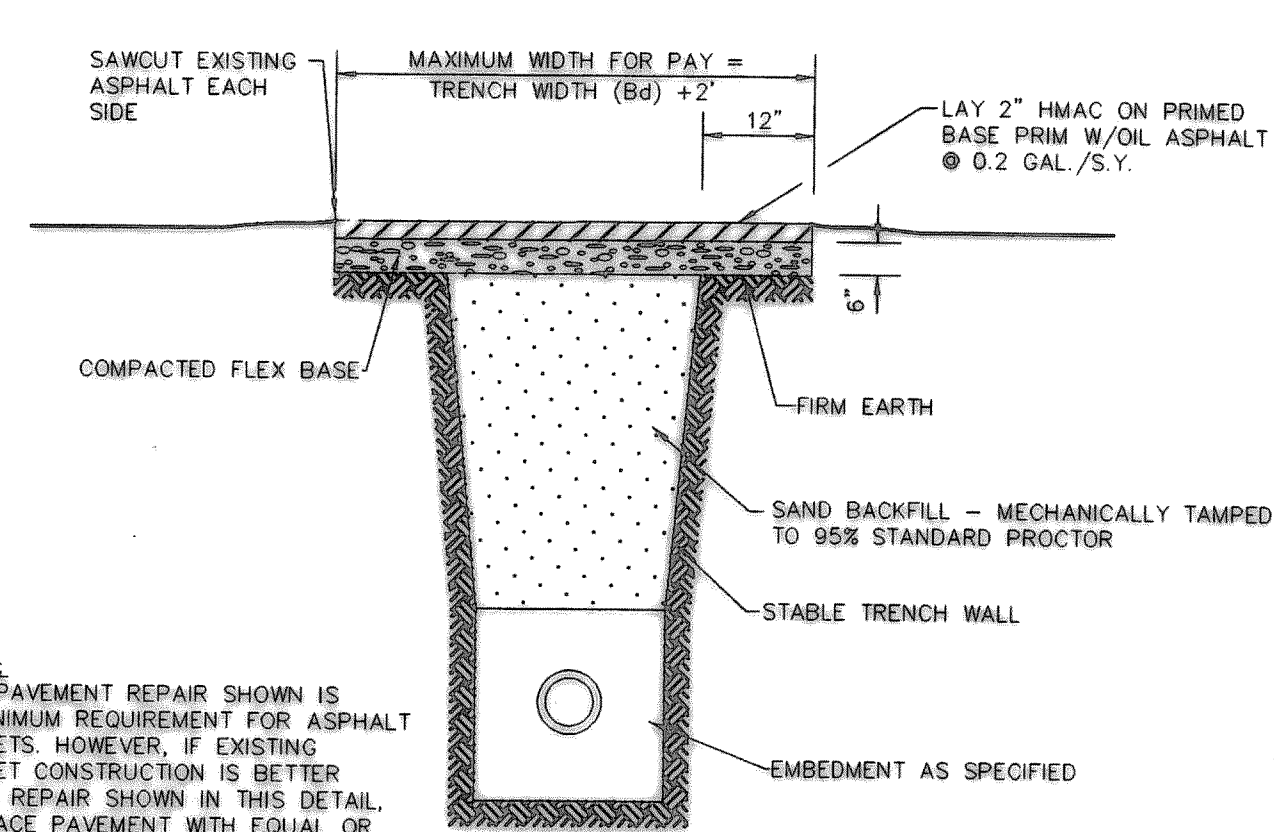
**FIRE HYDRANT ASSEMBLY DETAIL**  
 BLOCKED INSTALLATION



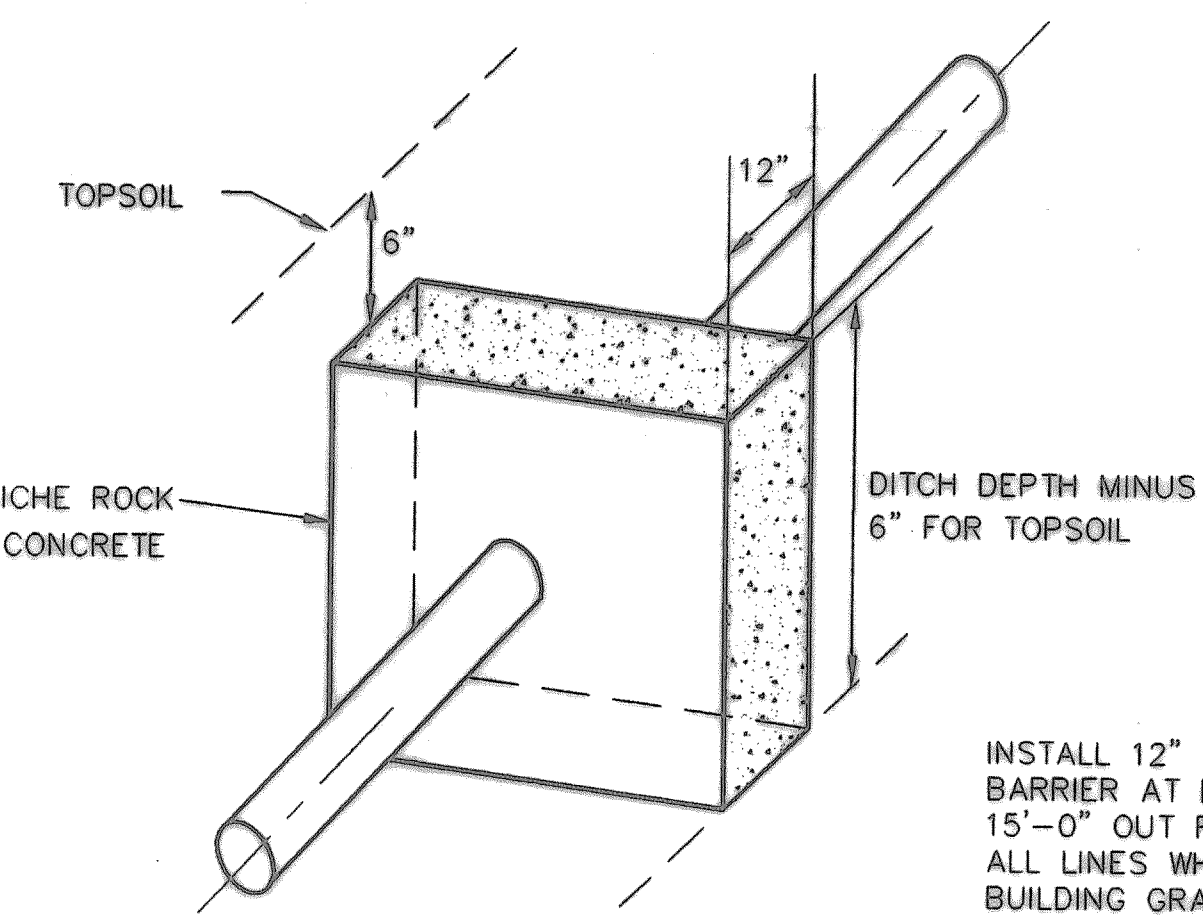
**TYPICAL THRUST BLOCKS**  
 NOT TO SCALE



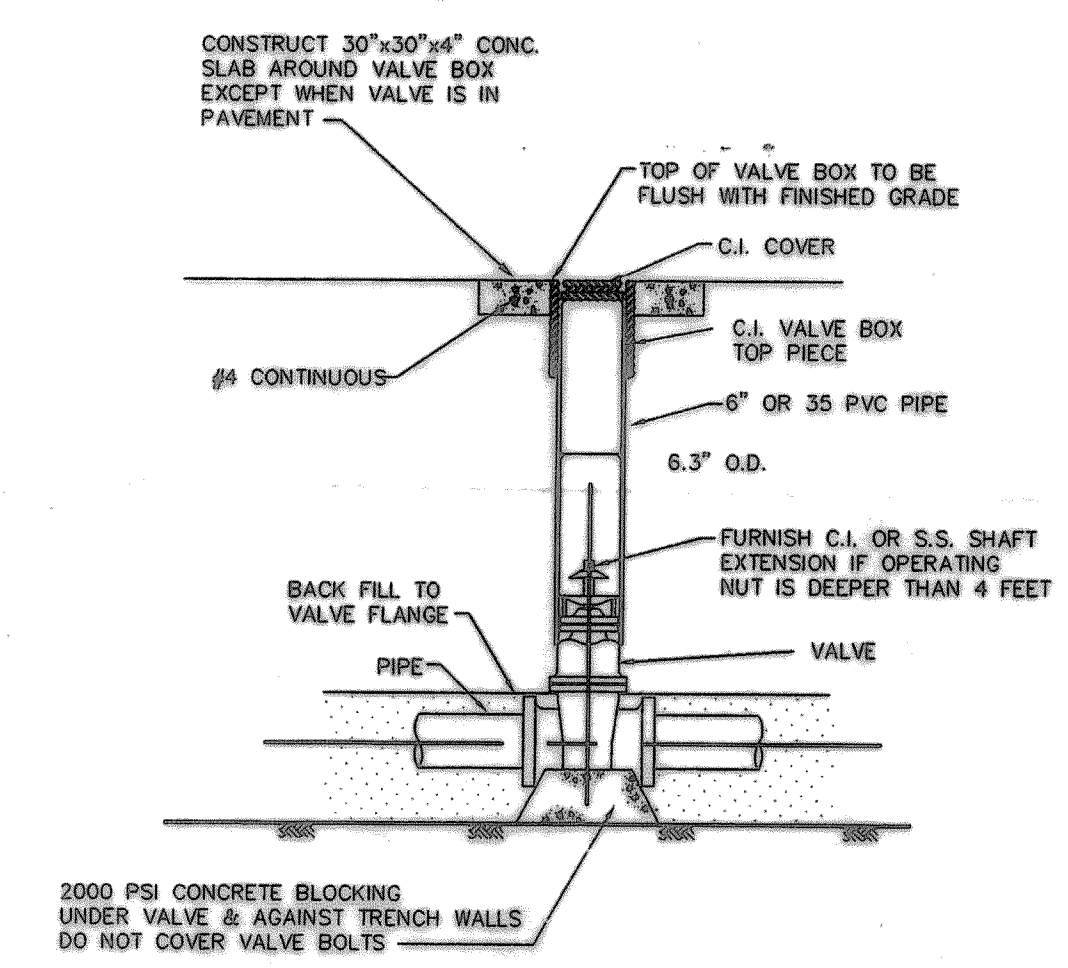
**EMBEDMENT UNDER CONCRETE STREETS & PAVEMENT REPAIR DETAIL**  
 N.T.S.



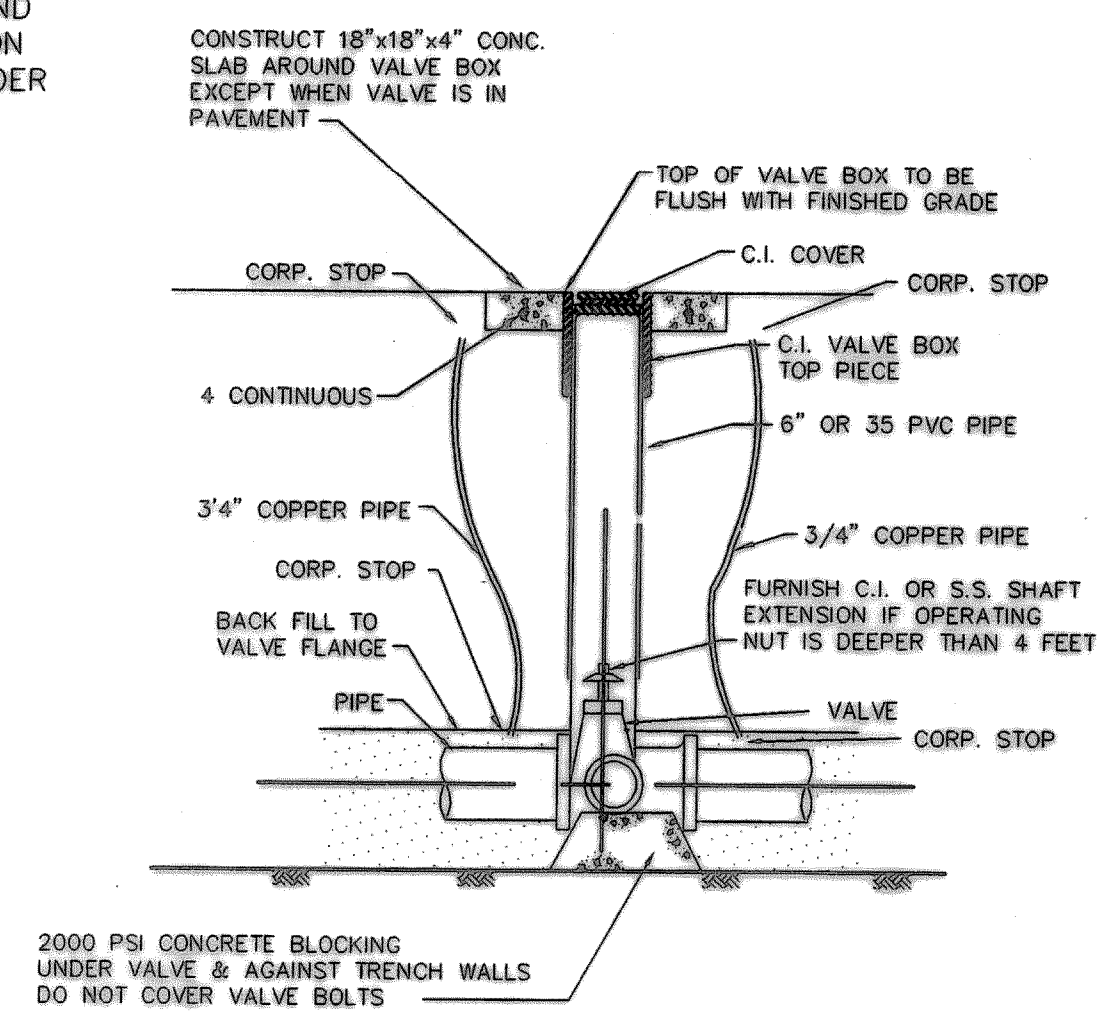
**EMBEDMENT UNDER ASPHALT STREETS & PAVEMENT REPAIR DETAIL**  
 N.T.S.



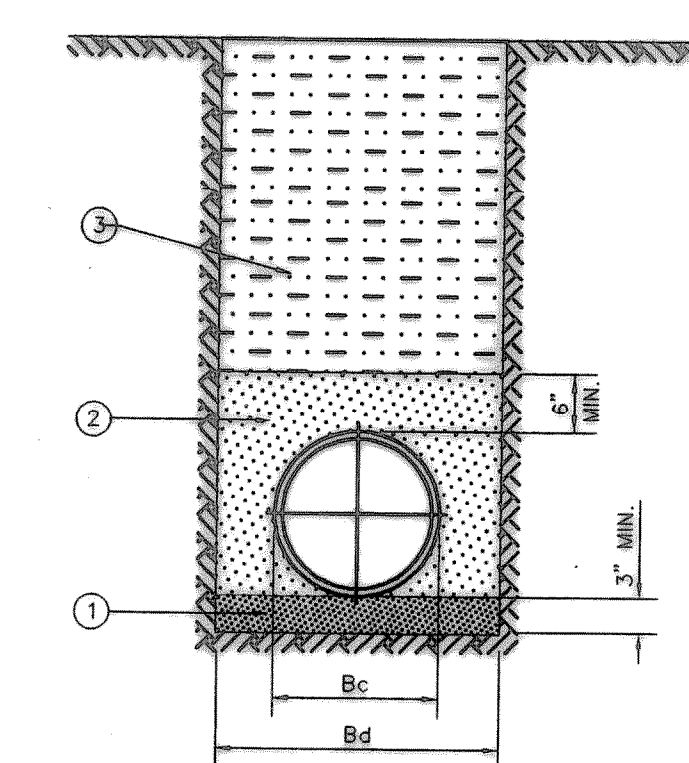
**IMPERVIOUS BARRIER**



**VALVE INSTALLATION DETAIL**

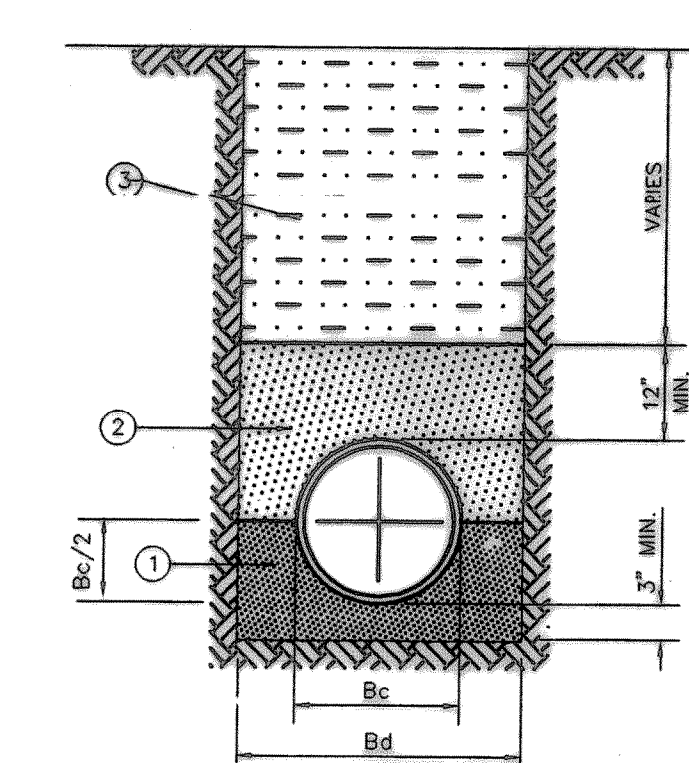


**BUTTERFLY VALVE INSTALLATION DETAIL**



1. GRANULAR MATERIAL (SAND) - TOP OF LAYER IS TO BE PLACED TO GRADE TO PROVIDE UNIFORM SUPPORT OF PIPE BARREL. EXCAVATE BELL HOLES. COMPACT TO 95% PROCTOR DENSITY.
2. GRANULAR MATERIAL (SAND) - COMPACT TO 90% STANDARD PROCTOR DENSITY EXCEPT UNDER STRUCTURES, ROADWAYS AND PAVEMENT WHERE 95% DENSITY IS REQUIRED.
3. SELECT MATERIAL FREE OF ROCKS, CLUMPS OR DEBRIS LARGER THAN 6" IN GREATEST DIMENSION. COMPACT TO 90% STANDARD PROCTOR DENSITY. UNDER STRUCTURES, ROADWAYS AND PAVEMENT, COMPACT TO 95% STANDARD PROCTOR DENSITY.

**CLASS "C-2" EMBEDMENT**  
 WATER AND SANITARY SEWER



1. FINE GRADATION CRUSHED STONE - TOP LAYER IS TO BE PLACED TO GRADE TO PROVIDE UNIFORM SUPPORT OF PIPE BARREL. EXCAVATE BELL HOLES.
2. SELECT MATERIAL FREE OF ROCKS, CLUMPS OR DEBRIS LARGER THAN 6" IN GREATEST DIMENSION. COMPACT TO 90% STANDARD PROCTOR DENSITY. UNDER STRUCTURES, ROADWAYS AND PAVEMENT, COMPACT TO 95% STANDARD PROCTOR DENSITY.
3. SELECT MATERIAL FREE OF ROCKS, CLUMPS OR DEBRIS LARGER THAN 6" IN GREATEST DIMENSION. COMPACT TO 90% STANDARD PROCTOR DENSITY. UNDER STRUCTURES, ROADWAYS AND PAVEMENT, COMPACT TO 95% STANDARD PROCTOR DENSITY.

**CLASS "B+" EMBEDMENT**  
 ROOF DRAIN LINES, FORCE MAIN AND STORM SEWER LINES

**UTILITY DETAILS**  
 AS SHOWN