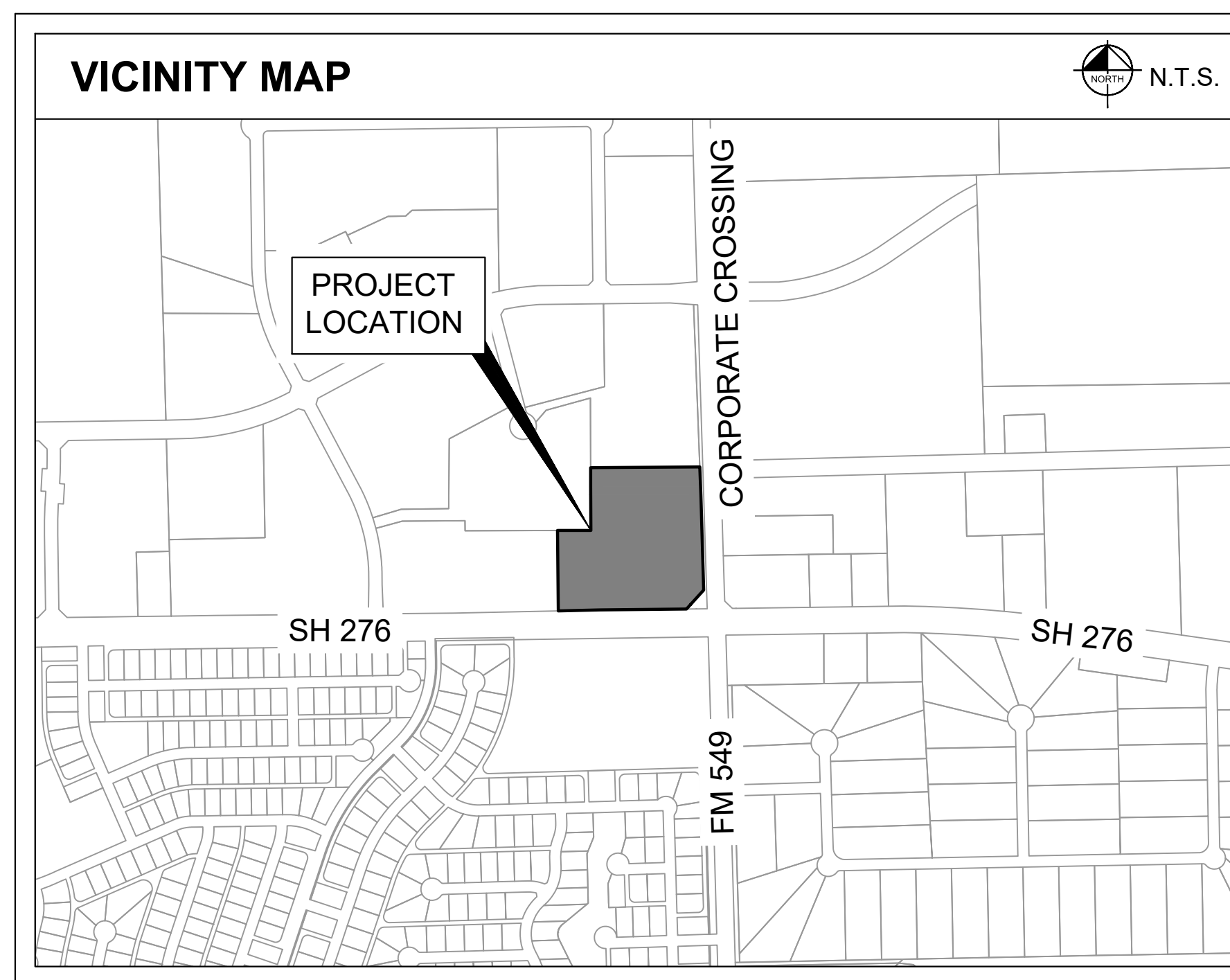


# LANDSCAPE CONSTRUCTION PLANS FOR TECHNOLOGY PARK POND DESIGN AND ONSITE GRADING IMPROVEMENTS LOT 8, BLOCK A

AT THE  
NORTHWEST CORNER OF SH 276 & CORPORATE CROSSING,  
ROCKWALL COUNTY, TEXAS

## PLANS SUBMITTAL/REVIEW LOG

FIRST CITY SUBMITTAL -NOT FOR CONSTRUCTION	10/09/2024
SECOND CITY SUBMITTAL -NOT FOR CONSTRUCTION	03/28/2025
THIRD CITY SUBMITTAL -NOT FOR CONSTRUCTION	05/30/2025
FOURTH CITY SUBMITTAL -NOT FOR CONSTRUCTION	06/18/2025



LANDSCAPE SHEET LIST TABLE	
Sheet Number	Sheet Title
LC 0.00	COVER SHEET
TP 0.00	KEY MAP
TP 1.00	TREE PRESERVATION & REMOVAL PLAN
TP 2.00	TREE PRESERVATION DETAILS & NOTES
LP 0.00	PLANTING SCHEDULE & NOTES
LP 1.00	LANDSCAPE PLAN
LP 2.00	PLANTING DETAILS
LP 2.01	PLANTING DETAILS
LP 2.02	PLANTING DETAILS

## OWNER



**ROCKWALL ECONOMIC  
DEVELOPMENT CORPORATION**  
2610 OBSERVATION TRAIL, SUITE 104  
ROCKWALL, TX 75032  
CONTACT: MATT WAVERING

## LANDSCAPE ARCHITECT



2500 PACIFIC AVENUE, SUITE 1100  
DALLAS, TX 77526  
PHONE: (972) 910 2925  
CONTACT: BEN RANKIN, PLA

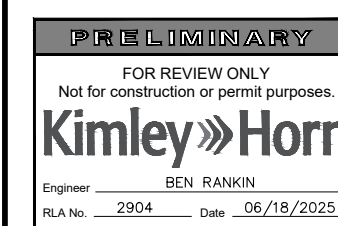
ROCKWALL TECHNOLOGY  
PARK, BLOCK A, LOT 8

JUNE 2025

**Kimley»Horn**

13455 NOEL RD. TWO GALLERIA OFFICE TOWER  
SUITE 700 DALLAS, TX 75240  
PHONE: 972-770-1900 FAX: 972-239-3820  
WWW.KIMLEY-HORN.COM TX F-928

© 2024 KIMLEY-HORN AND ASSOCIATES, INC.



KHA PROJECT 064584405	DATE 06/18/2025	SCALE AS SHOWN	DESIGNED BY BLR	DRAWN BY MLM	CHECKED BY BLR
--------------------------	--------------------	-------------------	--------------------	-----------------	-------------------

TECHNOLOGY PARK  
POND  
PREPARED FOR  
ROCKWALL ECONOMIC  
DEVELOPMENT CORPORATION  
CITY OF ROCKWALL, TX

COVERSHEET

SHEET NUMBER  
LC 0.00

No.	REVISIONS	DATE	BY

This document, together with the concepts and design presented herein, is an instrument of service, is intended only for the specific purpose and client for which it was prepared. Release of said instrument without written authorization and adoption by Kimley-Horn and Associates, Inc. shall be without liability to Kimley-Horn and Associates, Inc.  
 Images: Kimley-Horn & Associates - Kimley-Horn & Associates  
 Plotted by: LANS DANIEL 06/18/2025 1:05 PM  
 Plot Name: LC 000.DWG (LC 0.00)





IMAGES: © 2024 KIMLEY-HORN AND ASSOCIATES, INC. DATE: 06/18/2025  
 PLOTTED BY: JUSTIN DAVIS DATE: 06/18/2025 11:59 AM  
 LAYOUT: DANIEL WILSON DATE: 06/18/2025 11:57 PM  
 USER: DANIEL WILSON DATE: 06/18/2025 11:57 PM  
 DRAWING: DETENTION POND LOT (LOT 8) DATE: 06/18/2025 11:57 PM  
 PROJECT: TECHNOLOGY PARK POND PREPARED FOR ROCKWALL ECONOMIC DEVELOPMENT CORPORATION CITY OF ROCKWALL, TX  
 SHEET: TREE PRESERVATION DETAILS & NOTES  
 SCALE: AS SHOWN  
 DESIGNED BY: BLR  
 DRAWN BY: MLM  
 CHECKED BY: BLR  
 KHA PROJECT: 064584405  
 DATE: 06/18/2025  
 SCALE: AS SHOWN  
 DESIGNED BY: BLR  
 DRAWN BY: MLM  
 CHECKED BY: BLR

TAG#	DBH	COMMON NAME	SCIENTIFIC NAME	CONDITION	MULTIPLE-STEMMED
5251	10.2	live oak	<i>Quercus virginiana</i>	Healthy	Single
5252	8.7	live oak	<i>Quercus virginiana</i>	Healthy	Single
5253	13.7	live oak	<i>Quercus virginiana</i>	Healthy	Single
5254	18.9	eastern redcedar	<i>Juniperus virginiana</i>	Healthy	Multi
5255	11.8	live oak	<i>Quercus virginiana</i>	Healthy	Single
5256	11.4	live oak	<i>Quercus virginiana</i>	Healthy	Single
Tags 5257-5258 were not used.					
5259	18.2	Osage-orange	<i>Maclura pomifera</i>	Healthy	Multi
5260	28.3	Osage-orange	<i>Maclura pomifera</i>	Healthy	Multi
5261	11.6	honey locust	<i>Gleditsia triacanthos</i>	Declining	Multi
5262	9.9	Osage-orange	<i>Maclura pomifera</i>	Healthy	Multi
Tags 5263-5265 were not used.					
5266	10.2	black willow	<i>Salix nigra</i>	Declining	Single
5267	13.0	hackberry	<i>Celtis laevigata</i>	Forked	Single
5268	13.1	black willow	<i>Salix nigra</i>	Hazard	Single
5269	15.3	eastern redcedar	<i>Juniperus virginiana</i>	Healthy	Multi
5270	11.0	black willow	<i>Salix nigra</i>	Declining	Single
5271	18.8	hackberry	<i>Celtis laevigata</i>	Healthy	Single
5272	7.2	eastern redcedar	<i>Juniperus virginiana</i>	Healthy	Single
Tags 5273-5274 were not used.					
5275	8.3	eastern redcedar	<i>Juniperus virginiana</i>	Healthy	Multi
5276	6.8	hackberry	<i>Celtis laevigata</i>	Healthy	Multi
Tag 5277 was not used.					
5278	9.1	eastern redcedar	<i>Juniperus virginiana</i>	Healthy	Multi
5279	6.3	hackberry	<i>Celtis laevigata</i>	Healthy	Single
5280	6.2	eastern redcedar	<i>Juniperus virginiana</i>	Healthy	Single
Tags 5281-5283 were not used.					
5284	7.4	hackberry	<i>Celtis laevigata</i>	Healthy	Single
Tag 5285 was not used.					
5286	9.5	eastern cottonwood	<i>Populus deltoides</i>	Healthy	Single
5287	8.1	hackberry	<i>Celtis laevigata</i>	Healthy	Single
5288	20.3	Osage-orange	<i>Maclura pomifera</i>	Healthy	Multi
5289	8.6	Osage-orange	<i>Maclura pomifera</i>	Healthy	Multi
Tag 5290 was not used.					
5291	10.7	honey locust	<i>Gleditsia triacanthos</i>	Declining	Multi
5292	14.6	Osage-orange	<i>Maclura pomifera</i>	Healthy	Multi
Tag 5293 was not used.					
5294	8.5	live oak	<i>Quercus virginiana</i>	Healthy	Single
5295	6.5	live oak	<i>Quercus virginiana</i>	Healthy	Single
5296	9.9	live oak	<i>Quercus virginiana</i>	Healthy	Forked
5297	10.1	live oak	<i>Quercus virginiana</i>	Healthy	Single
5298	9.0	live oak	<i>Quercus virginiana</i>	Healthy	Single
Tag 5299 was not used.					
5300	22.6	Osage-orange	<i>Maclura pomifera</i>	Declining	Multi
Tags 5301-5400 were not used.					
5401	15.8	Osage-orange	<i>Maclura pomifera</i>	Healthy	Forked
Tag 5402 was not used.					
5403	17.4	Osage-orange	<i>Maclura pomifera</i>	Healthy	Multi
5404	7.5	honey locust	<i>Gleditsia triacanthos</i>	Healthy	Single
5405	16.3	Osage-orange	<i>Maclura pomifera</i>	Healthy	Multi
Tag 5406 was not used.					
5407	14.8	Osage-orange	<i>Maclura pomifera</i>	Healthy	Multi
5408	22.9	Osage-orange	<i>Maclura pomifera</i>	Healthy	Multi
5409	16.6	eastern redcedar	<i>Juniperus virginiana</i>	Healthy	Multi
5410	27.2	Osage-orange	<i>Maclura pomifera</i>	Healthy	Multi
5411	20.2	Osage-orange	<i>Maclura pomifera</i>	Healthy	Multi
5412	19.1	Osage-orange	<i>Maclura pomifera</i>	Healthy	Multi
5413	8.0	honey locust	<i>Gleditsia triacanthos</i>	Healthy	Single
5414	10.9	Osage-orange	<i>Maclura pomifera</i>	Healthy	Multi
5415	9.0	eastern redcedar	<i>Juniperus virginiana</i>	Healthy	Single
Tag 5416 was not used.					
5417	9.8	eastern redcedar	<i>Juniperus virginiana</i>	Healthy	Multi
5418	12.4	eastern redcedar	<i>Juniperus virginiana</i>	Healthy	Multi
5419	7.6	eastern redcedar	<i>Juniperus virginiana</i>	Healthy	Single
5420	16.3	Osage-orange	<i>Maclura pomifera</i>	Healthy	Multi
5421	10.9	eastern redcedar	<i>Juniperus virginiana</i>	Healthy	Multi
5422	18.9	eastern redcedar	<i>Juniperus virginiana</i>	Healthy	Multi
5423	8.6	eastern redcedar	<i>Juniperus virginiana</i>	Healthy	Single
Tag 5424 was not used.					
5425	13.2	Osage-orange	<i>Maclura pomifera</i>	Healthy	Multi
5426	8.0	hackberry	<i>Celtis laevigata</i>	Healthy	Single
5427	12.8	Osage-orange	<i>Maclura pomifera</i>	Healthy	Multi
5428	7.8	Osage-orange	<i>Maclura pomifera</i>	Healthy	Single
5429	6.7	eastern redcedar	<i>Juniperus virginiana</i>	Healthy	Single
5430	5.6	eastern redcedar	<i>Juniperus virginiana</i>	Healthy	Single
5431	14.8	eastern redcedar	<i>Juniperus virginiana</i>	Healthy	Multi
Tags 5432-5433 were not used.					
5434	17.3	eastern redcedar	<i>Juniperus virginiana</i>	Healthy	Multi
5435	10.6	eastern redcedar	<i>Juniperus virginiana</i>	Healthy	Forked
Tag 5436 was not used.					
5437	4.9	eastern redcedar	<i>Juniperus virginiana</i>	Healthy	Single
Tags 5438-9517 were not used.					
9518	6.3	southern magnolia	<i>Magnolia grandiflora</i>	Healthy	Multi
9519	7.2	southern magnolia	<i>Magnolia grandiflora</i>	Healthy	Forked
9520	7.1	southern magnolia	<i>Magnolia grandiflora</i>	Healthy	Forked
9521	4.8	southern magnolia	<i>Magnolia grandiflora</i>	Healthy	Single
9522	13.9	eastern redcedar	<i>Juniperus virginiana</i>	Healthy	Multi
9523	4.7	Hercules-club	<i>Zanthoxylum clava-herculis</i>	Declining	Single
9524	11.2	eastern redcedar	<i>Juniperus virginiana</i>	Healthy	Multi
9525	14.2	eastern redcedar	<i>Juniperus virginiana</i>	Healthy	Single
9526	14.5	eastern redcedar	<i>Juniperus virginiana</i>	Healthy	Forked
9527	21.3	eastern redcedar	<i>Juniperus virginiana</i>	Hazard	Forked
9528	16.2	hackberry	<i>Celtis laevigata</i>	Healthy	Multi
9529	23.2	hackberry	<i>Celtis laevigata</i>	Healthy	Multi
9530	23.8	hackberry	<i>Celtis laevigata</i>	Healthy	Forked
9531	18.8	hackberry	<i>Celtis laevigata</i>	Healthy	Forked
9532	13.7	hackberry	<i>Celtis laevigata</i>	Healthy	Multi
9533	11.2	hackberry	<i>Celtis laevigata</i>	Healthy	Single
9534	16.5	hackberry	<i>Celtis laevigata</i>	Healthy	Multi
9535	11.7	hackberry	<i>Celtis laevigata</i>	Healthy	Multi
9536	14.6	hackberry	<i>Celtis laevigata</i>	Healthy	Single
9537	7.7	Hercules-club	<i>Zanthoxylum clava-herculis</i>	Healthy	Single
9538	10.0	Hercules-club	<i>Zanthoxylum clava-herculis</i>	Healthy	Forked
9539	11.3	hackberry	<i>Celtis laevigata</i>	Healthy	Single

TAG#	DBH	COMMON NAME	SCIENTIFIC NAME	CONDITION	MULTIPLE-STEMMED
9540	11.0	hackberry	<i>Celtis laevigata</i>	Healthy	Multi
9541	15.6	hackberry	<i>Celtis laevigata</i>	Healthy	Single
9542	4.4	Hercules-club	<i>Zanthoxylum clava-herculis</i>	Healthy	Single
9543	5.8	Hercules-club	<i>Zanthoxylum clava-herculis</i>	Healthy	Single
9544	12.8	hackberry	<i>Celtis laevigata</i>	Healthy	Multi
9545	4.7	Hercules-club	<i>Zanthoxylum clava-herculis</i>	Healthy	Single
9546	15.8	hackberry	<i>Celtis laevigata</i>	Healthy	Single
9547	4.2	Hercules-club	<i>Zanthoxylum clava-herculis</i>	Healthy	Single
9548	13.3	hackberry	<i>Celtis laevigata</i>	Healthy	Forked
9549	15.2	hackberry	<i>Celtis laevigata</i>	Healthy	Multi
9550	14.4	hackberry	<i>Celtis laevigata</i>	Healthy	Multi
9551	11.6	hackberry	<i>Celtis laevigata</i>	Healthy	Single
9552	11.0	hackberry	<i>Celtis laevigata</i>	Healthy	Single
9553	11.7	hackberry	<i>Celtis laevigata</i>	Healthy	Single
9554	13.9	hackberry	<i>Celtis laevigata</i>	Healthy	Multi
9555	14.9	hackberry	<i>Celtis laevigata</i>	Healthy	Multi
9556	11.6	hackberry	<i>Celtis laevigata</i>	Declining	Single
9557	12.3	hackberry	<i>Celtis laevigata</i>	Healthy	Forked
9558	13.3	hackberry	<i>Celtis laevigata</i>	Declining	Single
9559	30.6	hackberry	<i>Celtis laevigata</i>	Healthy	Multi
9560	16.1	hackberry	<i>Celtis laevigata</i>	Healthy	Multi
9561	14.8	live oak	<i>Quercus virginiana</i>	Healthy	Single
9562	12.1	live oak	<i>Quercus virginiana</i>	Healthy	Single
9563	9.6	live oak	<i>Quercus virginiana</i>	Healthy	Single
9564	11.2	live oak	<i>Quercus virginiana</i>	Healthy	Single
9565	11.9	live oak	<i>Quercus virginiana</i>	Healthy	Single
9566	11.3	live oak	<i>Quercus virginiana</i>	Healthy	Single
9567	11.7	live oak	<i>Quercus virginiana</i>	Healthy	Single
9568	20.1	hackberry	<i>Celtis laevigata</i>	Healthy	Forked
9569	13.8	hackberry	<i>Celtis laevigata</i>	Healthy	Multi
9570	12.2	hackberry	<i>Celtis laevigata</i>	Healthy	Forked
9571	8.8	chittamwood	<i>Sideroxylon lanuginosum</i>	Declining	Single
9572	13.6	hackberry	<i>Celtis laevigata</i>	Healthy	Single
9573	12.2	hackberry	<i>Celtis laevigata</i>	Healthy	Single
9574	11.9	hackberry	<i>Celtis laevigata</i>	Healthy	Multi
9575	11.8	eastern redcedar	<i>Juniperus virginiana</i>	Healthy	Multi
9576	14.1	eastern redcedar	<i>Juniperus virginiana</i>	Healthy	Multi
9577	11.6	eastern redcedar	<i>Juniperus virginiana</i>	Healthy	Multi
9578	11.2	eastern redcedar	<i>Juniperus virginiana</i>	Healthy	Multi
9579	14.4	eastern redcedar	<i>Juniperus virginiana</i>	Healthy	Multi
9580	16.7	eastern redcedar	<i>Juniperus virginiana</i>	Healthy	Forked
9581	12.7	eastern redcedar	<i>Juniperus virginiana</i>	Healthy	Single
9582	12.1	eastern redcedar	<i>Juniperus virginiana</i>	Healthy	Multi
9583	14.2	eastern redcedar	<i>Juniperus virginiana</i>	Declining	Multi
9584	5.8	Hercules-club	<i>Zanthoxylum clava-herculis</i>	Healthy	Single
9585	8.8	live oak	<i>Quercus virginiana</i>	Healthy	Single
9586	7.7	live oak	<i>Quercus virginiana</i>	Healthy	Single
9587	5.0	live oak	<i>Quercus virginiana</i>	Healthy	Single
9588	6.4	live oak	<i>Quercus virginiana</i>	Healthy	Single
9589	7.7	live oak	<i>Quercus virginiana</i>	Healthy	Single
9590	12.7	hackberry	<i>Celtis laevigata</i>	Healthy	Multi
9591	14.6	hackberry	<i>Celtis laevigata</i>	Healthy	Multi
9592	11.2	hackberry	<i>Celtis laevigata</i>	Healthy	Single
9593	14.3	hackberry	<i>Celtis laevigata</i>	Healthy	Forked
9594	12.2	eastern redcedar	<i>Juniperus virginiana</i>	Healthy	Single
9595	13.9	hackberry	<i>Celtis laevigata</i>	Healthy	Multi
9596	8.1	Hercules-club	<i>Zanthoxylum clava-herculis</i>	Healthy	Single
9597	8.4	chittamwood	<i>Sideroxylon lanuginosum</i>	Healthy	Single
9598	16.3	hackberry	<i>Celtis laevigata</i>	Healthy	Multi
9599	11.0	hackberry	<i>Celtis laevigata</i>	Healthy	Single
9600	11.1	hackberry	<i>Celtis laevigata</i>	Healthy	Multi
9601	15.9	eastern redcedar	<i>Juniperus virginiana</i>	Healthy	Multi
9602	12.6	eastern redcedar	<i>Juniperus virginiana</i>	Healthy	Multi
9603	11.2	eastern redcedar	<i>Juniperus virginiana</i>	Healthy	Forked
9604	13.0	eastern redcedar	<i>Juniperus virginiana</i>	Healthy	Forked
9605	12.4	eastern redcedar	<i>Juniperus virginiana</i>	Healthy	Multi
9606	11.1	eastern redcedar	<i>Juniperus virginiana</i>	Healthy	Single
9607	12.3	eastern redcedar	<i>Juniperus virginiana</i>	Healthy	Forked
9608	16.3	eastern redcedar	<i>Juniperus virginiana</i>	Healthy	Multi
9609	11.9	eastern redcedar	<i>Juniperus virginiana</i>	Healthy	Multi
9610	15.2	eastern redcedar	<i>Juniperus virginiana</i>	Healthy	Multi
9611	13.8	eastern redcedar	<i>Juniperus virginiana</i>	Healthy	Forked
9612	11.2	eastern redcedar	<i>Juniperus virginiana</i>	Healthy	Multi
9613	11.5	eastern redcedar	<i>Juniperus virginiana</i>	Healthy	Multi
9614	11.7	eastern redcedar	<i>Juniperus virginiana</i>	Healthy	Multi
9615	11.1	eastern redcedar	<i>Juniperus virginiana</i>	Healthy	Multi
9616	13.6	eastern redcedar	<i>Juniperus virginiana</i>	Healthy	Forked
9617	12.6	eastern redcedar	<i>Juniperus virginiana</i>	Healthy	Multi
9618	12.2	eastern redcedar	<i>Juniperus virginiana</i>	Healthy	Multi
9619	10.1	live oak	<i>Quercus virginiana</i>	Healthy	Single
9620	13.7	eastern redcedar	<i>Juniperus virginiana</i>	Healthy	Multi
9621	11.4	eastern redcedar	<i>Juniperus virginiana</i>	Healthy	Single
9622	15.3	cedar elm	<i>Ulmus crassifolia</i>	Healthy	Forked

Kimley-Horn red tag series: 5251-5256; 5259-5262; 5266-5272; 5275-5276; 5278-5280; 5284; 5286-5289; 5291-5292; 5294-5298; 5300; 5401; 5403-5405; 5407-5415; 5417-5423; 5425-5431; 5434-5435; 5437; 9518-9622. Trees measuring 4-inches and larger DBH were tagg

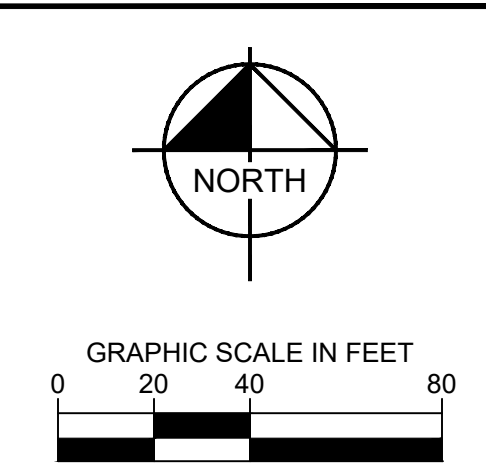
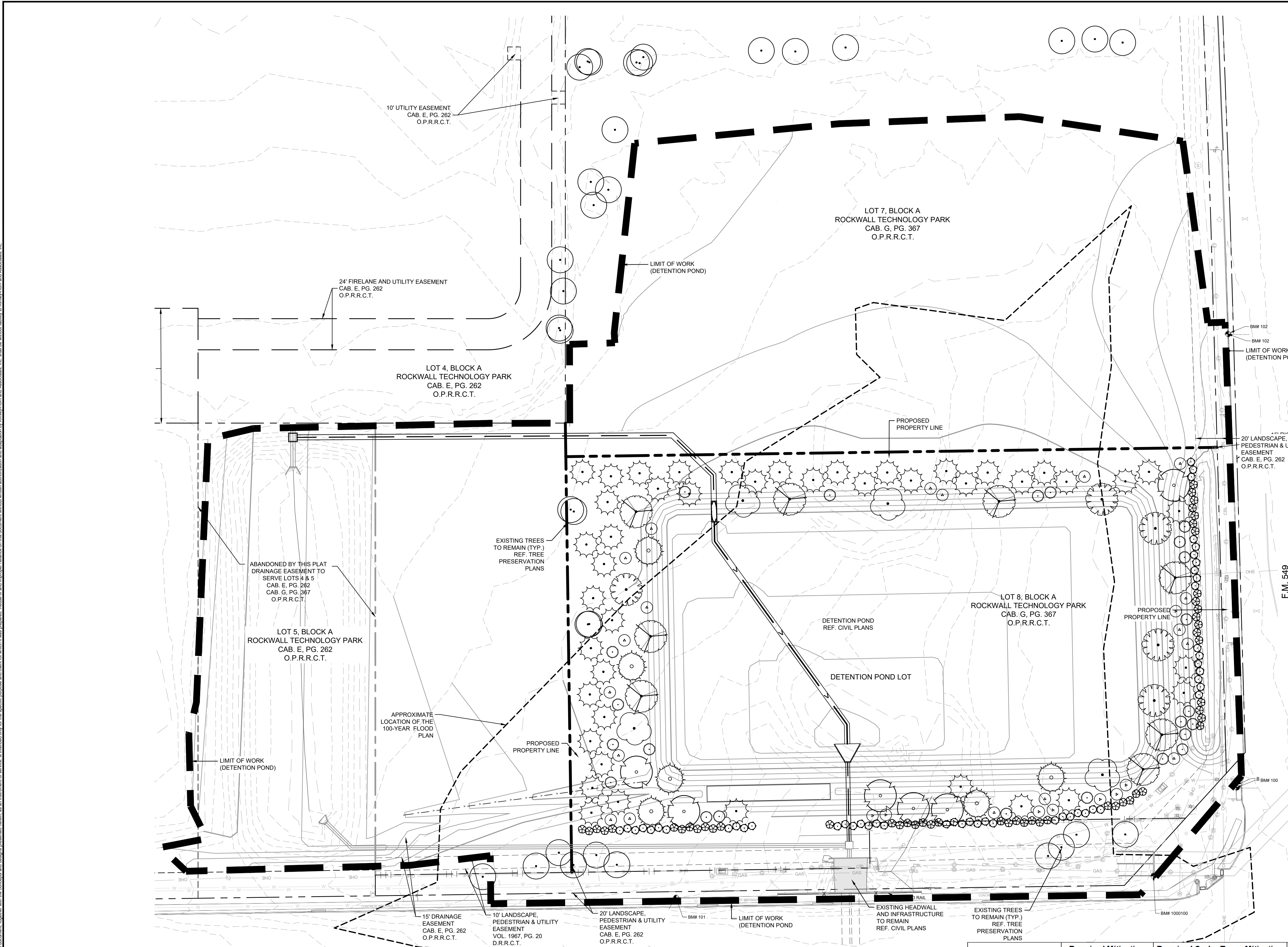
DETENTION POND LOT (LOT 8)							
Tree Types				TREES REMOVED			
COMMON NAME	SCIENTIFIC NAME	PRIMARY PROTECTED	SECONDARY PROTECTED	QTY.	CALIPER (Inches)	8' HEIGHT OR GREATER	MITIGATION INCHES REMOVED
BLACK WILLOW	SALIX NIGRA	X		3	34.3		34.3
EASTERN REDCEDAR	JUNIPERUS VIRGINIANA		X	3		1	4
HACKBERRY	CELTIS LAEVIGATA			3	38.6		
HONEY LOCUST	GLEDITSIA TRIACANTHOS			1	11.6		
LIVE OAK	QUERCUS VIRGINIANA	X		2	18.9		18.9
OSAGE-ORANGE	MACLURA POMIFERA			3	56.4		
<b>Total</b>				<b>15</b>	<b>159.8</b>	<b>1</b>	<b>57.2</b>

LOT 5							
Tree Types				TREES REMOVED			
COMMON NAME	SCIENTIFIC NAME	PRIMARY PROTECTED	SECONDARY PROTECTED	QTY.	CALIPER (Inches)	8' HEIGHT OR GREATER	MITIGATION INCHES REMOVED
EASTERN REDCEDAR	JUNIPERUS VIRGINIANA		X	5		3	12
HONEY LOCUST	GLEDITSIA TRIACANTHOS			1	8		
OSAGE-ORANGE	MACLURA POMIFERA			10	186.1		
<b>Total</b>				<b>16</b>	<b>194.1</b>	<b>3</b>	<b>12</b>

LOT 7							
Tree Types				TREES REMOVED			
COMMON NAME	SCIENTIFIC NAME	PRIMARY PROTECTED	SECONDARY PROTECTED	QTY.	CALIPER (Inches)	8' HEIGHT OR GREATER	MITIGATION INCHES REMOVED
EASTERN REDCEDAR	JUNIPERUS VIRGINIANA		X	28			



KIMLEY-HORN AND ASSOCIATES, INC. 13455 NOEL RD. TWO GALLERIA OFFICE TOWER SUITE 700 DALLAS, TX 75240  
 PHONE: 972.770.9300 FAX: 972.239.3820 WWW.KIMLEY-HORN.COM TX F-928 © 2024 KIMLEY-HORN AND ASSOCIATES, INC.



City of Rockwall Landscape Requirements		
TOTAL SITE AREA: 332,370 SF (7.63 ACRES); DETENTION POND TRACT AREA 162,332 SF (3.42 ACRES)		
Zoning: FM549 OVERLAY, PD-73, SH276 OVERLAY		
Landscape Buffers - FM 549 Overlay District (Article 5, Subsection 06.02, General Overlay District Standards)		
Required	Provided	
The minimum landscape buffer adjacent to Primary Roadways shall be as follows: Industrial/Office/Technology Land Uses 50-foot	15' wide landscape buffer along F.M. 549	15' wide landscape buffer along F.M. 549
All landscape buffers shall incorporate ground cover, a built-up berm and shrubbery or a combination thereof along the entire length of the frontage. Berms and shrubbery shall each have a minimum height of 30-inches and a maximum height of 48-inches.	Yes	Yes
Two (2) canopy trees and four (4) accent trees shall be planted per 100-foot of linear frontage along the primary roadway. The required landscape buffer shall incorporate one (1) additional cedar tree per 100-foot of linear of frontage along the Primary Roadway F.M. 549 (302 LF / 100) * 2 = 7 Canopy Trees (302 LF / 100) * 4 = 12 Accent Trees (302 LF / 100) = 3 Cedar Trees	6 Canopy Trees 12 Accent Trees 3 Cedar Trees	6 Canopy Trees 12 Accent Trees 3 Cedar Trees
Landscape Buffers - SH 276 Overlay District (Article 5, Subsection 06.02, General Overlay District Standards)		
The minimum landscape buffer adjacent to Primary Roadways shall be as follows: Industrial/Office/Technology Land Uses 50-foot	15' wide landscape buffer along S.H. 276	15' wide landscape buffer along S.H. 276
All landscape buffers shall incorporate ground cover, a built-up berm and shrubbery or a combination thereof along the entire length of the frontage. Berms and shrubbery shall each have a minimum height of 30-inches and a maximum height of 48-inches.	Yes	Yes
Two (2) canopy trees and four (4) accent trees shall be planted per 100-foot of linear frontage along the primary roadway. The required landscape buffer shall incorporate one (1) additional cedar tree per 100-foot of linear of frontage along the Primary Roadway S.H. 276 (488 LF / 100) * 2 = 10 Canopy Trees (488 LF / 100) * 4 = 20 Accent Trees (488 LF / 100) = 5 Cedar Trees	10 Canopy Trees 20 Accent Trees 5 Cedar Trees	10 Canopy Trees 20 Accent Trees 5 Cedar Trees
Landscape Screening (Article 08, Section 05, Subsection 05.02, Landscape Screening)		
Off-street loading docks and outside storage areas shall be screened from all public streets, open spaces, adjacent properties and any residential zoning. The screening must be in accordance with Subsection 01.05 Screening Standards, of Article 5, District Development Standards.	N/A	N/A
Trash/Recycling Enclosures shall be screened by a minimum 6' solid masonry dumpster enclosure that utilizes the same masonry material as the primary building and incorporates an opaque, self-latching gate.	N/A	N/A
Head in parking adjacent to a street shall incorporate a minimum of a 2' berm with mature evergreen shrubs along the entire adjacency of the parking areas	N/A	N/A
Landscape Requirements (Article 08, Section 05, Subsection 05.03, Landscape Screening)		
Light Industrial Districts shall have 15% of the total site area landscaped. A minimum of 100% of the total required landscaping shall be located in front of and along the side of buildings with street frontages.	N/A	N/A
Detention Basins (Article 08, Section 05, Subsection 05.03, Landscape Screening)		
Detention basins shall be landscaped in a natural manner using ground cover, grasses, shrubs, berms, accent and canopy trees. There shall be a minimum of 1 canopy tree per 750 SF and 1 accent tree per 1,500 SF of detention area.	120 canopy trees 60 accent trees	50 canopy trees 17 accent trees
89,703 SF / 750 SF = 120 canopy trees		
89,703 SF / 1,500 SF = 60 accent trees		
Parking Lot Landscaping (Article 08, Section 05, Subsection 05.03, Landscape Screening)		
If the parking and maneuvering space exceeds 20,000 SF, one large canopy tree for every 10 parking spaces shall be required to be planted internal to the parking areas	N/A	N/A
No required parking space may be located more than 80 feet from the trunk of a canopy tree	Yes	Yes

**NOTE:**

- CONTRACTOR TO SEED LIMITS OF DISTURBANCE.
- ALL REQUIRED LANDSCAPE AREAS SHALL BE PROVIDED WITH A TEMPORARY AUTOMATIC UNDERGROUND IRRIGATION SYSTEM WITH RAIN AND FREEZE SENSORS. THE IRRIGATION SYSTEM SHALL BE DESIGNED BY A QUALIFIED PROFESSIONAL, INSTALLED BY A LICENSED IRRIGATOR, AND COMPLY WITH THE CITY OF ROCKWALL IRRIGATION STANDARDS.
- CONTRACTOR TO ESTABLISH, MAINTAIN, AND IRRIGATE ALL SEEDING/SEEDING AREAS UNTIL A "PERMANENT STAND OF GRASS" IS OBTAINED AT WHICH TIME THE PROJECT WILL BE ACCEPTED BY THE CITY. A "STAND OF GRASS" SHALL CONSIST OF 75% TO 80% COVERAGE AND A MINIMUM OF ONE-INCH (1") IN HEIGHT AS DETERMINED BY THE CITY. (SECTION 4.2, ENGINEERING STANDARDS OF DESIGN AND CONSTRUCTION).

PLANT SCHEDULE							
SYMBOL	CODE	QTY	BOTANICAL / COMMON NAME	ROOT	CAL.	SIZE	REMARKS
<b>TREES</b>							
	UP	4	ULMUS PARVIFOLIA SEMPERVIRENS 'ATHENA' / ATHENA LACEBARK ELM	B & B	4" CAL.	12' - 14' HT.	STRONG CENTRAL LEADER, FULL
	TD	6	TAXODIUM DISTICHUM / BALD CYPRESS	B & B	4" CAL.	16' - 18' HT.	SINGLE STRAIGHT CENTRAL LEADER, FULL AND MATCHING
	QM	8	QUERCUS MACROCARPA / BUR OAK	B & B	4" CAL.	12' - 14' HT.	STRONG, CENTRAL LEADER, FULL
	QC	6	QUERCUS MUEHLENBERGII / CHINKAPIN OAK	B & B	4" CAL.	16' - 18' HT.	SINGLE STRAIGHT CENTRAL LEADER, FULL AND MATCHING
	CL	23	CHILOPSIS LINEARIS / DESERT WILLOW	CONT.	2" CAL.	8' - 10' HT.	SINGLE STRAIGHT CENTRAL LEADER, FULL AND MATCHING

Lot	Required Mitigation (Inches removed) (1" = 1")	Required Cedar Trees Mitigation (8' Height or Greater) (1x4" Cal Tree)	Total Mitigation Inches Removed	Provided Trees (Inches)	Total Excess (Inches)
Detention Pond Lot (Lot 8)	53.2	1	57.2	390	332.8 Over
Lot 5	0	3	12	0	12 Under
Lot 7	0	28	84	0	84 Under

SYMBOL	CODE	QTY	BOTANICAL / COMMON NAME	CONT.	SIZE	SPACING	REMARKS
	JE	44	JUNIPERUS VIRGINIANA / EASTERN RED CEDAR	B & B	4" CAL.	8' - 14' HT.	SINGLE STRAIGHT CENTRAL LEADER, FULL AND MATCHING
	QS	5	QUERCUS SHUMARDII / SHUMARDI RED OAK	B & B	4" CAL.	16' - 18' HT.	SINGLE STRAIGHT CENTRAL LEADER, FULL AND MATCHING
	CC	26	CERCIS CANADENSIS 'TEXENSIS' / TEXAS REDBUD	CONT.	2" CAL.	8' - 10' HT.	SINGLE STEM, FULL
<b>SHRUBS</b>							
	LC	51	LOROPETALUM CHINENSIS / LOROPETALUM	5 GAL. MIN.	36" HT.	60" O.C.	FULL AND MATCHING
	LF	49	LEUCOPHYLLUM FRUTESCENS / TEXAS SAGE	5 GAL. MIN.	36" HT.	48" O.C.	FULL AND MATCHING

DATE
REVISIONS
BY

# Kimley»Horn

13455 NOEL RD. TWO GALLERIA OFFICE TOWER  
SUITE 700 DALLAS, TX 75240  
PHONE: 972.770.9300 FAX: 972.239.3820  
WWW.KIMLEY-HORN.COM TX F-928  
© 2024 KIMLEY-HORN AND ASSOCIATES, INC.

TECHNOLOGY PARK  
POND

LANDSCAPE PLAN

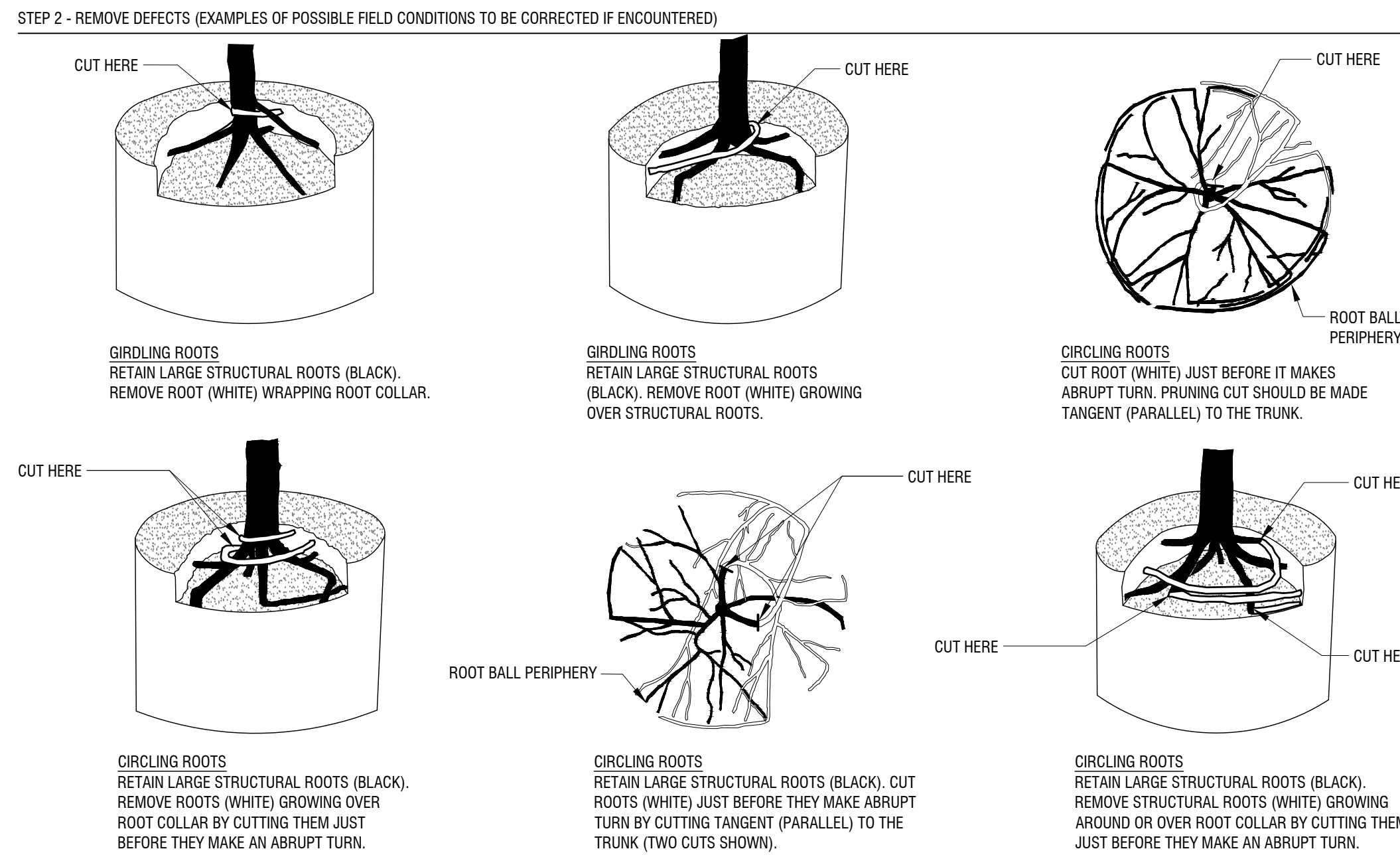
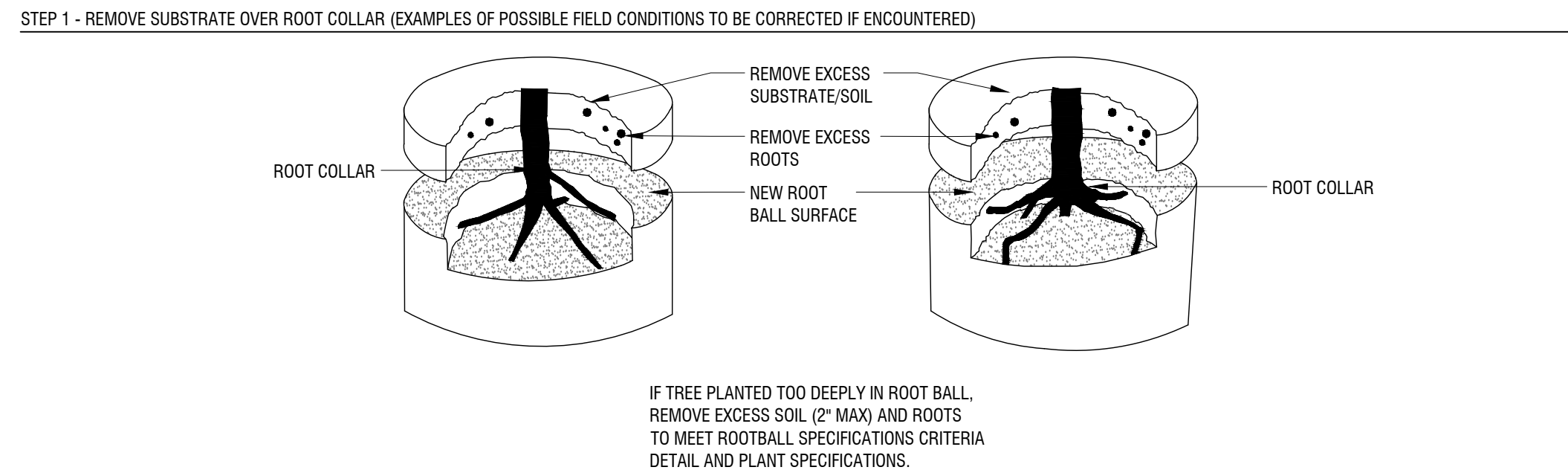
PREPARED FOR  
**ROCKWALL ECONOMIC  
DEVELOPMENT CORPORATION**  
CITY OF ROCKWALL, TX

KHA PROJECT 064584405
DATE 06/18/2025
SCALE AS SHOWN
DESIGNED BY BLR
DRAWN BY MLM
CHECKED BY BLR

SHEET NUMBER
LP 1.00



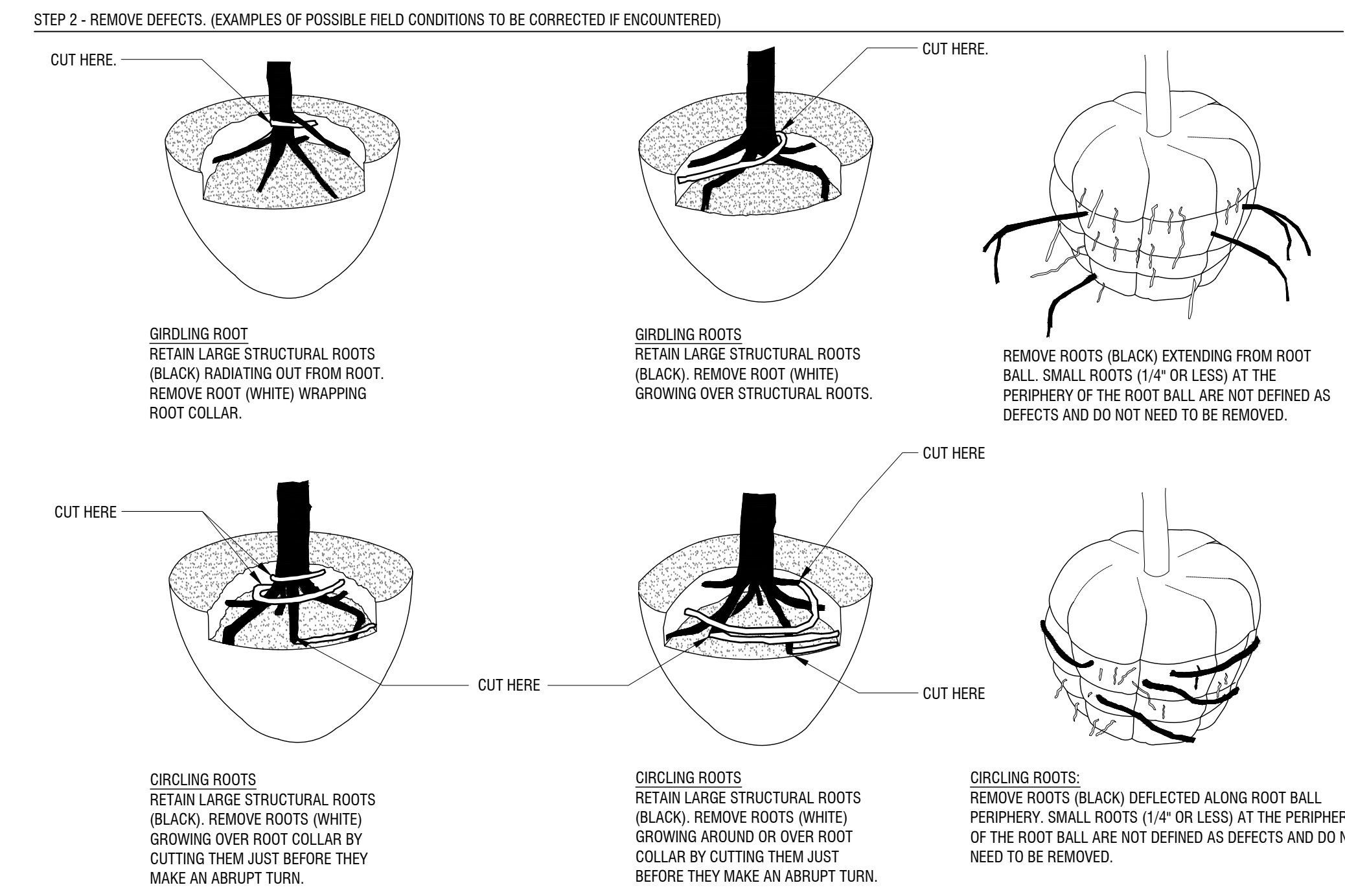
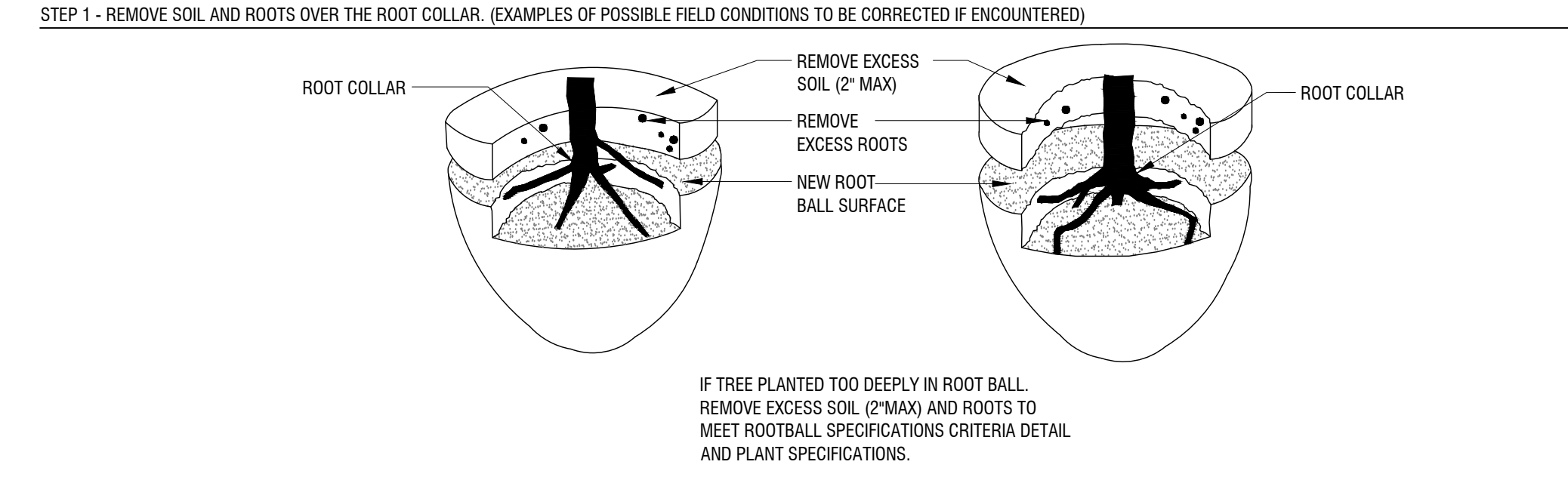
- NOTES:
- IF DEFECTS ARE NOTED DURING SITE OBSERVATIONS AND DEEMED CORRECTABLE BY OWNER'S REPRESENTATIVE (NOT REQUIRING TREE REPLACEMENT), CONTRACTOR MAY USE THESE MINOR ROOT PRUNING PROCEDURES TO CORRECT ROOTBALL DEFECTS. IF DEFECTS REPRESENT A LARGE LOSS OF STRUCTURAL ROOTS, TREE REPLACEMENT WILL BE REQUIRED PER PLANTING SPECIFICATIONS. TREE ROOTBALL CONDITIONS MAY VARY FROM TREE TO TREE.
  - ALL TREES NOTED DURING SITE OBSERVATIONS AS NOT MEETING THE TREE ROOTBALL SPECIFICATIONS CRITERIA AS NOTED IN THESE DETAILS AND IN THE PLANTING SPECIFICATIONS ARE REJECTABLE UNLESS THEY UNDERGO RECOMMENDED CORRECTION.
  - ROOTS AND SOIL MAY BE REMOVED DURING THE CORRECTION PROCESS; SUBSTRATE/SOIL SHALL BE REPLACED AFTER CORRECTION HAS BEEN COMPLETED.
  - TREES SHALL MEET ROOTBALL SPECIFICATIONS CRITERIA DETAIL FOLLOWING CORRECTION.
  - SMALL ROOTS (1/4" OR LESS) ON THE PERIPHERY OF THE ROOT BALL ARE COMMON WITH CONTAINER PLANT PRODUCTION. THESE SMALL ROOTS ARE NOT DEFINED AS "DEFECTS" AND CAN BE ADDRESSED AT THE TIME OF INSTALLATION (SEE ROOT BALL SHAVING CONTAINER DETAIL).
  - REF. PLANTING SPECIFICATIONS FOR ADDITIONAL REQUIREMENTS.



ROOTBALL CORRECTIONS - CONTAINER STOCK

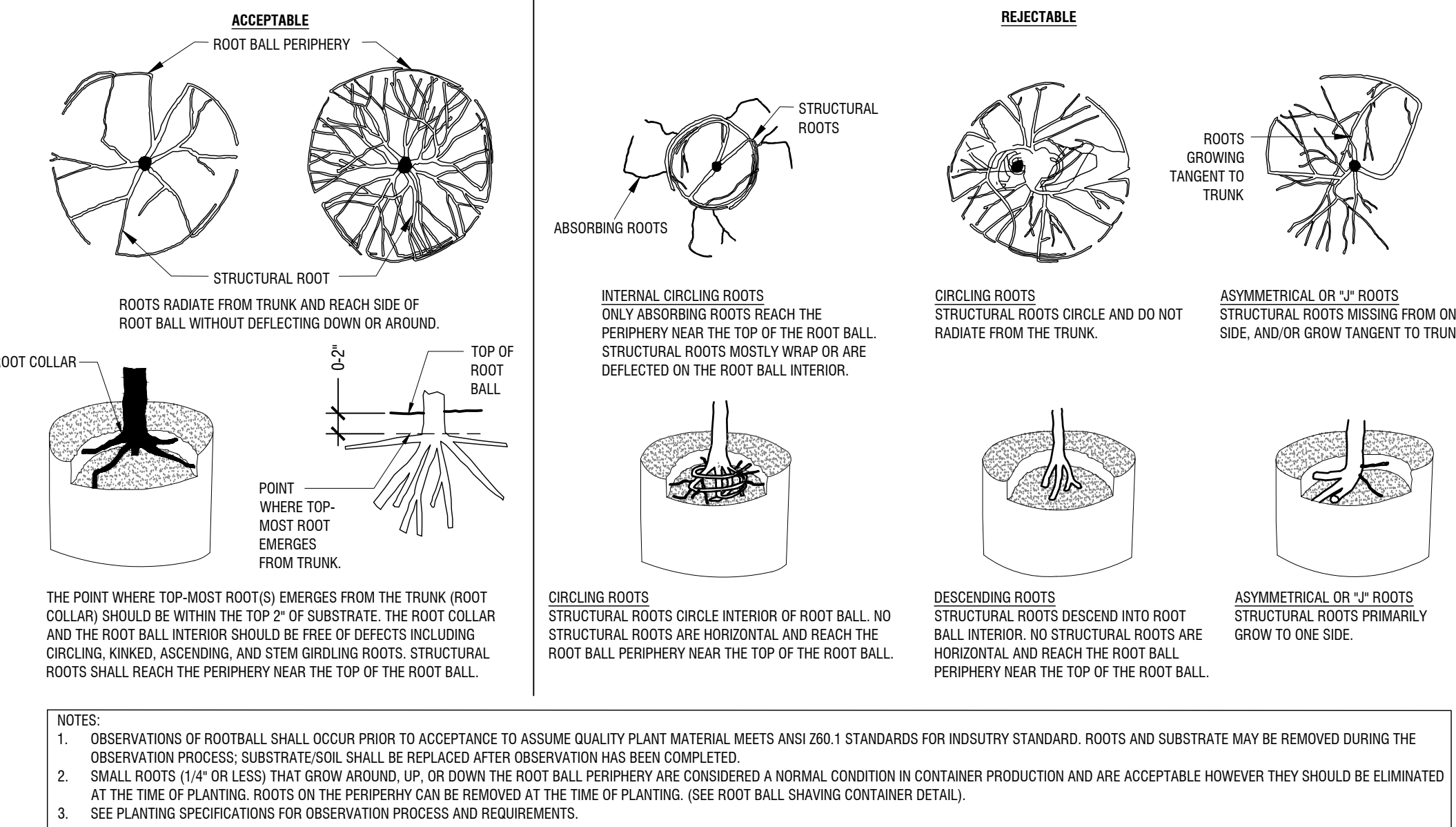
Scale: NTS

- NOTES:
- IF DEFECTS ARE NOTED DURING SITE OBSERVATIONS AND DEEMED CORRECTABLE BY OWNER'S REPRESENTATIVE (NOT REQUIRING TREE REPLACEMENT), CONTRACTOR MAY USE THESE MINOR ROOT PRUNING PROCEDURES TO CORRECT ROOTBALL DEFECTS. IF DEFECTS REPRESENT A LARGE LOSS OF STRUCTURAL ROOTS, TREE REPLACEMENT WILL BE REQUIRED PER PLANTING SPECIFICATIONS. TREE ROOTBALL CONDITIONS MAY VARY FROM TREE TO TREE.
  - ALL TREES NOTED DURING SITE OBSERVATIONS AS NOT MEETING THE ROOTBALL SPECIFICATION CRITERIA AS NOTED IN THESE DETAILS AND IN THE PLANTING SPECIFICATIONS ARE REJECTABLE UNLESS THEY UNDERGO RECOMMENDED CORRECTION.
  - ADJUST HOLE DEPTH TO ALLOW FOR THE REMOVAL OF EXCESS SOIL AND ROOTS OVER THE ROOT COLLAR.
  - ROOTS AND SOIL MAY BE REMOVED DURING THE CORRECTION PROCESS; SUBSTRATE/SOIL SHALL BE REPLACED AFTER THE CORRECTION HAS BEEN COMPLETED.
  - TREES SHALL MEET ROOTBALL SPECIFICATIONS CRITERIA DETAIL FOLLOWING CORRECTION.
  - REF. PLANTING SPECIFICATIONS FOR ADDITIONAL REQUIREMENTS.



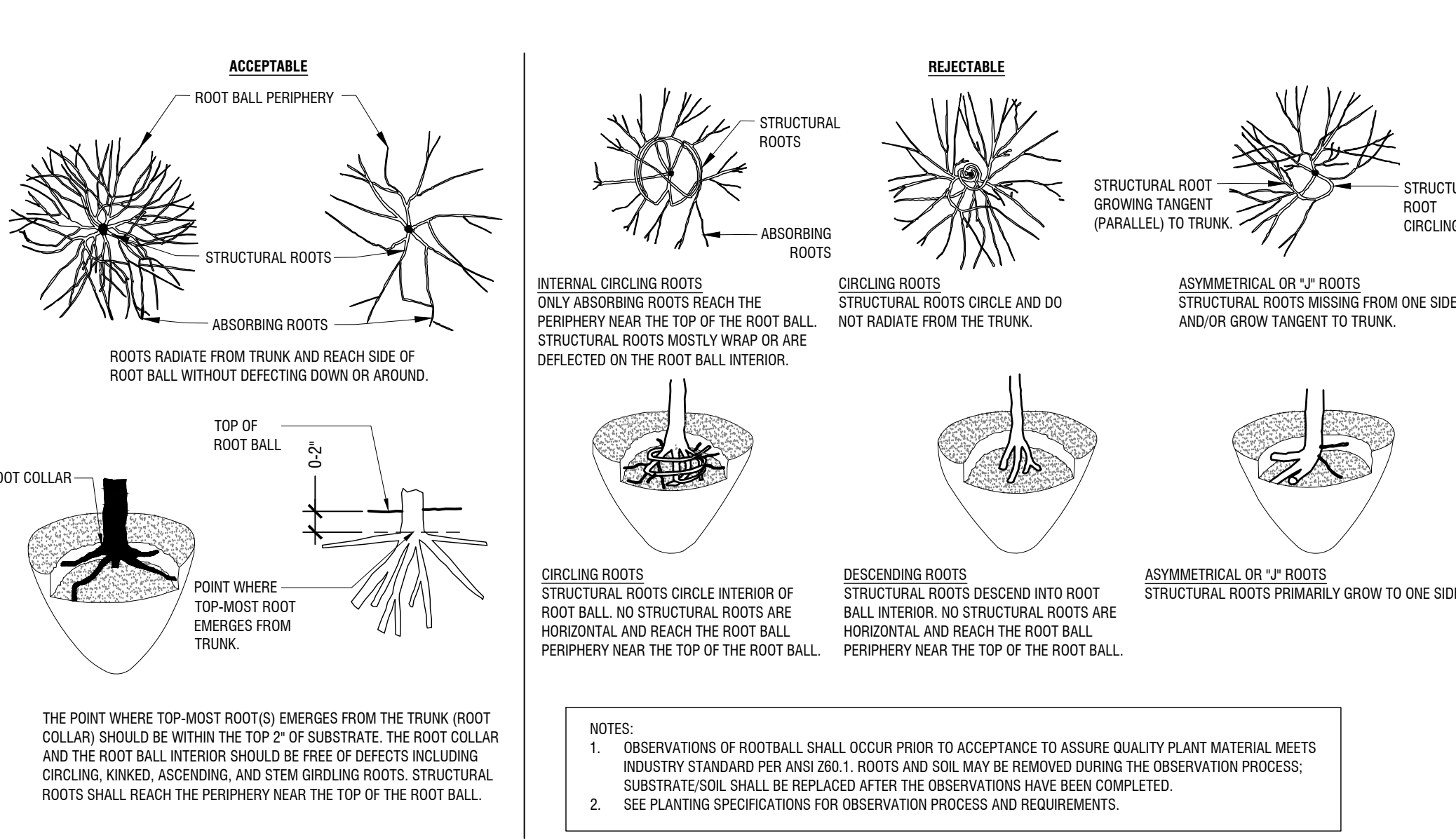
ROOTBALL CORRECTIONS - BALLED AND BURLAPPED STOCK

Scale: NTS



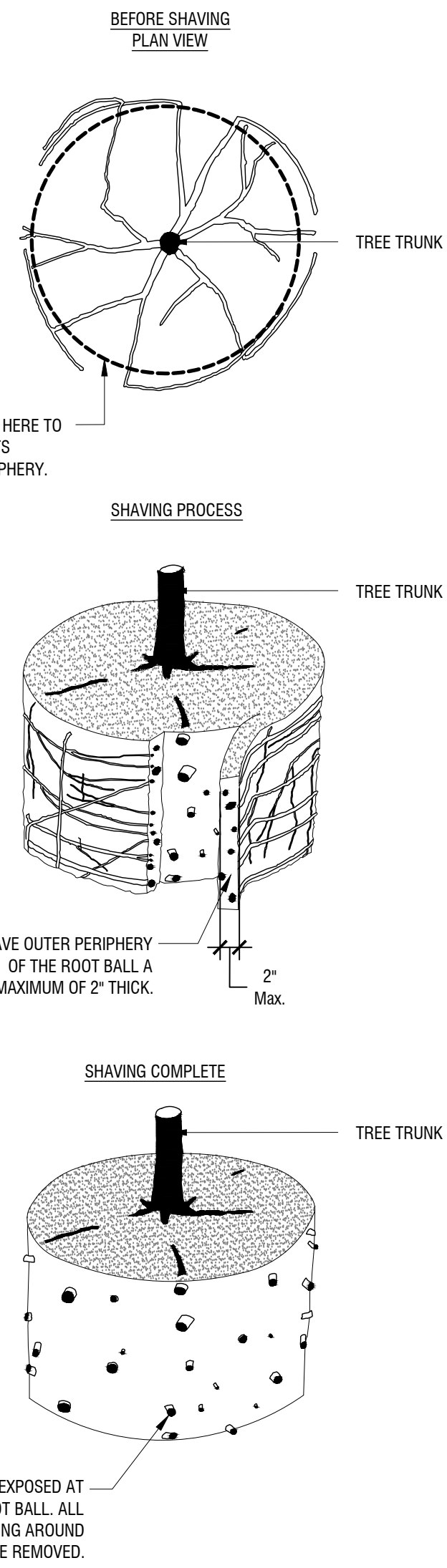
ROOTBALL CRITERIA SPECIFICATIONS (QUALITY REQUIREMENTS) - BALLED AND BURLAPPED STOCK

Scale: NTS



ROOTBALL SPECIFICATIONS CRITERIA (QUALITY REQUIREMENTS) - BALLED AND BURLAPPED STOCK

Scale: NTS



- NOTES:
- ROOTBALL SHAVING TO BE CONDUCTED USING A SHARP BLADE OR HAND SAW ELIMINATING NO MORE THAN NEEDED TO REMOVE ALL ROOTS ON THE PERIPHERY OF ROOT BALL.
  - ROOTBALL SHAVING CAN BE PERFORMED JUST PRIOR TO PLANTING OR AFTER PLACING ROOTBALL INTO PLANTING HOLE.
  - ROOTBALL SHAVING SHOULD ONLY BE DONE IF CIRCLING ROOTS ARE ENCOUNTERED AS SHOWN IN ROOTBALL SPECIFICATIONS CRITERIA DETAIL.

ROOT BALL SHAVING - (CONTAINER STOCK)

Scale: NTS

DRAWN BY: J. L. BAYLOR  
 PLOTTED BY: J. L. BAYLOR  
 DATE: 06/18/2025  
 TIME: 11:07 AM  
 PROJECT: TECHNOLOGY PARK POND  
 SHEET: PLANTING DETAILS  
 DRAWING: PLANTING DETAILS  
 SCALE: AS SHOWN  
 DESIGNED BY: BLR  
 DRAWN BY: MLM  
 CHECKED BY: BLR  
 KHA PROJECT: 064584405  
 DATE: 06/18/2025  
 SCALE: AS SHOWN  
 DESIGNED BY: BLR  
 DRAWN BY: MLM  
 CHECKED BY: BLR

NO.	REVISIONS	DATE	BY

**Kimley»Horn**  
 13455 NOEL RD. TWO GALLERIA OFFICE TOWER  
 SUITE 700 DALLAS, TX 75240  
 PHONE: 972.770.1900 FAX: 972.239.3820  
 WWW.KIMLEY-HORN.COM TX F-928  
 © 2024 KIMLEY-HORN AND ASSOCIATES, INC.

FOR REVIEW ONLY  
 Not for construction or permit purposes.  
**Kimley»Horn**  
 Engineer: BEN SKANIN  
 Date: 06/18/2025

TECHNOLOGY PARK  
 POND  
 PREPARED FOR  
 ROCKWALL ECONOMIC  
 DEVELOPMENT CORPORATION  
 CITY OF ROCKWALL, TX

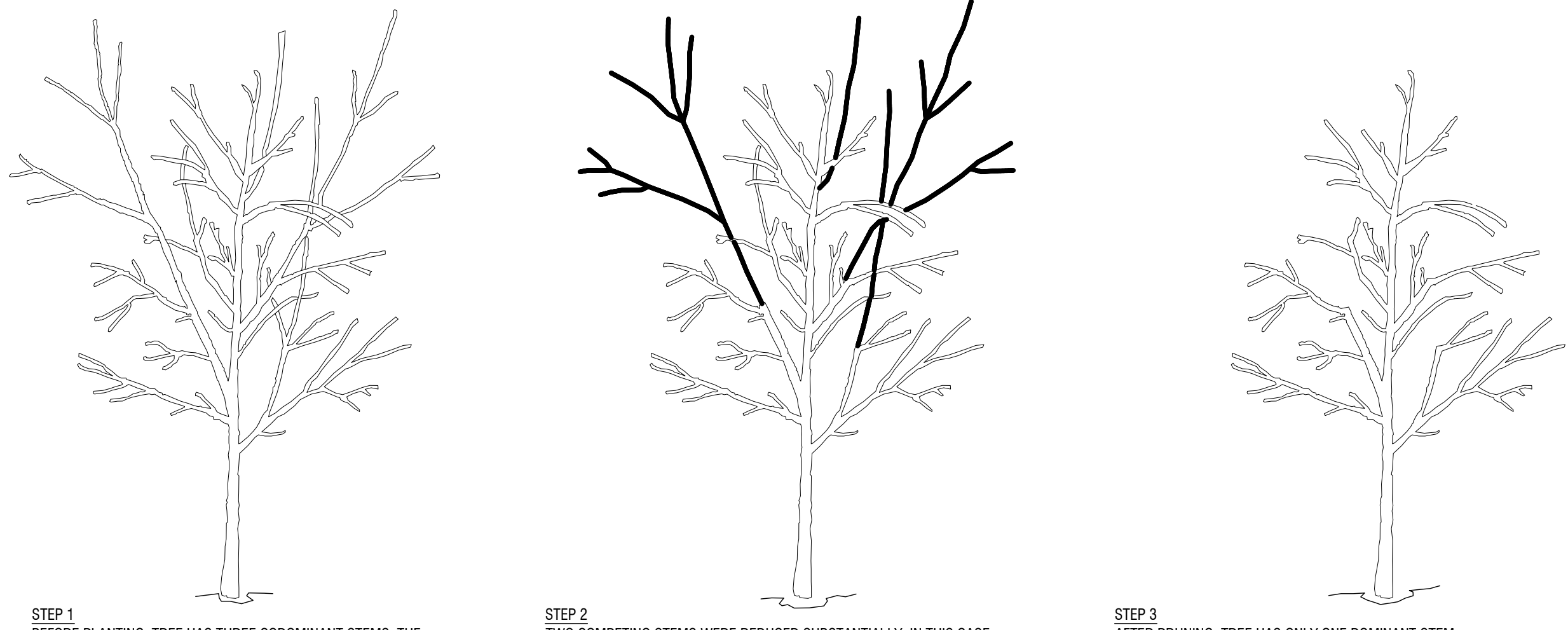
PLANTING DETAILS

IMAGES: © 2018 BY THE AUTHOR. ALL RIGHTS RESERVED. THIS DOCUMENT, TOGETHER WITH THE CONCEPTS AND DESIGN PRESENTED THEREIN, IS AN INSTRUMENT OF SERVICE, AS DEFINED BY TEXAS LAW, AND IS THE PROPERTY OF KIMLEY-HORN AND ASSOCIATES, INC. IT IS TO BE USED ONLY FOR THE SPECIFIC PROJECT AND CLIENT FOR WHICH IT WAS PREPARED. REUSE OF ANY INFORMATION CONTAINED HEREIN WITHOUT THE WRITTEN PERMISSION OF KIMLEY-HORN AND ASSOCIATES, INC. IS STRICTLY PROHIBITED. DATE: 06/18/2025. PROJECT: TECHNOLOGY PARK POND. SHEET: PLANTING DETAILS. SCALE: AS SHOWN. DESIGNED BY: BLR. DRAWN BY: MLM. CHECKED BY: BLR.

DESIGNED BY: BLR  
 PLOTTED BY: JAVIER  
 DATE: 06/18/2025 11:07 AM  
 PROJECT: TECHNOLOGY PARK POND  
 SHEET: PLANTING DETAILS  
 SCALE: AS SHOWN  
 DESIGNED BY: BLR  
 DRAWN BY: MLM  
 CHECKED BY: BLR

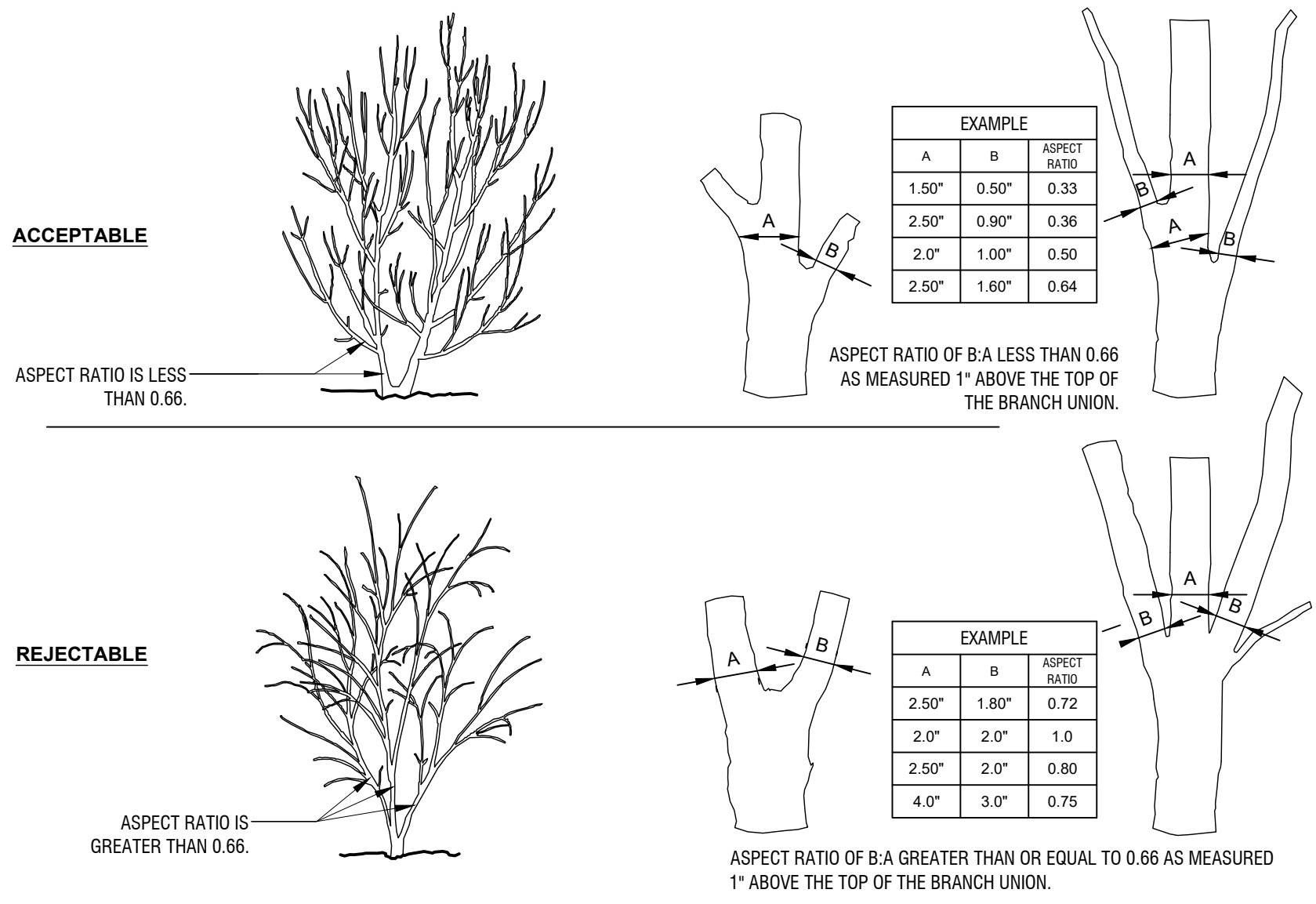
THIS DOCUMENT, TOGETHER WITH THE CONCEPTS AND DESIGN PRESENTED THEREIN, IS AN INSTRUMENT OF SERVICE, AS DEFINED BY TEXAS LAW, AND IS THE PROPERTY OF KIMLEY-HORN AND ASSOCIATES, INC. IT IS TO BE USED ONLY FOR THE SPECIFIC PROJECT AND CLIENT FOR WHICH IT WAS PREPARED. REUSE OF ANY INFORMATION CONTAINED HEREIN WITHOUT THE WRITTEN PERMISSION OF KIMLEY-HORN AND ASSOCIATES, INC. IS STRICTLY PROHIBITED. DATE: 06/18/2025. PROJECT: TECHNOLOGY PARK POND. SHEET: PLANTING DETAILS. SCALE: AS SHOWN. DESIGNED BY: BLR. DRAWN BY: MLM. CHECKED BY: BLR.

- NOTES:**
- IF DEFECTS ARE NOTED DURING SITE OBSERVATIONS AND DEEMED CORRECTABLE BY OWNER'S REPRESENTATIVE, (NOT REQUIRING TREE REPLACEMENT), CONTRACTOR TO FOLLOW ANSI 300, PART 1 (PRUNING), AND I.S.A. BEST MANAGEMENT PRACTICES - TREE PRUNING (MOST CURRENT EDITION) AS SHOWN IN THIS EXAMPLE OF CORRECTIVE PRUNING TO CORRECT TREE CROWN DEFECTS. CANOPY CONDITIONS WILL VARY FROM TREE TO TREE.
  - ALL TREES NOTED DURING SITE OBSERVATIONS AS NOT MEETING THE TREE CROWN SPECIFICATION CRITERIA AS NOTED IN THESE DETAILS AND IN THE PLANTING SPECIFICATIONS ARE REJECTABLE UNLESS THEY UNDERGO RECOMMENDED TREATMENT.
  - TREE SHALL MEET TREE CROWN SPECIFICATIONS CRITERIA DETAILED FOLLOWING CORRECTION.
  - REF. PLANTING SPECIFICATIONS FOR ADDITIONAL REQUIREMENTS.



**TREE CROWN CORRECTION (EXAMPLE)**

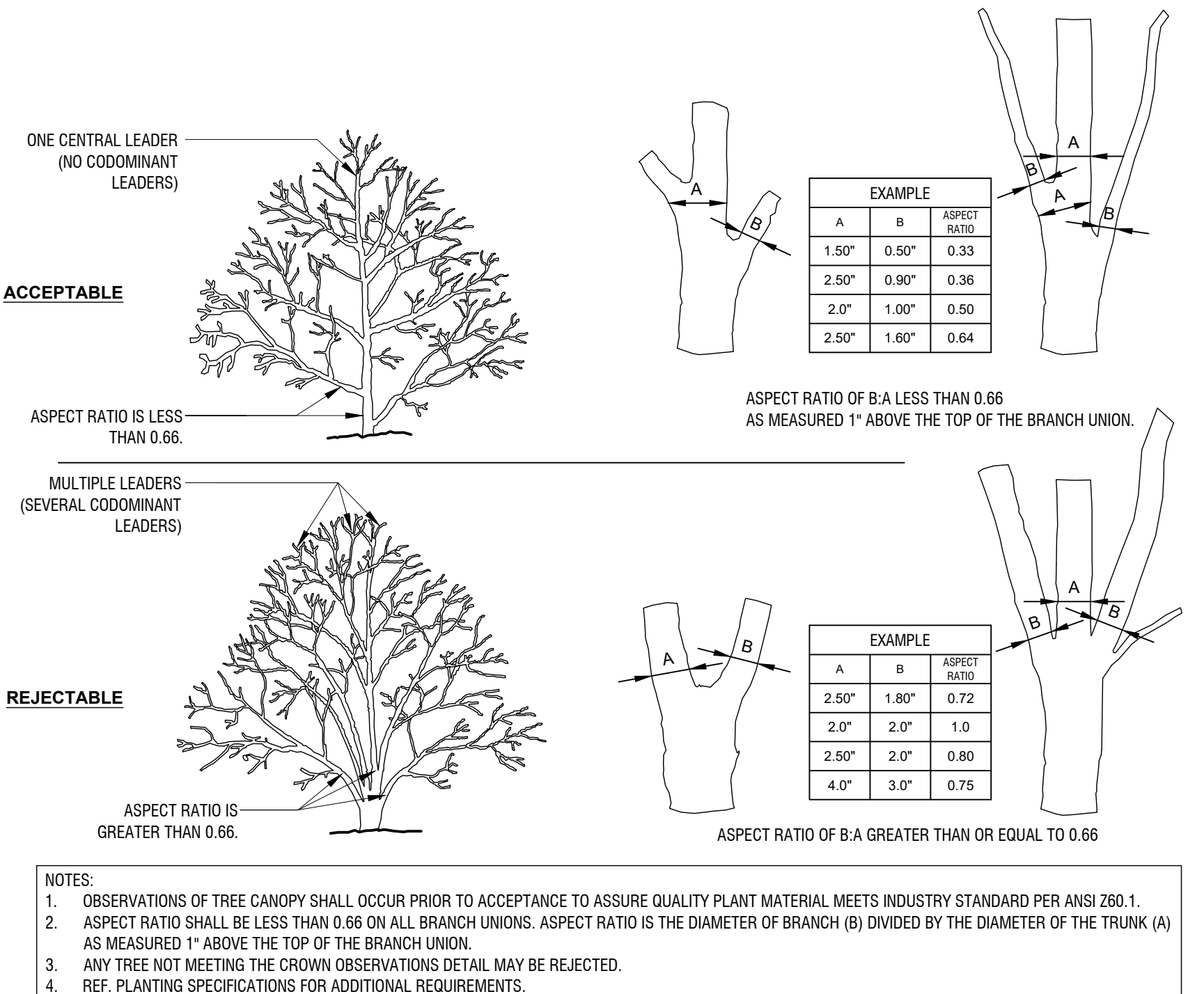
Scale: NTS



- NOTES:**
- OBSERVATIONS OF TREE CANOPY SHALL OCCUR PRIOR TO ACCEPTANCE TO ASSURE QUALITY PLANT MATERIAL MEETS INDUSTRY STANDARD PER ANSI Z60.1.
  - ASPECT RATIO SHALL BE LESS THAN 0.66 ON ALL BRANCH UNIONS. ASPECT RATIO IS THE DIAMETER OF BRANCH (B) DIVIDED BY THE DIAMETER OF THE TRUNK (A) AS MEASURED 1" ABOVE THE TOP OF THE BRANCH UNION.
  - ANY TREE NOT MEETING THE CROWN OBSERVATIONS DETAIL MAY BE REJECTED.
  - REF. PLANTING SPECIFICATIONS FOR ADDITIONAL REQUIREMENTS.

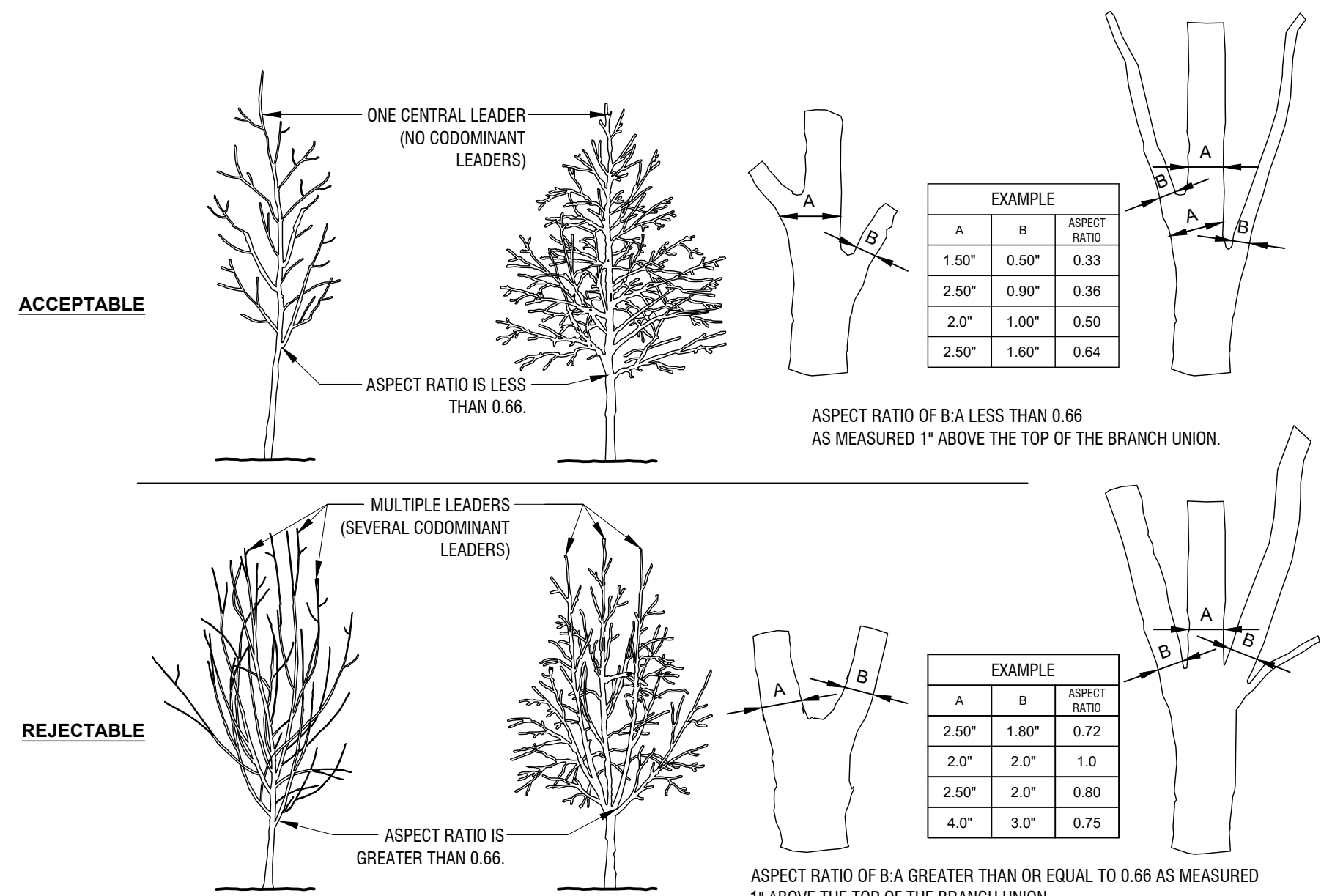
**CROWN OBSERVATIONS (MULTI-STEM TREE)**

Scale: NTS



**TREE CROWN SPECIFICATIONS CRITERIA (LOW BRANCHED - CENTRAL LEADER TREE)**

Scale: NTS



- NOTES:**
- OBSERVATIONS OF TREE CANOPY SHALL OCCUR PRIOR TO ACCEPTANCE TO ASSURE QUALITY PLANT MATERIAL MEETS INDUSTRY STANDARD PER ANSI Z60.1.
  - ASPECT RATIO SHALL BE LESS THAN 0.66 ON ALL BRANCH UNIONS. ASPECT RATIO IS THE DIAMETER OF BRANCH (B) DIVIDED BY THE DIAMETER OF THE TRUNK (A) AS MEASURED 1" ABOVE THE TOP OF THE BRANCH UNION.
  - ANY TREE NOT MEETING THE CROWN OBSERVATIONS DETAIL MAY BE REJECTED.
  - REF. PLANTING SPECIFICATIONS FOR ADDITIONAL REQUIREMENTS.

**TREE CROWN SPECIFICATIONS CRITERIA (QUALITY REQUIREMENTS) FOR HIGH BRANCHED - CENTRAL LEADER TREE**

Scale: NTS

**Kimley»Horn**  
 13455 NOEL RD. TWO GALLERIA OFFICE TOWER  
 SUITE 700 DALLAS, TX 75240  
 PHONE: 972-770-1500 FAX: 972-239-3820  
 WWW.KIMLEY-HORN.COM TX F-928  
 © 2024 KIMLEY-HORN AND ASSOCIATES, INC.

FOR REVIEW ONLY  
 Not for construction or permit purposes.  
**Kimley»Horn**  
 Project: BEN BRANNON  
 Date: 06/18/2025

KHA PROJECT	064584405	DATE	06/18/2025	SCALE	AS SHOWN	BLR	MLM	BLR
DESIGNED BY	BLR	DRAWN BY	MLM	CHECKED BY	BLR			

TECHNOLOGY PARK  
 POND  
 PREPARED FOR  
 ROCKWALL ECONOMIC  
 DEVELOPMENT CORPORATION  
 CITY OF ROCKWALL, TX

PLANTING DETAILS

NO.	REVISIONS	DATE	BY