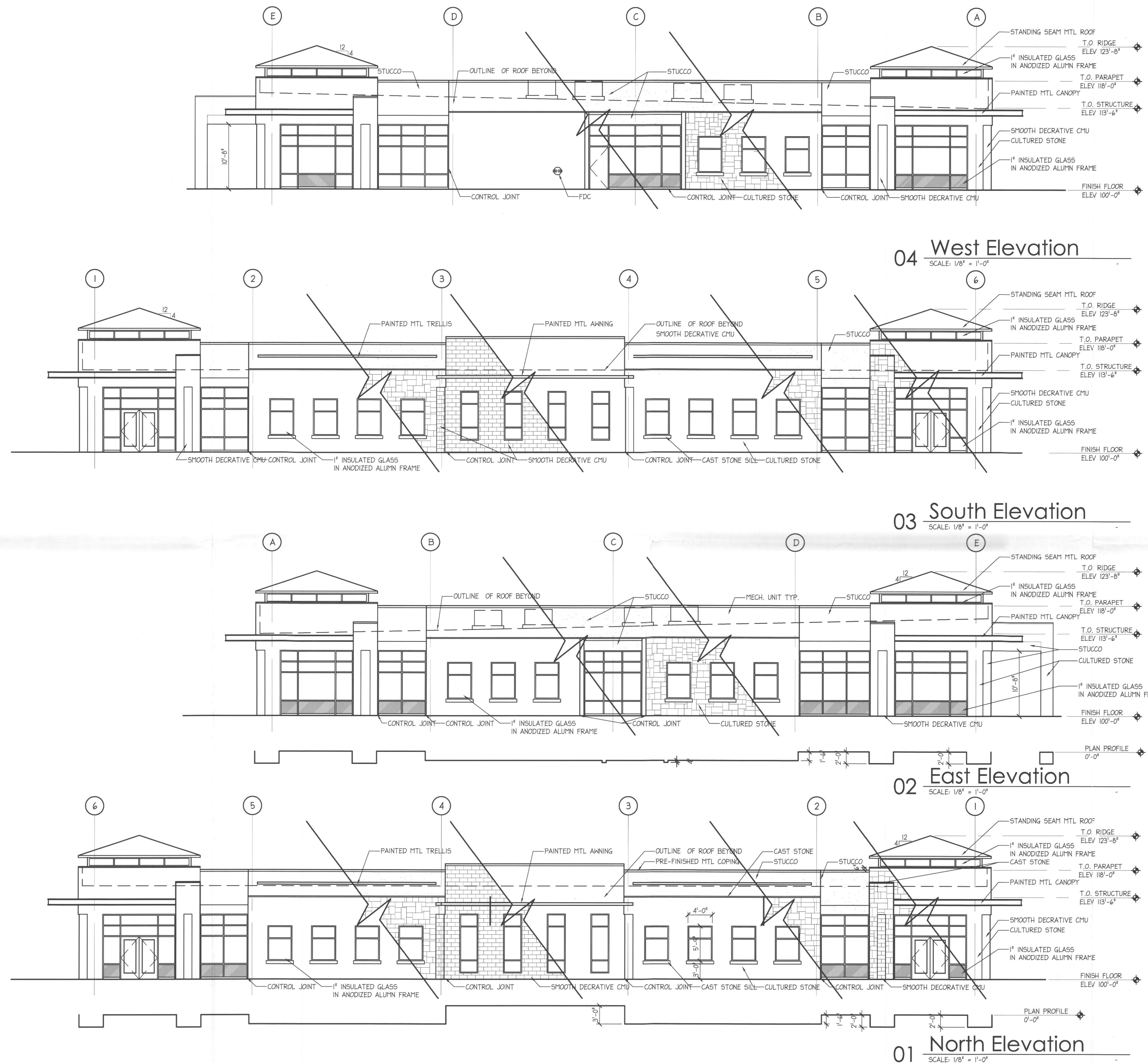


STANDING SEAM METAL ROOF (MR-1)
TYPE: BERRIDGE PREWEATHERED GALVOLUME:

$$(5,398 / 7,114) \times 100 = \underline{76\% \text{ MASONRY}}$$

A5.00



**LAKE POINTE ORTHOPAEDICS & SPORTS
MEDICINE MEDICAL OFFICE BUILDING**

HORIZON RD
ROCKWALL, TEXAS

HORIZON RD
ROCKWALL, TEXAS

DESIGN/BUILDER
CENTERPOINT BUILDERS, LTD
5339 ALPHA ROAD
SUITE 250
DALLAS, TX 75240
(972) 220-0500

ARCHITECT :
McCALLARIOS ARCHITECTURE
2591 DALLAS PARKWAY
SUITE 300
FRISCO, TX 75034
(972) 377-0072
(972) 421-1827 (fax)

CIVIL CONSULTANT:
O'DONALD ENGINEERING, PLLC
1601 EAST LAMAR BOULEVARD
SUITE 116
ARLINGTON, TX 76011
(817) 794-0202
(817) 548-8430 (fax)

STRUCTURAL CONSULTANT:
ZINSER/GROSSMAN
400 SOUTH AKARD ST
DALLAS, TX 75202
(469) 227-3980
(469) 227-3981 (fax)

SITE PLAN APPLICATION NOT FOR CONSTRUCTION

GARY D McCALLA
TEXAS ARCHITECT
LICENSE NO. 12519

DATE: 6 FEBRUARY 2008

REVISIONS

FILE COPY

PROJ. NO: 7044A

SHEET TITLE:
**LANDSCAPE
PLAN**

SHEET NO.:
L1.1

CITY OF ROCKWALL LANDSCAPE REQUIREMENTS

LANDSCAPE BUFFER STRIP

HORIZON ROAD w/ RESIDENTIAL ACROSS PUBLIC STREET

REQUIRED	PROVIDED
10' buffer where residential adjacency exists = 14 Shade Trees (3" caliper) or 14 Ornamental Trees	10' landscape buffer
10' buffer w/ 1 Large Tree per 50 i.f. where frontage abuts Arterial or Collector Street. 250' 50= 5 large trees	5 large trees in 10'

PROVIDED
10' landscape buffer

10' buffer w/ 1 Large Tree per 50 l.f.
where frontage abuts Arterial or Collector Street.
250 / 50 = 5 large trees

5 large trees in 10' buffer

5 large trees in 10' buffer

PARKING LOT INTERIOR

TOTAL SPACES= 82
TOTAL SQUARE FEET = 36,64

REQUIRED
5% (Min. 200 s.f.) of parking lot to be landscaped
 $36.641 \text{ s.f.} \times 5\% = 1.832 \text{ s.f.}$

PROVIDED
2,923 s.f. (8%)

1 Large Canopy Tree per 10 space
 $82/10 = 9$ trees

11 Large Canopy Trees

No space more than 80 feet from a tree

No space more than 80 feet from a tree.

LOT LANDSCAPING

TOTAL LOT = 63,867 s.f.

REQUIRED
15% of lot to be landscape area. 50% of
required landscape to be in front and side yards.
 $63,867 \times 15\% = 9,580 \text{ S.F.}$

PROVIDED

NOTE: THIS DETAIL APPLIES TO
ALL TREES 3" CALIPER AND GREATER.

"ARBORTIE" STRAPPING
(3 PER TREE)

3" SAUCER
AROUND TREE

METAL GROUND STAKE—

MULCH TOPDRESSING—
PULL MULCH BACK 2" F

(B) TREE GUYING DETAIL
SCALE: N.T.S.

2008 00

RECEIVED
FEB 06 2008
By _____

NOTE: ALL PLANT MATERIAL TO BE WATERED BY AN AUTOMATIC, UNDERGROUND IRRIGATION SYSTEM

PLANT LIST

KEY	QTY.	COMMON NAME	BOTANICAL NAME	SIZE	REMARKS
BC	11	BALD CYPRESS	<i>Taxodium distichum</i>	Minimum 3" caliper; minimum 12' ht. and 5' spread.	Nursery-grown B&B, containerized, or container-grown; full head; MATCHED
RO	3	SHUMARD RED OAK	<i>Quercus shumardii</i>	Minimum 3" caliper; minimum 12' ht. and 5' spread.	Nursery-grown B&B, containerized, or container-grown; full head; MATCHED
LO	2	LIVE OAK	<i>Quercus virginiana</i>	Minimum 3" caliper; minimum 12' ht. and 5' spread.	Nursery-grown B&B, containerized, or container-grown; full head; MATCHED
DBH	113	DWARF BURFORD HOLLY	<i>Ilex cornuta</i> <i>'Burfordii'</i> nana	5 gal. min. 18" ht. and 12" spread	Full-to-ground; plant 24" o.c.

GENERAL NOTE

- [illegible]

Notes:

Job:
Type:

AVALUME

GENERAL DESCRIPTION: The EMCO Avalume is a rectangular area luminaire defined by its sleek rounded profile and rugged construction. The housing is one-piece, diecast aluminum and mounts directly to a pole or wall without the need of a separate support arm. The multi-coated arc-image duplicating optical systems provide IES Types III and IV distributions. The door frame is single-piece diecast aluminum and retains an optically clear tempered flat glass lens. The luminaire is completely sealed and gasketed preventing intrusion from moisture, dust and insects. The Avalume luminaires are finished with a fade and abrasion resistant TGIC powdercoat.

CUTOFF PERFORMANCE: Flat glass lens luminaires provide full cutoff performance.

ORDERING

PREFIX	CONFIGURATION	DISTRIBUTION	WATTAGE	VOLTAGE	FINISH	OPTIONS
AVA	1	F	250MH			HS

Enter the order code into the appropriate box above. Note: Gaisdo reserves the right to refuse a configuration. Not all combinations and configurations are valid. Refer to notes below for exclusions and limitations. For questions or concerns, please consult the factory.

CONFIGURATION

1	Single Pole Mount
2	Twin Pole Mount at 180°
2@90	Twin Pole Mount at 90°
3	3-way Pole Mount at 90°
3@120	3-way Pole Mount at 120°
4	4-way Pole Mount
W	Wall Mount
WS	Wall Mount with Surface Conduit

DISTRIBUTION

3	IES Type III
F	IES Type IV Forward Throw

NOTE: Type III reflectors ship as Type F. Removal of an insert converts the reflector to Type 3.

IES Type V

MTS Medium Throw with Solite™ Lens. Fluorescent only.

WATTAGE

150HPS	100MH	250PSMH	MTS, Octal only
250HPS	150MH	320PSMH	(2)60CF ¹
400HPS	175MH	350PSMH	(3)42TRF ²
	250MH	400PSMH	
	400MH		

VOLTAGE

120
208
240
277
347
480
UNIV

1. Requires BT28 / E28 mogul base lamp.
2. Fluorescent luminaires feature electronic ballasts that accept 120V through 277V, 50Hz to 60Hz. Input. Specify "UNIV" voltage for 120V through 277V.

FINISH

BRP	Bronze Paint
BLP	Black Paint
WP	White Paint
NP	Natural Aluminum Paint
BGP	Beige Paint
OC	Optional Color Paint Specify RAL designation ex: CO-RAL7034
SC	Special Color Paint Specify. Must supply color chip.

OPTIONS

HS	External House Side Shield
LF	In-Pole/In-Line Fusing. Kit includes In-Line Fuses.
PC	Locking Type Photocontrol Receptacle w/Photocontrol. Not available with 480V/PCR.
MF	Mast Arm Filter. Requires 2.38" O.D. Mast Arm.
PTF2	Pole Top Filter 2.375" X 4"
PTF3	Pole Top Filter 3" - 3.5" X 6"
PTF4	Pole Top Filter 3.5" - 4" X 6"
QS	Quartz Standby 150w quartz maximum. Not available with 480V.
QST	Quartz Standby - Timed Delay 150w quartz maximum. Not available with 480V.
WG	Wire Guard
POLY	External Polycarbonate Shield 250w maximum.

© Copyright EMCO Lighting 2004-2007. All Rights Reserved. International Copyright Secured. EMCO Lighting reserves the right to change materials or modify the design of its product without notification as part of the company's continuing product improvement program.

EMCO Lighting
1611 Clovis Barker Road
San Marcos, TX 78666
(512) 753-1000
FAX: (512) 753-7855
www.alelighting.com



75215-55/0607

Notes:

Job:
Type:

AVALUME

GENERAL DESCRIPTION: The EMCO Avalume is a rectangular area luminaire defined by its sleek rounded profile and rugged construction. The housing is one-piece, diecast aluminum and mounts directly to a pole or wall without the need of a separate support arm. The multi-coated arc-image duplicating optical systems provide IES Types III and IV distributions. The door frame is single-piece diecast aluminum and retains an optically clear tempered flat glass lens. The luminaire is completely sealed and gasketed preventing intrusion from moisture, dust and insects. The Avalume luminaires are finished with a fade and abrasion resistant TGIC powdercoat.

CUTOFF PERFORMANCE: Flat glass lens luminaires provide full cutoff performance.

ORDERING

PREFIX	CONFIGURATION	DISTRIBUTION	WATTAGE	VOLTAGE	FINISH	OPTIONS
AVA	W	3	250MH			

Enter the order code into the appropriate box above. Note: Gaisdo reserves the right to refuse a configuration. Not all combinations and configurations are valid. Refer to notes below for exclusions and limitations. For questions or concerns, please consult the factory.

CONFIGURATION

1	Single Pole Mount
2	Twin Pole Mount at 180°
2@90	Twin Pole Mount at 90°
3	3-way Pole Mount at 90°
3@120	3-way Pole Mount at 120°
4	4-way Pole Mount
W	Wall Mount
WS	Wall Mount with Surface Conduit

DISTRIBUTION

3	IES Type III
F	IES Type IV Forward Throw

NOTE: Type III reflectors ship as Type F. Removal of an insert converts the reflector to Type 3.

IES Type V

MTS Medium Throw with Solite™ Lens. Fluorescent only.

WATTAGE

150HPS	100MH	250PSMH	MTS, Octal only
250HPS	150MH	320PSMH	(2)60CF ¹
400HPS	175MH	350PSMH	(3)42TRF ²
	250MH	400PSMH	
	400MH		

VOLTAGE

120
208
240
277
347
480
UNIV

1. Requires BT28 / E28 mogul base lamp.
2. Fluorescent luminaires feature electronic ballasts that accept 120V through 277V, 50Hz to 60Hz. Input. Specify "UNIV" voltage for 120V through 277V.

FINISH

BRP	Bronze Paint
BLP	Black Paint
WP	White Paint
NP	Natural Aluminum Paint
BGP	Beige Paint
OC	Optional Color Paint Specify RAL designation ex: CO-RAL7034
SC	Special Color Paint Specify. Must supply color chip.

OPTIONS

HS	External House Side Shield
LF	In-Pole/In-Line Fusing. Kit includes In-Line Fuses.
PC	Locking Type Photocontrol Receptacle w/Photocontrol. Not available with 480V/PCR.
MF	Mast Arm Filter. Requires 2.38" O.D. Mast Arm.
PTF2	Pole Top Filter 2.375" X 4"
PTF3	Pole Top Filter 3" - 3.5" X 6"
PTF4	Pole Top Filter 3.5" - 4" X 6"
QS	Quartz Standby 150w quartz maximum. Not available with 480V.
QST	Quartz Standby - Timed Delay 150w quartz maximum. Not available with 480V.
WG	Wire Guard
POLY	External Polycarbonate Shield 250w maximum.

© Copyright EMCO Lighting 2004-2007. All Rights Reserved. International Copyright Secured. EMCO Lighting reserves the right to change materials or modify the design of its product without notification as part of the company's continuing product improvement program.

EMCO Lighting
1611 Clovis Barker Road
San Marcos, TX 78666
(512) 753-1000
FAX: (512) 753-7855
www.alelighting.com



75215-55/0607

Luminaire Schedule

Symbol	Qty	Label	Arrangement	Lumens	LLF	Description
	14	SW	SINGLE	20000	0.720	EMCO AVA-3-250MH-WALL MOUNTED
	6	S1	SINGLE	20000	0.720	EMCO AVA-F-250MH-HS

Numeric Summary						
Label	CalcType	Units	Avg	Max	Min	Avg/Min
Site Planar	Illuminance	Fc	1.00	6.5	0.0	N/A
Site Planar	Illuminance	Fc	1.22	6.5	0.0	N/A

LAKE POINTE ORTHOPAEDICS & SPORTS MEDICINE MEDICAL OFFICE BUILDING

HORIZON RD
ROCKWALL, TEXAS

DESIGN/BUILDER

CENTERPOINT BUILDERS, LTD
5339 ALPHA ROAD
SUITE 250
DALLAS, TX 75240
(972) 220-0500

ARCHITECT:

MCALLARIOS ARCHITECTURE
2591 DALLAS PARKWAY
SUITE 300
FRISCO, TX 75034
(972) 377-0072
(972) 421-1827 (fax)

CIVIL CONSULTANT:

ODONALD ENGINEERING, PLLC
1601 EAST LAMAR BOULEVARD
SUITE 116
ARLINGTON, TX 76011
(817) 794-0202
(817) 548-8430 (fax)

STRUCTURAL CONSULTANT:

ZINSER/GROSSMAN
400 SOUTH AKARD ST
DALLAS, TX 75202
(469) 227-3980
(469) 227-3981 (fax)

SITE PLAN APPLICATION NOT FOR CONSTRUCTION

GARY D McALLA
TEXAS ARCHITECT
LICENSE NO. 12519

DATE: 6 FEBRUARY 2008

REVISIONS

FILE COPY

PROJ. NO: 7044A

SHEET TITLE:
PHOTOMETRIC
STUDY

SHEET NO.:

ES1.1