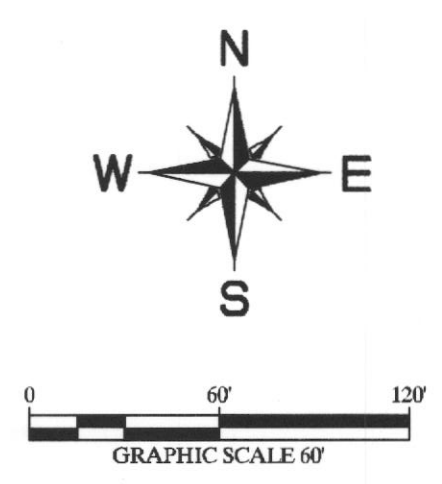
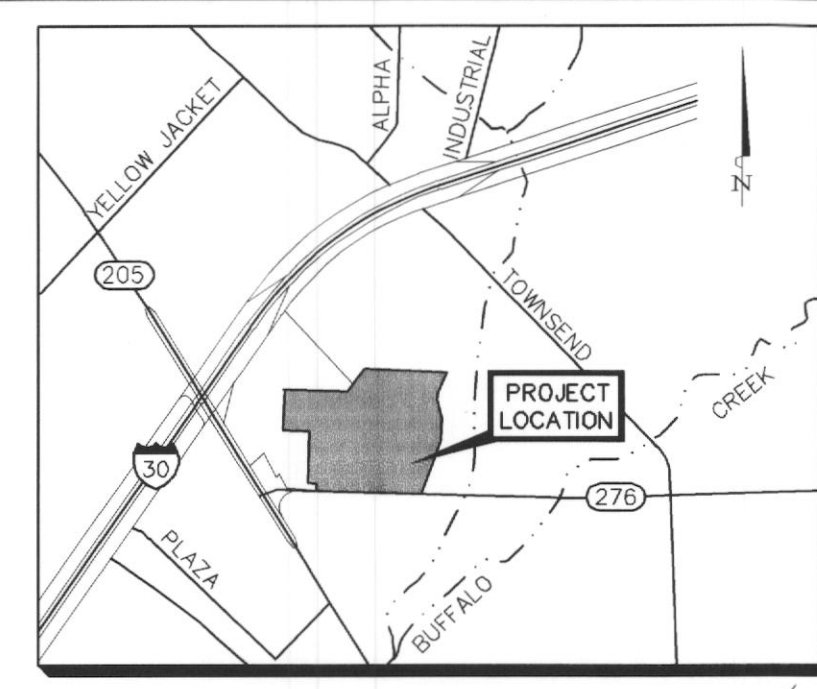


SITE DATA SUMMARY TABLE	
ZONING	COMMERCIAL DISTRICT
PROPOSED USE	RETAIL - GENERAL
TOTAL LOT AREA	883,850 SF / 20.290 AC
TOTAL BUILDING AREA	147,322 SF / 3.382 AC
BUILDING HEIGHT	40 FT
TOTAL IMPERVIOUS AREA	605,229 SF
TOTAL LANDSCAPE AREA REQUIRED (15%)	132,578 SF
TOTAL LANDSCAPE AREA PROVIDED (20.2%)	178,192 SF
TOTAL OFF-STREET PARKING REQUIRED (4/1,000 SF)	590
TOTAL OFF-STREET PARKING PROVIDED (130/250 SF = 519/1000 SF)	756
TOTAL HANDICAP PARKING REQUIRED (2% OF TOTAL)	16
TOTAL HANDICAP PARKING PROVIDED	16



No.	Date	Revisions	App.

**Kimley-Horn  
and Associates, Inc.**

Tel. No. (972) 335-3580  
Fax No. (972) 335-3779  
5750 Gensert Court, Suite 200  
Frisco, Texas 75034

**PRELIMINARY**  
FOR REVIEW ONLY  
Not for construction, bidding,  
or permit purposes.  
  
ENGINEERING PLANNING AND  
ENVIRONMENTAL CONSULTANTS  
Engineer: DAVID M. KOCHALKO  
P.E. No. 87781, Date: 05/13/08

**COSTCO**  
WHOLESALE  
ROCKWALL, TEXAS

**FILE COPY**  
  
2008 008

**LEGEND**

	PARKING COUNT
	EX. WATER
	EX. FIRE ASSEMBLY
	PROP. WATER
	PROP. FIRE ASSEMBLY
	EX. SANITARY SEWER
	PROP. SANITARY SEWER
	EX. STORM SEWER
	PROP. STORM SEWER
	EX. OVERHEAD POWER
	WATER METER
	FIRE HYDRANT
	GREASE TRAP
	CURB INLET
	DROP INLET
	PROP. HEAVY DUTY PAVEMENT 6"-3,600 PSI (MIN.) REINFORCED CONCRETE PAVEMENT W/ NO. 3 BARS, 24" O.C.E.W., ON 6" LIME TREATED SUBGRADE PER GEOTECH RECOMMENDATIONS
	PROP. LIGHT DUTY PAVEMENT 5"-3,600 PSI (MIN.) REINFORCED CONCRETE PAVEMENT WITH NO. 3 BARS, 24" O.C.E.W., ON 6" LIME TREATED SUBGRADE PER GEOTECH RECOMMENDATIONS
	TXDOT R.O.W. PAVEMENT 8"-3,600 PSI (MIN.) REINFORCED CONCRETE PAVEMENT WITH NO. 3 BARS, 24" O.C.E.W., ON 6" LIME TREATED SUBGRADE

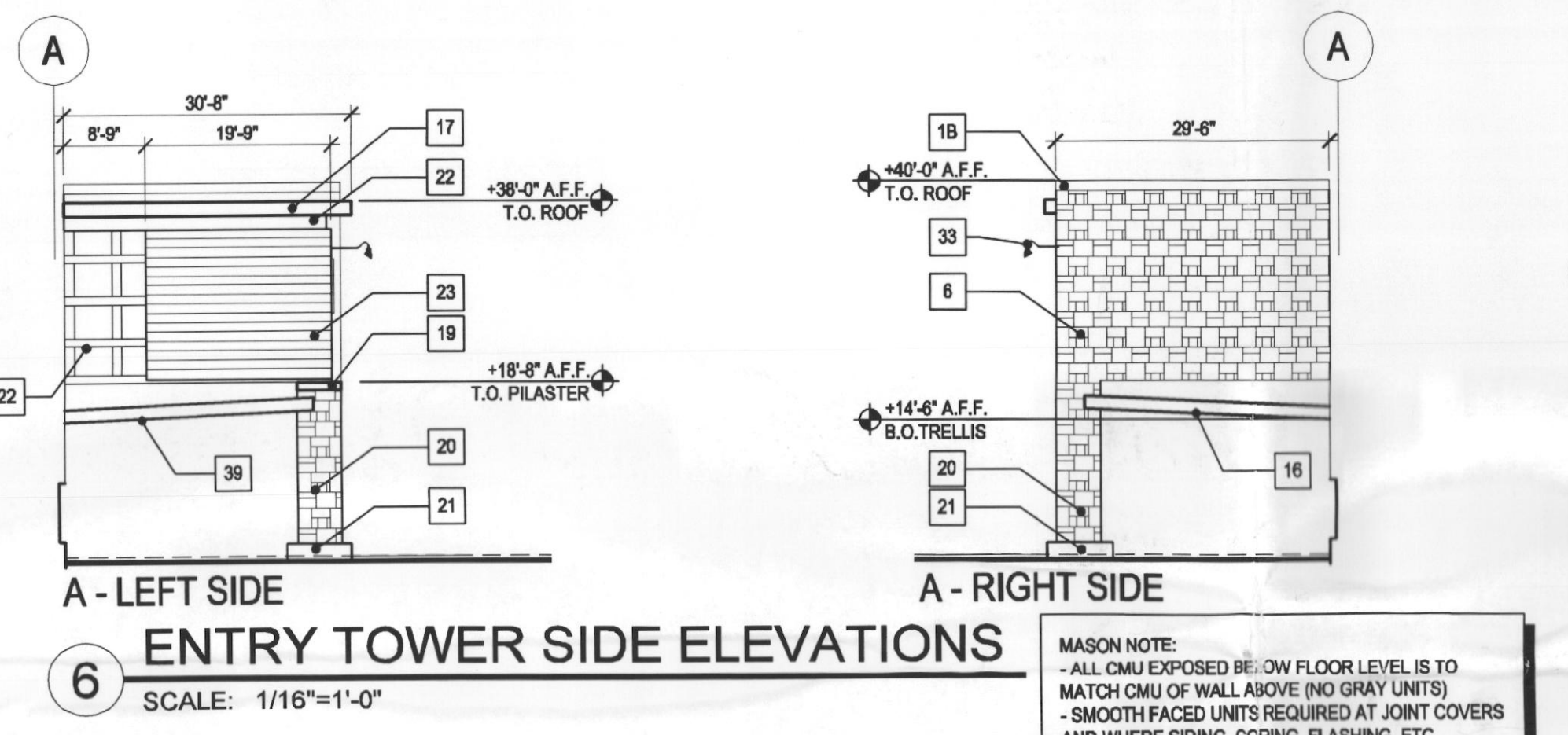
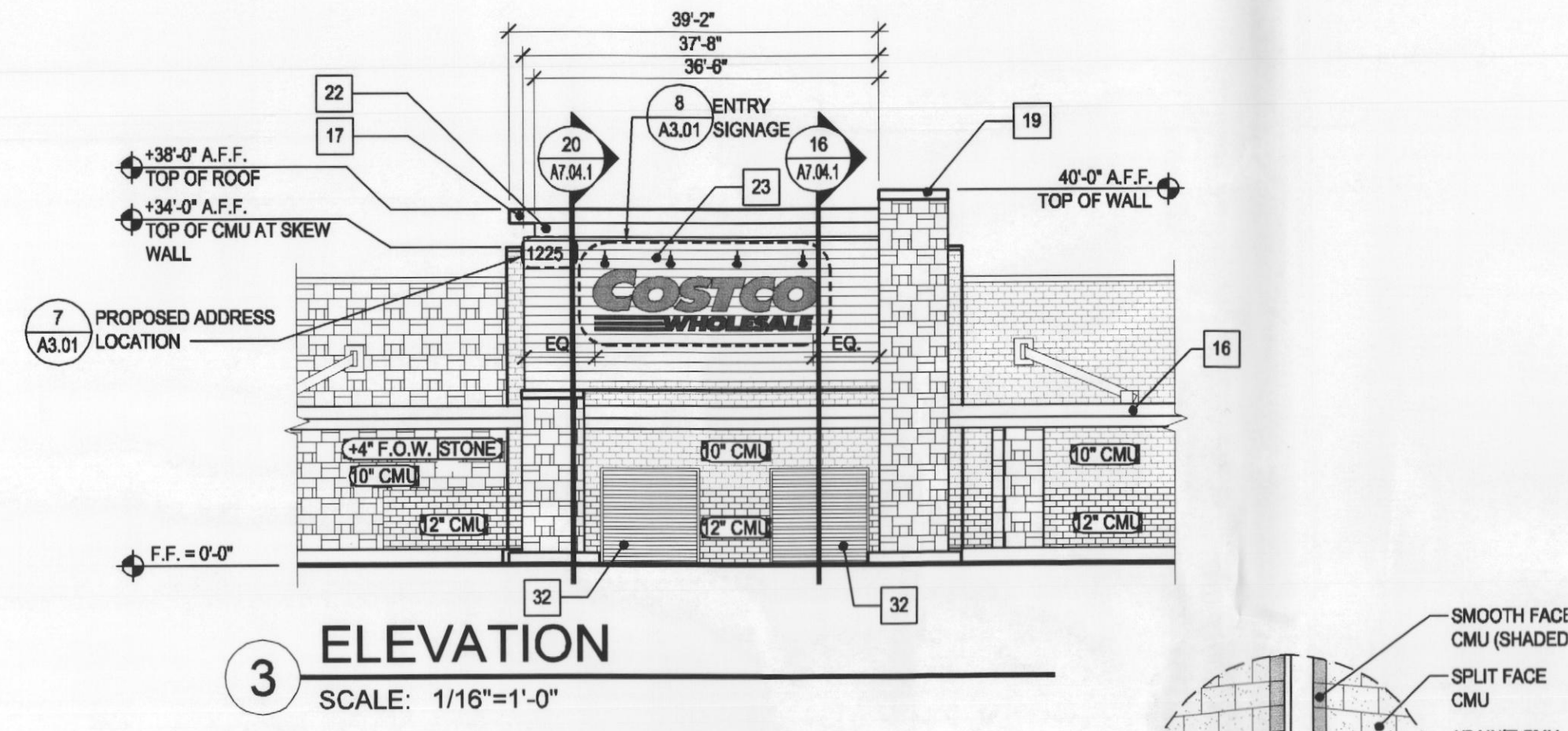
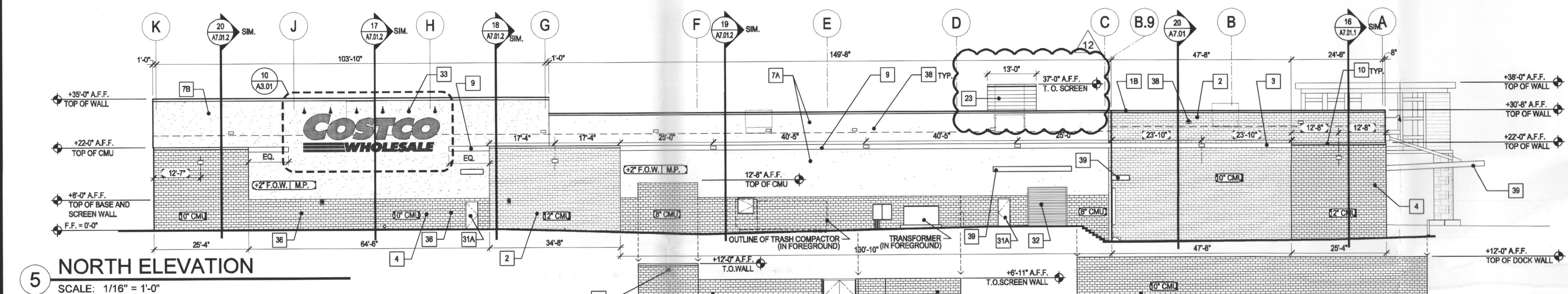
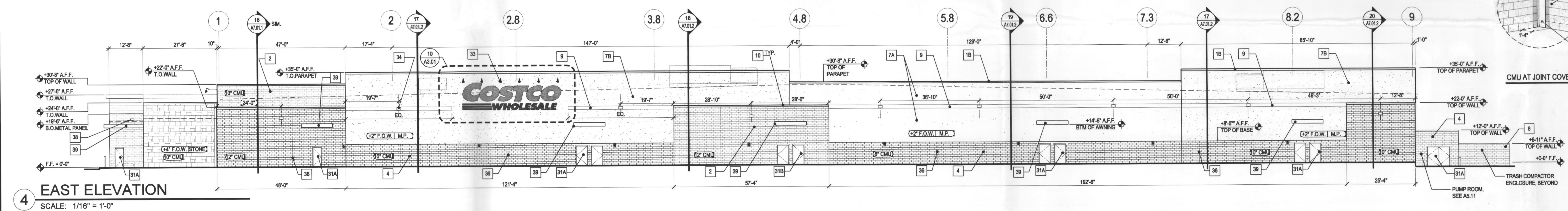
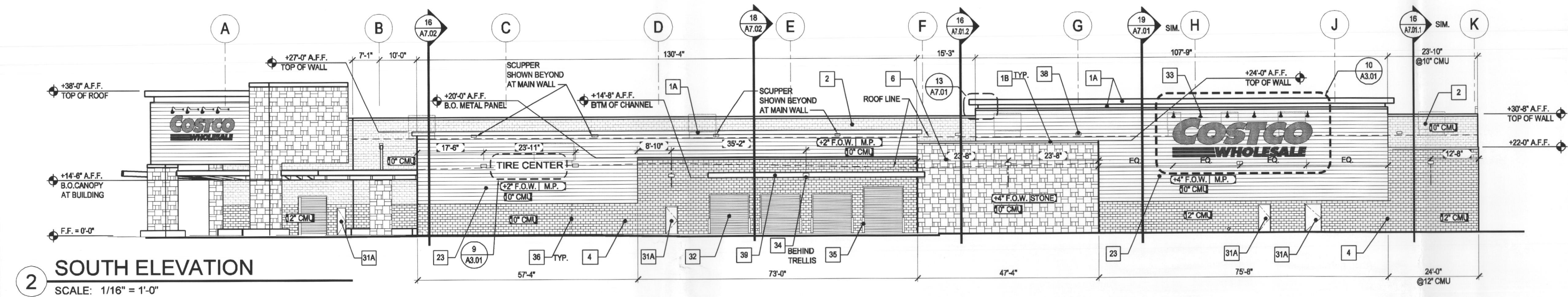
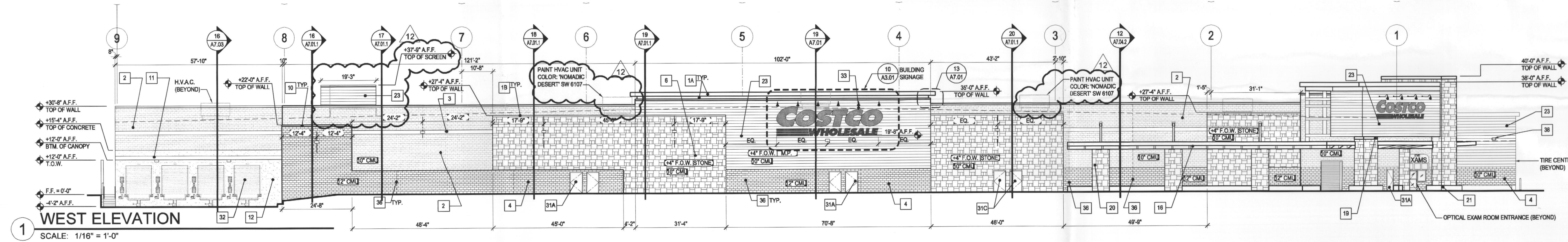
- NOTES**
- DIMENSIONS ARE TO FACE OF CURB, UNLESS OTHERWISE NOTED.
  - ALL PARKING STALLS SHALL BE 10' x 20', UNLESS OTHERWISE NOTED.
  - FIRE LANE SHALL BE CONSTRUCTED PER CITY OF ROCKWALL FIRE DEPARTMENT STANDARDS AND MARKED PER CITY SPECIFICATIONS.
  - FIRE HYDRANTS SHALL HAVE 5' MINIMUM CLEARANCE ON ALL SIDES.
  - FOR INFORMATION ON "BY OTHERS" REFER TO "SITE IMPROVEMENT PLANS FOR ROCKWALL CENTRE CORNERS" PREPARED BY C.P.H. ENGINEERS, INC.
  - EXISTING FLOODPLAIN LIMITS SHOWN TO BE REVISED PER SEPARATE FLOOD STUDY BY C.P.H. ENGINEERS, INC., SUBJECT TO CITY APPROVAL.
  - FIRE LANE ADJACENT TO BUILDING SHALL BE 30' WIDE. MINIMUM 24" FIRE LANE WIDTH AND MINIMUM 39' RADII INDICATED BY DASHED LINE IS FOR INFORMATION PURPOSES ONLY. FIRE LANE SHALL BE STRIPED 30' WIDE.
- THIS CURB INLET AND OIL/WATER SEPARATOR SHALL CAPTURE AND TREAT RUNOFF FROM THE GAS PUMP AREA.
- DOUBLE DETECTOR CHECK VALVE TO BE LOCATED INSIDE BUILDING.

**SITE PLAN**

Scale:	AS SHOWN
Designed by:	IDS
Drawn by:	CDK
Checked by:	DKK
Date:	MAY 11, 2008
Project No.	06000025

**SHEET**  
**C-2**  
OF 17





**COSTCO  
WHOLESALE**  
ROCKWALL, TX

1225 SH 276  
ROCKWALL, TX 75082

**COSTCO  
WHOLESALE  
CORPORATION**  
999 LAKE DRIVE  
ISSAQUAH, WA 98027  
T: 425.313.8100  
www.costco.com

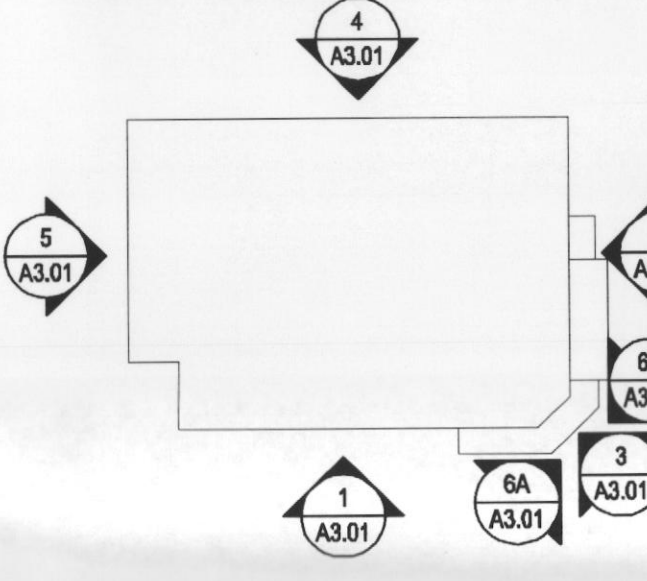
**MULVANNY G2**

1110 112TH AVE. NE | SUITE 500  
BELLEVUE, WA | 98004  
1 425.463.2000 | 1 425.463.2002

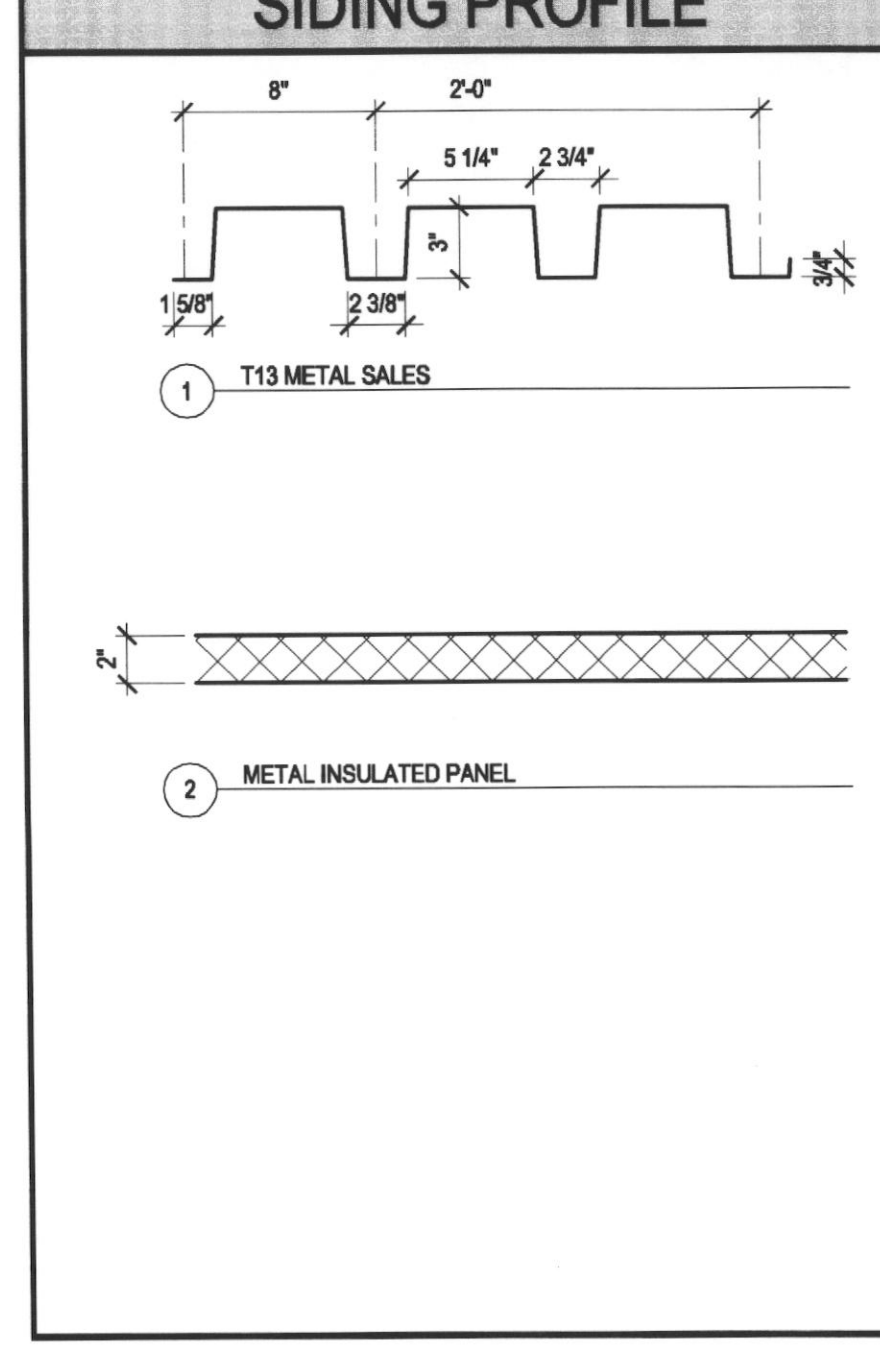
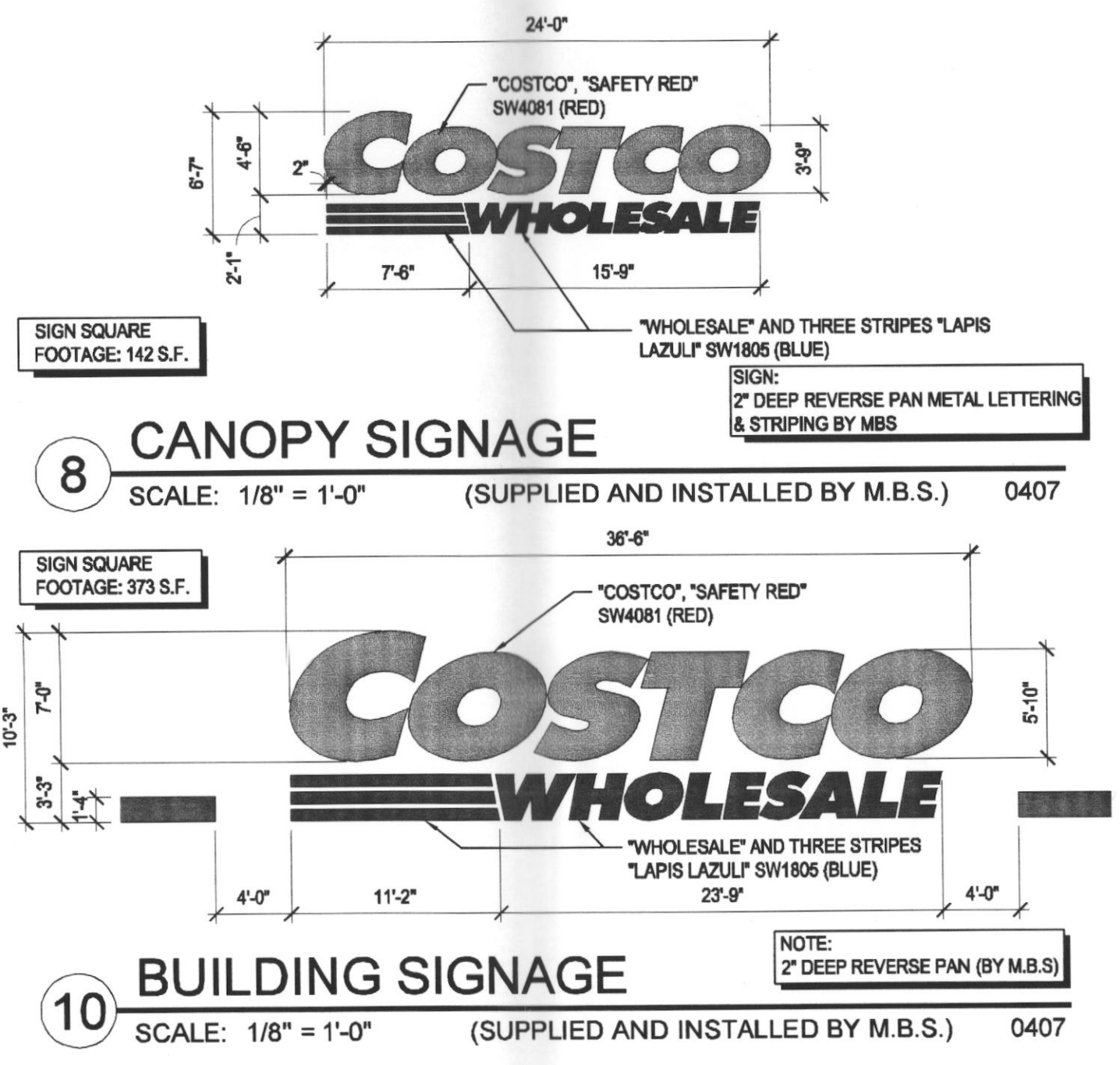
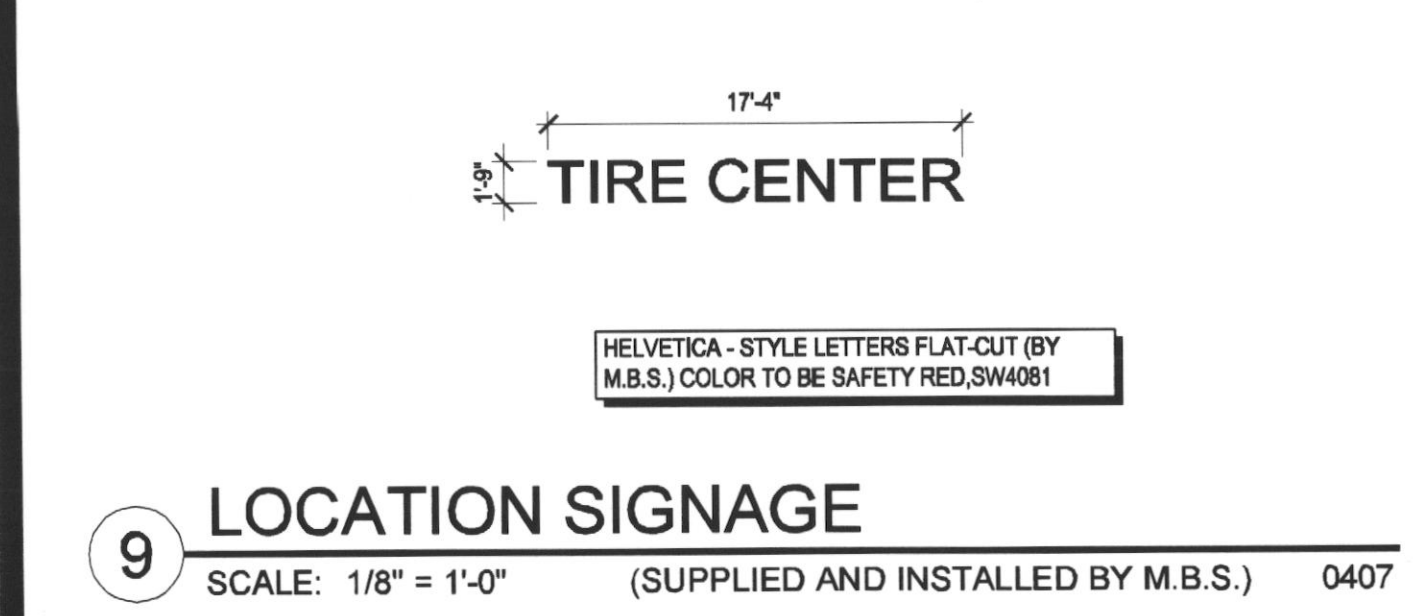
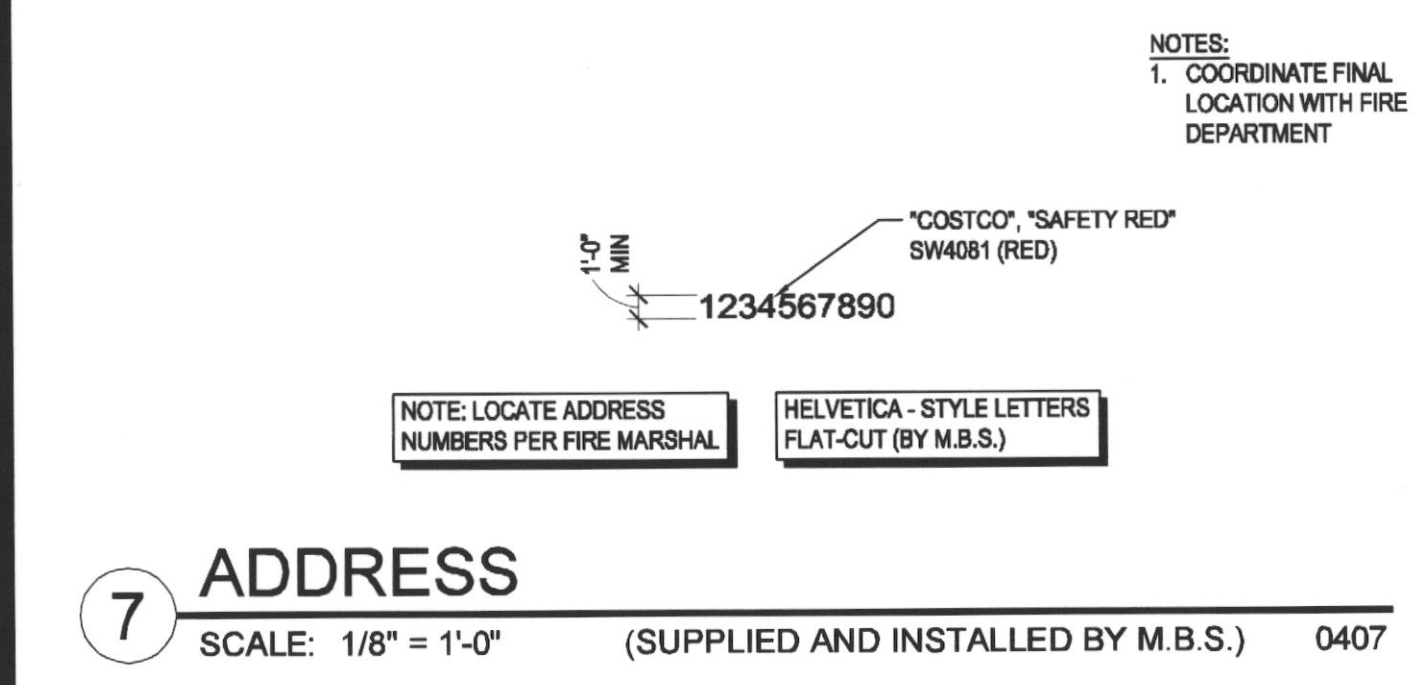
MulvannyG2.com

**CONSTRUCTION  
SET**

**KEY PLAN**



MITCHELL C. SMITH, ARCHITECT



EXTERIOR FINISH SCHEDULE													
	#	ITEM	MATERIAL	FINISH	COLOR	MANUFACTURER / NOTES	#	ITEM	MATERIAL	FINISH	COLOR	MANUFACTURER / NOTES	
WALLS (1-10)	1A	COPING	METAL	KYNAR 500	TERRA BROWN	BY MBS	CANOPY (15-30)	20	COLUMN WRAP	NATURAL STONE	ROUGH BACK SPLIT FACE	GRAY/GOLD	CONTINENTAL LEIDERS
	1B	COPING	METAL	KYNAR 500	SURREY BEIGE	MELROY BY MBS		21	BENCH	CONCRETE	SEALED	NATURAL GRAY	
	2	UPPER WALL	CMU	SMOOTHFACE	NAVJO	FEATHERLITE MORTAR TO MATCH CMU TRENDY/THIN/STAIN GLAZE		22	STEEL FRAME	STEEL	PAINT	ENDURING BRONZE SW 7055	BY MBS PAINTED BY GC
	3	ACCENT BAND	GLAZED CMU	SAFETY RED				23	SIGN PANEL	HORIZONTAL METAL SIDING T13	KYNAR 500	METALLIC CHAMPAGNE	SIDING PROFILE 1 BY MBS
	4	LOWER WALL	CMU	SPLIT FACE	COCO BROWN	FEATHERLITE		24	EGRESS DOOR	METAL	PAINT	TRUSTY TAN SW 6067	BY MBS FIELD PAINT BY GC
	5	ACCENT LOWER WALL	NATURAL STONE	ROUGH BACK SPLIT FACE	GRAY/GOLD	CONTINENTAL LEIDERS		25	EGRESS DOOR	METAL	PAINT	NOMADIC DESERT SW 7055	BY MBS FIELD PAINT BY GC
	6A	WALL	METAL	GRANITESTONE QUARTZ	SURREY BEIGE	SIDING PROFILE 2, PANEL BY MBS		26	EGRESS DOOR	METAL	PAINT	ACCESSIBLE BEIGE SW 7036	BY MBS FIELD PAINT BY GC
	6B	WALL	METAL	GRANITESTONE QUARTZ	FOXWOOD BEIGE	SIDING PROFILE 2, PANEL BY MBS		27	ROLLING SERVICE DOORS	METAL	PAINT	TAN	BY MBS
	7	SCREEN WALL	SPLIT FACE CMU	SPLIT FACE	COCO BROWN	FEATHERLITE		28	LIGHTING FIXTURE	METAL	PRE-FINISH	DARK BRONZE	SEE ELECTRICAL GOODS/NECK
	8	ACCENT BAND	METAL	KYNAR 500	SAFETY RED	BY MBS		29	SHOEBOX LIGHTING FIXTURE	METAL	PRE-FINISH	DARK-BRONZE	SEE ELECTRICAL SHOEBOX
LOGGING DOCK CANOPY (11-15)	9	FLASHING	METAL	KYNAR 500	TERRA BROWN	BY MBS	30	BOLLARD	STEEL	SLEEVE	RED	BY MBS PAINTED BY GC	
	11	CANOPY	METAL	PAINT	ENDURING BRONZE SW 7055	BY MBS, GABLE CLOSER PANEL	31	MASONRY CONTROL JOINT	SEALANT		MATCH MASONRY		
	12	LOWER WALL	CONCRETE	PAINT	NOMADIC DESERT SW 6107	SUPPLIED, INSTALLED BY MBS PAINTED BY GC	32	JOINT COVER	METAL	PRE-FINISH	SURREY BEIGE	MELROY BY MBS	
	13	CANOPY CHANNEL	METAL	PRE-FINISH	ENDURING BRONZE SW 7055		33	JOINT COVER	METAL	KYNAR 500	COLOR TO MATCH ADJACENT WALL	BY MBS	
	14	ACCENT METAL TRIM	METAL	PAINT	ENDURING BRONZE SW 7055	BY MBS	34	TRELLIS	STEEL	PAINT	ENDURING BRONZE SW 7055	BY MBS PAINTED BY GC	
	15	ROOFING	METAL	KYNAR 500		BY MBS, GABLE CLOSER PANEL	35	COMPACT CHANNEL	STEEL	PAINT		BY MBS	
	16	TOP COLUMN ACCENT	METAL	KYNAR 500	SURREY BEIGE	MELROY BY MBS	36	COMPACTOR GATE SCREEN	STEEL	PAINT	TRUSTY TAN SW 6067	BY MBS PAINTED BY GC	

DATE	DESCRIPTION
07.28.09	PERMIT RESUBMITTAL 2
08.07.09	POST-BID ADDENDUM 2
08.22.09	SIGN PERMIT
09.01.09	IRON-FILED HIGH RACKED PERMIT
09.26.09	ISSUE FOR CONSTRUCTION
10.08.09	PR-1
11.20.09	AS-2
12.22.09	PR-6
10.31.09	PR-8
12.18.09	RESUBMITTAL TO BUILDING
03.30.09	PR-21 - CONDENSER SCREENING

07-0196-01  
PM: SONAHOUR SENG  
DRAWN: RK

**EXTERIOR  
ELEVATIONS**

**FILE COPY**

**A3.01**

2008 008

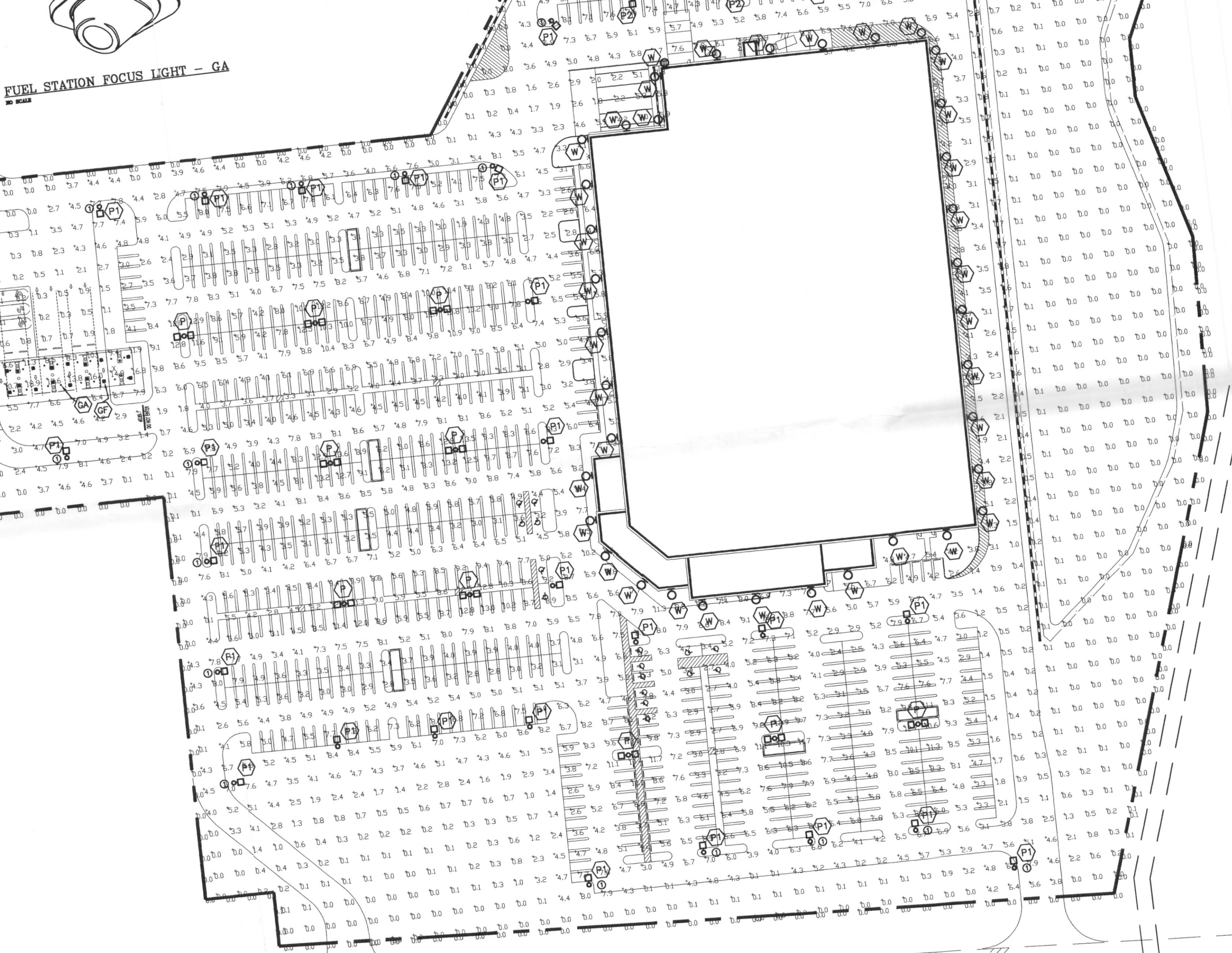




	SKYLIGHTS	SMOKE VENTS	TOTAL
WAREHOUSE	156	47	203
TIRE CENTER	6	3	9
TOTAL	162	50	212



FUEL STATION FOCUS LIGHT - GA  
NO SCALE



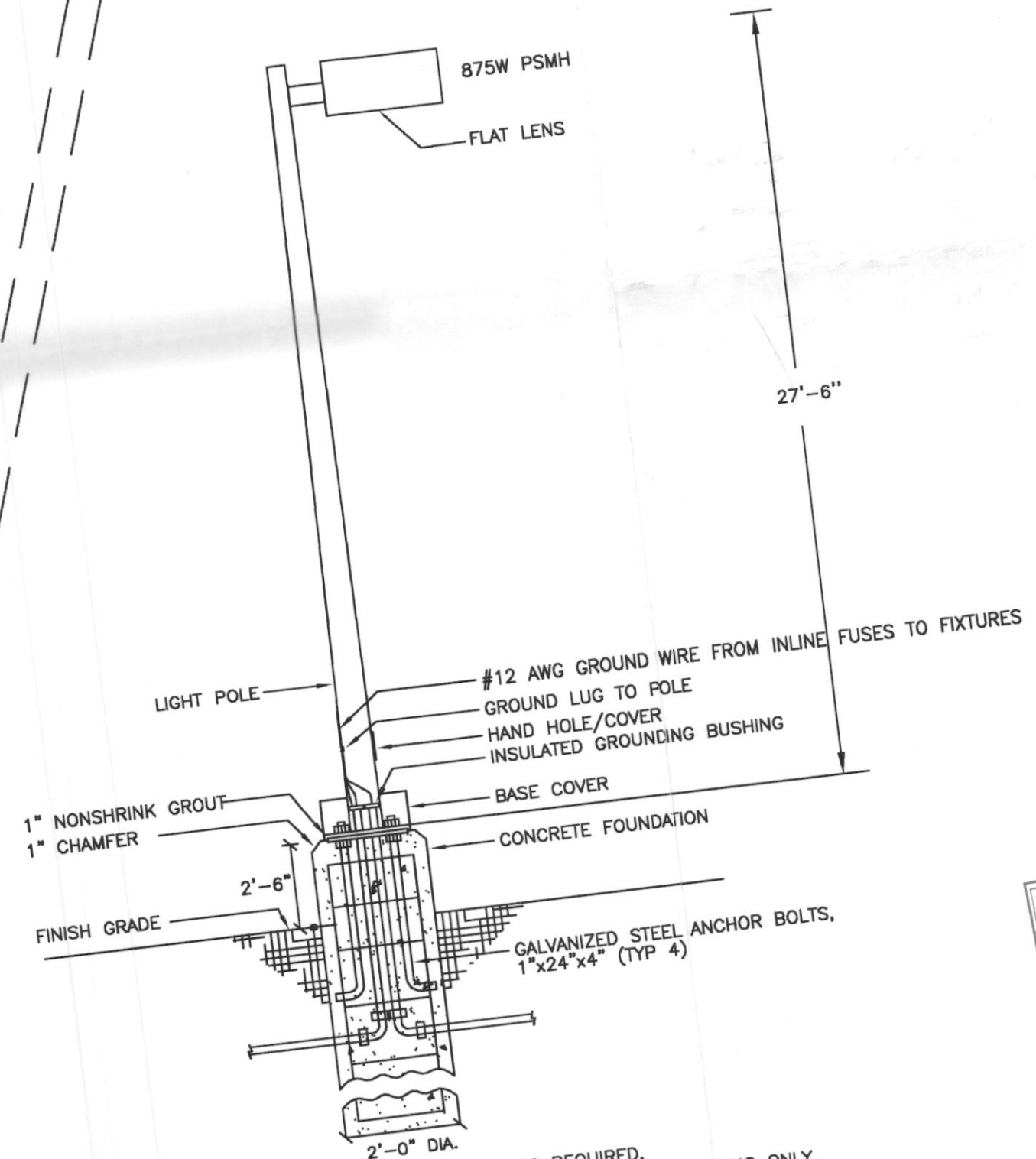
HIGHWAY 276

SITE LIGHTING PLAN  
SCALE 1" = 60'-0"

PLAN NOTES:

- PROVIDE 12" HOUSE SIDE SHIELD ON SIDE OF FIXTURE TOWARDS PROPERTY LINE. SEE DETAIL THIS SHEET.
- PROVIDE 6" HOUSE SIDE SHIELD ON SIDE OF FIXTURE TOWARDS PROPERTY LINE. SEE DETAIL THIS SHEET.

TYPICAL WALL PACK DETAIL  
SCALE: NTS



NOTE: PROVIDE CONCRETE J-BOX AS REQUIRED.  
THIS DETAIL IS FOR ELECTRICAL CONDUITS ROUTING ONLY.  
SEE STRUCTURAL DRAWINGS FOR CONSTRUCTION DETAIL.

POLE BASE DETAIL  
NO SCALE

FIXTURE DESCRIPTION	
P	(2) 875W PSMH, TYPE 5 SQUARE DISTRIBUTION, 27'-6" POLE, WITH 2'-6" BASE, FLAT LENS.
P1	(1) 875W PSMH, TYPE 3 SQUARE DISTRIBUTION, 27'-6" POLE, WITH 2'-6" BASE, FLAT LENS.
P2	(1) 875W PSMH, TYPE 5 SQUARE DISTRIBUTION, 27'-6" POLE, WITH 2'-6" BASE, FLAT LENS.
W	200W PSMH SHOEBOX-TYPE, 20' MOUNTING HEIGHT
GF	(1) 175W SMH, RECESSED FLAT LENS DOWN LIGHT
GA	(1) 100W SMH, RECESSED FOCUS / SPOT LIGHT