


P2017-059- PRELIMINARY PLAT FOR THE STANDARD ROKWALL  
PRELIMINARY PLAT - LOCATION MAP = 



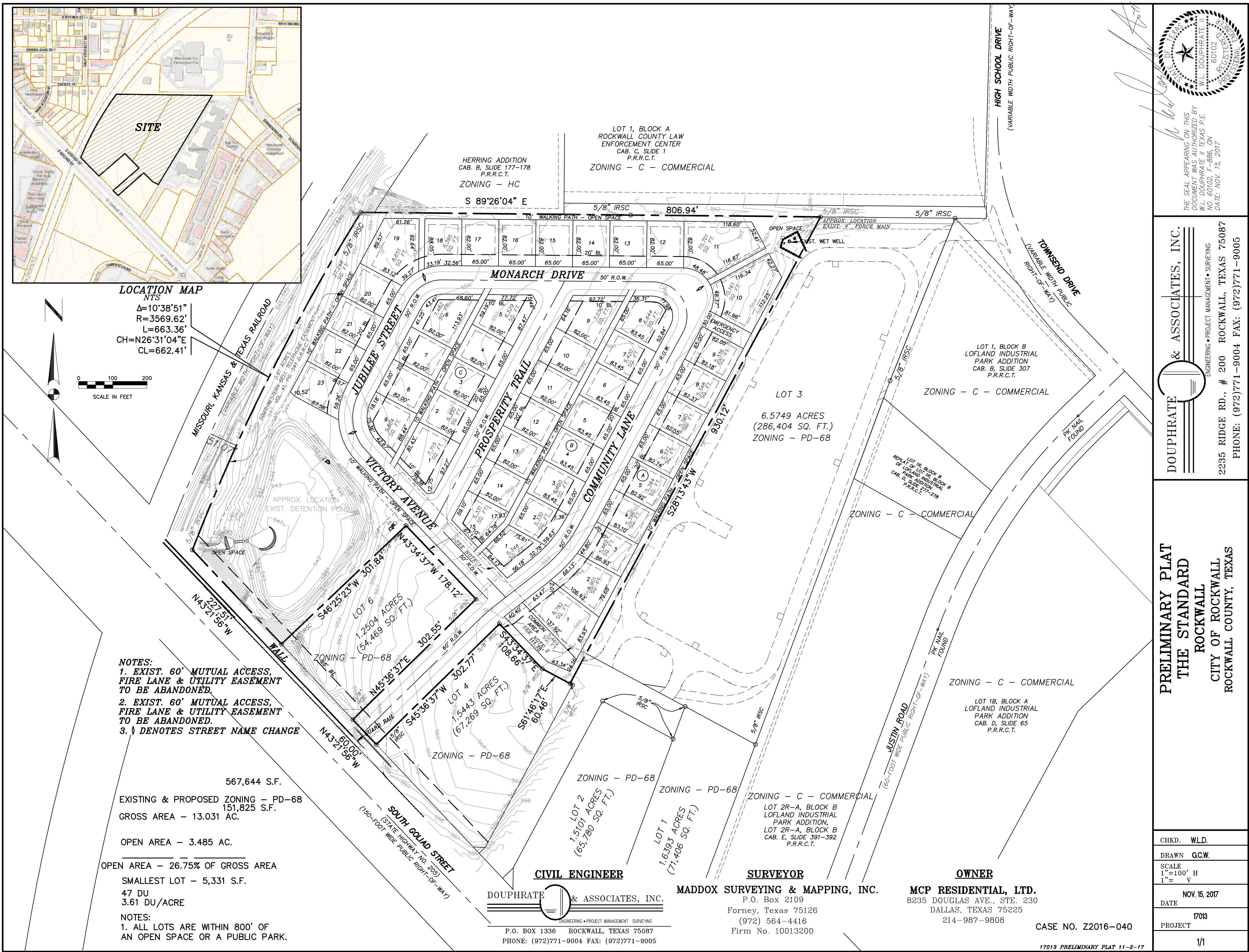
## City of Rockwall

Planning & Zoning Department  
385 S. Goliad Street  
Rockwall, Texas 75032  
(P): (972) 771-7745  
(W): [www.rockwall.com](http://www.rockwall.com)

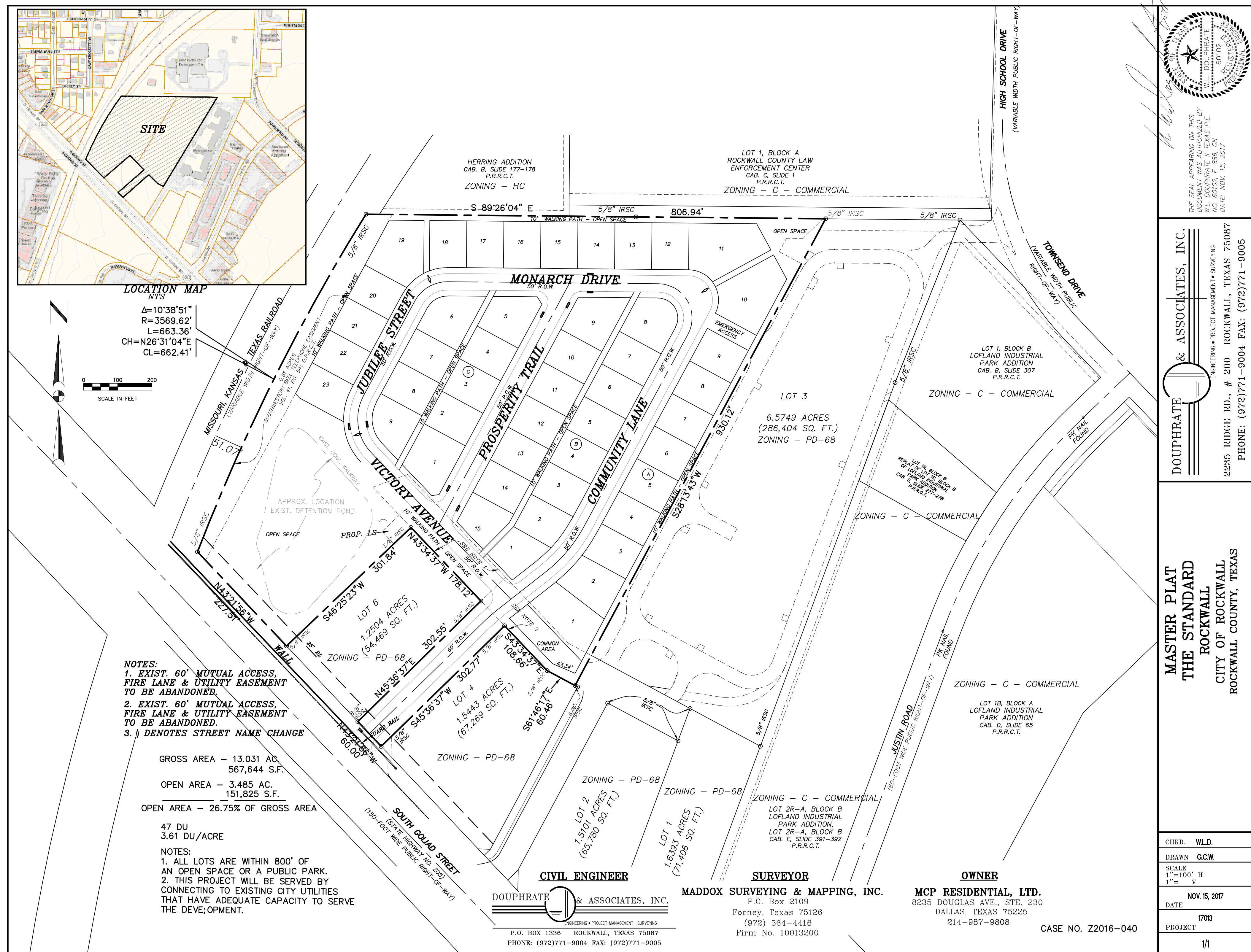
The City of Rockwall GIS maps are continually under development and therefore subject to change without notice. While we endeavor to provide timely and accurate information, we make no guarantees. The City of Rockwall makes no warranty, express or implied, including warranties of merchantability and fitness for a particular purpose. Use of the information is the sole responsibility of the user.



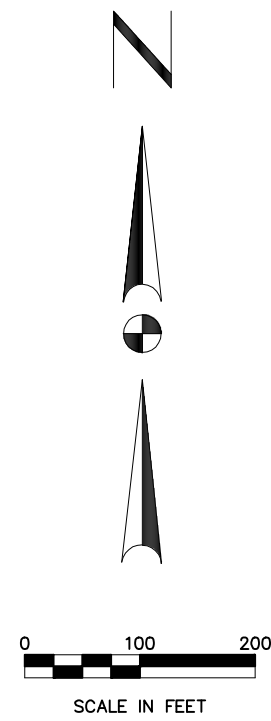




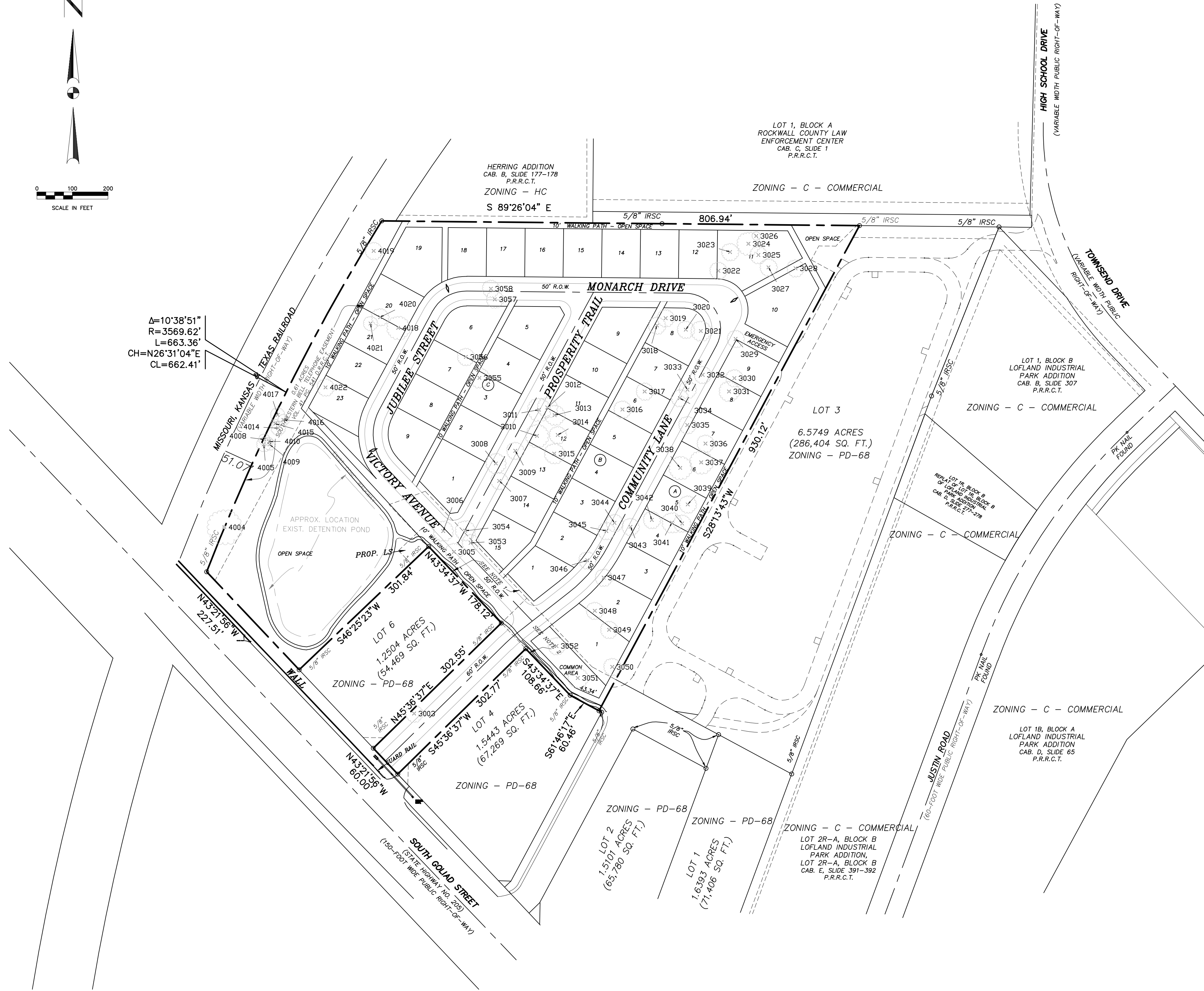








$\Delta=10^{\circ}38'51''$   
 $R=3569.62'$   
 $L=663.36'$   
 $CH=N26^{\circ}31'04''E$   
 $CL=662.41'$



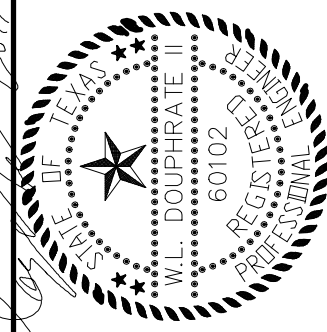
**CIVIL ENGINEER**  
**DOUPHRATE & ASSOCIATES, INC.**  
ENGINEERING • PROJECT MANAGEMENT • SURVEYING  
P.O. BOX 1336 ROCKWALL, TEXAS 75087  
PHONE: (972)771-9004 FAX: (972)771-9005

**SURVEYOR**  
**MADDOX SURVEYING & MAPPING, INC.**  
P.O. Box 2109  
Forney, Texas 75126  
(972) 564-4416  
Firm No. 10013200

**OWNER**  
**MCP RESIDENTIAL, LTD.**  
8235 DOUGLAS AVE., STE. 230  
DALLAS, TEXAS 75225  
214-967-9808

THE STANDARD - ROCKWALL					
TREE LIST					
NO.	TYPE	SIZE (IN.)	REMOVE	MITIGATED IN.	
3003	CEDAR	12	12		6
3005	CEDAR	12	12		6
3006	CEDAR	14	14		6
3007	CEDAR	12	12		6
3008	CEDAR	14	14		7
3009	CEDAR	12	12		6
3010	CEDAR	16	16		8
3011	CEDAR	16	16		8
3012	CEDAR	14	14		7
3013	CEDAR	14	14		7
3014	CEDAR	12	12		6
3015	CEDAR	14	14		7
3016	CEDAR	12	12		6
3017	CEDAR	12	12		6
3018	CEDAR	12	12		6
3019	CEDAR	12	12		6
3020	CEDAR	12	12		6
3021	CEDAR	14	14		7
3022	CEDAR	12	12		6
3023	CEDAR	12	12		6
3024	CEDAR	16	16		8
3025	CEDAR	12	12		6
3026	ELM	6	6		6
3027	CEDAR	12	12		6
3028	CEDAR	12	12		6
3029	CEDAR	12	12		6
3030	CEDAR	12	12		6
3031	CEDAR	14	14		7
3032	CEDAR	12	12		6
3033	CEDAR	12	12		6
3034	CEDAR	12	12		6
3035	CEDAR	12	12		6
3036	CEDAR	12	12		6
3037	CEDAR	16	16		8
3038	CEDAR	16	16		8
	<b>S.T. TREE IN.</b>	<b>448</b>	<b>S.T. TREE IN. REMOVED</b>	<b>448</b>	<b>S.T. MITIGATED IN. 226</b>

NO.	TYPE	SIZE (IN.)	S.T. TREE IN. REMOVED	REMOVE	S.T. MITIGATED IN.	
3039	CEDAR	12		12		6
3040	CEDAR	12		12		6
3041	CEDAR	14		14		6
3042	CEDAR	12		12		6
3043	CEDAR	12		12		6
3044	CEDAR	12		12		6
3045	CEDAR	12		12		6
3046	CEDAR	12		12		6
3047	CEDAR	12		12		6
3048	CEDAR	12		12		6
3049	CEDAR	12		12		6
3050	CEDAR	12		12		6
3051	CEDAR	14		14		7
3052	CEDAR	12		12		6
3053	CEDAR	12		12		6
3054	CEDAR	14		14		7
3055	CEDAR	14		14		7
3056	CEDAR	12		12		6
3057	CEDAR	12		12		6
3058	CEDAR	12		12		6
4004	ELM	24		SAVE		
4005	CEDAR ELM	10		SAVE		
4008	CEDAR ELM	8		SAVE		
4009	CEDAR ELM	8		SAVE		
4010	CEDAR ELM	6		SAVE		
4014	CEDAR ELM	10		10		10
4015	CEDAR ELM	6		SAVE		
4016	CEDAR ELM	8		SAVE		
4017	CEDAR ELM	10		SAVE		
4018	CEDAR	16		16		8
4019	CEDAR ELM	12		SAVE		
4020	CEDAR	12		12		6
4021	ELM	10		10		10
4022	CEDAR	12		12		6
	<b>TOTAL TREE IN.</b>	<b>848</b>	<b>TOTAL IN. REMOVED</b>	<b>756</b>	<b>TOTAL MITIGATED IN.</b>	<b>389</b>



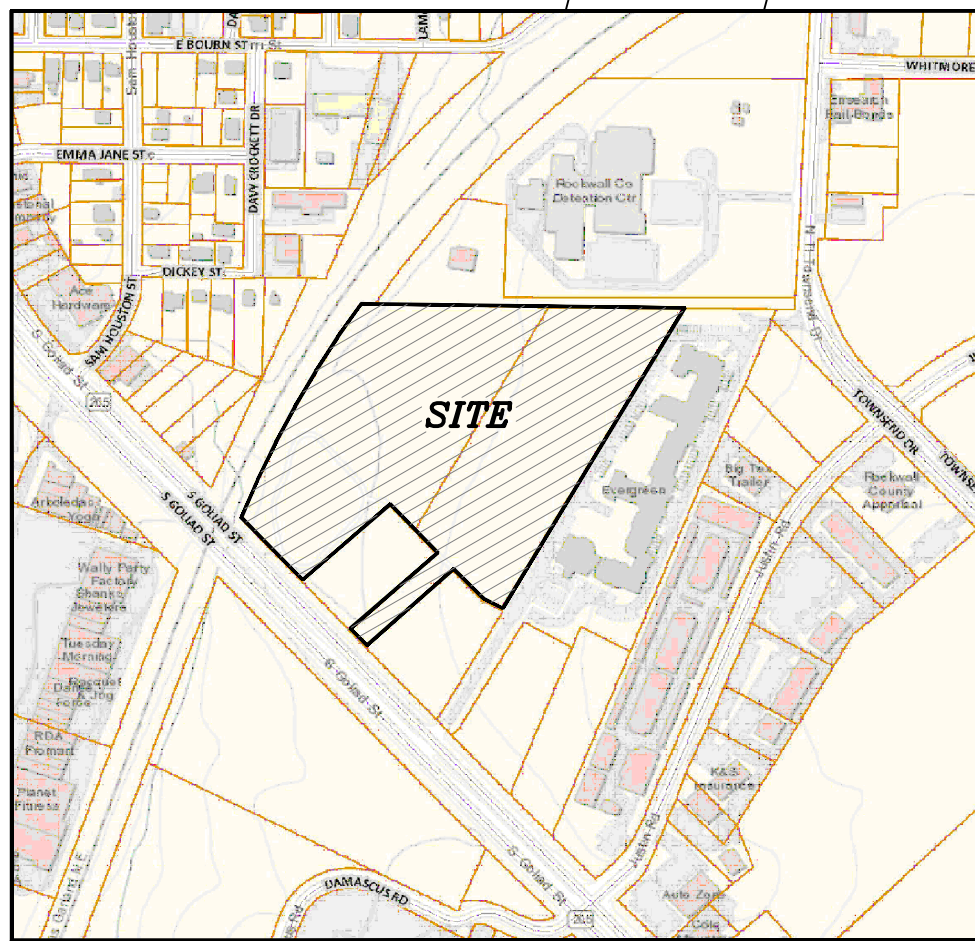
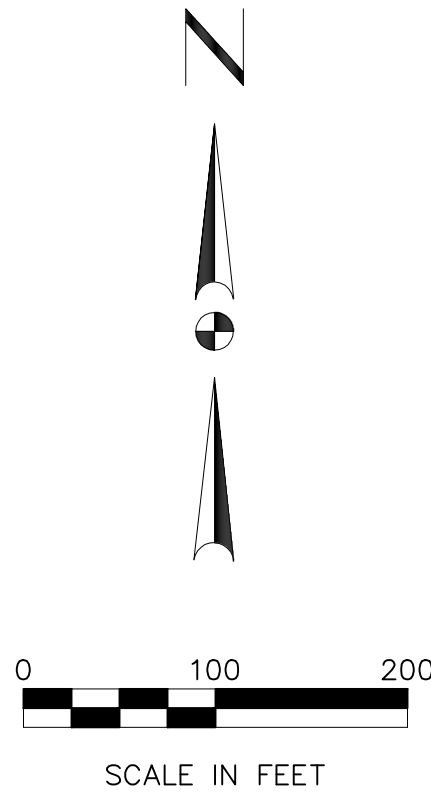
THE SEAL APPEARING ON THIS DOCUMENT WAS AUTHORIZED BY W.L. DOUPHRATE II, TEXAS P.E. NO. 60102, F-886, ON DATE: NOVEMBER 15, 2017

**DOUPHRATE & ASSOCIATES, INC.**  
ENGINEERING • PROJECT MANAGEMENT • SURVEYING  
2235 RIDGE RD., # 200 ROCKWALL, TEXAS 75087  
PHONE: (972)771-9004 FAX: (972)771-9005

**TREE SURVEY**  
**THE STANDARD**  
**ROCKWALL**  
CITY OF ROCKWALL  
ROCKWALL COUNTY, TEXAS

REVISION  
W.L.D.  
CHECKED  
G.C.W.  
DRAWN  
SCALE  
1"=100'H  
1"= V  
NOV. 15, 2017  
DATE  
17013  
PROJECT  
1





$\Delta=10^{\circ}38'51''$   
 $R=3569.62'$   
 $L=663.36'$   
 $CH=N26^{\circ}31'04''E$   
 $CL=662.41'$



PRE-CONSTRUCTION DRAINAGE TABLE

DRAINAGE AREA NO.	ACRES	T.C.	C	I 100 YR.	Q 100 YR.	SUM Q 100 YR.	COMMENTS
TOTAL SITE INCLUDING OFF-SITE	15.07	10	0.35	9.8	51.69		

POST-CONSTRUCTION DRAINAGE TABLE

DRAINAGE AREA NO.	ACRES	T.C.	C	I 100 YR.	Q 100 YR.	SUM Q 100 YR.	COMMENTS
LINE A							
1	1.99	10	0.5	9.8	9.75	9.75	
2	0.79	"	"	"	3.87	13.62	
3	0.42	"	"	"	2.06	15.68	
4	0.36	"	"	"	1.76	17.44	
5	1.46	"	"	"	7.15	22.59	
6	0.66	"	"	"	3.23	25.82	
7	0.89	"	"	"	4.36	30.18	
8	1.07	"	"	"	5.24	35.42	
FROM LINE B					14.75	50.17	
LINE B							
9	1.31	10	0.5	9.8	6.42	6.42	
10	0.72	"	"	"	3.53	9.95	
11	0.57	"	"	"	2.79	12.74	
12	0.41	"	"	"	2.01	14.75	TO LINE A
LINE C							
OS-1	0.79	10	0.9	9.8	6.75	6.75	OFF SITE
13	0.17	"	"	"	1.50	8.25	
OVERALL							TO DETENTION
LINES A, B & C						58.42	
14	0.18	10	0.9	9.8	1.56	59.98	
OS-2	1.25	"	"	"	11.03	71.01	OFF SITE
15	2.03	"	"	"	17.90	88.91	

CIVIL ENGINEER  
DOUPHRA  
& ASSOCIATES, INC.  
P.O. BOX 1336 ROCKWALL, TEXAS 75087  
PHONE: (972)771-9004 FAX: (972)771-9005

SURVEYOR  
MADDOX SURVEYING & MAPPING, INC.  
P.O. Box 2109  
Forney, Texas 75126  
(972) 564-4416  
Firm No. 10013200

OWNER  
MCP RESIDENTIAL, LTD.  
8235 DOUGLAS AVE., STE. 230  
DALLAS, TEXAS 75225  
214-987-9808

CASE NO. Z2016-040

17013 PREL DRAINAGE MAP

REVISION  
WLD.  
CHECKED  
DAC.  
DRAWN  
SCALE  
1"=100' H  
1"= V  
NOVEMBER 15, 2017  
DATE  
17013  
PROJECT  
10

PRELIMINARY DRAINAGE MAP  
THE STANDARD  
CITY OF ROCKWALL  
ROCKWALL COUNTY, TEXAS

DOUPHRA  
& ASSOCIATES, INC.  
ENGINEERING • PROJECT MANAGEMENT • SURVEYING  
2235 RIDGE RD., # 200 ROCKWALL, TEXAS 75087  
PHONE: (972)771-9004 FAX: (972)771-9005

THE SEAL APPEARING ON THIS DOCUMENT WAS AUTHORIZED BY W.L. DOUPHRA II TEXAS P.E. NO. 60102 F-286, ON 10/11/07 DATE: NOVEMBER 15, 2017.



