

City of Rockwall

Planning & Zoning Department
385 S. Goliad Street
Rockwall, Texas 75032
(P): (972) 771-7745
(W): www.rockwall.com

The City of Rockwall GIS maps are continually under development and therefore subject to change without notice. While we endeavor to provide timely and accurate information, we make no guarantees. The City of Rockwall makes no warranty, express or implied, including warranties of merchantability and fitness for a particular purpose. Use of the information is the sole responsibility of the user.



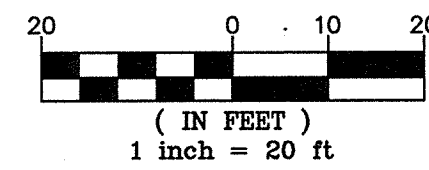


Know what's below.
Call before you dig.

BUILDING SETBACKS:

BUILDING SETBACK SHOWN ON PLAN

ZONING: C- (COMMERCIAL)
/IH 30 OVERLAY DISTRICT



1200SF-8(S)-2015v2

SHEET NO.

C-1

LEGEND

EXISTING

| | |
|------------------------------|----------------------------|
| ⊕ BENCHMARK | ⊕ WATER MANHOLE |
| ⊕ PROPERTY CORNER | ⊕ WATER METER |
| ⊕ MARKER FOUND - AS NOTED | ⊕ WATER VALVE |
| ⊕ MONUMENT FOUND | ⊕ FIRE HYDRANT |
| ⊕ 1/2" IRON ROD WITH CAP SET | ⊕ SAN. SEWER MANHOLE |
| ⊕ STAMPED "SPOONER & ASSOC" | ⊕ SAN. SEWER CLEANOUT |
| ⊕ MONUMENT SET | ⊕ IRRIGATION CONTROL VALVE |
| ⊕ POWER POLE | ⊕ SIDEWALK |
| ⊕ LIGHT POLE | ⊕ BOLLARD POST |
| ⊕ ELECTRIC METER | ⊕ SIGN |
| ⊕ ELECTRIC LINE MARKER | |
| ⊕ ELECTRIC PULL BOX | |
| ⊕ ELECTRIC MANHOLE | |
| ⊕ ELECTRIC BOX (PANEL) | |
| ⊕ TELEPHONE MARKER | |
| ⊕ TELEPHONE RISER | |
| ⊕ TELEPHONE MANHOLE | |
| ⊕ TELEPHONE PULL BOX | |
| ⊕ FIBER OPTIC MARKER | |
| ⊕ FIBER OPTIC PULL BOX | |
| ⊕ TRAFFIC SIGNAL BOX | |
| ⊕ MAILBOX | |
| ⊕ GAS MARKER | |
| ⊕ GUY POLE | |
| ⊕ STORM DRAIN MANHOLE | |
| ⊕ INLET RIM | |
| | — OVE — OVERHEAD ELEC. |
| | — E — U.G. ELECTRIC |
| | — T — U.G. TELE. LINE |
| | — FO — U.G. FIBER OPTIC |
| | — CATV — U.G. CABLE TV |
| | — GAS — U.G. GAS |
| | — W — U.G. WATER |
| | — SS — U.G. SAN. SEWER |
| | — SO — U.G. STORM SEWER |
| | ⊕ TREE |
| | ⊕ CONCRETE AREA |

PROPOSED

| | |
|-----|--|
| --- | BOUNDARY LINE |
| --- | CONCRETE CURB AND GUTTER |
| --- | CONSTRUCTION FENCE (SEE CIVIL DETAILS) |
| --- | CONSTRUCTION FENCE ON PAVEMENT (SEE CIVIL DETAILS) |
| --- | BUILDING/CANOPY CONTROL POINT |

SITE NOTES

- 2F DRILL (2) 3/4" x 5/8" DIA. HOLES (1) EACH FOR OPEN POSITION & CLOSED POSITION OF GATES. TO BE USED ON BOTH SIDES OF GATE. SEE DUMPSTER DETAIL.
- 8B OVERHEAD CANOPY - (TYP.-PER CANOPY PLANS)
- 12A 4" TRAFFIC YELLOW LANE STRIPE (SEE LENGTH INDICATED AT SYMBOL).
- 12D 4" WIDE PAINTED STRIPES, 2.0' O.C. @ 45° (SEE SIZE COLOR INDICATED AT SYMBOL).
- 12H 4" DOUBLE TRAFFIC YELLOW LANE STRIPE (SEE LENGTH INDICATED AT SYMBOL).
- 12J FIRE LANE STRIPING PER LOCAL CODES.
- 12M CONTRACTOR TO ENSURE THAT ANY LIGHT POLES OR HANDICAP PARKING SIGNS ARE AT LEAST 2' FROM BACK OF CURB TO PREVENT THE VEHICLES FROM STRIKING THESE ITEMS.
- 14J GC TO INSTALL (1) 4" PVC SLEEVE FOR IRRIGATION LINE. SEE UTILITY PLAN FOR INSTALLATION REQUIREMENTS.
- 14K GC TO INSTALL (2) 4" PVC SLEEVES FOR FUTURE USE. SEE UTILITY PLAN FOR INSTALLATION REQUIREMENTS.
- 16A MURPHY OIL FREESTANDING SIGN. PER APPROVED ELEVATION.
- 21D EDGE OF CONCRETE SLAB. PER TANK/PIPING PLANS.
- 21E UNDERGROUND STORAGE TANKS (1) 25,000 GAL-REGULAR, (1) 8,000 GAL-PREMIUM, (1) 10,000 GAL-DIESEL, (1) 8,000 GAL-E-85.
- 21G AIR VACUUM UNIT WITH 4' x 7' CONCRETE SLAB.
- 21H ATM LOCATION.
- 21K MURPHY USA ID SIGN. PER APPROVED ELEVATION.
- 21L PRICE SIGN PER APPROVED ELEVATION.
- 21P 7' x 10' CONCRETE PAD FOR PROPANE TANKS.
- 21T MAILBOX (CONTRACTOR TO COORDINATE LOCATION WITH MURPHY AND POSTMASTER PRIOR TO INSTALLATION).
- 21U 5' x 7' CONCRETE SLAB FOR ICE UNIT. SEE NUMBER INDICATED AT SYMBOL.
- 21V CONCRETE PAD FOR VENT RISERS. PER TANK & PIPING PLANS.
- 51B LIMITS OF SANITARY AND PAVEMENT REMOVAL.
- 70A TEMP. TRAFFIC BARRELS.

SITE DETAILS - SEE DETAIL SHEETS

- 1B TYPE "B" CONCRETE CURB & GUTTER.
- 2E DUMPSTER ENCLOSURE.
- 2F CONSTRUCTION SAFETY FENCE.
- 5A BRICK VENEER MASONRY SCREEN WALL.
- 5B GUARD POST (SINGLE).
- 5B TRAFFIC SIGN IN BOLLARD.
- 5S ACCESSIBLE / VAN ACCESSIBLE PARKING SIGN (TYP.).
- 9U ACCESSIBLE PARKING SYMBOL (SEE PAINT COLOR INDICATED AT SYMBOL).
- 10A TRAFFIC FLOW ARROW (TYP.).
- 10B STOP BAR (TYP.).
- 11K "NO PARKING" SIGN.
- 12G "STOP" SIGN.

GENERAL SITE NOTES

- ALL DIMENSIONS SHOWN ARE TO THE FACE OF CURB UNLESS OTHERWISE NOTED.
- ALL CURB RETURN RADII SHALL BE 5', AS SHOWN TYPICAL ON THIS PLAN, UNLESS OTHERWISE NOTED.
- UNLESS OTHERWISE SHOWN, CALLED OUT OR SPECIFIED HEREON:
 - ALL CURB AND GUTTER ADJACENT TO CONCRETE PAVING SHALL BE INSTALLED PER DETAIL 1B.
 - PAVEMENT SHALL BE INSTALLED IN ACCORDANCE WITH THE PAVING PLAN OVER THE ENTIRE PARKING LOT AREA AND ALL APPROACH DRIVES.
 - SEE ASSOCIATED PLANS FOR CANOPY, COLUMN, PUMP ISLAND DETAILS AND LAYOUT.
- CONTRACTOR SHALL BEGIN CONSTRUCTION OF ANY LIGHT POLE BASES FOR RELOCATED LIGHT FIXTURES AND RELOCATION OF ELECTRICAL SYSTEM AS SOON AS DEMOLITION BEGINS. CONTRACTOR SHALL BE AWARE THAT INTERRUPTION OF POWER TO ANY LIGHT POLES OR SIGNS SHALL NOT EXCEED 24 HOURS.
- IF DEMOLITION OR CONSTRUCTION ON SITE WILL INTERFERE WITH THE WAL-MART TRAFFIC FLOW OR ADJACENT PROPERTY OWNER'S TRAFFIC FLOW, THE CONTRACTOR SHALL COORDINATE WITH THE WAL-MART CONSTRUCTION/STORE MANAGER AND/OR ADJACENT PROPERTY OWNER, TO MINIMIZE THE IMPACT ON TRAFFIC FLOW. TEMPORARY RE-ROUTING OF TRAFFIC IS TO BE ACCOMPLISHED BY USING DOT APPROVED TRAFFIC BARRICADES, BARRELS, AND/OR CONES. TEMPORARY SIGNAGE AND FLAGMEN MAY BE ALSO NECESSARY.
- ALL WAL-MART PROPERTY DAMAGED DUE TO CONSTRUCTION ACTIVITIES MUST BE REPLACED/RESTORED TO MATCH THE EXISTING TYPE AND QUALITY OF WORK AND MATERIALS, AND IS SUBJECT TO WAL-MART APPROVAL.
- CONTRACTOR TO PROTECT EXISTING LANDSCAPE/IRRIGATION MATERIAL.
- ALL SLOPES AND AREAS DISTURBED BY CONSTRUCTION SHALL BE GRADED SMOOTH AND FOUR INCHES OF TOPSOIL APPLIED. IF ADEQUATE TOPSOIL IS NOT AVAILABLE ON SITE, THE CONTRACTOR SHALL PROVIDE TOPSOIL, APPROVED BY THE OWNER, AS NEEDED. THE AREA SHALL THEN BE SEEDED/SODDED, FERTILIZED, MULCHED, WATERED AND MAINTAINED UNTIL HARDY GRASS GROWTH IS ESTABLISHED IN ALL AREAS. ANY AREAS DISTURBED FOR ANY REASON PRIOR TO FINAL ACCEPTANCE OF THE PROJECT SHALL BE CORRECTED BY THE CONTRACTOR AT NO ADDITIONAL COST TO THE OWNER.
- THE MURPHY STATION WILL NOT DROP THE WAL-MART GREEN SPACE BELOW CITY REQUIREMENTS.
- CONTRACTOR IS TO VERIFY LOCATION OF WAL-MART IRRIGATION SYSTEM, VALVE BOXES, CONTROL BOXES, BACKFLOW PREVENTION DEVICES AND OTHER ITEMS WHICH ARE PART OF THE SYSTEM. IF DAMAGES THEY MUST BE REPAIRED AT CONTRACTOR'S COST.
- THE LOCATION OF THE CONSTRUCTION FENCE ON THE DRAWINGS IS FOR GRAPHICAL REPRESENTATION ONLY. THE CONTRACTOR IS TO ENSURE THAT THE CONSTRUCTION FENCE ENCOMPASSES THE ENTIRE WORK AREA.
- CONTRACTOR SHALL PURCHASE AND INSTALL A MAILBOX, AND SHALL COORDINATE LOCATION OF MAILBOX WITH MURPHY CONSTRUCTION MANAGER AND/OR ON-SITE REPRESENTATIVE AND LOCAL POSTMASTER.
- ALL PROPOSED PAVEMENT STRIPING OR MARKINGS SHALL FOLLOW THE SPECIFICATIONS FOR PAINT INCLUDED IN DETAIL 10A.

PARKING INFORMATION: MURPHY OIL

| DESCRIPTION | BUILDING AREA (S.F.) | REQUIRED: | | | | |
|-------------------|----------------------|------------|------------|----------------|----------------|-------|
| | | RATIO | SPACES | | | |
| MURPHY OIL | 1200 | /1000 S.F. | REGULAR | ACCESSIBLE | VAN ACCESSIBLE | TOTAL |
| | | 5 | | | 1 | 6 |
| STALL DIMENSIONS: | | | | | | |
| 90': 9' x 18' | | | | | | |
| PROVIDED: | | | | | | |
| RATIO | | SPACES | | | | |
| /250 S.F. | | REGULAR | ACCESSIBLE | VAN ACCESSIBLE | TOTAL | |
| 5 | | 1 | | 1 | 11 | |

E1 = (HATCHED)
10' PRIVATE UTILITY ESMT.
EXHIBIT "D" 1H
VOL. 4407, PG. 191,
D.R.R.C.T.

I-30 FRONTAGE
ROAD
(VARIABLE WIDTH RIGHT-OF-WAY)

R=3,665.14'
L=63.97'
CHB=N69°55'57"E
CHL=63.97'

GreenbergFarrow

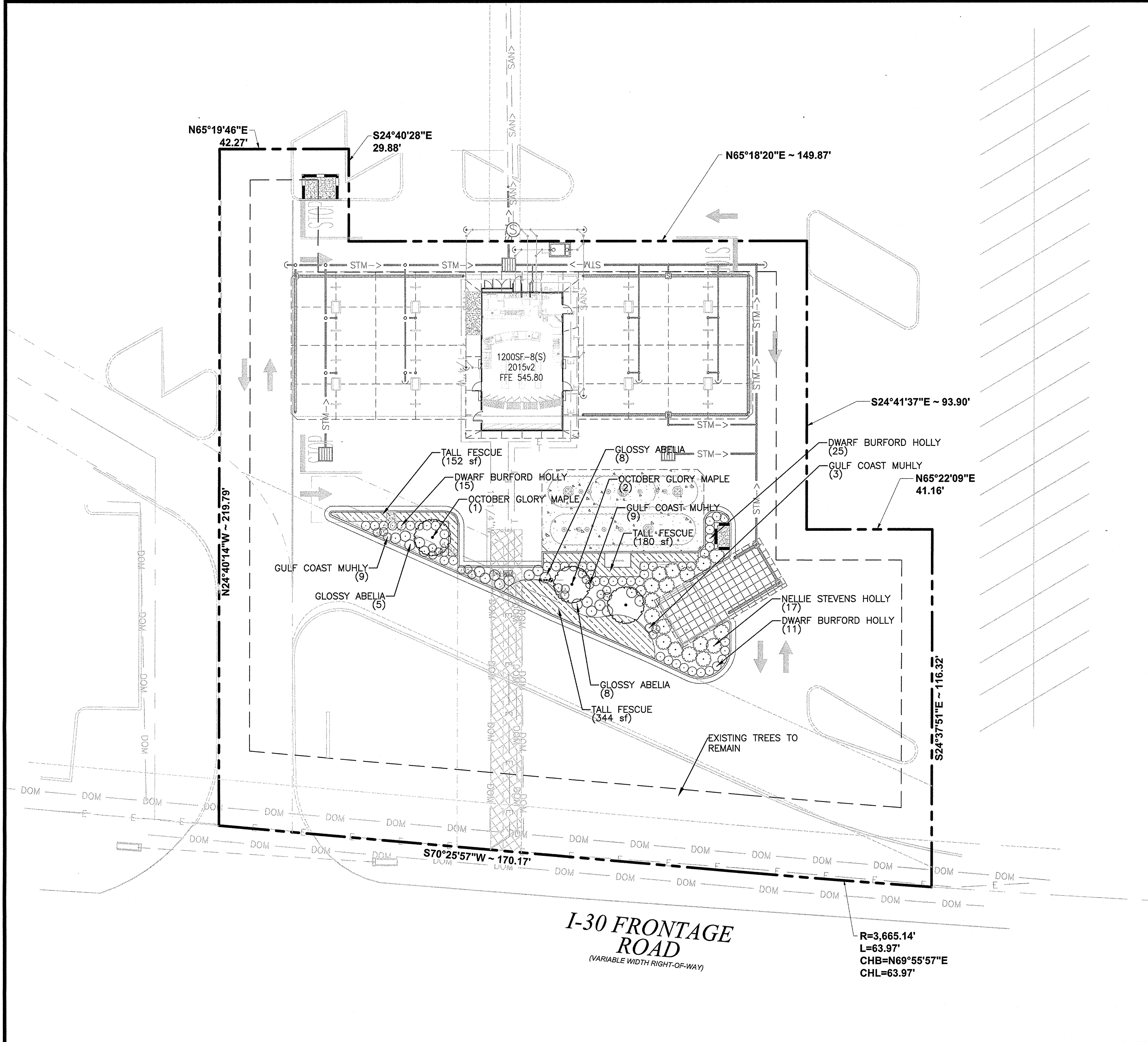
1430 W. PEACHTREE ST., NW SUITE 200
ATLANTA, GA 30309
PHONE: (404) 524-1000
FAX: (404) 524-1000
DWG NAME: ROCKWALL TEXAS
JOB NO.: 20150471
TEXAS REGISTRATION NO. F-4580

MURPHY OIL USA, INC.

MURPHY 200 PEACH STREET
P.O. BOX 7000
USA

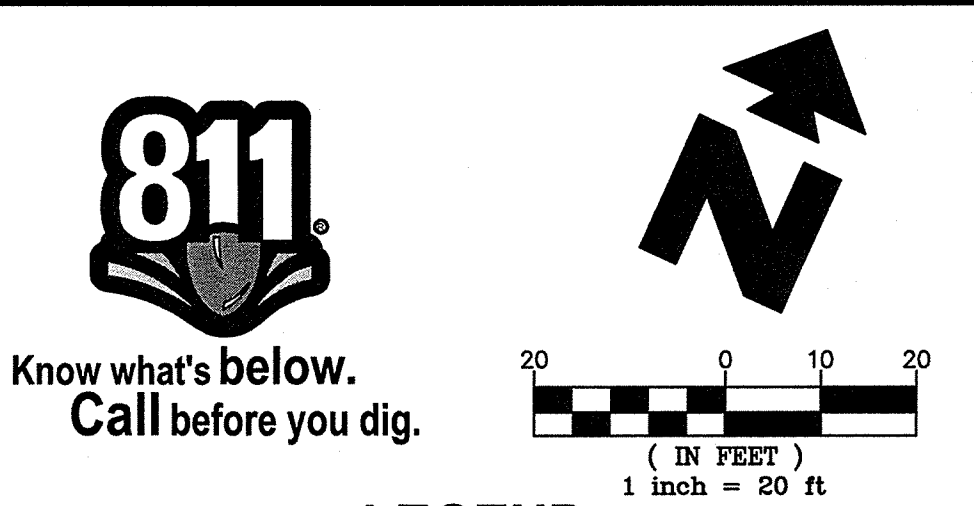
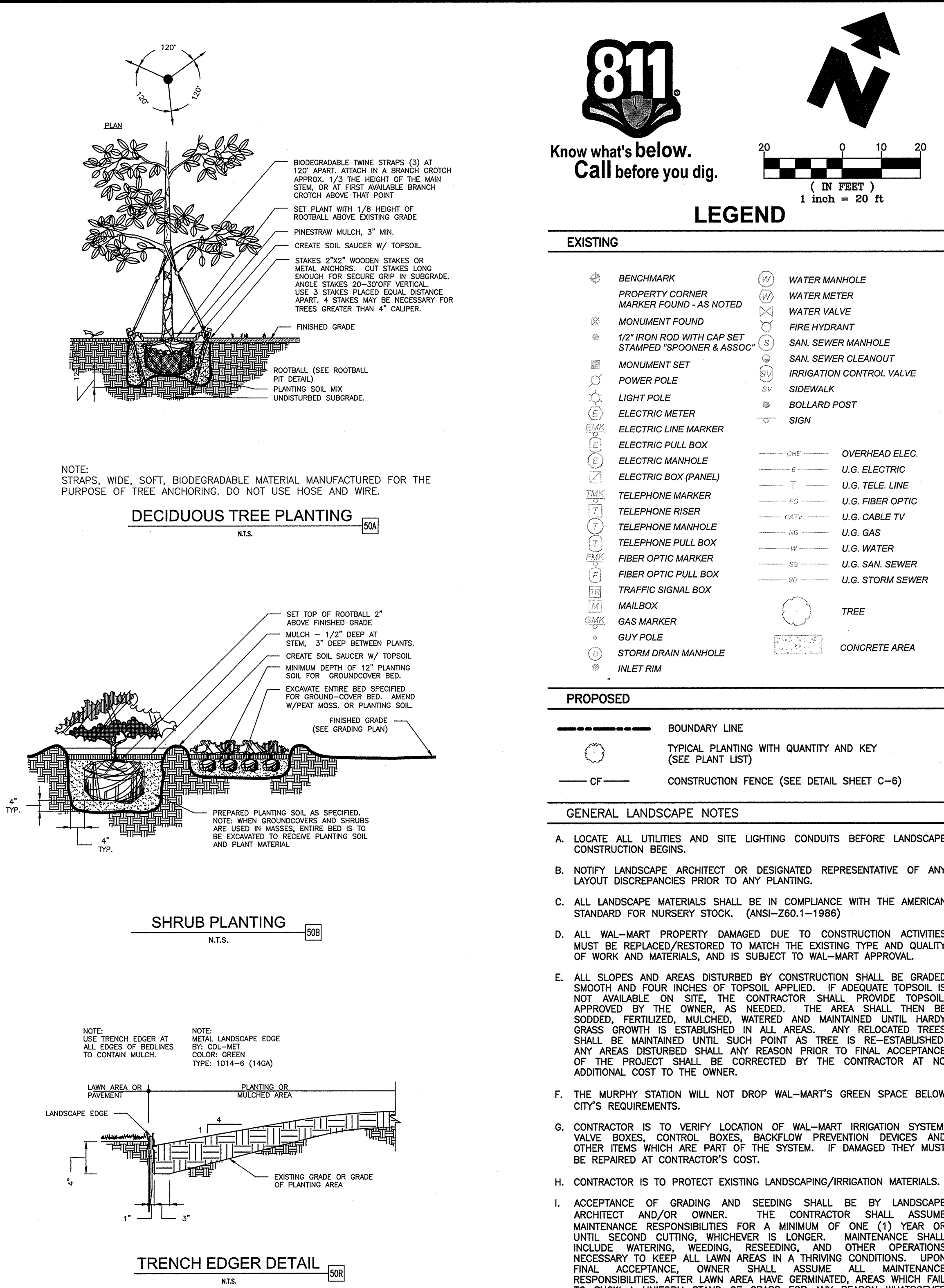
EL DORADO, AR 71730-7000

SITE PLAN
WALMART SUPERCENTER #259
776 E. I-30 FRONTAGE RD.
ROCKWALL, TEXAS



PLANT SCHEDULE

| TREES | QTY | BOTANICAL NAME / COMMON NAME | CONT | CAL | REMARKS |
|---------------|--------|---|-------|----------|--|
| | 3 | Acer rubrum 'October Glory' TM / October Glory Maple | B & B | 2.5"Cal | Straight Trunk, Full, well rooted soil |
| SHRUBS | QTY | BOTANICAL NAME / COMMON NAME | SIZE | HEIGHT | REMARKS |
| | 21 | Abelia x grandiflora / Glossy Abelia | 3 gal | | Full, Well Rooted In Pot |
| | 51 | Ilex cornuta 'Burfordii Nana' / Dwarf Burford Holly | 3 gal | | Full, Dense, Bushy |
| | 17 | Ilex x 'Nellie R Stevens' / Nellie Stevens Holly | B & B | 8' MIN. | Full to ground, Dense, Bushy |
| | 21 | Muhlenbergia capillaris 'Gulf Coast' / Gulf Coast Muhly | 3 gal | 24" MIN. | Full, Well Rooted In Pot |
| GROUND COVERS | QTY | BOTANICAL NAME / COMMON NAME | CONT | PTS. FA. | REMARKS |
| | 677 sf | Festuca arundinacea / Tall Fescue | sod | | Certified Pure, Weed Free |

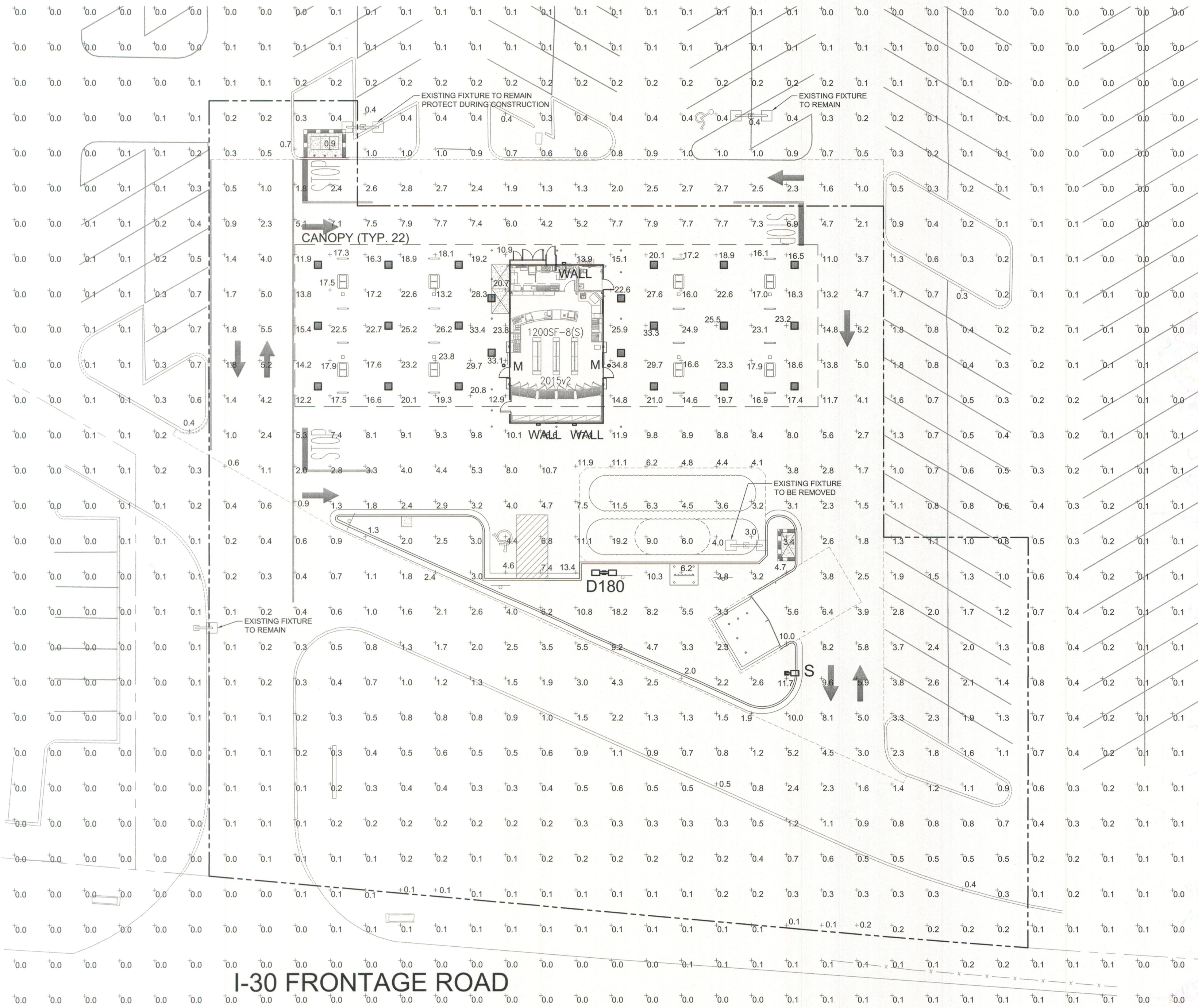


SHEET NO.
C-9

MURPHY OIL USA, INC.
200 PEACH STREET
P.O. BOX 7000
EL DORADO, AR 71730-7000

GreenbergFarrow
1430 W. PEACHTREE ST., NW SUITE 200
ATLANTA, GA 30340
PHONE: (404) 601 8000
FAX: (404) 601 9970
DWG NAME: ROCKWALL TEXAS
JOB NO.: 20150471
TEXAS REGISTRATION NO. F-4580

LANDSCAPE PLAN
WALMART SUPERCENTER #259
776 E. I-30 FRONTAGE RD.
ROCKWALL, TEXAS



NOTES:
PLAN WAS BASED ON THE INFORMATION PROVIDED, ALL DIMENSIONS, LUMINAIRE LOCATIONS SHOWN REPRESENT RECOMMENDED POSITIONS. THE ENGINEER AND/OR ARCHITECT MUST DETERMINE APPLICABILITY OF THE LAYOUT TO EXISTING OR FUTURE FIELD CONDITIONS.

THE CALCULATED PHOTOMETRIC LEVELS MAY OR MAY NOT MEET CERTAIN STANDARDS OR RECOMMENDED PRACTICES OF IESNA.

THE PHOTOMETRIC PLAN REPRESENTS ILLUMINATION LEVELS CALCULATED FROM LABORATORY DATA TAKEN UNDER CONTROLLED CONDITIONS UTILIZING CURRENT INDUSTRY STANDARD LAMP RATINGS IN ACCORDANCE WITH ILLUMINATING ENGINEERING SOCIETY (IES) APPROVED METHODS. LABORATORY TESTS ARE MADE UNDER OPTIMUM CONDITION, WITH LAMP OUTPUT AT RATED VALUE, AND IN ACCORDANCE WITH ILLUMINATING ENGINEERING SOCIETY APPROVED METHODS.

ACTUAL ILLUMINANCE LEVELS MAY DIFFER DUE TO VARIABLE FIELD CONDITIONS SUCH AS (BUT NOT LIMITED TO): VARIANCE IN LAMP LUMEN OUTPUT, LAMP TILT FACTOR, BALLAST WATTAGE OUTPUT, LINE VOLTAGE AT BALLAST, REFLECTOR SPECULARITY, LAMP LUMEN DEPRECIATION, AND LUMINAIRE DIRT DEPRECIATION.

THE 26'-0" MOUNTING HEIGHT IS THE ACTUAL ASSEMBLY (POLE, BASE, AND FIXTURE) AND MAY DIFFER FROM THE FROM THE LUMINAIRE'S LUMINOUS APERTURE.

THIS PLAN IS FOR RELATIVE LAYOUT AND SCOPE OF WORK PURPOSES ONLY. REFER TO SITE PLAN PREPARED BY LOCAL CONSULTANT FOR RELATIONSHIP OF THESE LUMINAIRE AND THEIR LOCATIONS TO EXISTING STRUCTURES AND REFERENCE.

CONTRACTOR TO ENSURE THE LIGHT POLE AND HANDICAP PARKING SIGN ARE AT LEAST 2' FROM THE BACK OF CURB TO PREVENT VEHICLES FROM STRIKING THE LIGHT POLE OR HANDICAP PARKING SIGN. PROPOSED LIGHT POLE BASES SHOWN AT A MINIMUM OF 2'-8" FROM BACK OF CURB TO CENTER OF POLE BASE. ENGINEER TO VERIFY PROPOSED LOCATIONS FOR ANY CONFLICTS OR MISPLACEMENTS. REPORT TO LIGHTING DESIGNER ANY DISCREPANCIES OR CONFLICTS

LED AREA LIGHTS - LSI SLICE MEDIUM (XLCM)

DOE LIGHTING FACTS
Department of Energy has verified representative product test data and results in accordance with its Lighting Facts Program. Visit www.lightingfacts.com for specific catalog strings.

| Type 3 | Type FT | Type 1 | Type 2 | Type 3E | Type 3F | Watts (Maximum) |
|--------|---------|--------|--------|---------|---------|-----------------|
| 10000 | 10000 | 22000 | 22000 | 15000 | 15000 | 180 |
| 22000 | 22000 | 31100 | 21000 | 21000 | 21000 | 278 |
| 31100 | 20000 | 20000 | 20000 | 15000 | 15000 | 180 |
| 20000 | 27800 | 28000 | 28000 | 20100 | 20000 | 278 |

LED Chips are frequently updated therefore values may increase.

DOE LIGHTING FACTS

Department of Energy has verified representative product test data and results in accordance with its Lighting Facts Program. Visit www.lightingfacts.com for specific catalog strings.

LIGHT OUTPUT - XLCM

| Type 3 | Type FT | Type 1 | Type 2 | Type 3E | Type 3F | Watts (Maximum) |
|--------|---------|--------|--------|---------|---------|-----------------|
| 10000 | 10000 | 22000 | 22000 | 15000 | 15000 | 180 |
| 22000 | 22000 | 31100 | 21000 | 21000 | 21000 | 278 |
| 31100 | 20000 | 20000 | 20000 | 15000 | 15000 | 180 |
| 20000 | 27800 | 28000 | 28000 | 20100 | 20000 | 278 |

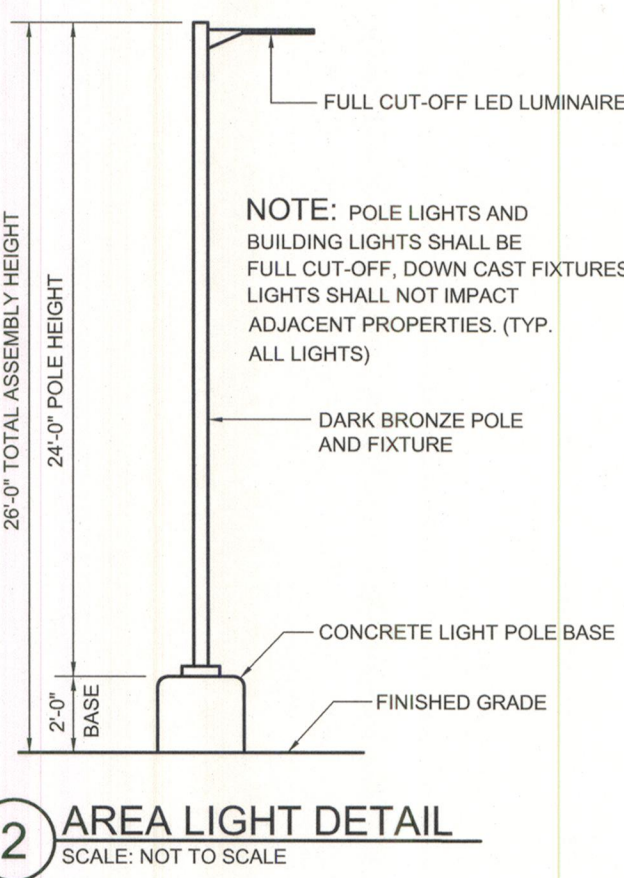
LED Chips are frequently updated therefore values may increase.

DOE LIGHTING FACTS
Department of Energy has verified representative product test data and results in accordance with its Lighting Facts Program. Visit www.lightingfacts.com for specific catalog strings.

CONTRACTOR TO ENSURE THE LIGHT POLE AND HANDICAP PARKING SIGN ARE AT LEAST 2' FROM THE BACK OF CURB TO PREVENT VEHICLES FROM STRIKING THE LIGHT POLE OR HANDICAP PARKING SIGN. PROPOSED LIGHT POLE BASES SHOWN AT A MINIMUM OF 2'-8" FROM BACK OF CURB TO CENTER OF POLE BASE. ENGINEER TO VERIFY PROPOSED LOCATIONS FOR ANY CONFLICTS OR MISPLACEMENTS. REPORT TO LIGHTING DESIGNER ANY DISCREPANCIES OR CONFLICTS

DOE LIGHTING FACTS
Department of Energy has verified representative product test data and results in accordance with its Lighting Facts Program. Visit www.lightingfacts.com for specific catalog strings.

CONTRACTOR TO ENSURE THE LIGHT POLE AND HANDICAP PARKING SIGN ARE AT LEAST 2' FROM THE BACK OF CURB TO PREVENT VEHICLES FROM STRIKING THE LIGHT POLE OR HANDICAP PARKING SIGN. PROPOSED LIGHT POLE BASES SHOWN AT A MINIMUM OF 2'-8" FROM BACK OF CURB TO CENTER OF POLE BASE. ENGINEER TO VERIFY PROPOSED LOCATIONS FOR ANY CONFLICTS OR MISPLACEMENTS. REPORT TO LIGHTING DESIGNER ANY DISCREPANCIES OR CONFLICTS



MANUFACTURER SPECIFICATION SHEET FOR SITE FIXTURES

LED CANOPY LIGHT - LEGACY™ (CRUS)

DOE LIGHTING FACTS
Department of Energy has verified representative product test data and results in accordance with its Lighting Facts Program. Visit www.lightingfacts.com for specific catalog strings.

CRUS - Standard Symmetric
AC - Asymmetric

AC distribution utilizes a reflector which alters the look from a standard S distribution

DOE LIGHTING FACTS

Department of Energy has verified representative product test data and results in accordance with its Lighting Facts Program. Visit www.lightingfacts.com for specific catalog strings.

CRUS - Standard Symmetric
AC - Asymmetric

AC distribution utilizes a reflector which alters the look from a standard S distribution






DOE LIGHTING FACTS
Department of Energy has verified representative product test data and results in accordance with its Lighting Facts Program. Visit www.lightingfacts.com for specific catalog strings.

CRUS - Standard Symmetric
AC - Asymmetric



AC distribution utilizes a reflector which alters the look from a standard S distribution

| CALCULATION SUMMARY | | | | | |
|-----------------------|-------|-------|------|---------|------|
| LABEL | UNITS | AVG | MAX | ALLOWED | MIN |
| UNDER CANOPY LIGHTING | FC | 20.36 | 34.8 | 35.0 | 10.9 |
| ILLUMINATED AREAS | FC | 4.28 | 19.2 | 20.0 | 0.2 |

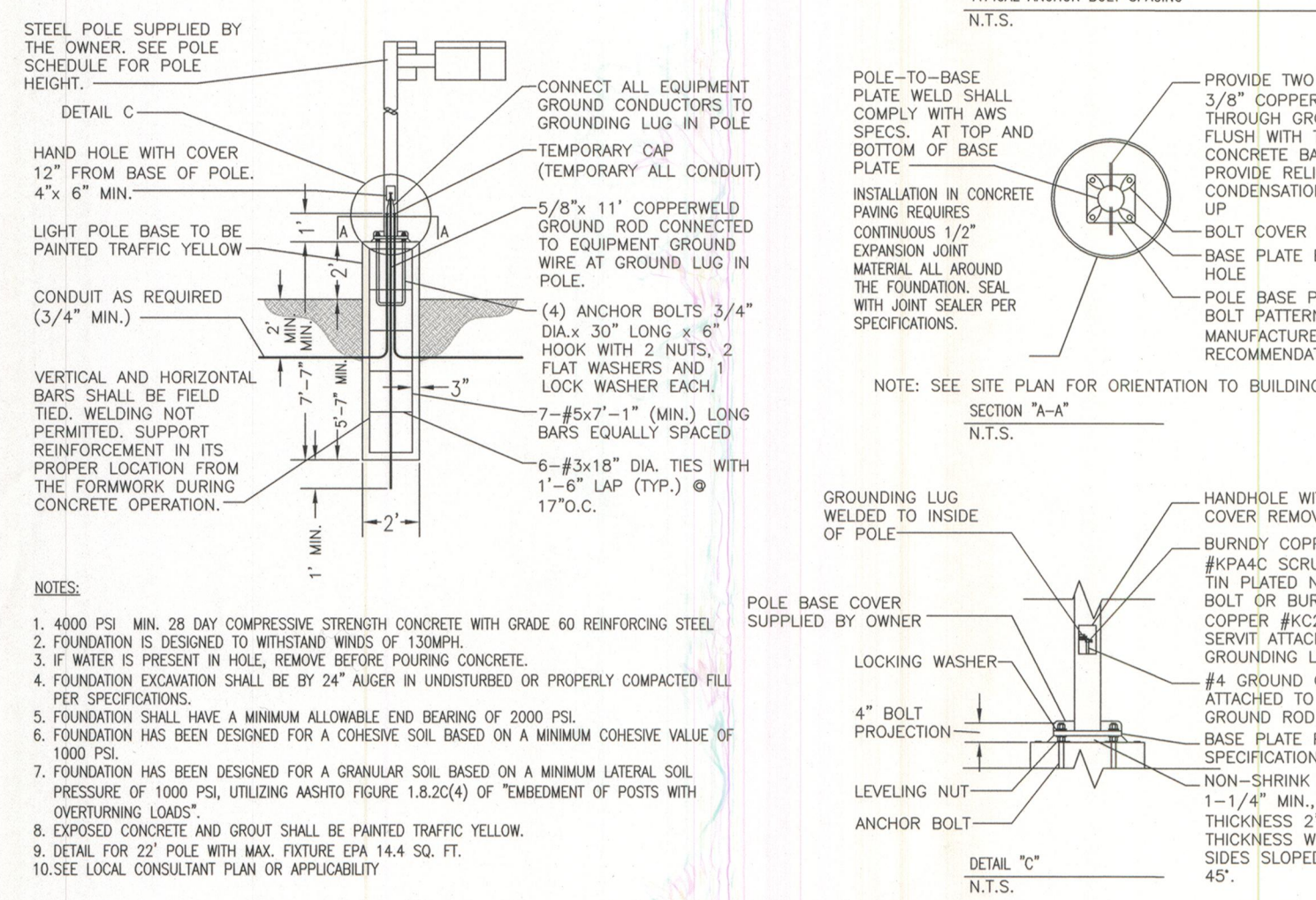
PER SEC. 3.3, C., LIGHT AT NONRESIDENTIAL PROPERTY LINE, SINCE PROPOSED SITE IS TO REPLACE AN EXISTING MURPHY USA AND SITE IS COMPLETELY CONTAINED WITHIN AN EXISTING COMMERCIAL DEVELOPMENT THE INTENT OF THIS LIGHTING PLAN IS TO REPLACE THE FIXTURE TO BE REMOVED DURING CONSTRUCTION WITH HIGHER EFFICIENCY LED FIXTURES. THE LIGHT SPillover ACROSS COMMON LOT LINES WITHIN THE SAME DEVELOPMENT SHOULD BE CONSIDERED BENEFICIAL TO BOTH LOTS. NOTE THAT THE 0.2 FOOT-CANDLE LIMIT IS MAINTAINED ON THE PROPERTY LINE ALONG I-30 FRONTAGE ROAD PER CODE.

| LUMINAIRE SCHEDULE | | | | | | | | | |
|--------------------|---|-----|-----------------|-------------|--------|-------------|------------------------------|---|--------------|
| MOUNTING CONFIG | SYMBOL | QTY | ASSEMBLY HEIGHT | POLE HEIGHT | LUMENS | TOTAL WATTS | MODEL NUMBER | DESCRIPTION | B-U-G RATING |
| S |  | 1 | 26'-0" | 24'-0" | 22800 | 193 | XLCM-FT-LED-SS-CW-BRZ | LSI LIGHTING, SLICE MEDIUM LED SERIES AREA LIGHT, SUPER SAVER, COOL WHITE, SINGLE HEAD FLAT LENS FIXTURE, FORWARD THROW | B3-U0-G3 |
| D180 |  | 1 | 26'-0" | 24'-0" | 22800 | 193 | XLCM-FT-LED-SS-CW-BRZ | LSI LIGHTING, SLICE MEDIUM LED SERIES AREA LIGHT, SUPER SAVER, COOL WHITE, SINGLE HEAD FLAT LENS FIXTURE, FORWARD THROW | B3-U0-G3 |
| CANOPY |  | 22 | 15'-0" | N/A | 8842 | 79 | CRUS-SC-LED-VLW-50-UE-WHT | LSI LIGHTING, LEGACY SERIES, VERY LOW WATT DRIVE, FLAT LENS CANOPY FIXTURE | B3-U0-G1 |
| WALL |  | 3 | 8'-3" | N/A | 4109 | 42 | XSPWA03MC-UZP | CREE LIGHTING, XSP WALL MOUNT LUMINAIRE, 5700k CCT, WITH PHOTOCELL SENSOR | B1-U0-G1 |
| M |  | 2 | 8'-3" | N/A | 1800 | 20 | LR6-18L-35K-120V-A-DR W/LT6A | CREE LIGHTING, LR-6 DOWN LIGHT LUMINAIRE, 3500k CCT, 1800 LUMENS FULLY RECESSED ENTRY LIGHTS WITH HOUSING RC6-12W-GU24 | B1-U0-G0 |

NOTES: ALL AREA SITE LIGHT FIXTURES AND POLES TO BE MOUNTED ON CONCRETE BASE PER DETAIL. THIS SHEET
ALL ANCHOR BOLTS TO BE ORIENTED IN THE SAME DIRECTION (SQUARE) AT INSTALLATION PER MANUFACTURER'S SPECIFICATIONS.
ALL FIXTURES ARE FULL CUT-OFF FIXTURES, IN THE B-U-G RATING SYSTEM THE U (UPLIGHT) RATING IS 0 FOR EACH WHICH INDICATES A FULL CUT-OFF FIXTURE

| POLE SCHEDULE | | | | | |
|-----------------|---|-----|-------------|-------------------------|--|
| MOUNTING CONFIG | SYMBOL | QTY | POLE HEIGHT | MODEL NUMBER | DESCRIPTION |
| S |  | 1 | 24'-0" | 5SQB3-S11G-24-S-BRZ-5BC | LSI LIGHTING, STEEL SQUARE POLE, BOLT-ON ARM MOUNT, BRONZE |
| D180 |  | 1 | 24'-0" | 5SQB3-S11G-24-S-BRZ-5BC | LSI LIGHTING, STEEL SQUARE POLE, BOLT-ON ARM MOUNT, BRONZE |

NOTES: ALL AREA SITE LIGHT FIXTURES AND POLES TO BE MOUNTED ON CONCRETE BASE PER DETAIL, THIS SHEET



MANUFACTURER SPECIFICATION SHEET FOR CANOPY FIXTURE

DATE: _____
DRAWN BY: _____
DESIGNED BY: _____
REVISION: _____
No. _____

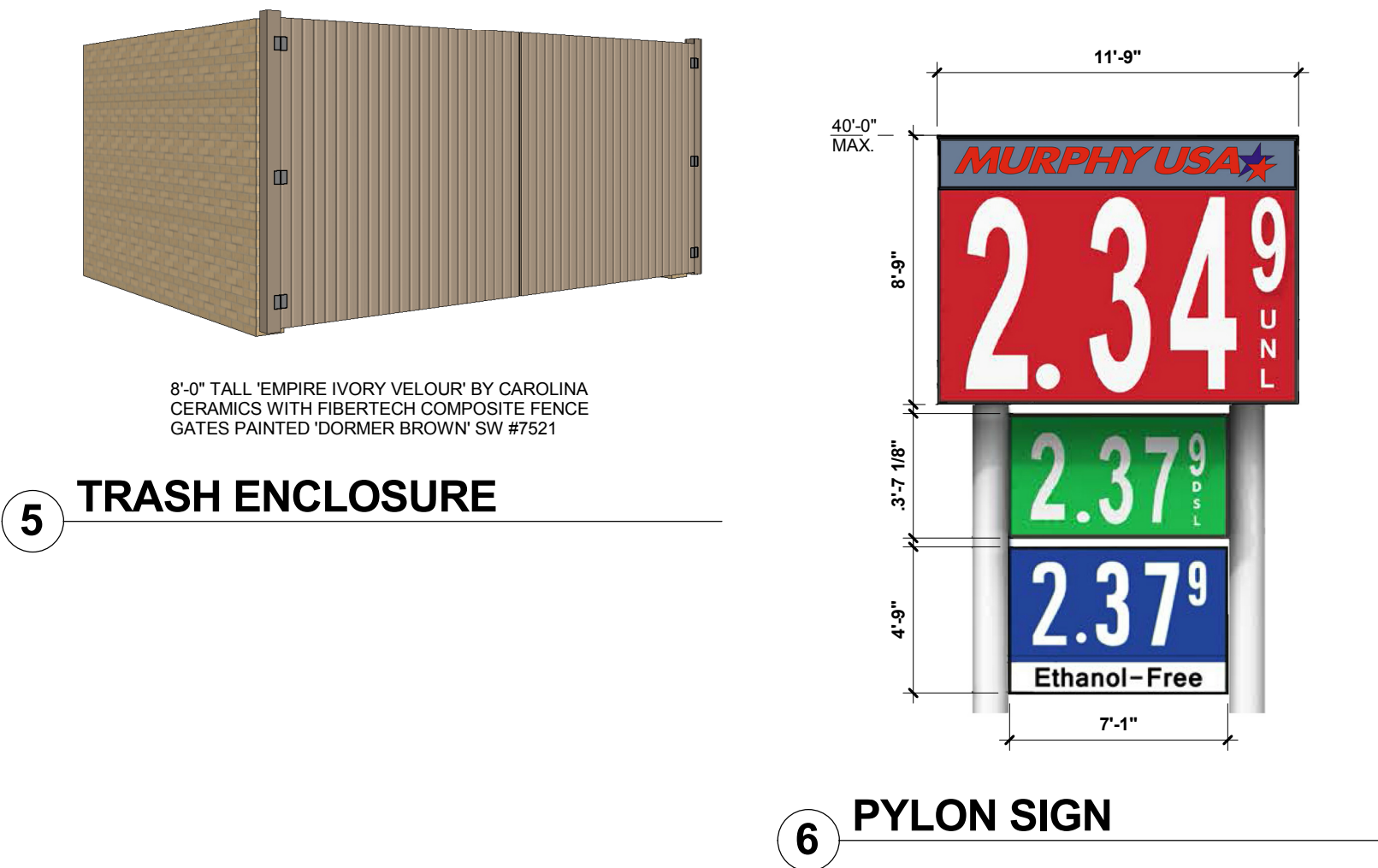
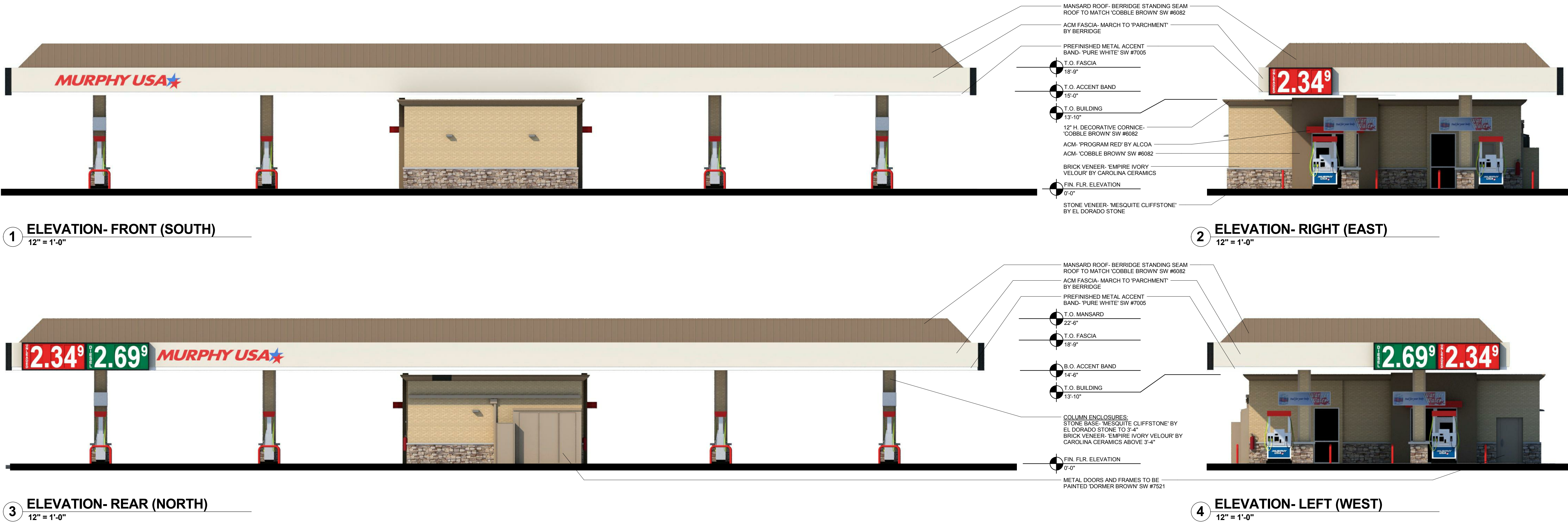
Galloway
Planning, Architecture, Engineering,
6162 S. Willow Drive, Suite 320
Rockwall, Texas 75087
303.770.8884
303.770.3636 F
www.gallowayus.com
©2011 Galloway & Company, Inc. All Rights Reserved
TEXAS REGISTERED ENGINEERING
FROM F-10360

MURPHY USA
ROCKWALL, TEXAS

PHOTOMETRIC SITE PLAN

Project No: MOC9584
Sheet Scale: 1"=20'-0"
Date: May, 2017
Disk File: LI Photometric-Rockwall, Tx

L-1.0



| SIGN | QTY. | HEIGHT | WIDTH | AREA (S.F.) | TOTAL S.F. |
|-----------------------------|------|---------|--------------|-------------------------------|------------|
| MURPHY USA CANOPY LOGO SIGN | 2 | | GRAPHIC AREA | 47.96 | 95.92 |
| LARGE CANOPY PRICE SIGN | 5 | 51.25" | 118.00" | 42.00 | 210.00 |
| ISLAND SPANNER | 4 | 25.19" | 97.19" | 17.00 | 68.00 |
| PYLON SIGN: | | | | TOTAL PYLON SIGN AREA: 161.92 | |
| UNLEADED | 1 | 105.00" | 141.00" | 102.81 | 102.81 |
| DIESEL | 1 | 43.125" | 85.00" | 25.46 | 25.46 |
| EO | 1 | 57.00" | 85.00" | 33.65 | 33.65 |
| | | | | TOTAL SIGNAGE: | 535.84 |