

② WEST ELEVATION

SCALE: 3/32" = 1'-0"
100% MASONRY
22% STONE
21% STUCCO
57% CMU BLOCK



① SOUTH (FRONT) ELEVATION

SCALE: 3/32" = 1'-0"
100% MASONRY
30% STONE
37% STUCCO
33% CMU BLOCK

EXTERIOR ELEVATION KEYNOTES	
①	OLD CASTLE CMU, 8x8x16
②	LIMESTONE COLOR
③	OLD CASTLE CMU, 8x8x16 BURNISHED TAYLOR
④	STONE, LIMESTONE 8"x8"x12" CHOPPED ASHLAR PATTERN
⑤	7/8" 3 PART STUCCO W/ GLASTOMERIC FINISH MEDIUM TEXTURE, SWIRLED, DRYING WHITE COLOR
⑥	RTU BEYOND
⑦	OLD CASTLE CMU, 8x8x16 SMOOTH FACE W/ GLASTOMERIC YELLOW PAINT FINISH
⑧	OLD CASTLE CMU, 8x8x16 SMOOTH FACE W/ GLASTOMERIC RED PAINT FINISH
⑨	PLASTER CONTROL/EXPANSION JOINT
⑩	EXPANSION JOINT BETWEEN STONE AND PLASTER WALL FINISH
⑪	MELRODY METAL ROOF, BRITE RED COLOR
⑫	MELRODY METAL ROOF, BRITE RED COLOR
⑬	ROOF ACCESS LADDER, PAINTED
⑭	MELRODY METAL CORNING, BRITE RED COLOR
⑮	ROOF SCUPPER & DOWNSPOUT - PAINTED SWIRLED DRYING WHITE
⑯	PANT BOOTH VENT STACK
⑰	INSULATED GIL DOOR & VISION PANELS
⑱	INSULATED GIL SECTIONAL METAL DOOR
⑲	7/8" 3 PART STUCCO WALL FINISH PAINTED #2 YELLOW COLOR
⑳	STONEFRONT WINDOW & DOOR COLOR MEDIUM BRICKLE
㉑	EXTERIOR HOLLOW METAL DOOR & FRAME, REF. STL. 7-8/16/12, SW 8100 DRYING WHITE
㉒	ROOF LINE BEYOND
㉓	FIRE RISER W/ FIRE DEPARTMENT CONNECTION
㉔	ELECTRICAL RISER, NO. CLEC DRAWINGS
㉕	PAINT SW 8100 DRYING WHITE
㉖	5'-8" HIGH 4" DIA. FIRE BOLLARD PAINT TRAFFIC YELLOW

DATE	MAY 13, 2016
BY	007, 26, 2016
PROJECT	
DESCRIPTION	
REVISIONS	
NO.	
DATE	
BY	
DESCRIPTION	
REVISIONS	
NO.	
DATE	
BY	
DESCRIPTION	



STATE OF TEXAS
REGISTERED ARCHITECT
CARROLL ARCHITECTS
2600 N. CENTRAL EXPWY.
SUITE 400
RICHARDSON, TEXAS
75080
P. 972.212.8018
F. 972.212.8018

**SERVICE KING
COLLISION REPAIR CENTER**
1780 East Interstate 30
Rockwall, Texas

**SERVICE KING
COLLISION REPAIR CENTER**
2600 N. CENTRAL EXPWY.
SUITE 400
RICHARDSON, TEXAS
75080

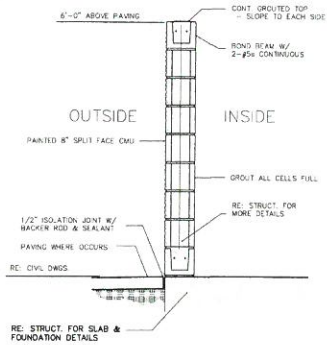
**CARROLL
architects**
7501 E. INTERSTATE 30
ROCKWALL, TX 75087
P. 972.212.8018
F. 972.212.8018

**EXTERIOR
ELEVATIONS
& DETAILS**

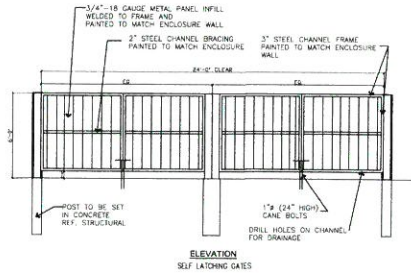
05.01.2016 SHEET NO:
A501

OR

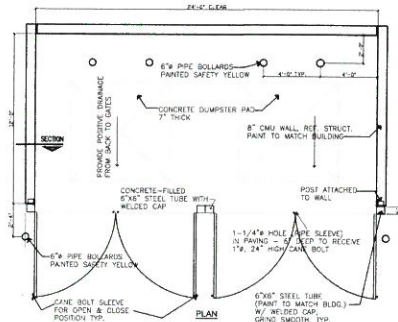
JC



3 DUMPSTER WALL SECTION
SCALE: 3/4"=1'-0"



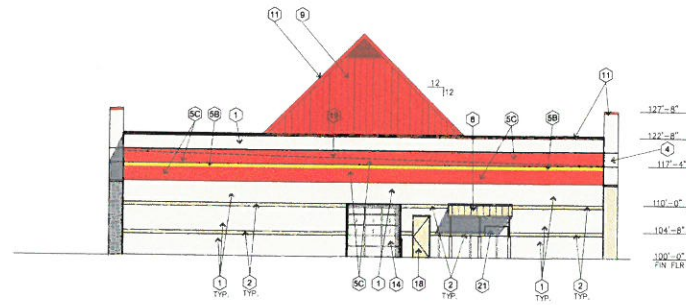
ELEVATION
SELF LATCHING GATES



4 DUMPSTER ENCLOSURE DETAIL
SCALE: 1/4"=1'-0"



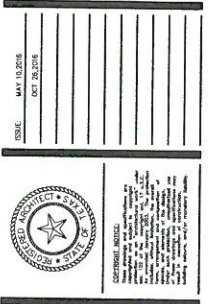
2 EAST ELEVATION
SCALE: 3/32"=1'-0"
100% CMU BLOCK MASONRY
20% STUCCO
17% STUCCO
63% CMU BLOCK



1 NORTH ELEVATION
SCALE: 3/32"=1'-0"
100% CMU BLOCK MASONRY

NOTE:
MORTAR: MORTAR - (800) 313.0755
CMU MORTAR COLOR TO MATCH SPLIT FACE
CMU COLOR #1
STONE MORTAR COLOR TO BE SELECTED BY
ARCHITECT (LIGHT BUILT)

- EXTERIOR ELEVATION KEYNOTES**
- 1 OLD CASTLE CMU, 8x16, LIMESTONE COLOR
 - 2 OLD CASTLE CMU, 8x16, BURNISHED TAN COLOR
 - 3 STONE, LIMESTONE 8"x8"x12" CHOPPED ASPHALT PATTERN
 - 4 7/8" 3 PART STUCCO W/ ELASTOMERIC FINISH, MEDIUM TEXTURE, BURGUNDY WHITE COLOR
 - 5 NOT USED
 - 6 OLD CASTLE CMU, 8x16, SMOOTH FACE W/ ELASTOMERIC YELLOW PAINT FINISH
 - 7 PLASTER CONTROL/JUNCTION JOINT AND PLASTER WALL FINISH
 - 8 EXPANSION JOINT BETWEEN STONE AND PLASTER WALL FINISH
 - 9 WEATHER METAL ROOF, BRITE RED COLOR
 - 10 ROOF ACCESS LADDER, PAINTED
 - 11 WEATHER METAL ROOF, BRITE RED COLOR
 - 12 ROOF SCUPPER & DOWNSPOUT - PAINTED BRITE RED COLOR
 - 13 PAINT BOOTH VENT STACK
 - 14 INSULATED GIN DOOR & VISION PANELS
 - 15 INSULATED GIN SECTIONAL METAL DOOR
 - 16 7/8" 3 PART STUCCO WALL FINISH, PAINTED #2 YELLOW COLOR
 - 17 STONEPOINT WINDOW & DOOR COLOR - MEDIUM BRNCE
 - 18 EXTERIOR HOLLOW METAL DOOR & FRAME, REF. STD. 7-8/4X12, SW 8105 DIVINE WHITE
 - 19 ROOF LINE BEYOND
 - 20 FIRE RISER W/ FIRE DEPARTMENT CONNECTION
 - 21 ELECTRICAL RISER, REF. ELEC. DRAWINGS, PAINT SW 8105 DIVINE WHITE
 - 22 2" x 4" HIGH x 4" DIA. PIPE BOLLARD, PAINT TRAFFIC YELLOW



**SERVICE KING
COLLISION REPAIR CENTER**
1780 East Interstate 30
Rockwall, Texas

**SERVICE KING
COLLISION REPAIR CENTER**
2600 N. CENTRAL EXPY.
SUITE 400
RICHARDSON, TEXAS
75080



**EXTERIOR
ELEVATIONS
& DETAILS**

DATE: 05.01.2018 SHEET NO:
PROJECT NO: 201600
DRAWN BY: CW
CHECKED BY: JC

A502